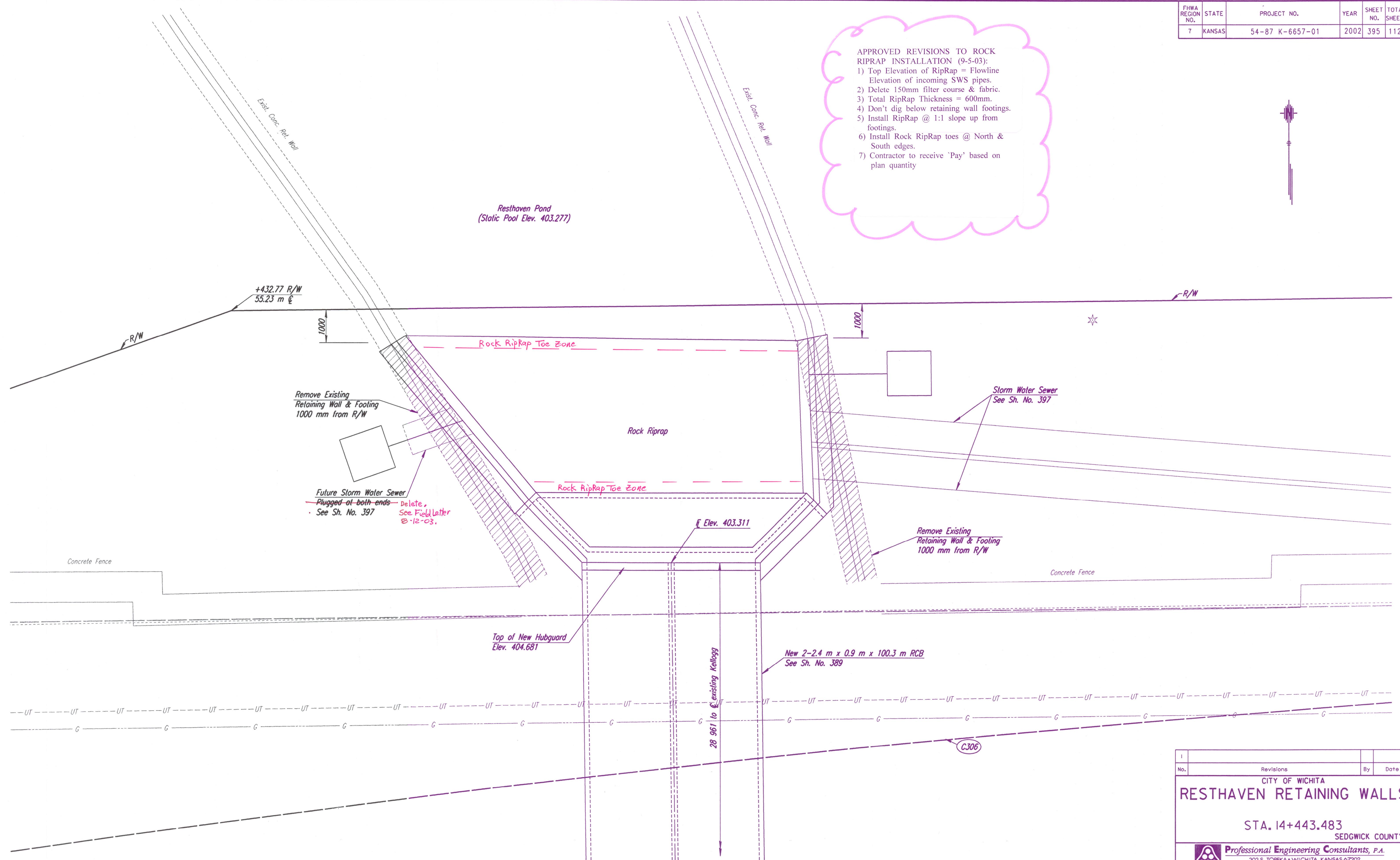


FHWA REGION NO.	STATE	PROJECT NO.	YEAR	SHEET NO.	TOTAL SHEETS
7	KANSAS	54-87 K-6657-01	2002	395	1122

- APPROVED REVISIONS TO ROCK RIPRAP INSTALLATION (9-5-03):
- 1) Top Elevation of RipRap = Flowline Elevation of incoming SWS pipes.
  - 2) Delete 150mm filter course & fabric.
  - 3) Total RipRap Thickness = 600mm.
  - 4) Don't dig below retaining wall footings.
  - 5) Install RipRap @ 1:1 slope up from footings.
  - 6) Install Rock RipRap toes @ North & South edges.
  - 7) Contractor to receive 'Pay' based on plan quantity

DATE	
BY	
REFERENCES NOTED	
REFERENCES CHECKED	

DSNR: RWA OPER: DRP SCALE: 1:50  
 I:/1997/97362/001/RCB/RESTHPLAN.DGN 8-09-2001 11:32:55 LAST REV: 3-27-2002 BY: mdg



No.	Revisions	By	Date
CITY OF WICHITA			
<b>RESTHAVEN RETAINING WALLS</b>			
STA. 14+443.483			
SEDGWICK COUNTY			
<b>Professional Engineering Consultants, P.A.</b> <small>303 S. TOPEKA • WICHITA, KANSAS 67202          316-262-2691 • FAX 316-262-3003</small>			
Designed by	RWA	Checked by	RAS
Drawn by	DRP	Date	April, 2002
		Job No.	97362