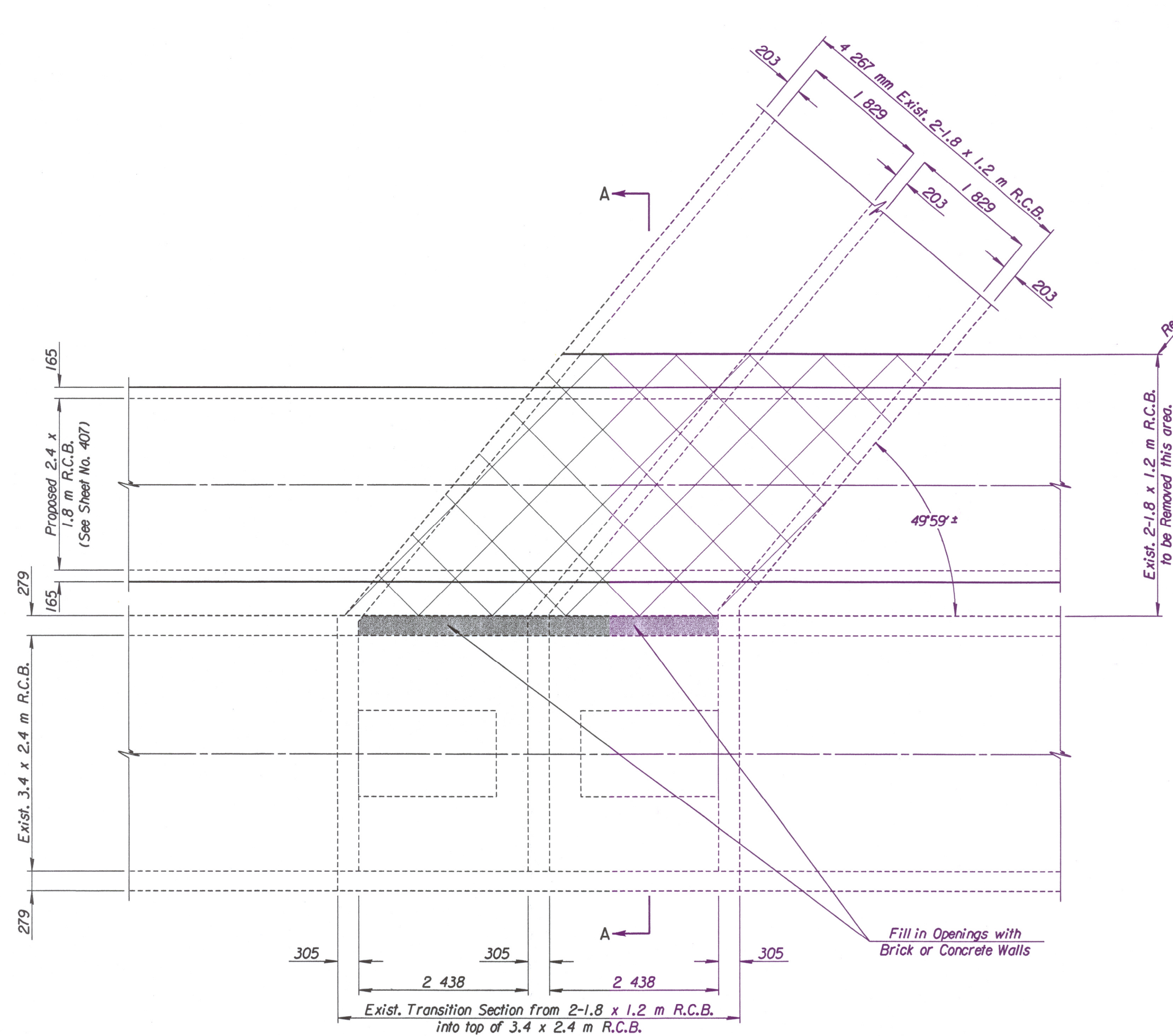
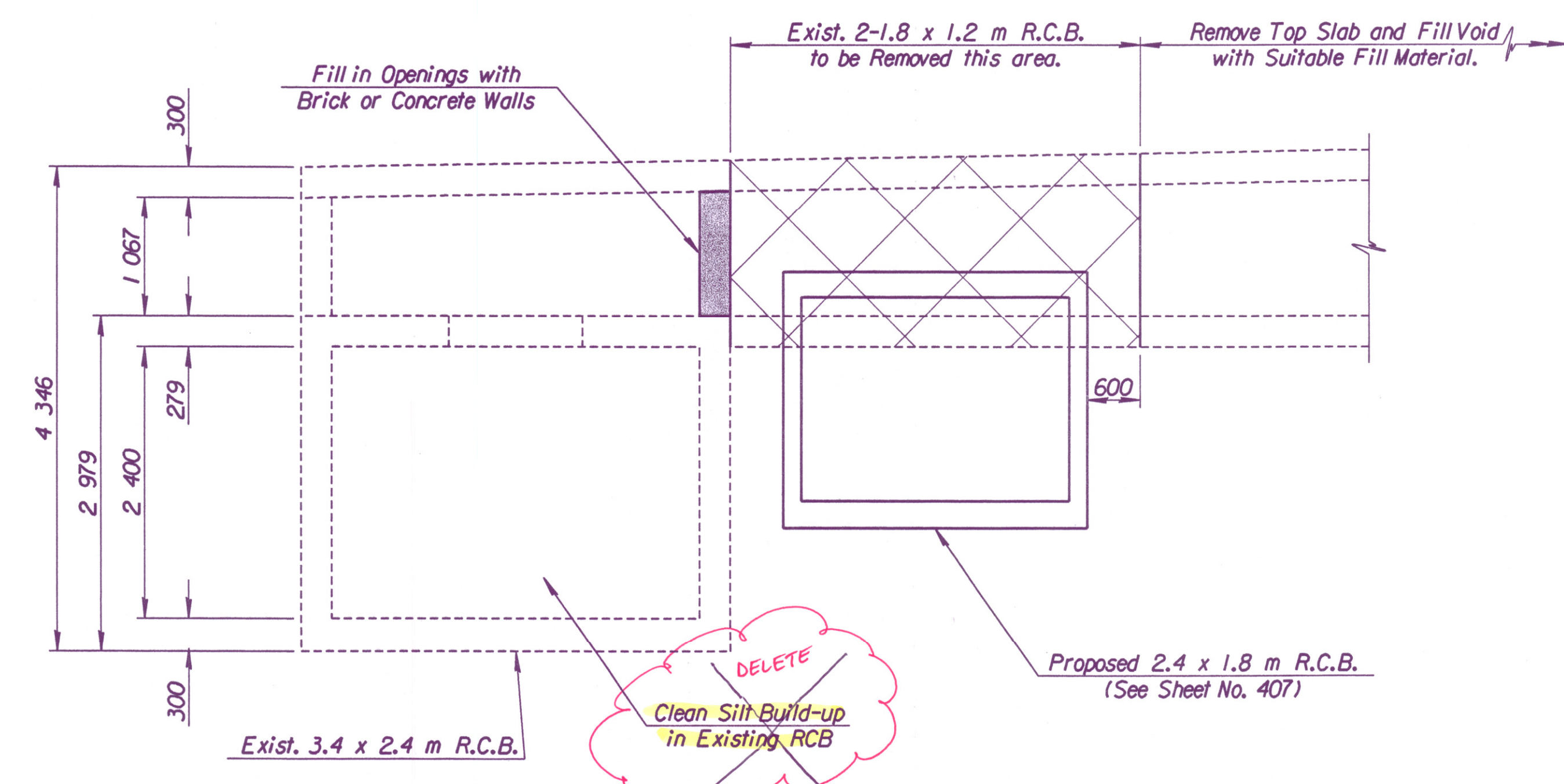


STATE	PROJECT NO.	YEAR	SHEET NO.	TOTAL SHEETS
KANSAS	54-87 K-6657-01	2002	406	1122



PLAN



SECTION A-A

ADDENDUM #1:

Sheet 406 - Delete note to clean silt from the existing 3.4 x 2.4 m RCB. The Contractor will not be required to clean debris out of the existing 3.4 x 2.4 m RCB.

Plotted by: ras 2-11-2002
i:\1997\97362\001\rcb\24xingE.x.dgn

No.	Revisions	By	Date
CITY OF WICHITA S+0.17+090.000			
REMOVAL OF 2-1.8 x 1.2 m R.C.B. SECTION			
KELLOGG (US-54)			
SEDGWICK COUNTY			
Professional Engineering Consultants, P.A. 303 S. TOPEKA • WICHITA, KANSAS 67202 316-262-2691 • FAX 316-262-3003			
Designed by	RWA	Checked by	RAS
Drawn by	GDR	Date	April, 2002 Job No. 97362