

FHWA REGION NO.	STATE	PROJECT NO.	YEAR	SHEET NO.	TOTAL SHEETS
7	KANSAS	54-87 K-6657-01	2002	434	1122

Record Drawings III

VOLUME I

- 1 Title Sheet
- 2 Index of Sheets
- 3-6 Typical Section - Mainline
- 7-11 Typical Section - Sideroads
- 12 Foundation Treatment and Compaction of Earthwork
- 13-14 Superlevation and Cross-slope Transition Diagrams
- 15 General Notes
- 16-63 Plan, Geometric Coordinate, and Profile Sheets (US-54)
- 64-69 Plan and Profile Sheets (Maize Road)
- 70-75 Plan and Profile Sheets (Tyler Road)
- 76-81 Ramp Profiles
- 82-92 Intersection Details
- 93-116 Paving Plans
- 117-126 Concrete Bridge Approach Pavement Details
- 127-134 Pavement Details
- 135-146 Inlet and Manhole Details
- 147 Edge Drain Details (Deleted)
- 148-150 Headwall Details
- 151-162 Storm Sewer Plans
- 163-180 Storm Sewer Profiles
- 181-195 Storm Sewer Schedules
- 196-227 Waterline Plans, Profiles, and Details
- 228-233 Concrete Safety Barrier Details
- 234-236 QuadGuard Details

VOLUME II

- 237 Index of Sheets
- 238 Cast in Place Retaining Walls General Notes
- 238A Planter Wall Details
- 239 Cast-in-place Retaining Walls Architectural Details
- 240-250 Retaining Wall and Planter Plans (Cast-in-Place)
- 251 Planter Wall Handrail Details
- 252-270 Retaining Wall and Planter Elevations (Cast-in-Place)
- 271-364 Retaining Wall and Planter Details (Cast-in-Place)
- 365-368 Retaining Wall #9 Details
- 369-374 Retaining Wall #10 Details
- 375-376 MSE Retaining Wall General Notes
- 377-386 MSE Retaining Wall Plans and Profiles
- 387 Metal End Section
- 388 Concrete End Sections
- 389-397 2-2.4x0.9 RCB Details (Sta 14+443.483)
- 398-399 1.8x0.9 RFB Details (Sta 15+407.000)
- 400-410 2.4x1.8 RFB Details (Sta 17+090.000)
- 411-417 3.4x2.4 RFB Details (Sta .17+121.754 to 17+420)
- 418 RCB Transition Details (3.4X2.4 to 3.0x2.1)
- 419-425 3.0x2.1RCB Details (Sta 17+423 to 17+776)
- 426-427 2.1x1.2 RCB Details (Maize Sta. 4+146)
- 428-429 2.1x1.2 RCB Details (Tyler Sta. 5+311)
- 430-433 RCB Standard Details

VOLUME III

- 434 Index of Sheets
- 435-476 Bridge No. 54-87-19.05 (489) W.B. & Bridge No. 54-87-19.06(491) E.B.
- 477-498 Bridge No. 54-87-19.32(495) F.W.B.
- 499-531 Bridge No. 54-87-19.30(493) E.B. & Bridge No. 54-87-19.31(494) W.B.
- 532-564 Bridge No. 54-87-19.29(492) F.E.B.
- 565-606 Bridge No. 54-87-20.13(496) W.B. & Bridge No. 54-87-20.12(497) E.B.
- 607-611 Bridge Standards
- 612-623 Summary of Quantities
- 624 Earthwork Balances
- 625 Recapitulation of Quantities
- 626-631 Temporary Project Water Pollution Control (Soil Erosion)
- 632-654 Lighting Plans and Details
- 655-668 Traffic Signals

VOLUME IV

- 669 Index of Sheets
- 670-792 Signing and Pavement Marking
- 793-794 Construction Sequence
- 795-823 Traffic Control
- 823A Traffic Control
- 824-846 Traffic Control
- 847-894 Landscaping and Irrigation Plans and Details
- 894A Wetland Mitigation Plan
- 895-896 Drainage Maps

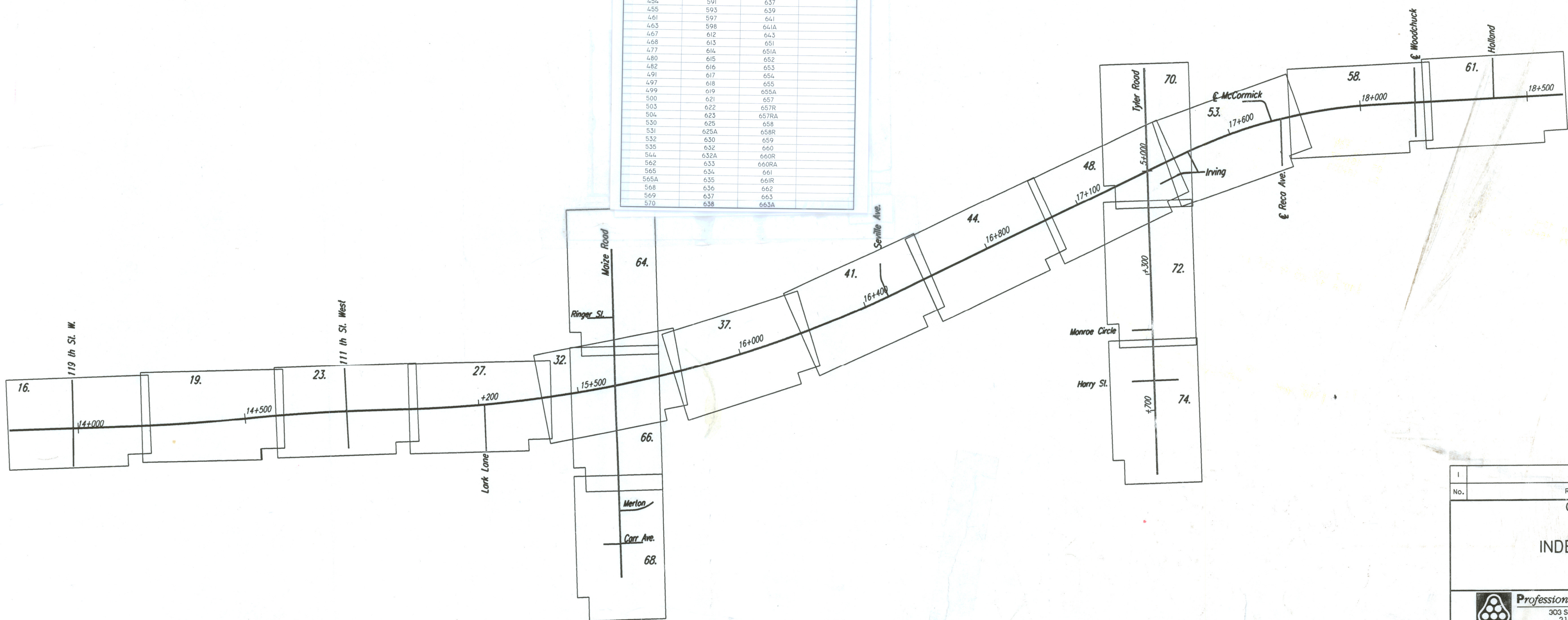
VOLUME V

- 897 Index of Sheets
- 898-1048 Cross Sections - Mainline and Frontage Roads
- 1049-1060 Cross Sections - Cowskin
- 1061-1081 Cross Sections - Maize Road
- 1082-1106 Cross Sections - Tyler Road
- 1107-1110 Cross Sections - Woodchuck
- 1111-1114 Cross Sections - Seville
- 1115 Cross Sections - Lark
- 1116 Cross Sections - Irving
- 1117-1118 Cross Sections - Holland
- 1119-1120 Cross Sections - Channel Change at Sta. 14+425
- 1121-1122 Cross Sections - Channel Change at Sta. 17+090

SHEET INDEX FOR RECORD DRAWING EDITS

WEST KELLOGG FREEWAY
MAIZE & TYLER ROAD INTERCHANGES PROJECT
CITY OF WICHITA PROJECT NUMBER: 472-83533

VOLUME 3		
SHEET #		
434A	571	639
435	572	640
435A	573	641
438	575	642
439	576	643
440	578	644
441	579	645A
442	581	645B
443	582	645C
445	584	646A
446	585	646B
448	588	646C
449	589	645
451	590	636
454	591	637
455	593	639
461	597	641
463	598	641A
467	612	643
468	613	651
477	614	651A
480	615	652
482	616	653
491	617	654
497	618	655
499	619	655A
500	621	657
503	622	657R
504	623	657RA
530	625	658
531	625A	658R
532	630	659
535	632	660
544	632A	660R
562	633	660RA
565	634	661
565A	635	661R
568	636	662
569	637	663
570	638	663A



Revisions		By	Date
No.			
CITY OF WICHITA			
INDEX OF SHEETS			
SEDGWICK COUNTY			
 Professional Engineering Consultants, P.A. 303 S. TOPKA • WICHITA, KANSAS 67202 316-262-2691 • FAX 316-262-3003			
Designed by	WDH	Checked by	
Drawn by	JGP	Date	April, 2002
		Job No.	97362

RECORD DRAWING SET

BY: 1:1997/97362/INDEX.DGN 11-23-1999 7:46:50 LAST REV: