

STATE	PROJECT NO.	YEAR	SHEET NO.	TOTAL SHEETS
KANSAS	54-87-K-6657-01	2002	436	1122

ADDENDUM #3:

The following changes and additions shall be made to the plans and proposal. When this addendum conflicts with the specifications, plans, or special provisions, Addendum #1, or Addendum #2, **THIS ADDENDUM SHALL GOVERN.**

The following paragraphs are added to clarify the notes included in the plans regarding painting of the structural steel girders. The referenced plan sheet notes are found under the heading "PAINTING" on Sheet Nos. 435 and 565:

1. Painting of the girders shall generally be in compliance with the KDOT Specifications.
2. The interior portions of the box girders shall receive either two coats in the shop, which consist of an inorganic zinc prime coat (3 mil minimum DFT), OR, an inorganic zinc prime coat (3 mil minimum DFT) applied in the shop and a waterborne acrylic final coat (3 mil minimum DFT) applied in the field.
3. For either case, the final coat applied to the interior portions of the box girders shall be white.
4. The exterior portions of the box girders shall receive an inorganic zinc prime coat applied in the shop. The exposed exterior portions of the girders shall receive a waterborne acrylic final coat applied in the field after erection. The final coat shall be an approved waterborne acrylic paint in color #20372 (Buckskin) of Federal Standard 595B.

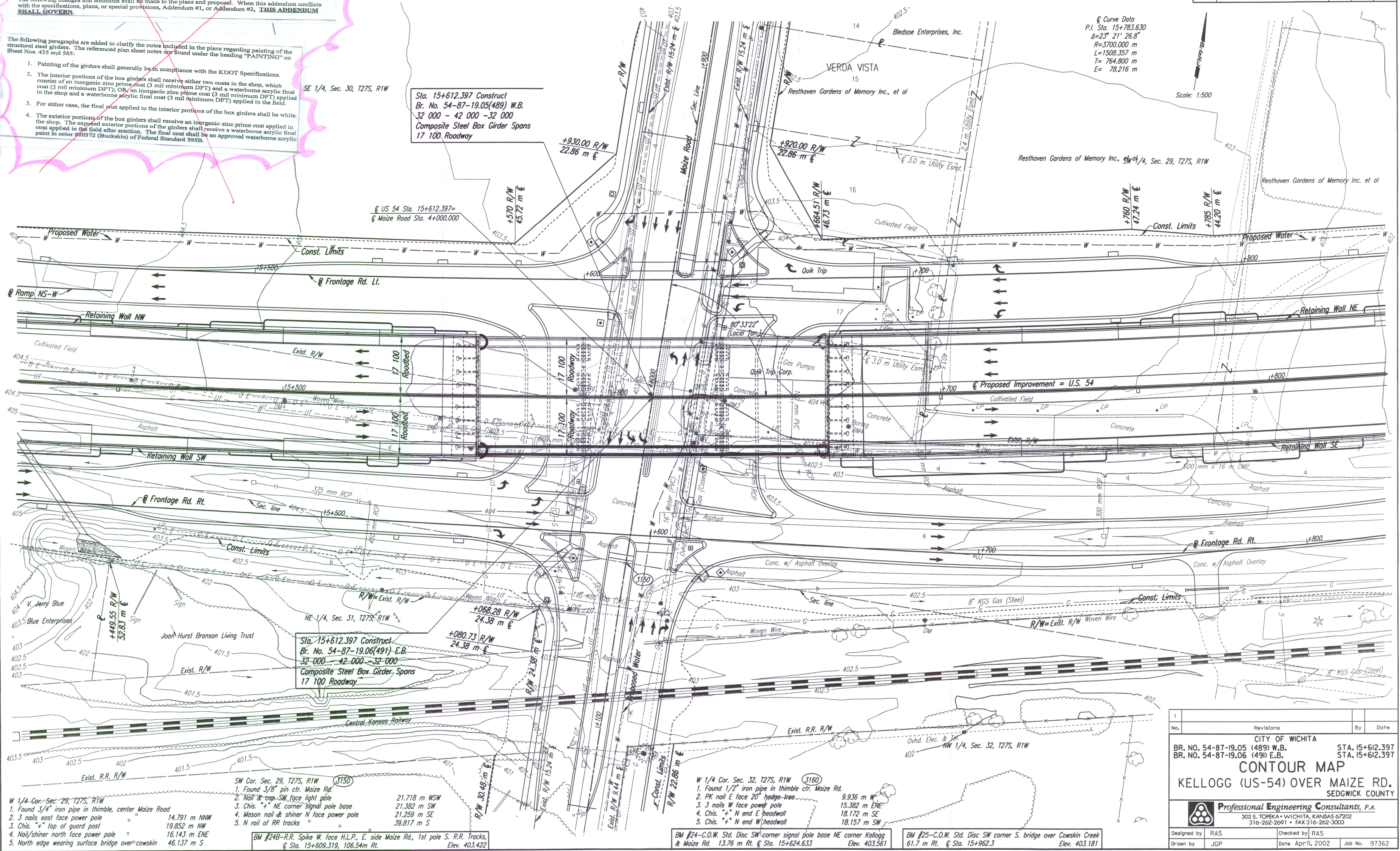
SE 1/4, Sec. 30, T27S, R1W

Sta. 15+612.397 Construct
Br. No. 54-87-19.05(489) W.B.
32 000 - 42 000 - 32 000
Composite Steel Box Girder Spans
17 100 Roadway

Curve Data
P.I. Sta. 15+783.630
Δ=23° 21' 26.8"
R=3700.000 m
L=1508.357 m
T=764.800 m
E=78.216 m

Scale: 1:500

DATE	
BY	
REFERENCES NOTED	
REFERENCES CHECKED	



DSNR: RAS OPER: WLL SCALE: 1:500
 1/1997/97362/001/BRIDGE/MAIZERD/MAIZECON.DGN 10-29-1999 9:20:20 LAST REV: 3-25-02 BY: ras

- W 1/4 Cor. Sec. 29, T27S, R1W
1. Found 3/4" iron pipe in thimble, center Maize Road
 2. 3 nails east face power pole
 3. Chis. "+" top of guard post
 4. Nail/shiner north face power pole
 5. North edge wearing surface bridge over cowskin

- SW Cor. Sec. 29, T27S, R1W
1. Found 3/8" pin ctr. Maize Rd
 2. Nail & cap SW face light pole
 3. Chis. "+" NE corner signal pole base
 4. Mason nail & shiner N face power pole
 5. N rail of RR tracks

BM #24B-R.R. Spike W. face H.L.P., E. side Maize Rd., 1st pole S. R.R. Tracks,
Elev. 403.422

- 21.718 m WSW
21.382 m SW
21.259 m SE
39.817 m S

- W 1/4 Cor. Sec. 32, T27S, R1W
1. Found 1/2" iron pipe in thimble ctr. Maize Rd.
 2. PK nail E face 20' hedge-tree
 3. 3 nails W face power pole
 4. Chis. "+" N end E headwall
 5. Chis. "+" N end W headwall

BM #24-C.O.W. Std. Disc SW corner signal pole base NE corner Kellogg
& Maize Rd. 13.76 m Rt. @ Sta. 15+624.633 Elev. 403.561

BM #25-C.O.W. Std. Disc SW corner S. bridge over Cowskin Creek
61.7 m Rt. @ Sta. 15+962.3 Elev. 403.181

No.	Revisions	By	Date
CITY OF WICHITA BR. NO. 54-87-19.05 (489) W.B. STA. 15+612.397 BR. NO. 54-87-19.06 (491) E.B. STA. 15+612.397			
CONTOUR MAP KELLOGG (US-54) OVER MAIZE RD. SEDGWICK COUNTY			
Professional Engineering Consultants, P.A. 303 S. TOPEKA • WICHITA, KANSAS 67202 316-262-2691 • FAX 316-262-3003			
Designed by	RAS	Checked by	RAS
Drawn by	JGP	Date	April, 2002
		Job No.	97362