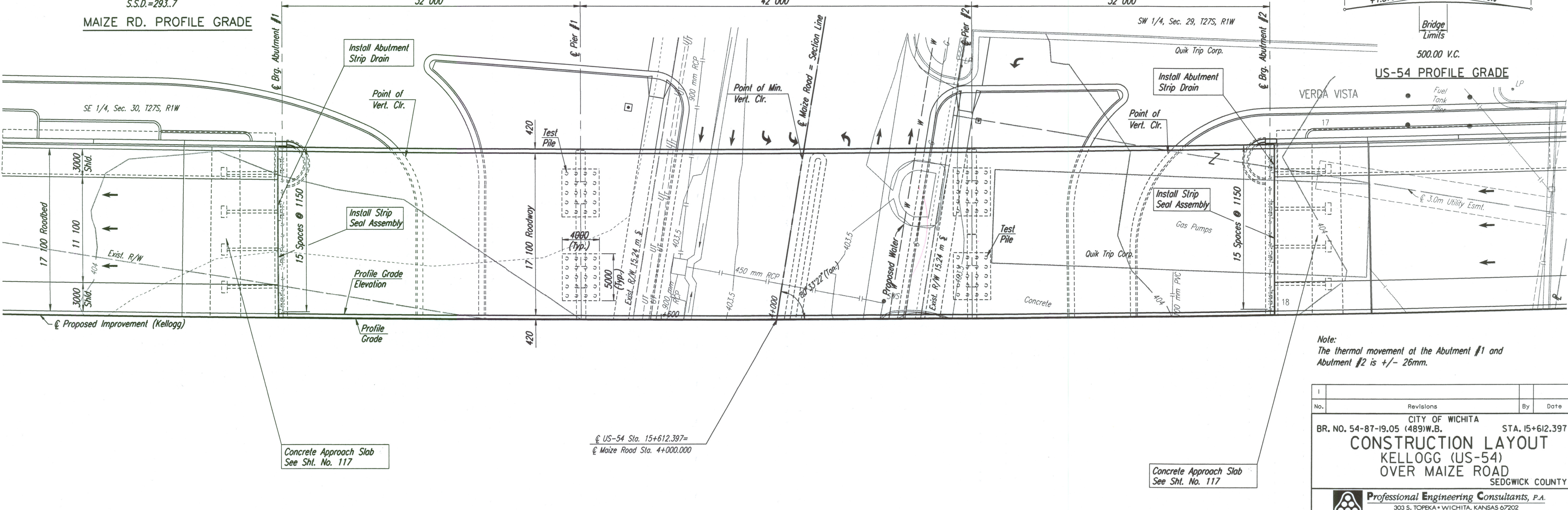
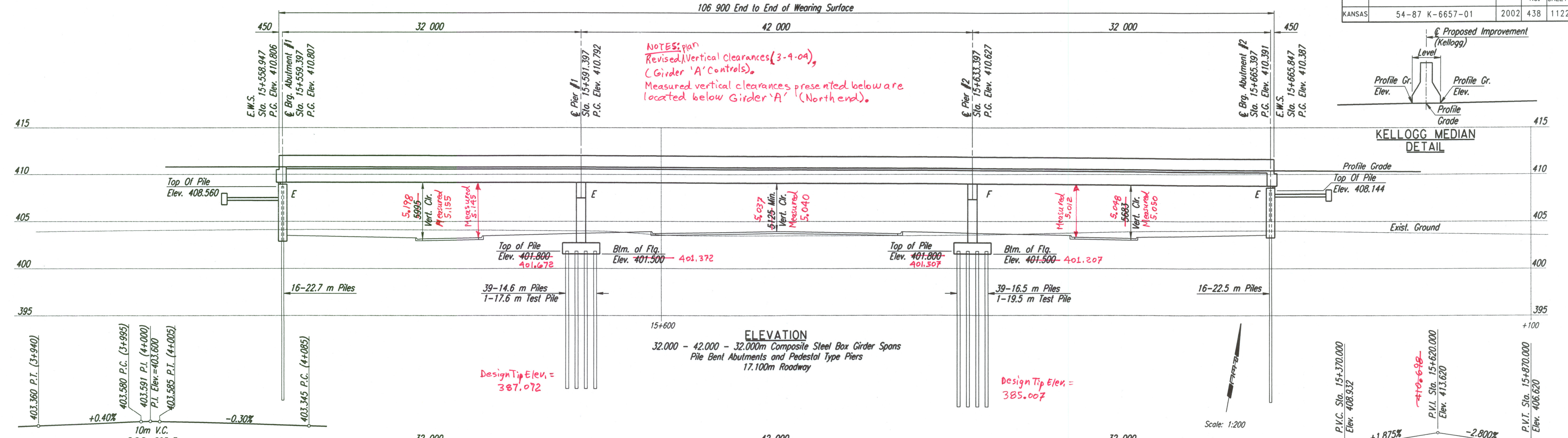
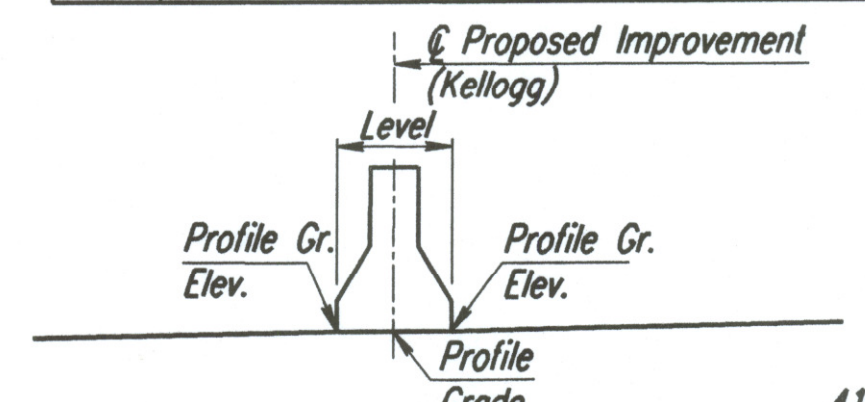


STATE	PROJECT NO.	YEAR	SHEET NO.	TOTAL SHEETS
KANSAS	54-87 K-6657-01	2002	438	1122

DATE	
BY	
REFERENCES NOTED	
REFERENCES CHECKED	

NOTES: plan
 Revised Vertical Clearances (3-4-04),
 (Girder 'A' Controls).
 Measured vertical clearances presented below are
 located below Girder 'A' (North end).



Note:
 The thermal movement at the Abutment #1 and
 Abutment #2 is +/- 26mm.

No.	Revisions	By	Date
CITY OF WICHITA			
BR. NO. 54-87-19.05 (489)W.B.		STA. 15+612.397	
CONSTRUCTION LAYOUT			
KELLOGG (US-54)			
OVER MAIZE ROAD			
SEDGWICK COUNTY			
Professional Engineering Consultants, P.A.			
303 S. TOPEKA • WICHITA, KANSAS 67202			
316-262-2691 • FAX 316-262-3003			
Designed by	RAS	Checked by	RAS
Drawn by	JGP	Date	April, 2002
		Job No.	97362

Drawn by: will
 Plotted by: drp 3-22-2002
 1:1997/97362/001/bridge/malzerd/malzerd

BM #24B-RR Spike west face Power pole, E. of Maize Rd., 1st pole S
 of RR tracks. 106.5 m Rt. @ Sta. 15+609.3 Elev. 403.422

BM #24-C.O.W. Std. Disc SW corner signal pole base NE corner Kellogg
 & Maize Rd. 13.7 m Rt. @ Sta. 15+624.6 Elev. 403.561

BM #25-C.O.W. Std. Disc SW corner S. bridge over Cowskin Creek
 61.7 m Rt. @ Sta. 15+962.3 Elev. 403.181

PLAN