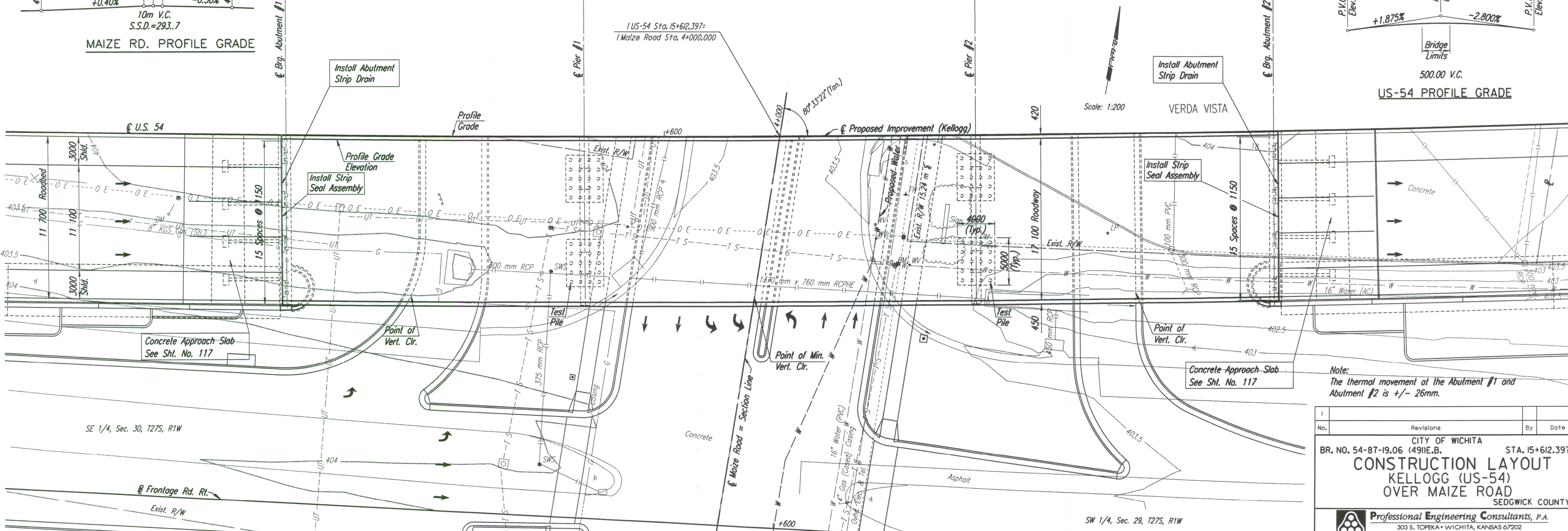
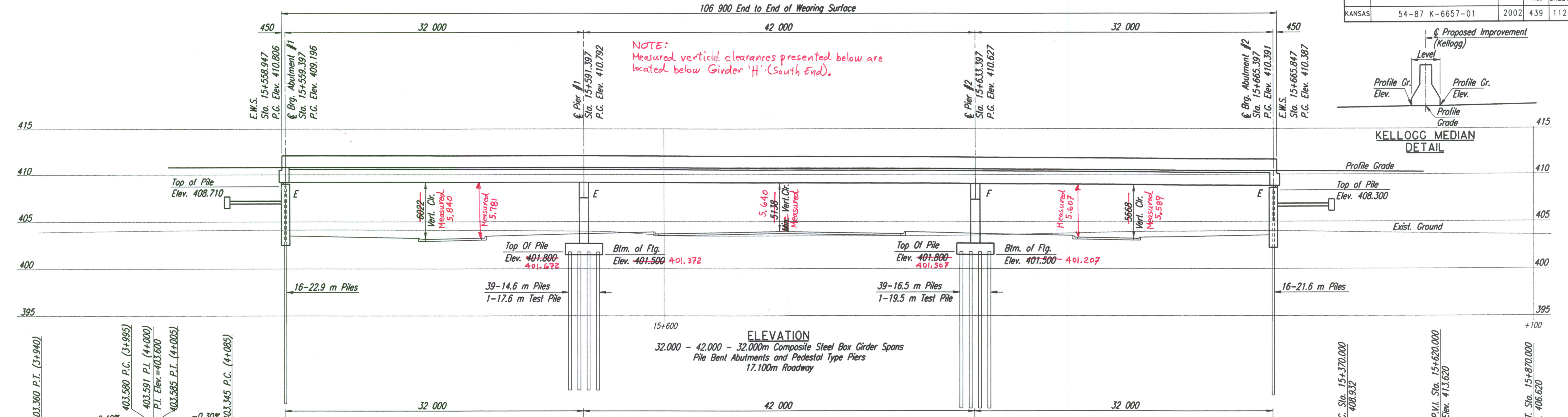
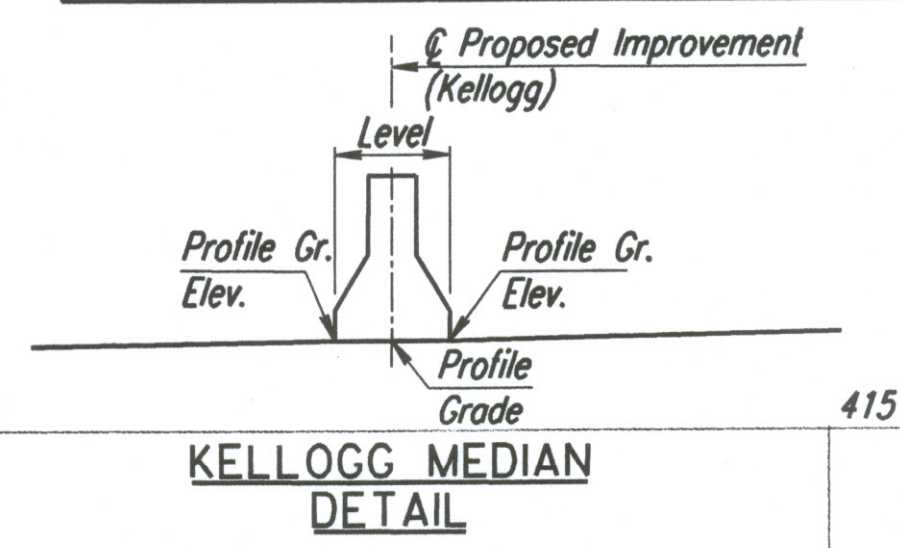


STATE	PROJECT NO.	YEAR	SHEET NO.	TOTAL SHEETS
KANSAS	54-87 K-6657-01	2002	439	1122

DATE	
BY	
REFERENCES NOTED	
REFERENCES CHECKED	

NOTE:  
Measured vertical clearances presented below are located below Girder 'H' (South End).



Note:  
The thermal movement at the Abutment #1 and Abutment #2 is +/- 26mm.

No.	Revisions	By	Date
CITY OF WICHITA BR. NO. 54-87-19.06 (49)E.B. STA. 15+612.397 <b>CONSTRUCTION LAYOUT KELLOGG (US-54) OVER MAIZE ROAD</b> SEDGWICK COUNTY			
Professional Engineering Consultants, P.A. 303 S. TOPEKA • WICHITA, KANSAS 67202 316-262-2691 • FAX 316-262-3003			
Designed by	RAS	Checked by	RAS
Drawn by	JGP	Date	April, 2002
Job No. 97362			

Drawn by: will  
Plotted by: drp 3-21-2002  
14/1997/97362/001/bridge/maize rd/maztoyleb

BM #24B-RR Spike west face Power pole, E. of Maize Rd., 1st pole S of RR tracks. 106.5 m Rt. @ Sta. 15+609.3 Elev. 403.422

BM #24-C.O.W. Std. Disc SW corner signal pole base NE corner Kellogg & Maize Rd. 13.7 m Rt. @ Sta. 15+624.6 Elev. 403.561

BM #25-C.O.W. Std. Disc SW corner S. bridge over Cowskin Creek 61.7 m Rt. @ Sta. 15+962.3 Elev. 403.181