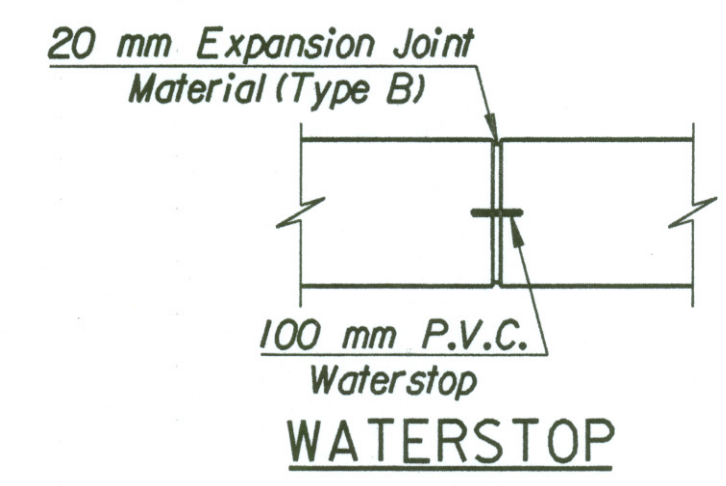


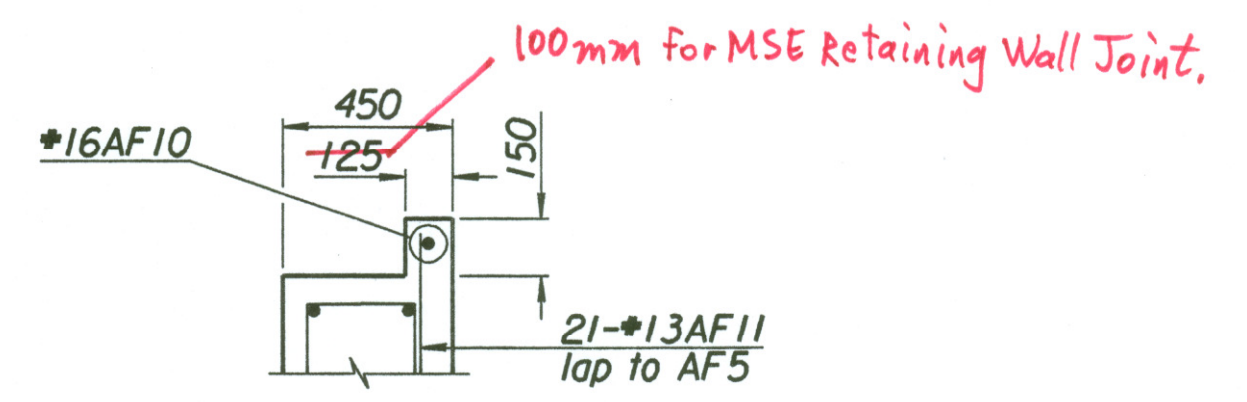
**ELEVATION**

Abutment No. 1 shown looking backstation  
Abutment No. 2 similar mirrored about & Brg.

**LEGEND:**  
N.F. = Near Face  
F.F. = Far Face  
E.F. = Each Face



**WATERSTOP**



**PARTIAL PLAN**

This detail complies with the Alt. No. 2.  
NOTE: For Alt. No. 1 detail see plan this sheet.  
Additional reinforcing required for Alt. No. 2 bid is 1-\*16AF10 and 21-\*13AF11. Additional concrete and reinforcing are considered subsidiary.

**TABLE OF ELEVATIONS**

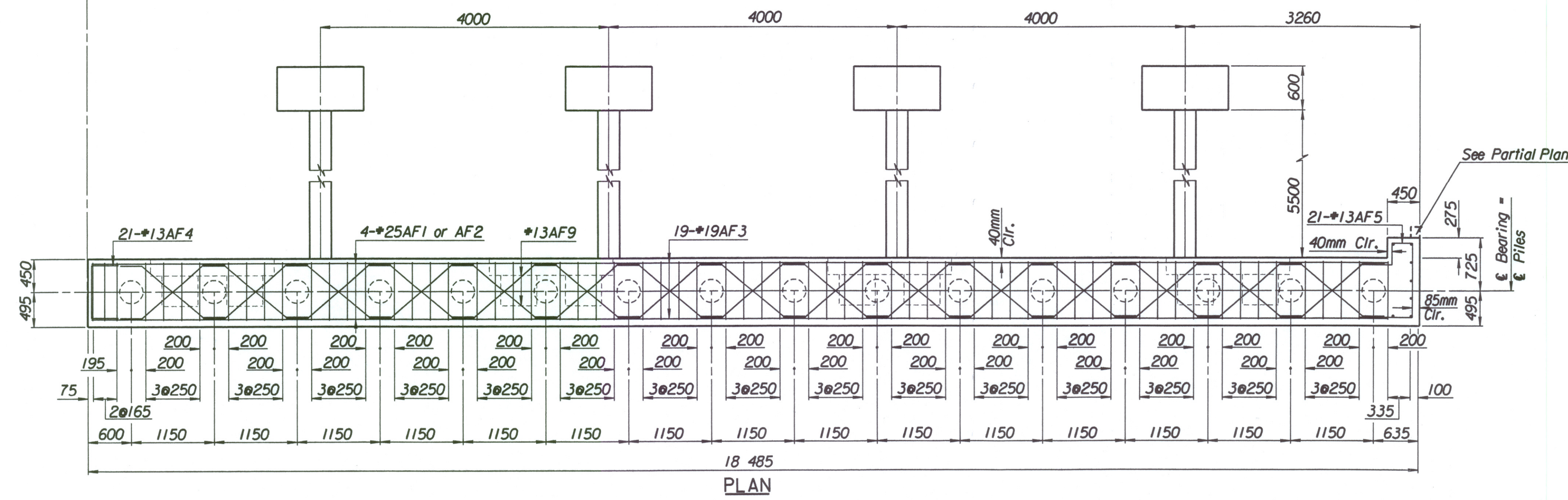
Location	Abut. #1 Elevation	Abut. #2 Elevation
Elev. A	408.854	408.438
Elev. B	408.571	408.155
Elev. C	410.464	410.048
Elev. D	410.807	410.391
Elev. E	408.668	408.252
Elev. F	408.763	408.346
Elev. G	408.857	408.441
Elev. H	408.951	408.535
Elev. I	402.636	402.220
Elev. J	408.560	408.144

408.653  
408.748  
408.842  
408.936

408.237  
408.331  
408.426  
408.520

**Abutment Pile Loadings (kN)**

Group I Loading	Actual	Allowable
	415	440



**PLAN**

No.	Revisions	By	Date
CITY OF WICHITA			
BR. NO. 54-87-19.05(489) W.B.		STA. 15+612.397	
<b>KELLOGG OVER MAIZE ROAD ABUTMENT DETAILS</b>			
SEDGWICK COUNTY			
Professional Engineering Consultants, P.A. 903 S. TOPEKA • WICHITA, KANSAS 67202 316-262-2691 • FAX 316-262-3003			
Designed by	RAS	Checked by	RAS
Drawn by	RAS	Date	April 11, 2002
		Job No.	97362

Drawn By: ras  
 Plotted By: drp 4-10-2002  
 I:/1997/97362/001/bridge/maizerd/abmt1wb.dgn