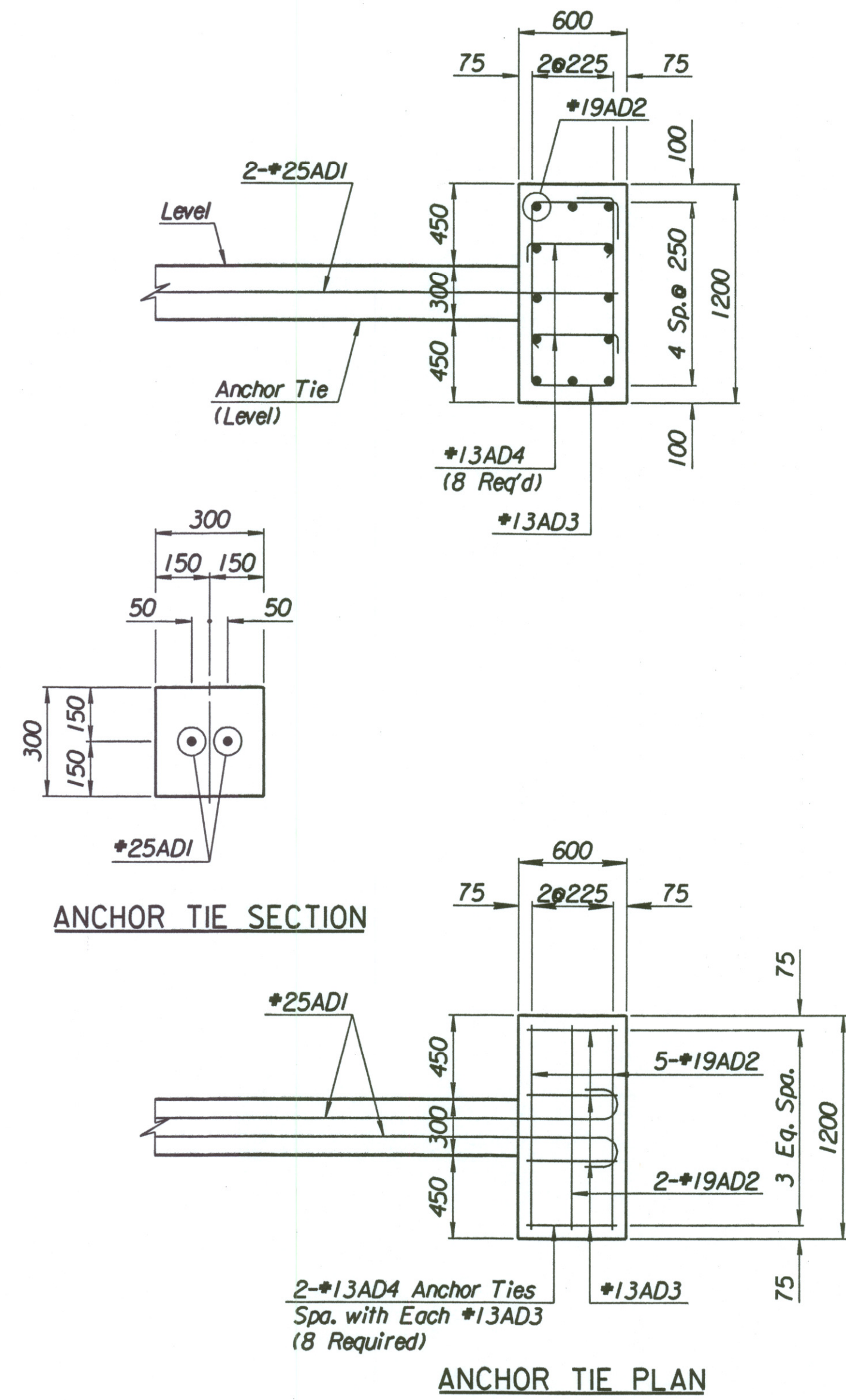
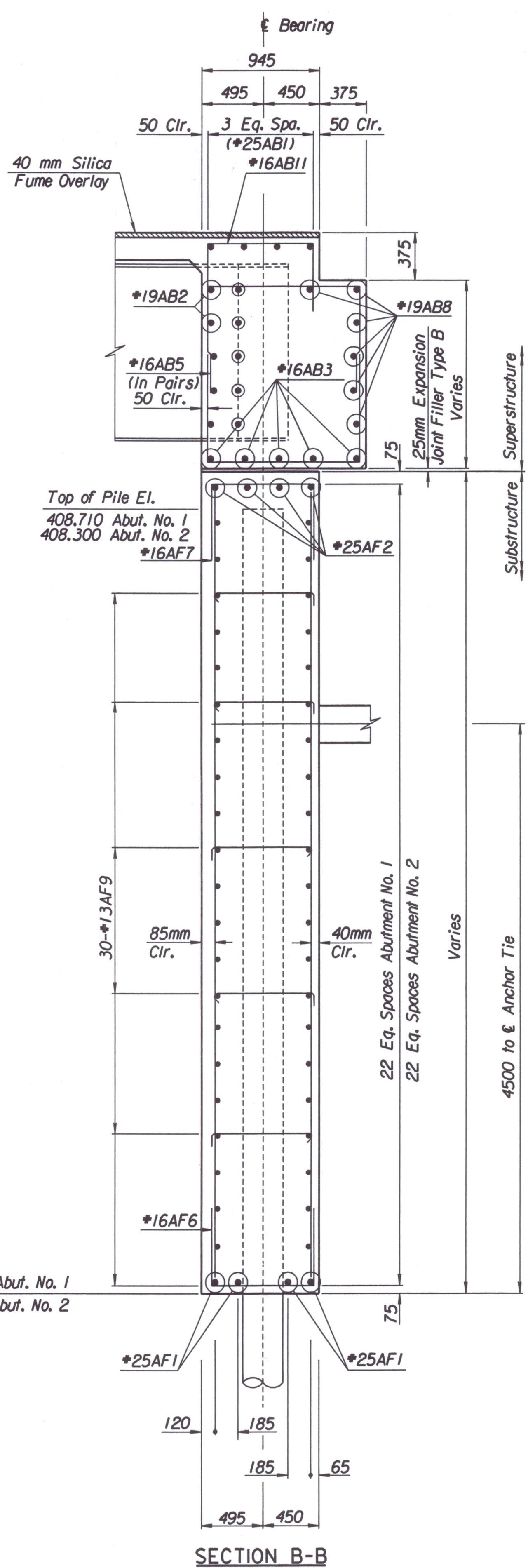
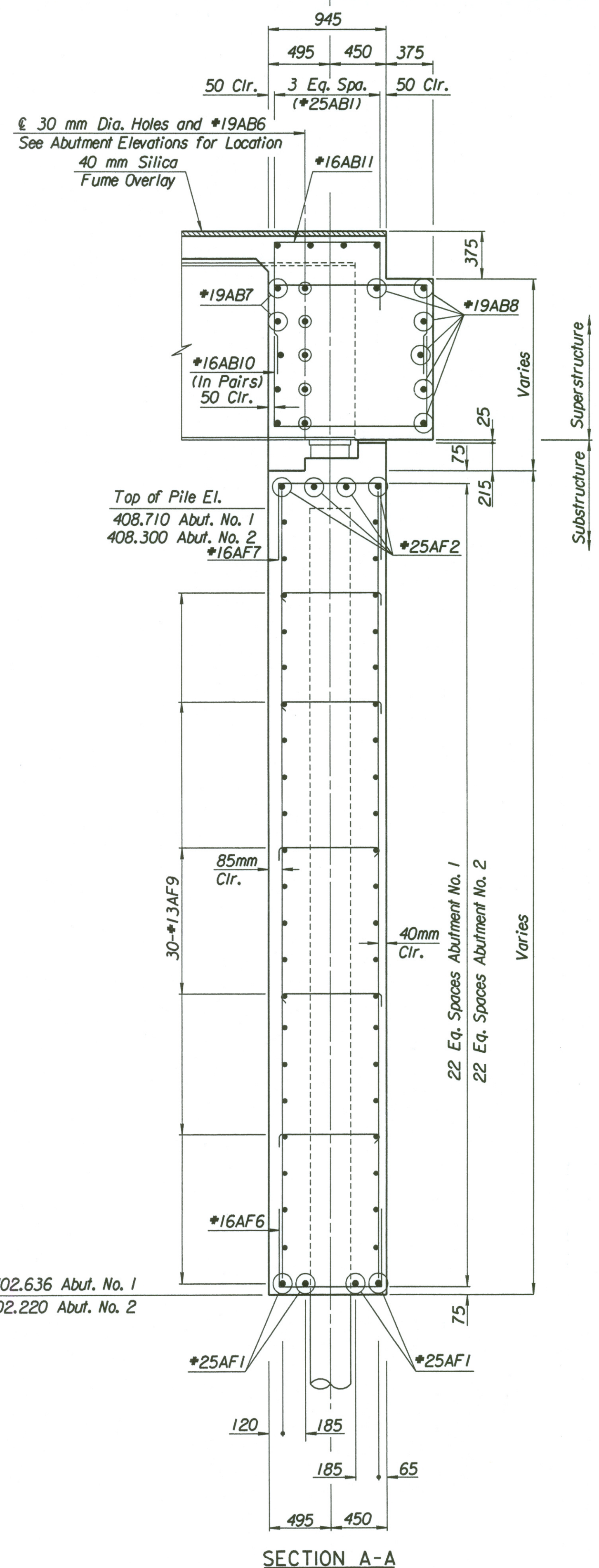


STATE	PROJECT NO.	YEAR	SHEET NO.	TOTAL SHEETS
KANSAS	54-87 K-6657-01	2002	447	1122



Drawn By: ras
 Plotted By: drp 3-22-2002
 i:/1997/97362/001/bridge/maizerd/abmt1eb.dgn

No.	Revisions	By	Date
CITY OF WICHITA BR. NO. 54-87-19.06(491) E.B. STA. 15+612.397 KELLOGG OVER MAIZE ROAD ABUTMENT SECTIONS SEDGWICK COUNTY			
Professional Engineering Consultants, P.A. 303 S. TOPEKA - WICHITA, KANSAS 67202 316-262-2691 • FAX 316-262-3003			
Designed by	RAS	Checked by	RAS
Drawn by	RAS	Date	April, 2002 Job No. 97362