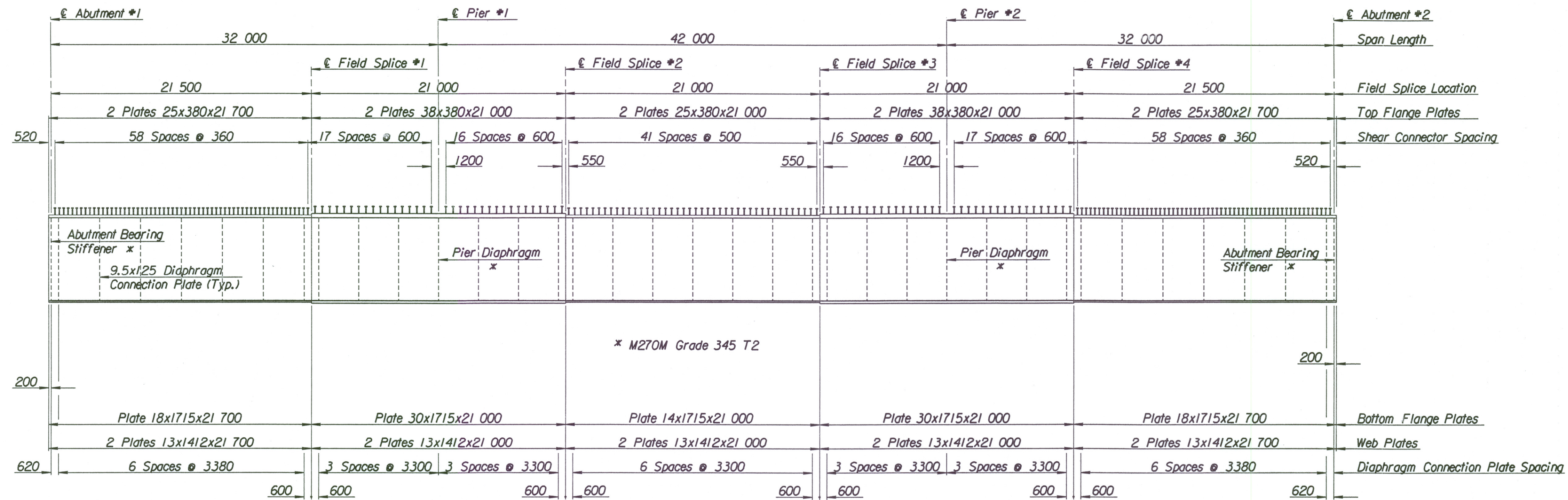
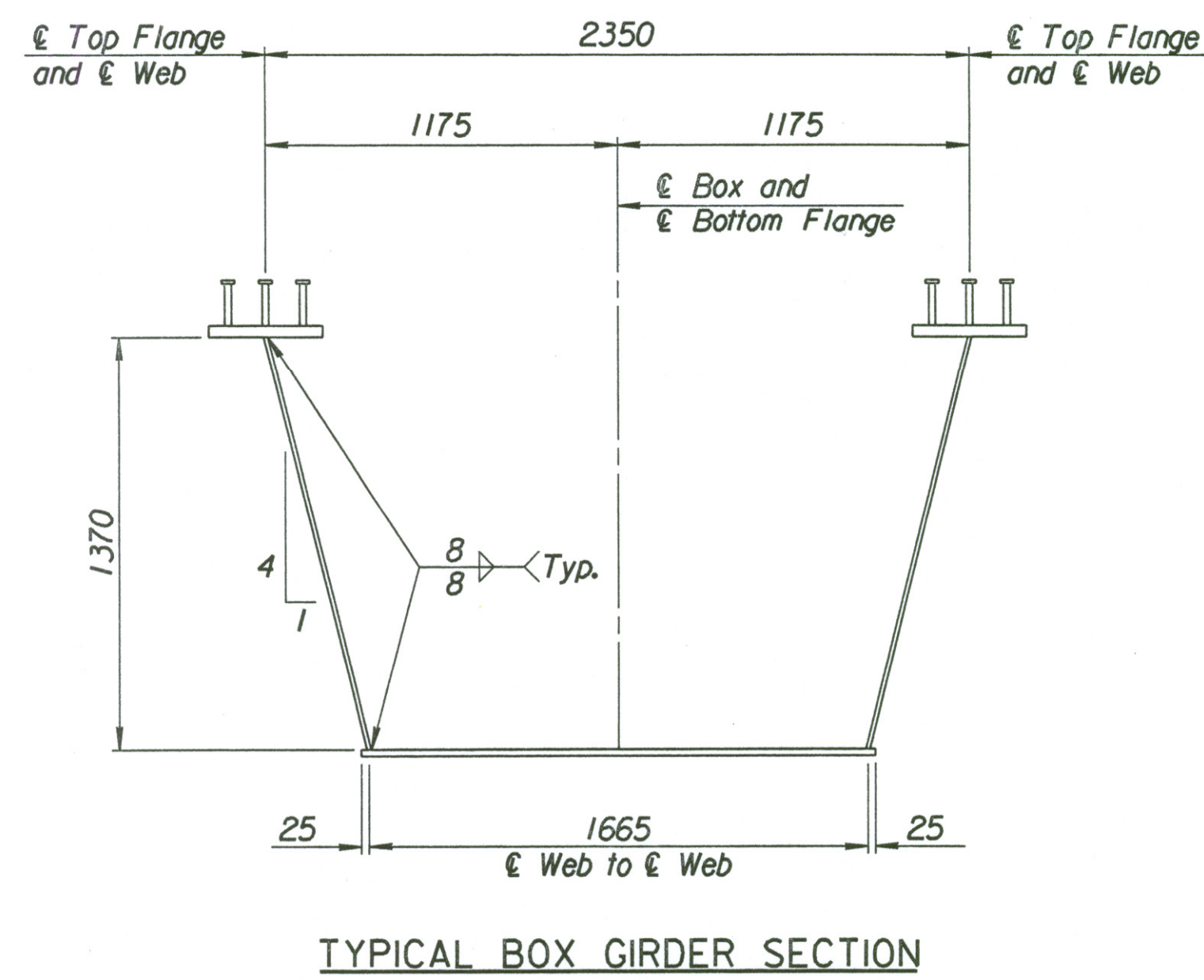


STATE	PROJECT NO.	YEAR	SHEET NO.	TOTAL SHEETS
KANSAS	54-87 K-6657-01	2002	459	1122

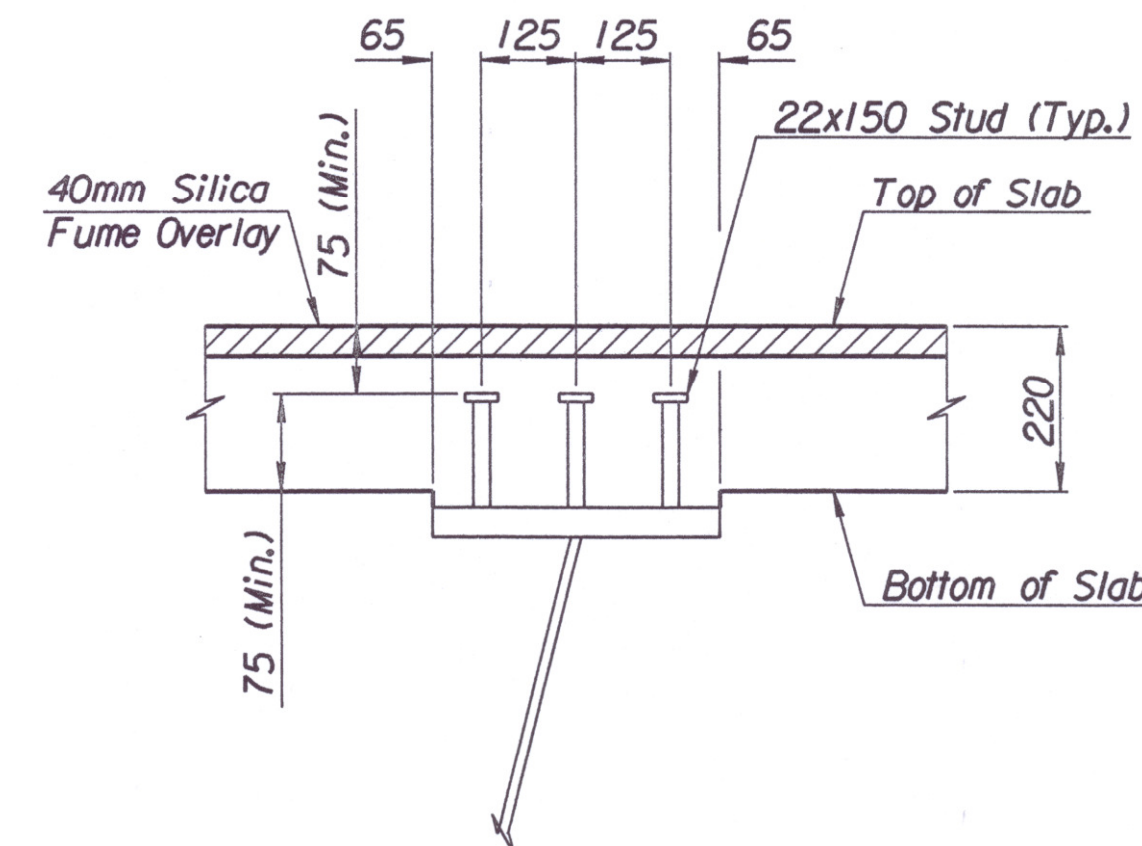


GIRDER ELEVATION

Note:
 Unless otherwise noted, all longitudinal dimensions are measured horizontally along flange centerlines. Length of flanges and web plates shall be corrected as required for grade, vertical curvature and shrinkage caused by welding. Abutment, pier and field splice centerlines are shown at centerline of Box.
 Bearing stiffeners shall be placed vertical. All bearing stiffeners shall be placed normal to centerline of Box.
 All diaphragm connection plates and intermediate stiffeners shall be 9.5x125 unless otherwise shown. Diaphragm connection plates and intermediate stiffeners shall be placed on the side of the web indicated in the framing plan.
 All intermediate stiffeners and diaphragm connection plates shall be placed normal to the flange. All intermediate stiffeners and diaphragm connection plates shall be placed normal to centerline of Box. Stiffener and connection plate lengths (inside to inside of flanges) are 1412 unless otherwise shown.

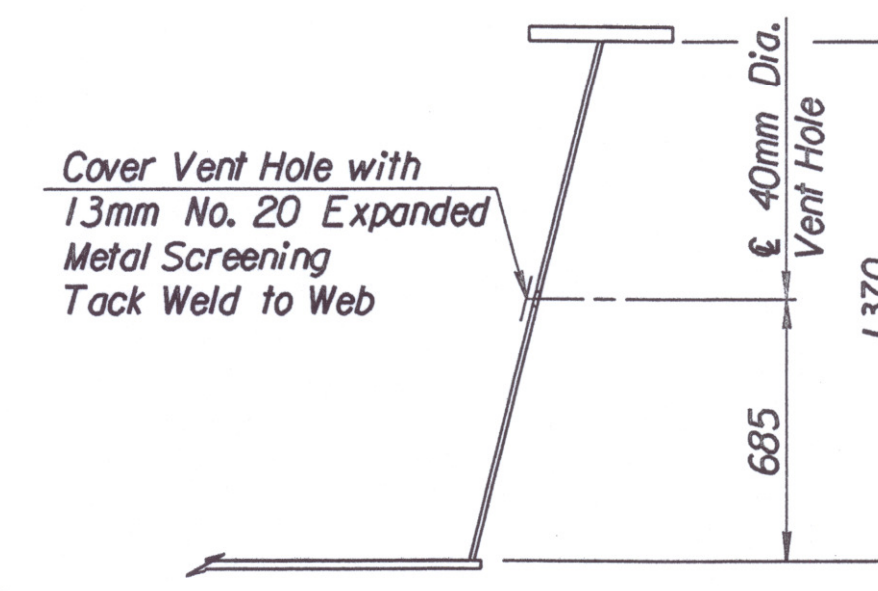


TYPICAL BOX GIRDER SECTION



SHEAR CONNECTOR DETAIL

Note:
 Length shown for studs is proposed. The actual length shall satisfy stud penetration requirements after beam erection.



WEB VENT HOLE

Place Vent Holes in Each Web at 15m Maximum Spacing, 7.5m Minimum from Pier.

STRUCTURAL STEEL SUMMARY FOR ONE GIRDER		
Girder Components	M270M Gr. 345 T2	A709M Gr. 250
Top Flange Plates	19 125	
Bottom Flange Plates	31 335	
Web Plates	30 660	
Abutment Bearing Stiffeners	589	
Pier Bearing and Jacking Stiffeners	554	
Diaphragm Connection Plates		869
Abutment Diaphragms		37
Type D-1 Diaphragms		1124
Type D-2 Diaphragms		243
Pier Diaphragms		920
Lateral Bracing		2405
Miscellaneous Structural Steel		80
Totals	82 263	5678

PERMANENT STEEL DECK FORMS: Use Type I steel deck forms conforming to ASTM A446M. Support hangers shall be a non-welded system. Do not weld to any flange. Compute the pay quantity of the concrete slab based on nominal slab dimension with no allowance for corrugations. No direct payment will be made for deck forms or any additional concrete. These items will be considered subsidiary to "Concrete (Grade 30)(AE)(SA)". Use permanent steel deck forms inside the box girders (non-exposed area) only.

Note:
 Miscellaneous Structural Steel includes Access Manhole Plate Frame, Hinged Plates at Girder Ends and Bent Plates for Drainage.

No.		Revisions		By	Date
CITY OF WICHITA					
BR. NO. 54-87-19.05 (489) W.B.			STA. 15+612.397		
BR. NO. 54-87-19.06 (491) E.B.			STA. 15+612.397		
GIRDER DETAILS					
KELLOGG (US-54)					
OVER MAIZE ROAD					
SEDGWICK COUNTY					
Professional Engineering Consultants, P.A.					
303 S. TOPEKA • WICHITA, KANSAS 67202					
316-262-2691 • FAX 316-262-3003					
Designed by	P.D.F.	Checked by	R.A.S.		
Drawn by	W.L.L.	Date	Apr., 2002	Job No. 97362	

Drawn by: will
 Plotted by: sub 3-25-2002
 i:\1997\97-362\001\bridge\maizerd\girder