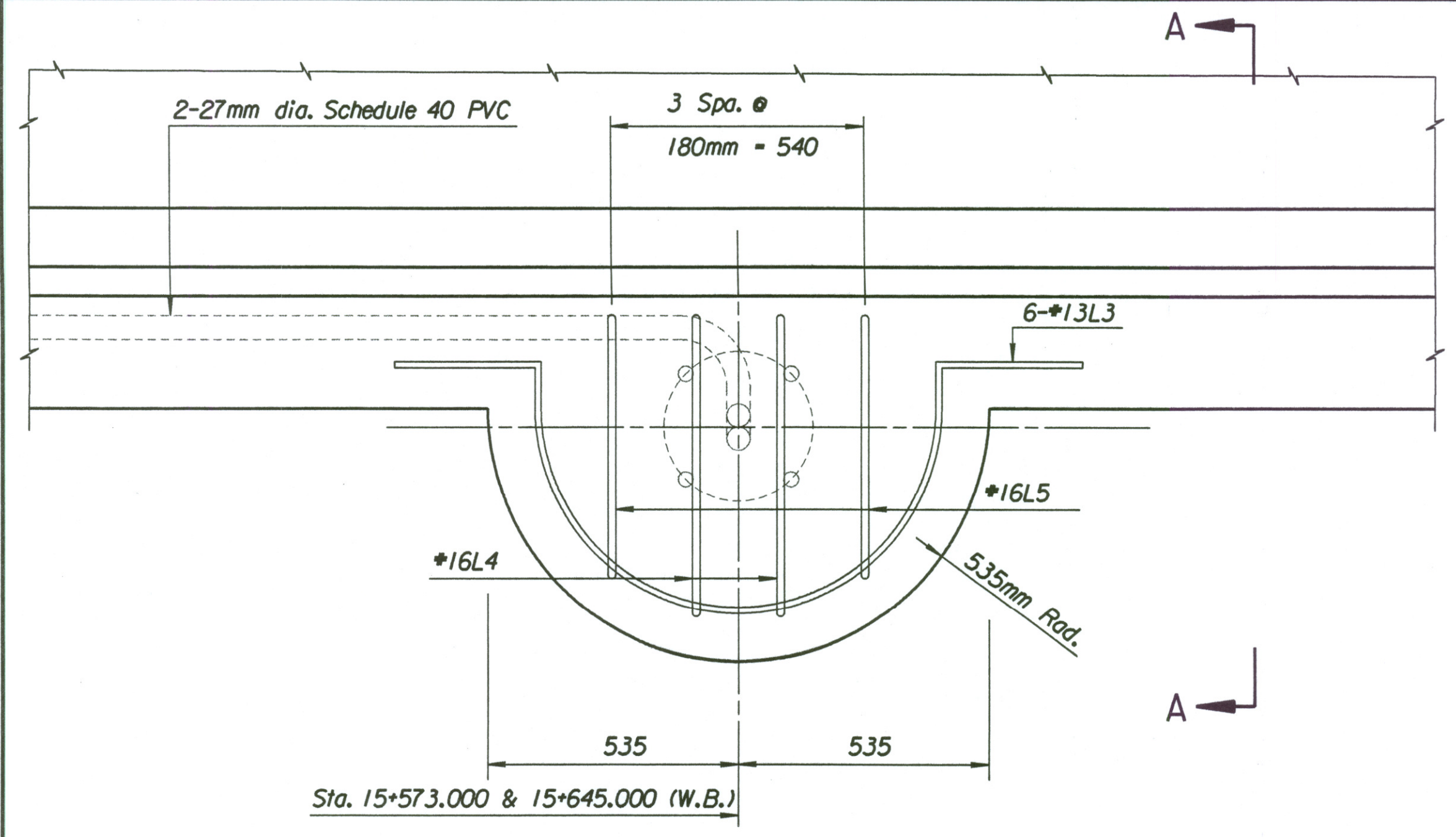
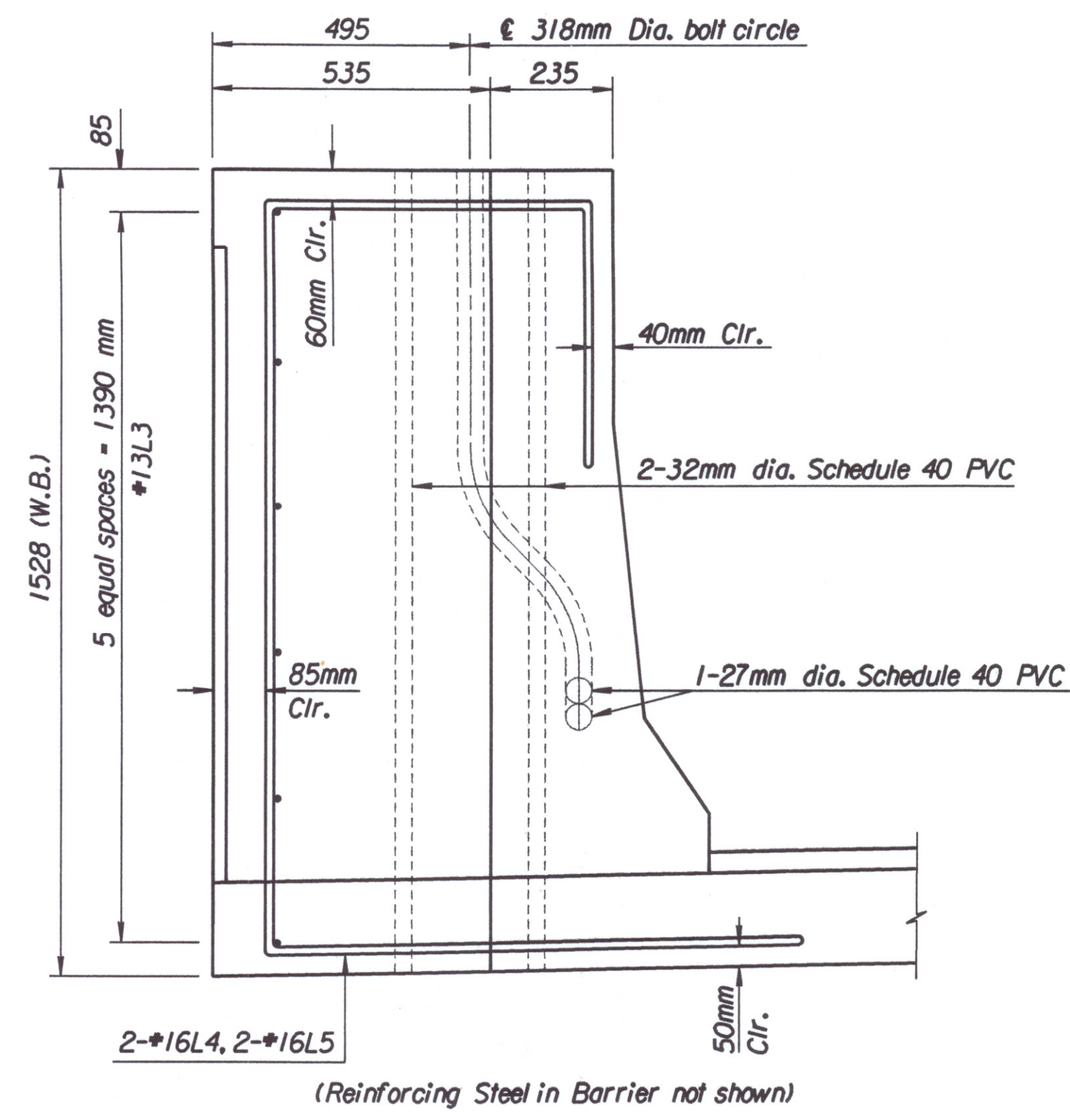


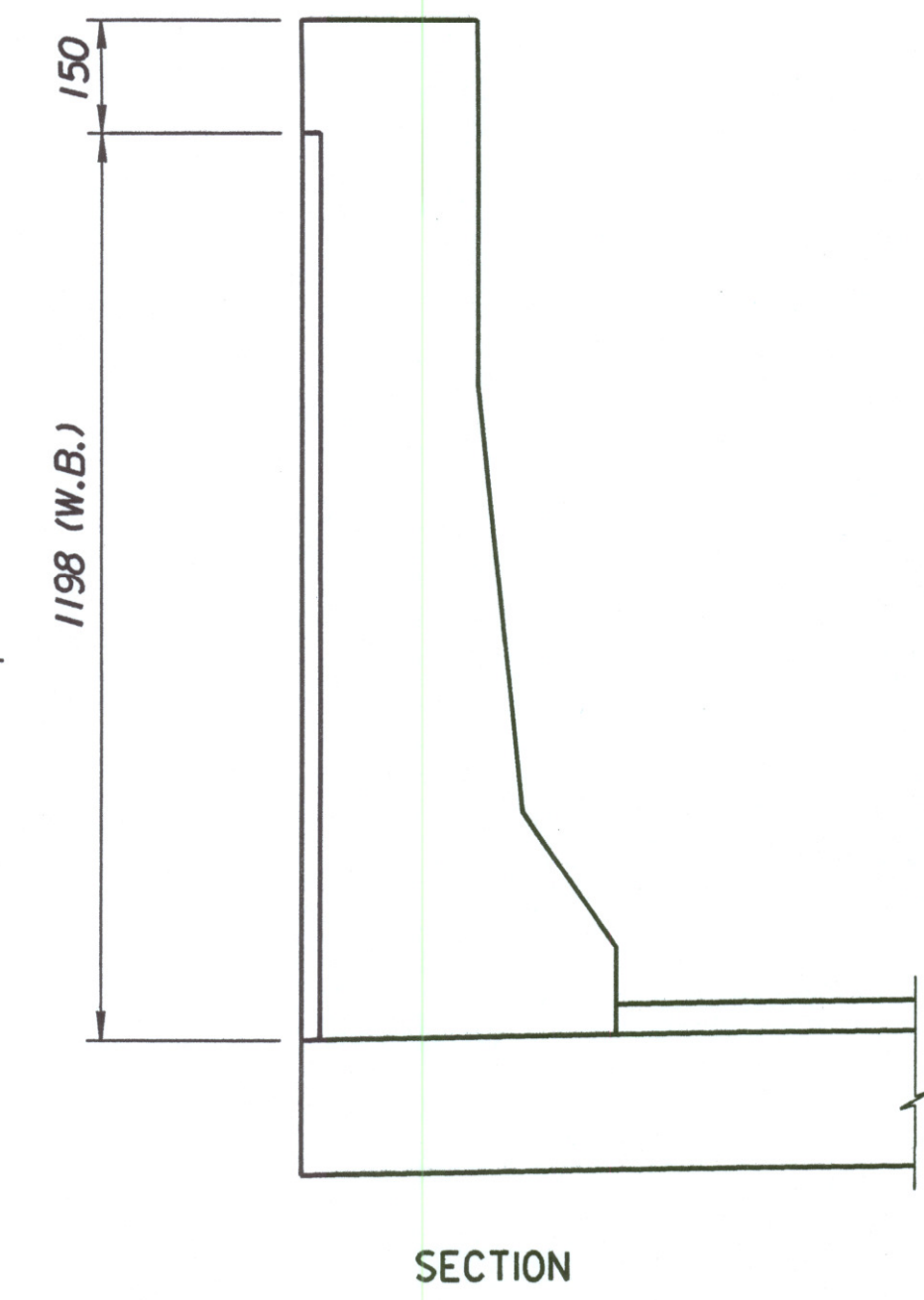
STATE	PROJECT NO.	YEAR	SHEET NO.	TOTAL SHEETS
KANSAS	54-87 K-6657-01	2002	472	1122



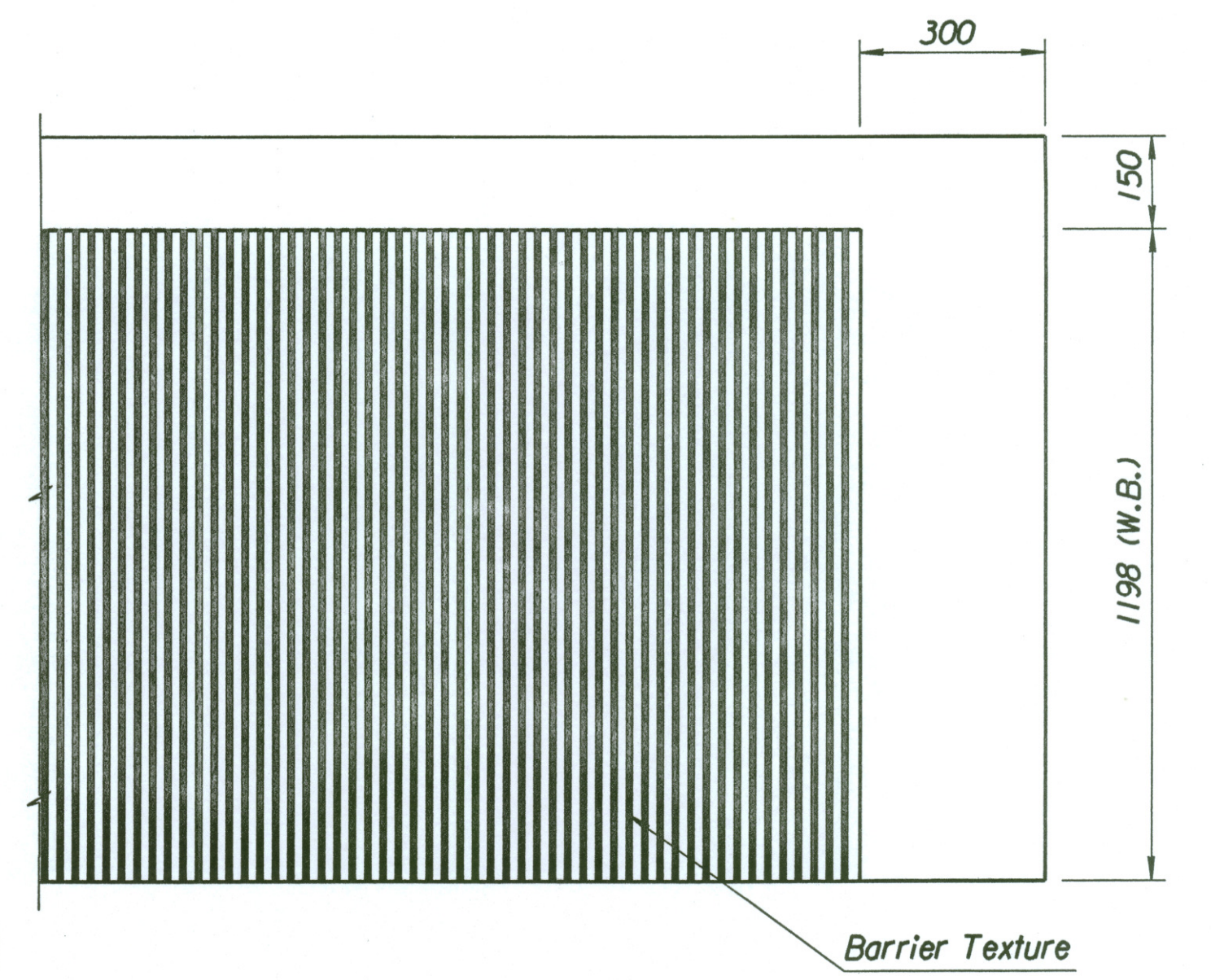
PLAN



SECTION A-A

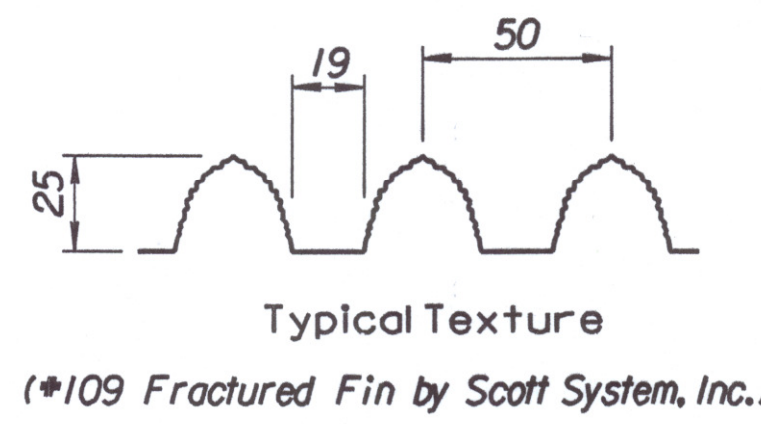


SECTION



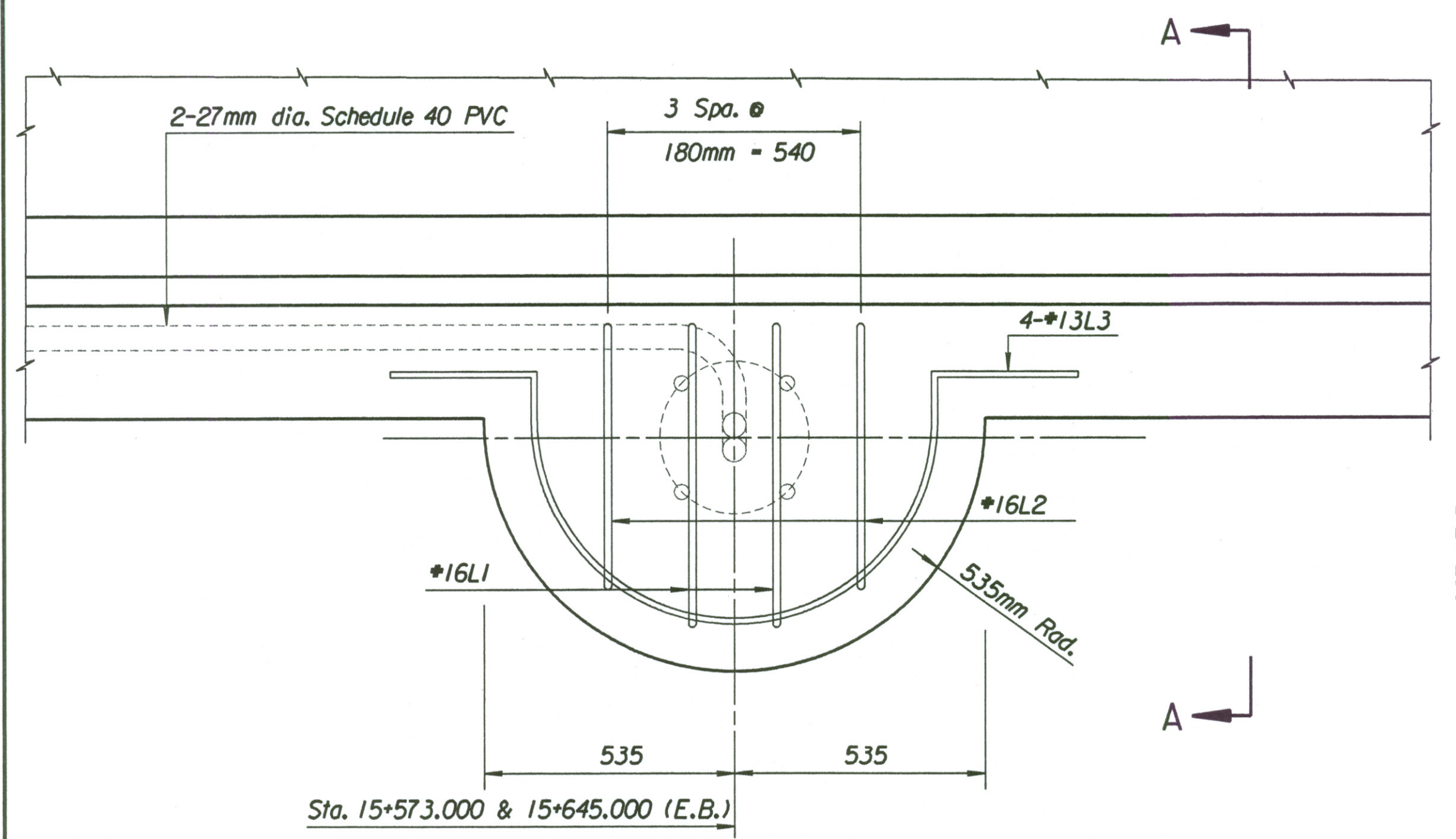
ELEVATION

Note: 1-27mm dia. PVC for conductor use  
1-27mm dia. PVC for ground use  
See Lighting Details for location.

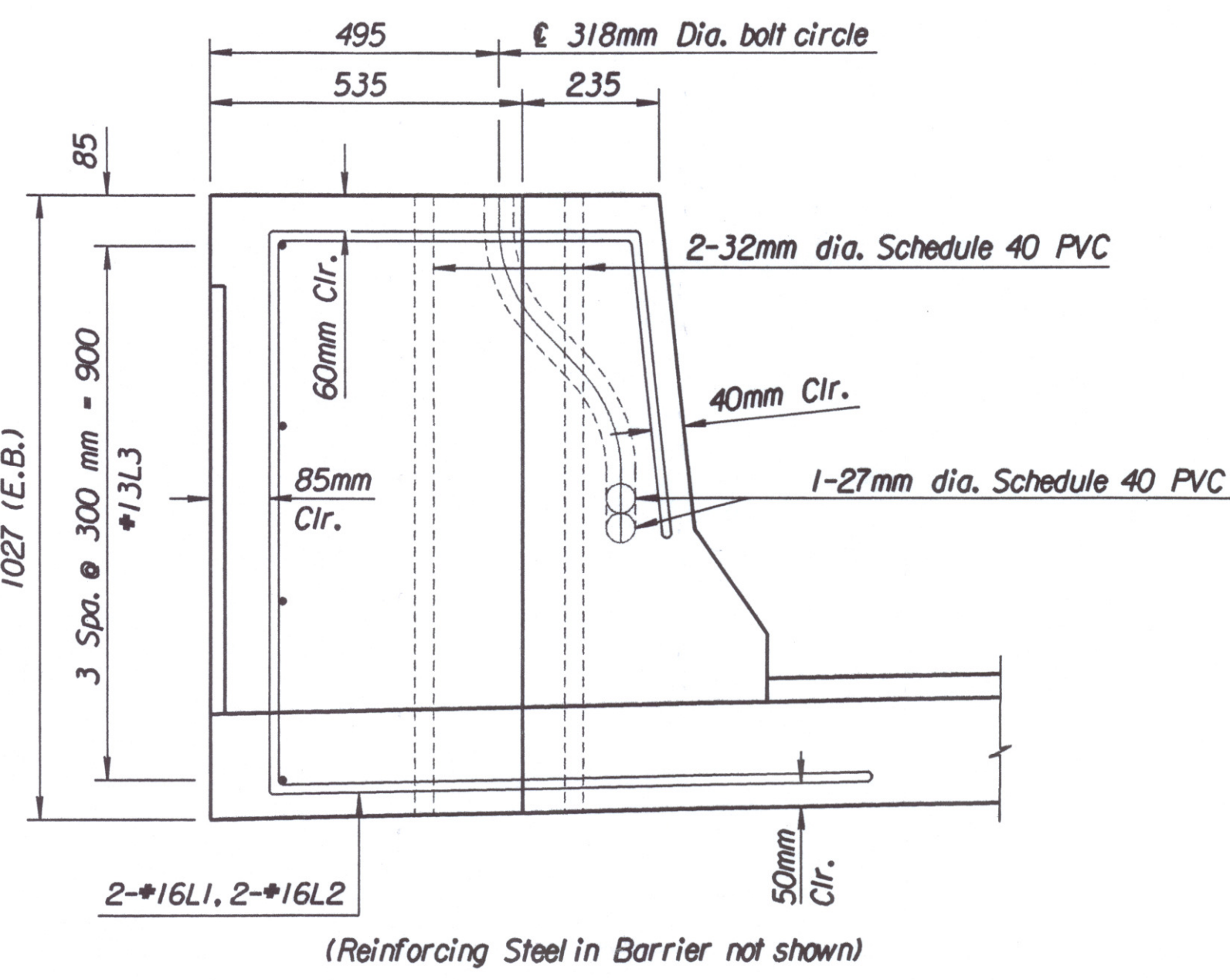


Typical Texture

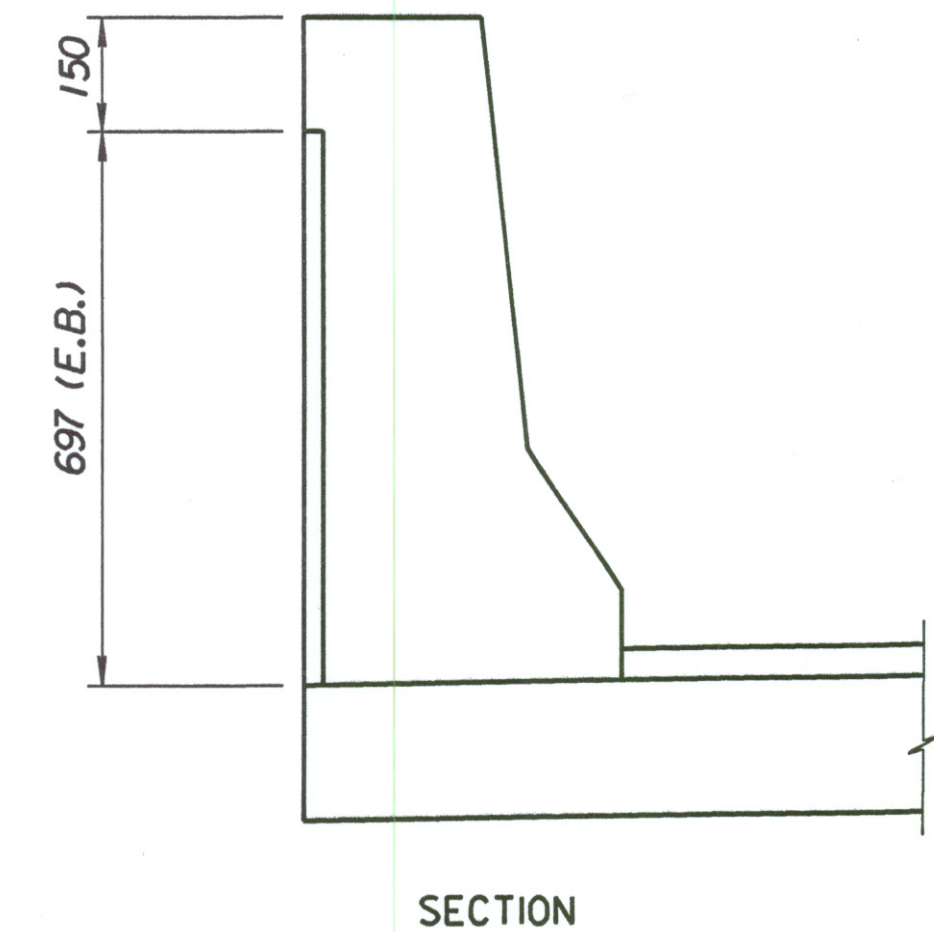
RUSTICATION DETAIL



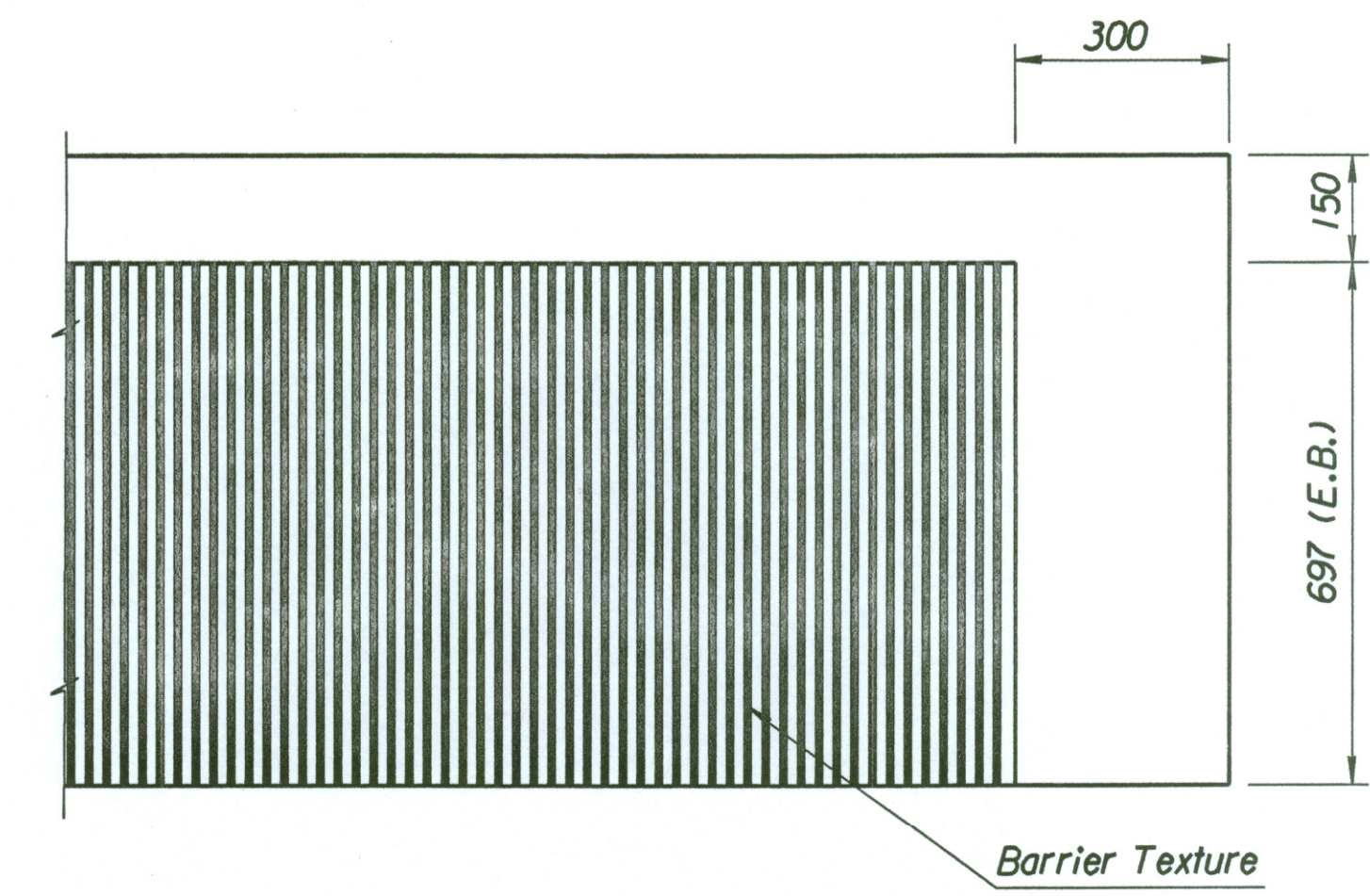
PLAN



SECTION A-A



SECTION



ELEVATION

RUSTICATION DETAIL

Drawn by: ras 3-26-2002  
Plotted by: ras 1-19-2002  
1:1997 97362/001/bridge/malzerd/lightsupdgn

No.		Revisions	By	Date
CITY OF WICHITA				
BR. NO. 54-87-19.05 (489) W.B.		STA. 15+612.397		
BR. NO. 54-87-19.06 (491) E.B.		STA. 15+612.397		
<b>MISCELLANEOUS BARRIER DETAIL</b>				
KELLOGG (US-54) OVER MAIZE ROAD				
SEDGWICK COUNTY				
<b>Professional Engineering Consultants, P.A.</b>				
303 S. TOPEKA • WICHITA, KANSAS 67202 316-262-2691 • FAX 316-262-3003				
Designed by	RAS	Checked by	RAS	
Drawn by	BJS	Date	April, 2002	Job No. 97362