

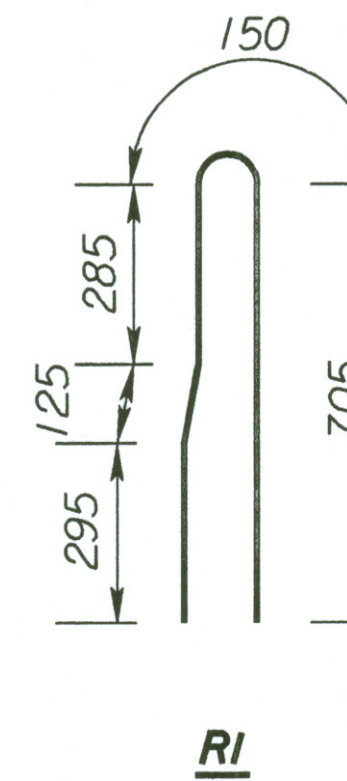
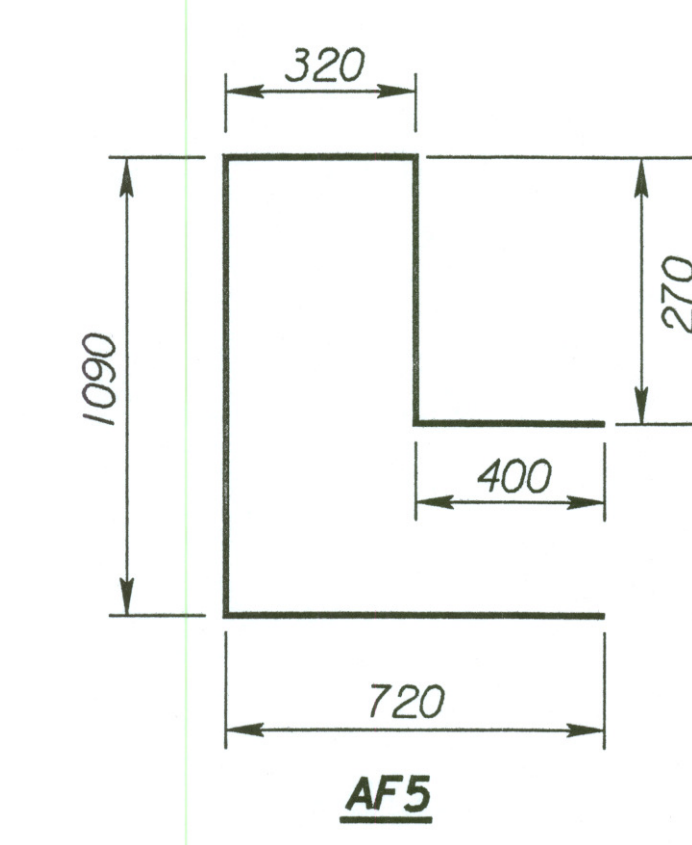
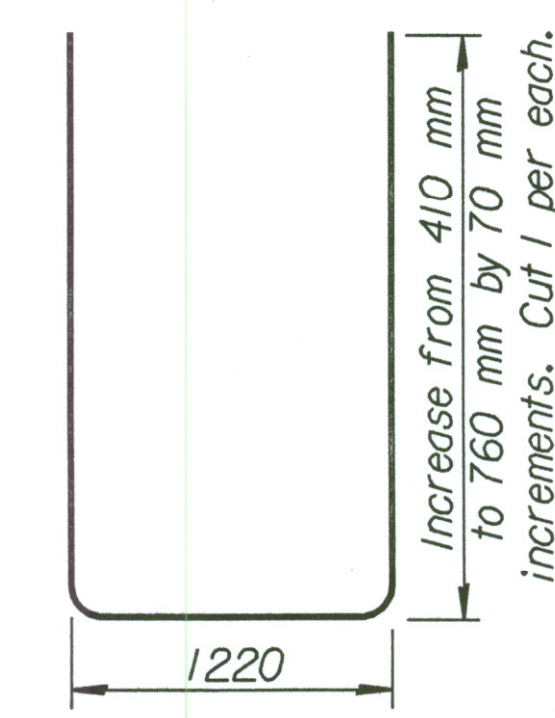
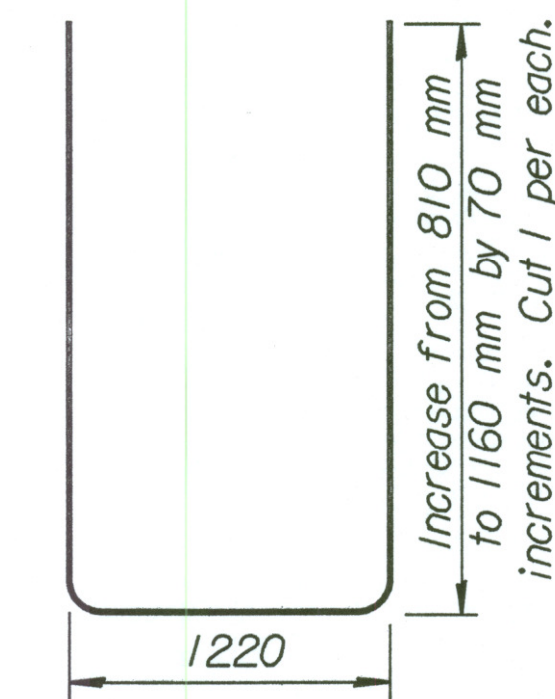
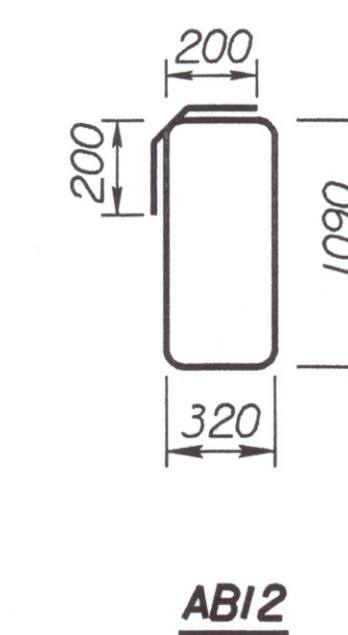
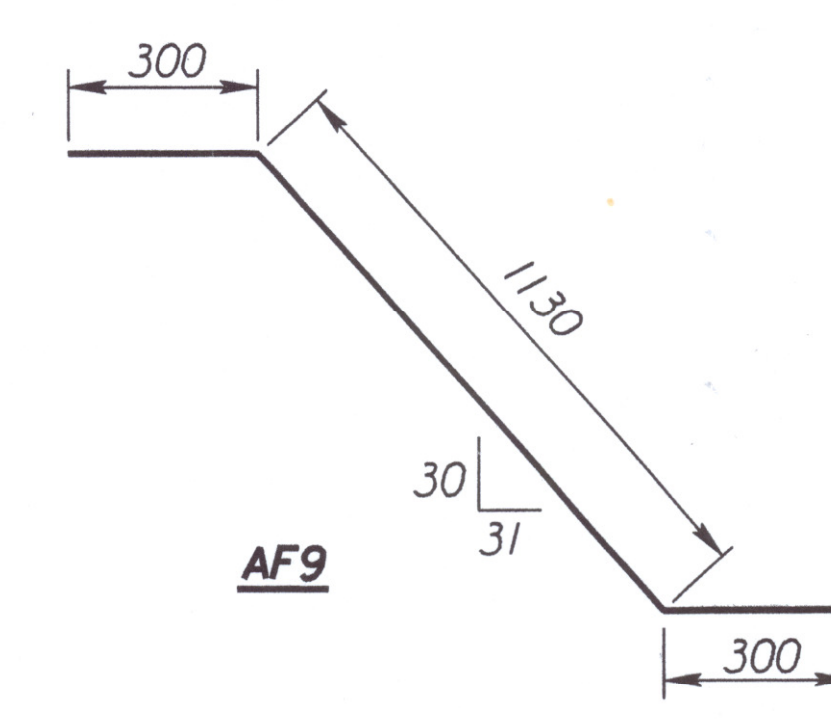
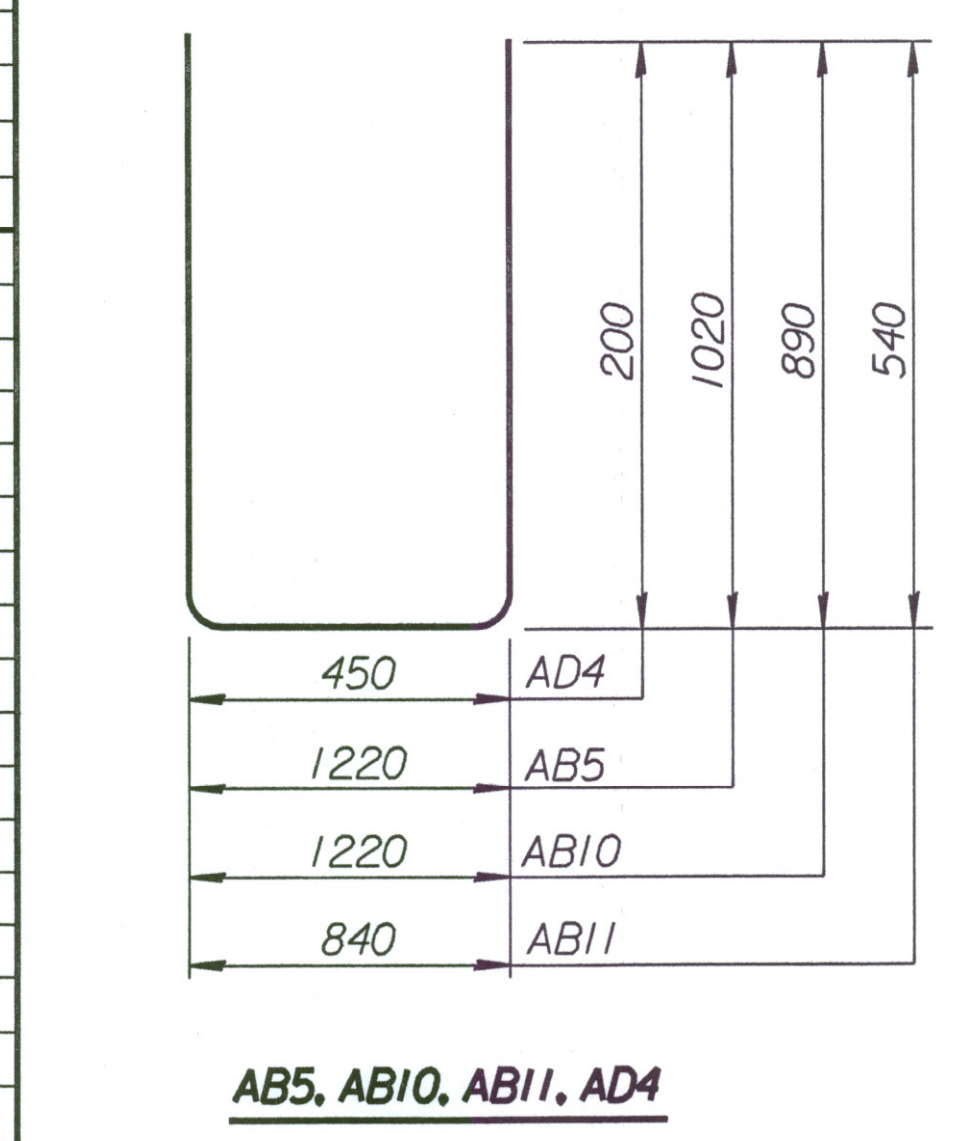
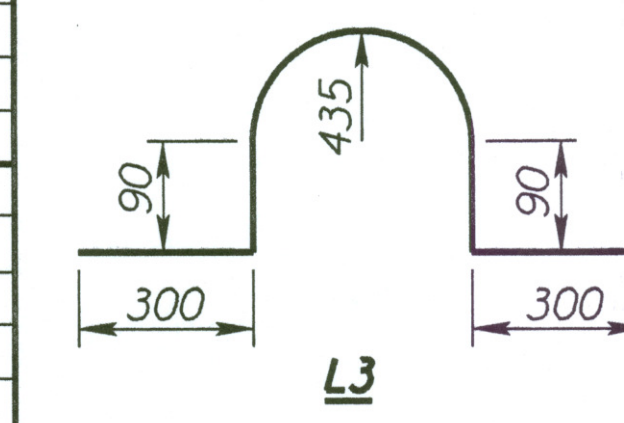
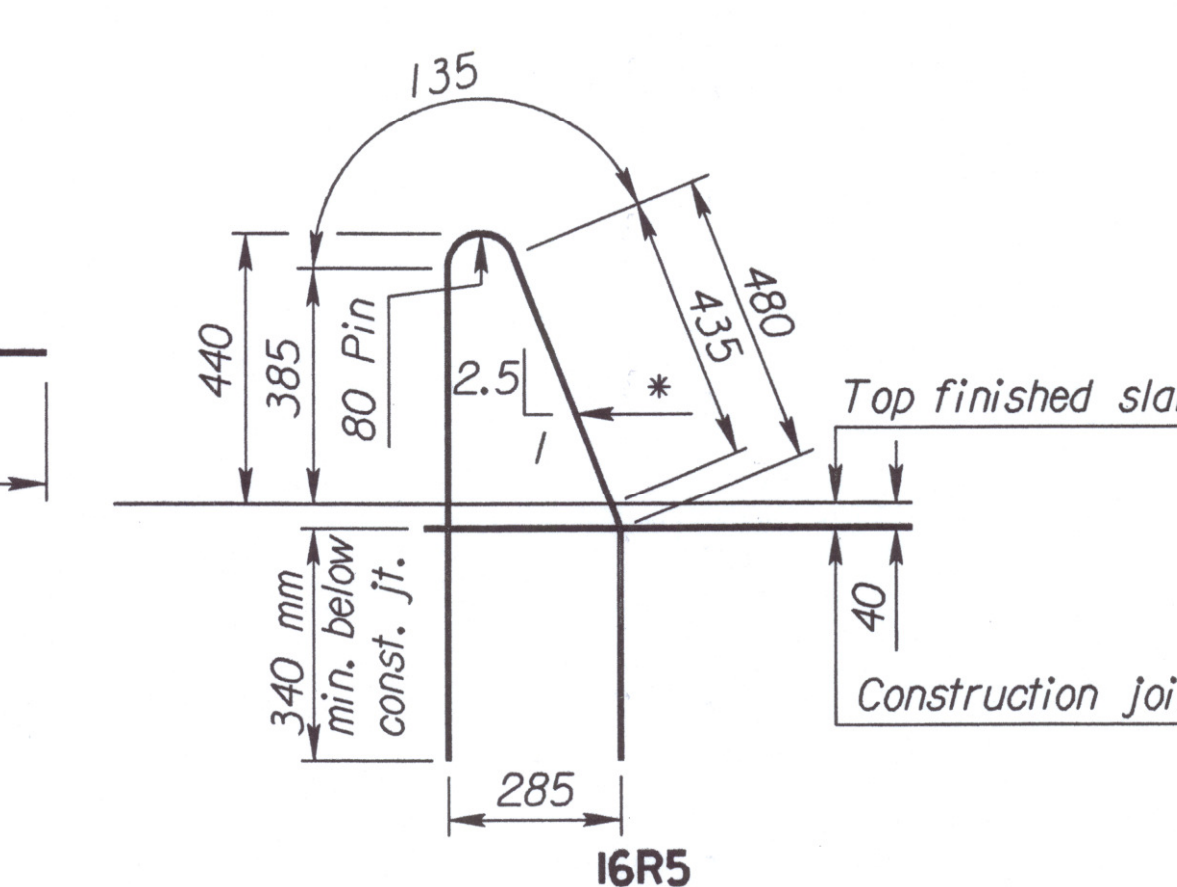
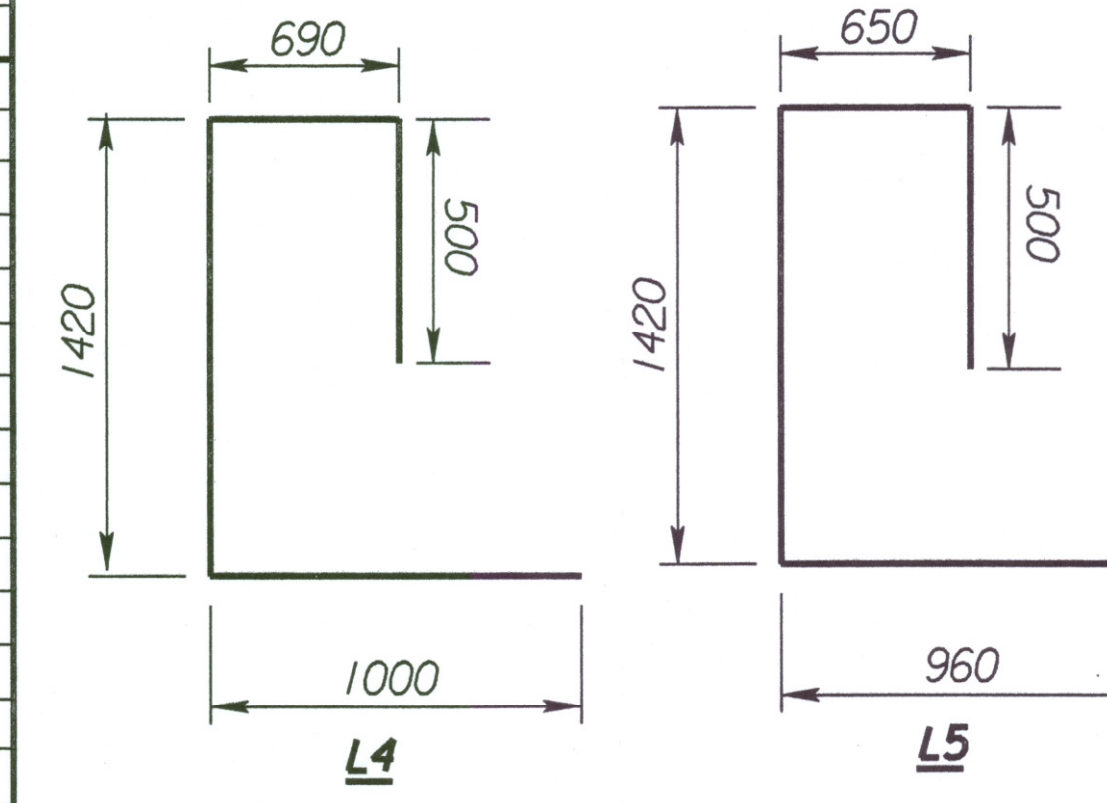
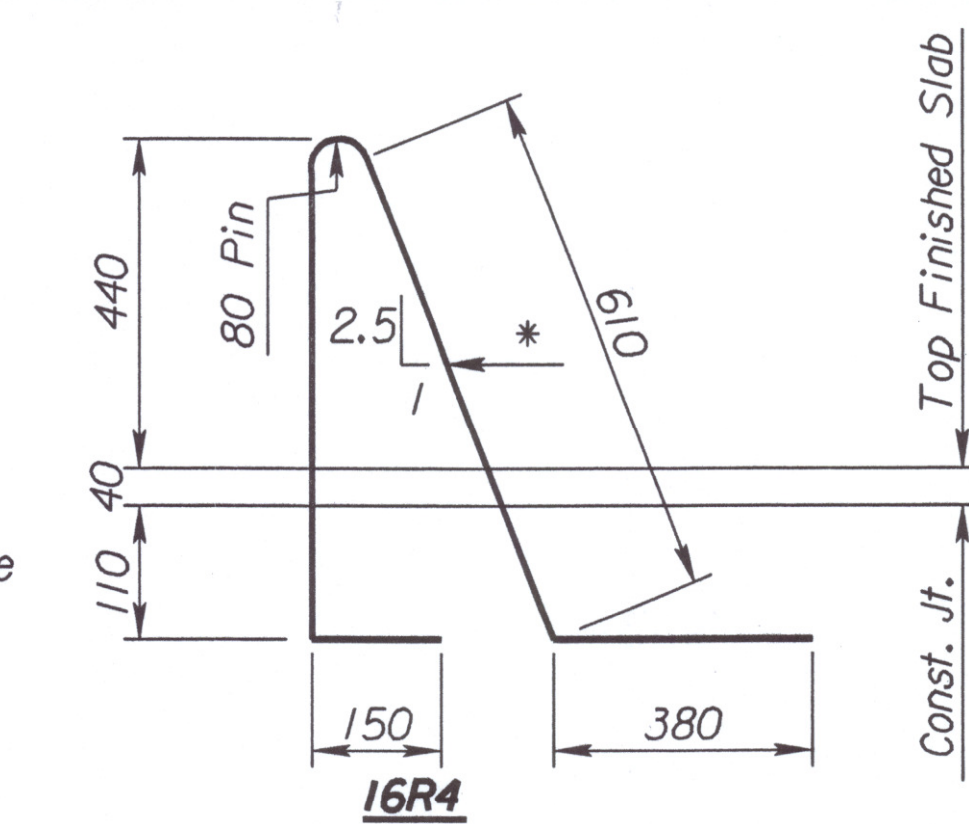
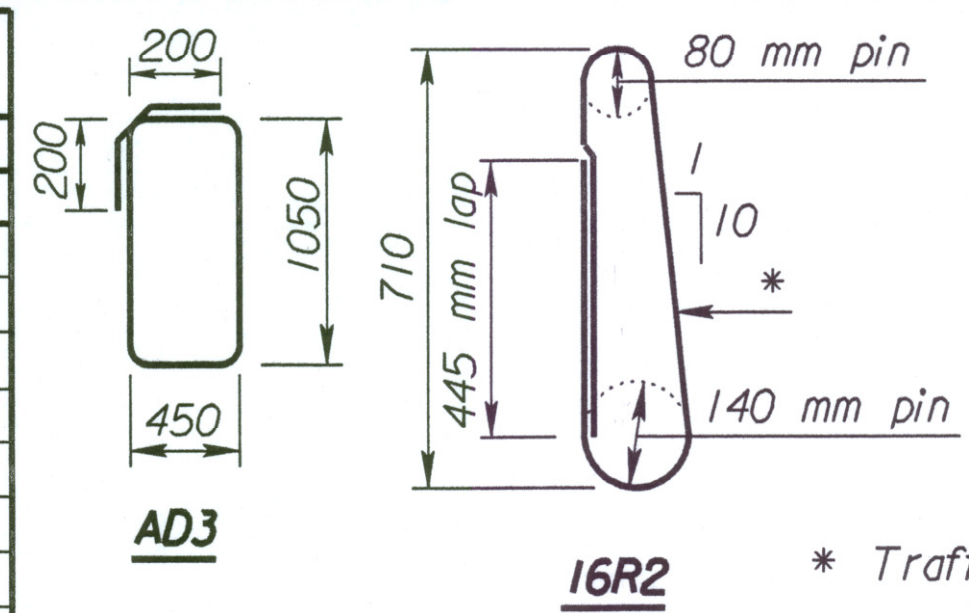
Plotted By : ras
 Plot File : i:\1997\97362\001\bridge\maizerd\reinsf.dgn
 Plot Date : 3-25-02

Std. Base File : i:\usr7\shslab\br60\bsi.dgn
 Server File : i:\usr2\
 Server : witch
 View = PLOT4

STATE	PROJECT NO.	YEAR	SHEET NO.	TOTAL SHEETS
KANSAS	54-87 K-6657-01	2002	473	1122

BILL OF REINFORCING STEEL
Grade 420

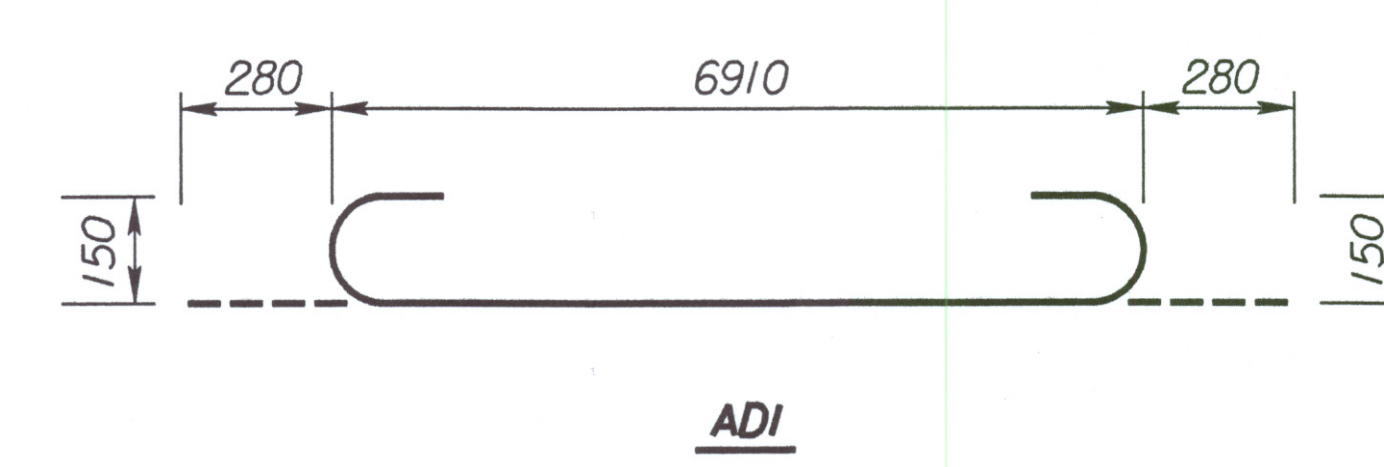
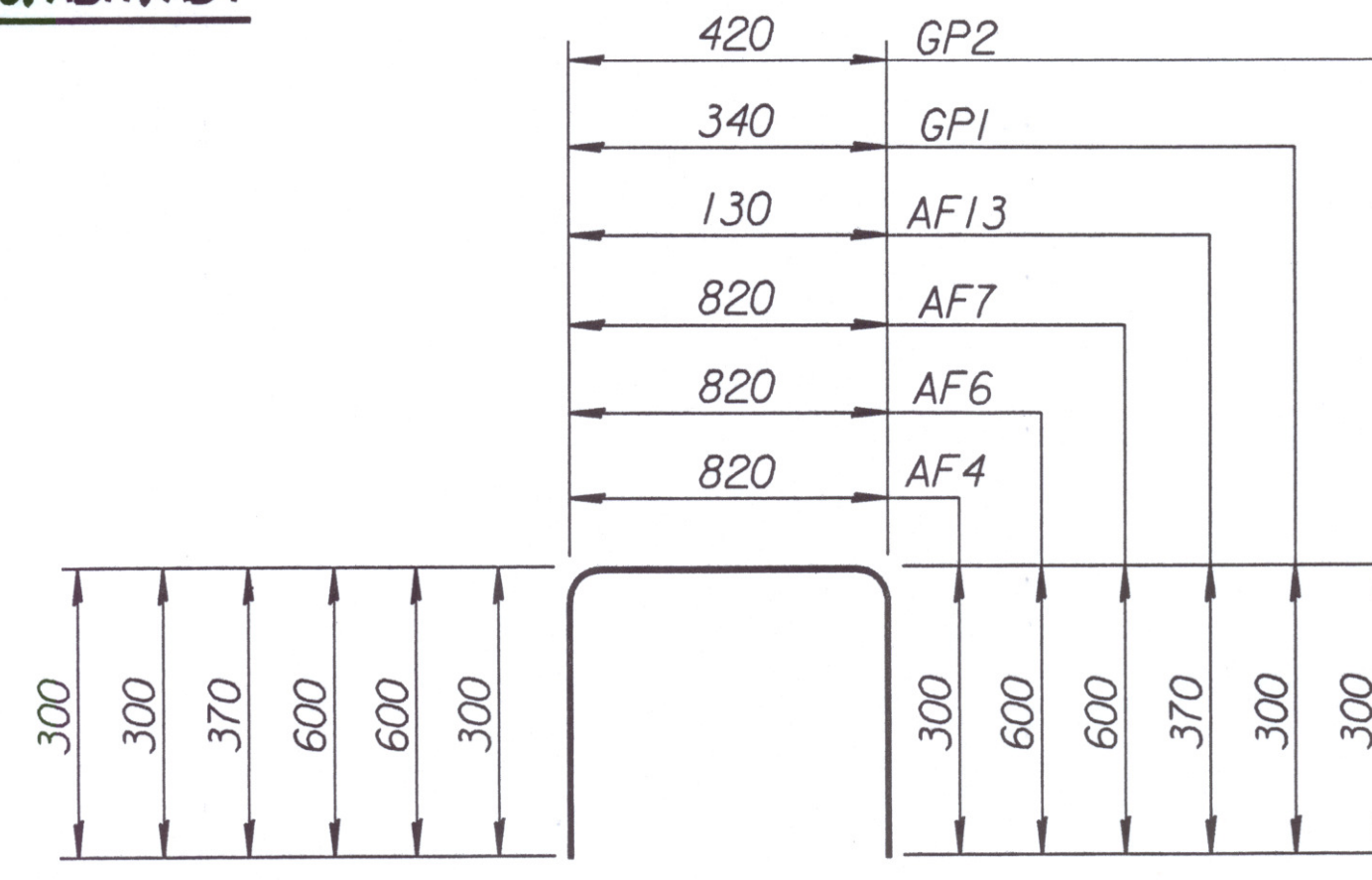
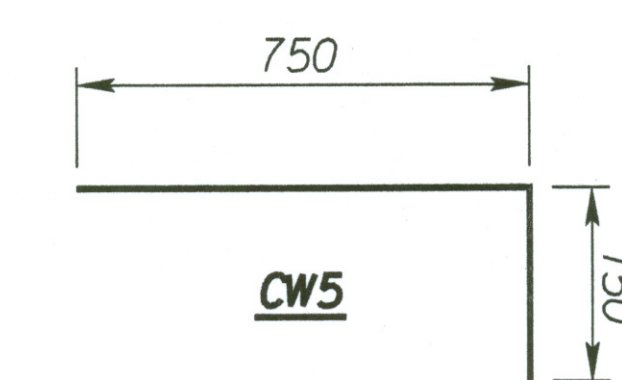
Mark	Straight Bars			Bent Bars			
	Size	Number	Length	Mark	Size	Number	Length
AB1	25	4	17 800	AB4	19	6	Varies
AB2	16	15	Varies	AB5	16	68	3260
AB3	16	15	2900	AB9	19	6	Varies
AB6	19	20	3000	AB10	16	48	3000
AB7	19	20	Varies	AB11	16	52	1920
AB8	19	6	17 800	AB12	13	8	3220
AB13	16	7	1900				
*AB13	16	1	1900				
*AB14	13	8	500				
AF1	25	4	18 200	AF4	13	21	1420
AF2	25	4	18 200	AF5	13	21	2800
AF3	19	38	18 200	AF6	16	64	2020
AF8	16	128	Varies	AF7	16	64	2020
AF10	16	7	6340	AF9	13	150	1730
*AF10	16	1	6340	AD1	25	8	7470
*AF11	13	21	500	AD3	13	16	3400
AD2	19	48	1090	AD4	13	32	850
AF12	13	8	1640	AF13	13	36	870
CW1	16	26	6960	GP1	13	40	940
CW2	16	26	6270	GP2	13	40	1020
CW3	16	23	7420	CW5	16	136	900
CW4	16	21	7420				
CW6	19	1	6960				
CW7	19	1	6270				
CW8	16	4	2000				
CW9	16	8	900				
AB1	25	4	17 800	AB2	16	15	Varies
AB2	16	15	Varies	AB4	19	6	Varies
AB3	16	15	2900	AB5	16	68	3260
AB6	19	20	3000	AB9	19	6	Varies
AB7	19	20	Varies	AB10	16	48	3000
AB8	19	6	17 800	AB11	16	52	1920
AB13	16	7	1900	AB12	13	8	3220
*AB13	16	1	1900				
*AB14	13	8	500				
AF1	25	4	18 200	AF4	13	21	1420
AF2	25	4	18 200	AF5	13	21	2800
AF3	19	38	18 200	AF6	16	64	2020
AF8	16	128	Varies	AF7	16	64	2020
AF10	16	7	6340	AF9	13	150	1730
*AF10	1	1	6340	AD1	25	8	7470
*AF11	13	21	500	AD3	13	16	3400
AD2	19	48	1090	AD4	13	32	850
AF12	13	8	1640	AF13	13	36	870
CW1	16	26	6960	GP1	13	40	940
CW2	16	26	6270	GP2	13	40	1020
CW3	16	23	7420	CW5	16	136	900
CW4	16	21	7420				
CW6	19	1	6960				
CW7	19	1	6270				
CW8	16	4	2000				
CW9	16	8	900				



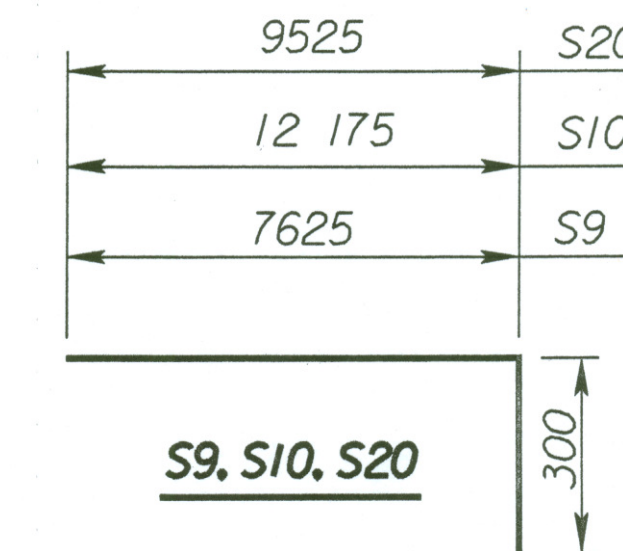
Increase from 1620 mm to 2220 mm by 100 mm increments. Cut 4 per each.

Increase from 5800 mm to 6115 mm by 5 mm increments. Cut 2 per each.

Superstructure (Epoxy)											
Diaphragm, Slab and Rails											
S1	16	62	9900								
S2	16	62	5350								
S3	16	62	18 300								
S4	16	62	18 300	L3	13	12	2150				
S5	16	62	18 300	L4	16	4	3610				
S6	16	62	18 300	L5	16	4	3530				
S7	16	62	14 075								
S8	16	31	18 300								
S11	16	62	18 300	S9	16	62	7925				
S12	16	60	9200	S10	16	60	12 475				
S13	16	60	18 300	S20	16	120	9825				
S14	19	120	18 300								
S15	16	62	18 300								
S16	16	60	11 225								
S17	16	62	9175								
S18	16	30	11 000								
S19	16	31	6000								
R7	19	24	5350								
R8	19	192	5900	RI	13	434	1560				
R9	13	60	11 125	R2	16	868	1980				
T1	16	500	17 800	R4	16	844	1795				
T2	16	618	17 800	R5	16	24	1740				



Increase from 2330 mm to 2910 mm by 145 mm increments. Cut 3 per each.



* Nonpay

AF4, AF6, AF7, AF13, GP1, GP2

BENDING DIAGRAMS
 (All dimensions are out to out of bars.)

AB2

2					
1					
NO.	DATE	REVISIONS	BY	APP'D	
CITY OF WICHITA Br. No. 54-87-19.05(489) W.B. Sta. 15+612.397 BILL OF REINFORCING STEEL AND BENDING DIAGRAMS Sedgwick County					
SHEET NO.	OF	SCALE	APP'D		
DESIGNED	DRT	DETAILED	DRT	QUANTITIES	CADD
DESIGN CK.	SMS	DETAIL CK.	QUAN. CK.	CADD CK.	GFK