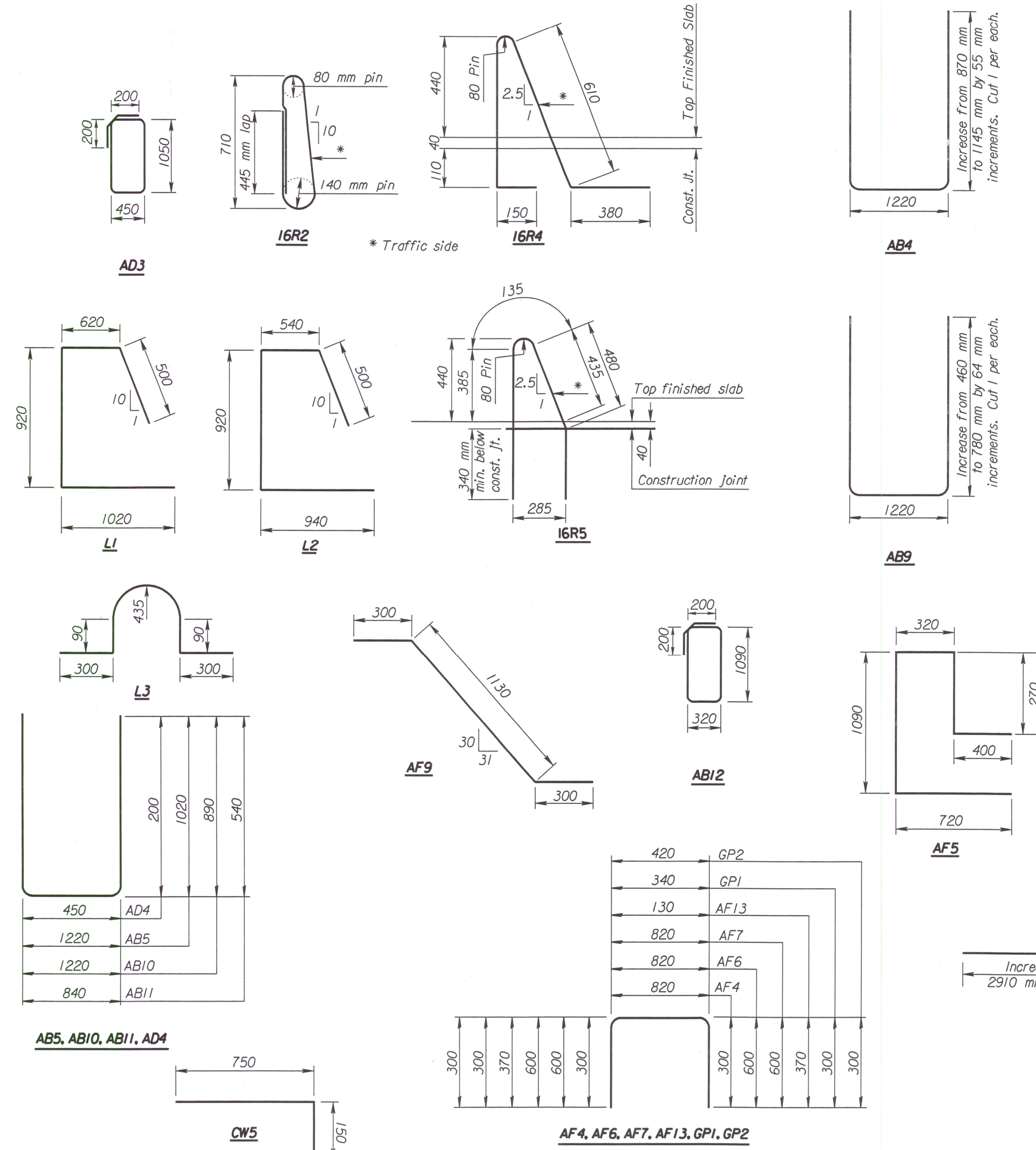


STATE	PROJECT NO.	YEAR	SHEET NO.	TOTAL SHEETS
KANSAS	54-87 K-6657-01	2002	475	1122

**BILL OF REINFORCING STEEL  
Grade 420**

	Straight Bars				Bent Bars			
	Mark	Size	Number	Length	Mark	Size	Number	Length
<b>Superstructure</b>	AB1	25	4	17 800	AB4	19	6	Varies
	AB2	16	15	Varies	AB5	16	68	3260
	AB3	16	15	2900	AB9	19	6	Varies
	AB6	19	20	3000	AB10	16	48	3000
	AB7	19	20	Varies	AB11	16	52	1920
	AB8	19	6	17 800	AB12	13	8	3220
	AB13	16	7	1950				
	*AB13	16	1	1950				
	*AB14	13	8	500				
	<b>Substructure</b>	AF1	25	4	18 200	AF4	13	23
AF2		25	4	18 200	AF5	13	23	2800
AF3		19	42	18 200	AF6	16	64	2020
AF8		16	128	Varies	AF7	16	64	2020
AF10		16	7	6970	AF9	13	180	1730
*AF10		16	1	6970	AD1	25	8	7470
AD2		19	48	1100	AD3	13	16	3400
*AF11		13	23	500	AD4	13	32	850
AF12		13	8	1640	AF13	13	36	870
CW1		16	26	6960	GP1	13	40	940
CW2	16	26	6270	GP2	13	40	1020	
CW3	16	23	8000	CW5	16	136	900	
CW4	16	21	8000					
CW6	19	1	6960					
CW7	19	1	6270					
CW8	16	4	2000					
CW9	16	8	900					
<b>Superstructure</b>	AB1	25	4	17 800	AB4	19	6	Varies
	AB2	16	15	Varies	AB5	16	68	3260
	AB3	16	15	2900	AB9	19	6	Varies
	AB6	19	20	3000	AB10	16	48	3000
	AB7	19	20	Varies	AB11	16	52	1920
	AB8	19	6	17 800	AB12	13	8	3220
	AB13	16	7	1950				
	*AB13	16	1	1950				
	*AB14	13	8	500				
	<b>Substructure</b>	AF1	25	4	18 200	AF4	13	23
AF2		25	4	18 200	AF5	13	23	2800
AF3		19	42	18 200	AF6	16	64	2020
AF8		16	128	Varies	AF7	16	64	2020
AF10		16	7	6970	AF9	13	180	1730
*AF10		16	1	6970	AD1	25	8	7470
AD2		19	48	1100	AD3	13	16	3400
*AF11		13	23	500	AD4	13	32	850
AF12		13	8	1640	AF13	13	36	870
CW1		16	26	6960	GP1	13	40	940
CW2	16	26	6270	GP2	13	40	1020	
CW3	16	23	8000	CW5	16	136	900	
CW4	16	21	8000					
CW6	19	1	6960					
CW7	19	1	6270					
CW8	16	4	2000					
CW9	16	8	900					



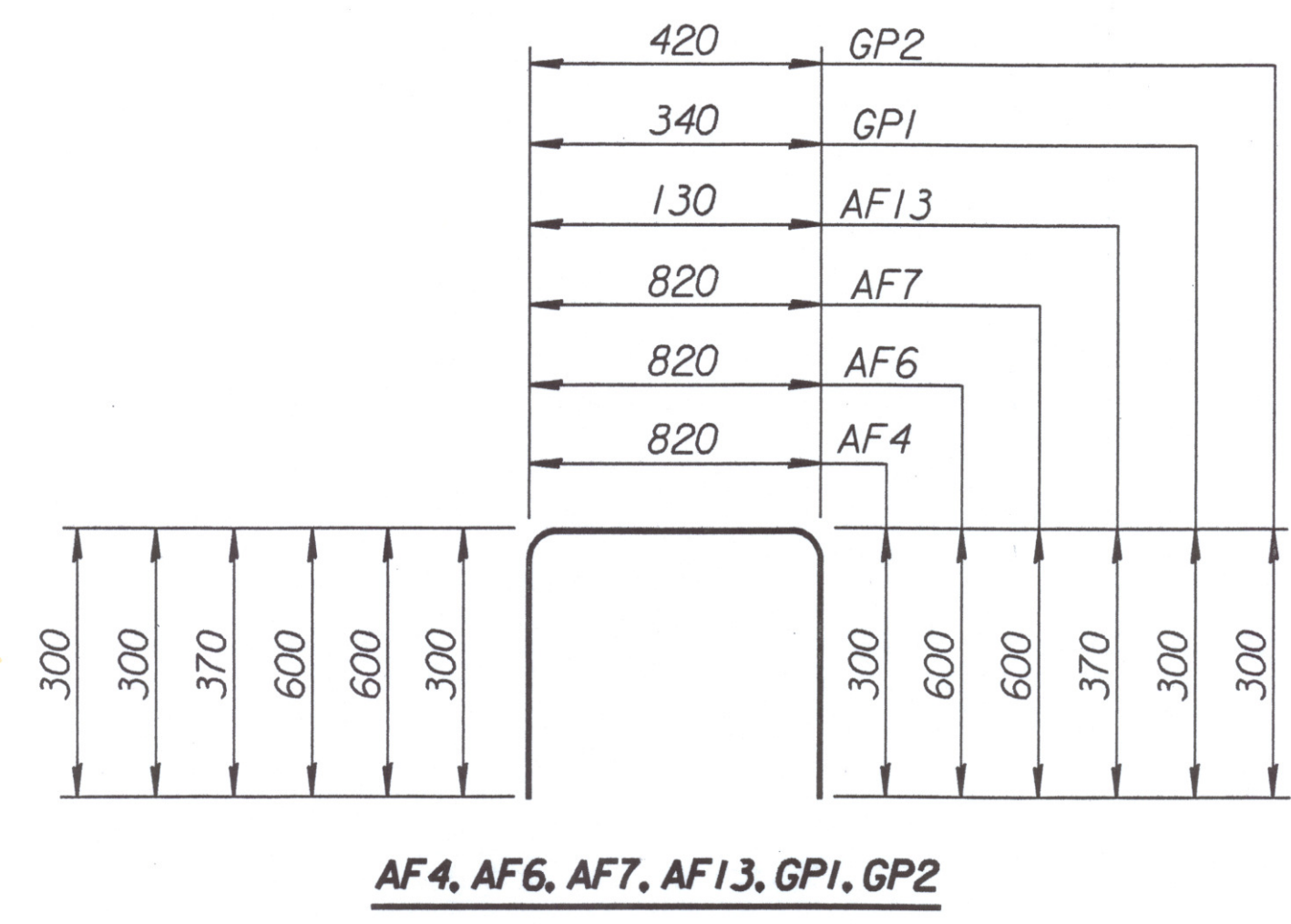
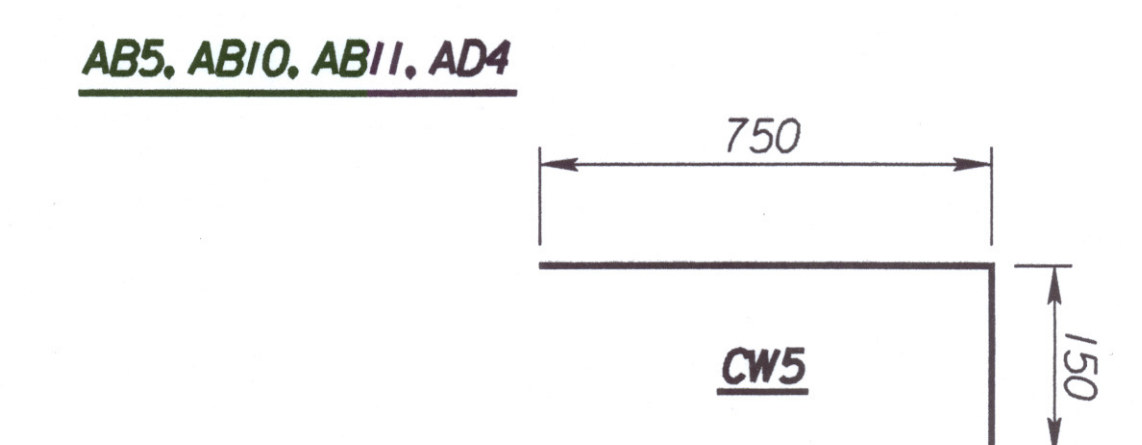
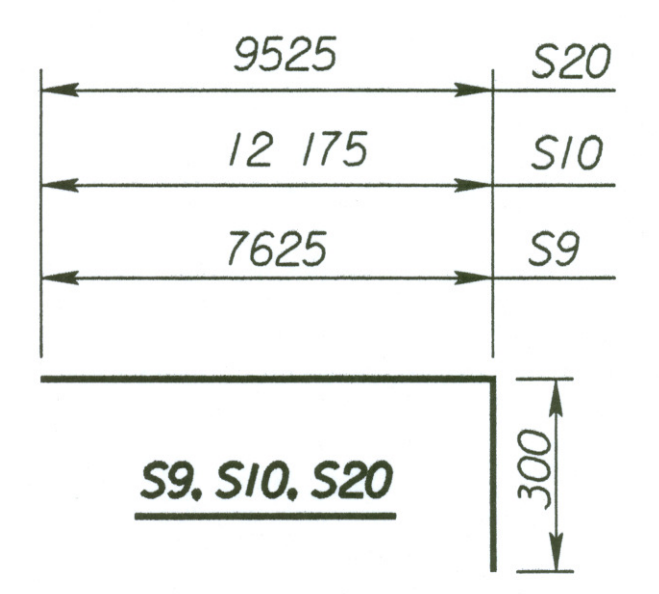
Increase from 1620 mm to 2220 mm by 100 mm increments. Cut 4 per each.

Increase from 6105 mm to 6420 mm by 5 mm increments. Cut 2 per each.

Increase from 460 mm to 780 mm by 64 mm increments. Cut 1 per each.

Increase from 2330 mm to 2910 mm by 145 mm increments. Cut 3 per each.

Superstructure (Epoxy)				Diaphragm, Slab and Rails			
S1	16	62	9900	L1	16	4	3060
S2	16	62	5350	L2	16	4	2900
S3	16	62	18 300	L3	13	8	2150
S4	16	62	18 300				
S5	16	62	18 300				
S6	16	62	18 300				
S7	16	62	14 075				
S8	16	31	18 300				
S11	16	62	18 300	S9	16	62	7925
S12	16	60	9200	S10	16	60	12 475
S13	16	60	18 300	S20	16	120	9825
S14	19	120	18 300				
S15	16	62	18 300				
S16	16	60	11 225				
S17	16	62	9175				
S18	16	30	11 000				
S19	16	31	6000				
R7	19	16	5350				
R8	19	128	5900				
R9	13	60	11 125	R2	16	868	1980
T1	16	500	17 800	R4	16	844	1795
T2	16	618	17 800	R5	16	24	1740



**BENDING DIAGRAMS**  
(All dimensions are out to out of bars.)

Plotted By : ros  
Plot File : i:\1997\97362\001\bridge\maizerd\reinstl.dgn  
Plot Date : 3-25-02

2					
1					
NO.	DATE	REVISIONS	BY	APP'D	

CITY OF WICHITA  
Br. No. 54-87-19.06(49) E.B. Sta. 15+612.397  
**BILL OF REINFORCING STEEL  
AND  
BENDING DIAGRAMS**  
Sedgwick County

SHEET NO.	OF	SCALE	APP'D
DESIGNED	DRT	DETAILED	DRT
QUANTITIES	CADD	GFK	
DESIGN CK.	SMS	DETAIL CK.	QUAN. CK.