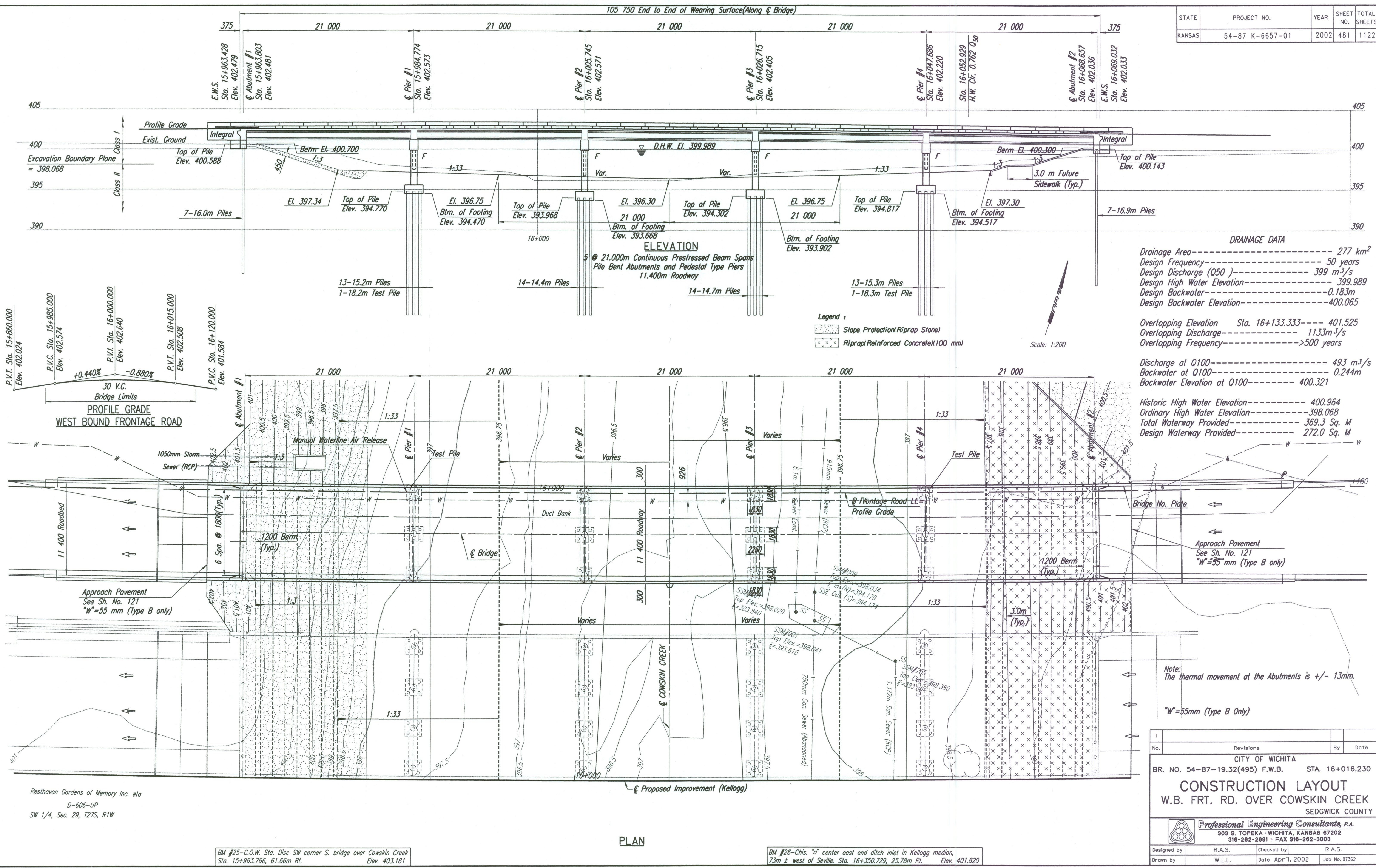


STATE	PROJECT NO.	YEAR	SHEET NO.	TOTAL SHEETS
KANSAS	54-87 K-6657-01	2002	481	1122



DRAINAGE DATA

Drainage Area	-----	277 km ²
Design Frequency	-----	50 years
Design Discharge (Q50)	-----	399 m ³ /s
Design High Water Elevation	-----	399.989
Design Backwater	-----	0.183m
Design Backwater Elevation	-----	400.065
Overlapping Elevation	Sta. 16+133.333	401.525
Overlapping Discharge	-----	1133m ³ /s
Overlapping Frequency	-----	>500 years
Discharge at Q100	-----	493 m ³ /s
Backwater at Q100	-----	0.244m
Backwater Elevation at Q100	-----	400.321
Historic High Water Elevation	-----	400.964
Ordinary High Water Elevation	-----	398.068
Total Waterway Provided	-----	369.3 Sq. M
Design Waterway Provided	-----	272.0 Sq. M

Note:
The thermal movement at the Abutments is +/- 13mm.

"W"=55mm (Type B Only)

No.	Revisions	By	Date
CITY OF WICHITA			
BR. NO. 54-87-19.32(495) F.W.B.		STA. 16+016.230	
CONSTRUCTION LAYOUT			
W.B. FRT. RD. OVER COWSKIN CREEK			
SEDGWICK COUNTY			
Professional Engineering Consultants, P.A.			
303 S. TOPEKA - WICHITA, KANSAS 67202			
316-262-2691 • FAX 316-262-3003			
Designed by	R.A.S.	Checked by	R.A.S.
Drawn by	W.L.L.	Date	April, 2002
		Job No.	97362

DSNR: RAS OPER: BJS SCALE: 1:200
 I:/1997/97362/001/BRIDGE/COWSKIN/WESTBOUND/LAYOUT.DGN LAST REV: 3-20-2002 BY: svb

Resthaven Gardens of Memory Inc. et al
 D-606-UP
 SW 1/4, Sec. 29, T27S, R1W

BM #25-C.O.W. Std. Disc SW corner S. bridge over Cowskin Creek
 Sta. 15+963.766, 61.66m Rt. Elev. 403.181

BM #26-Chis. "d" center east end ditch inlet in Kellogg median,
 73m ± west of Seville. Sta. 16+350.729, 25.78m Rt. Elev. 401.820

PLAN