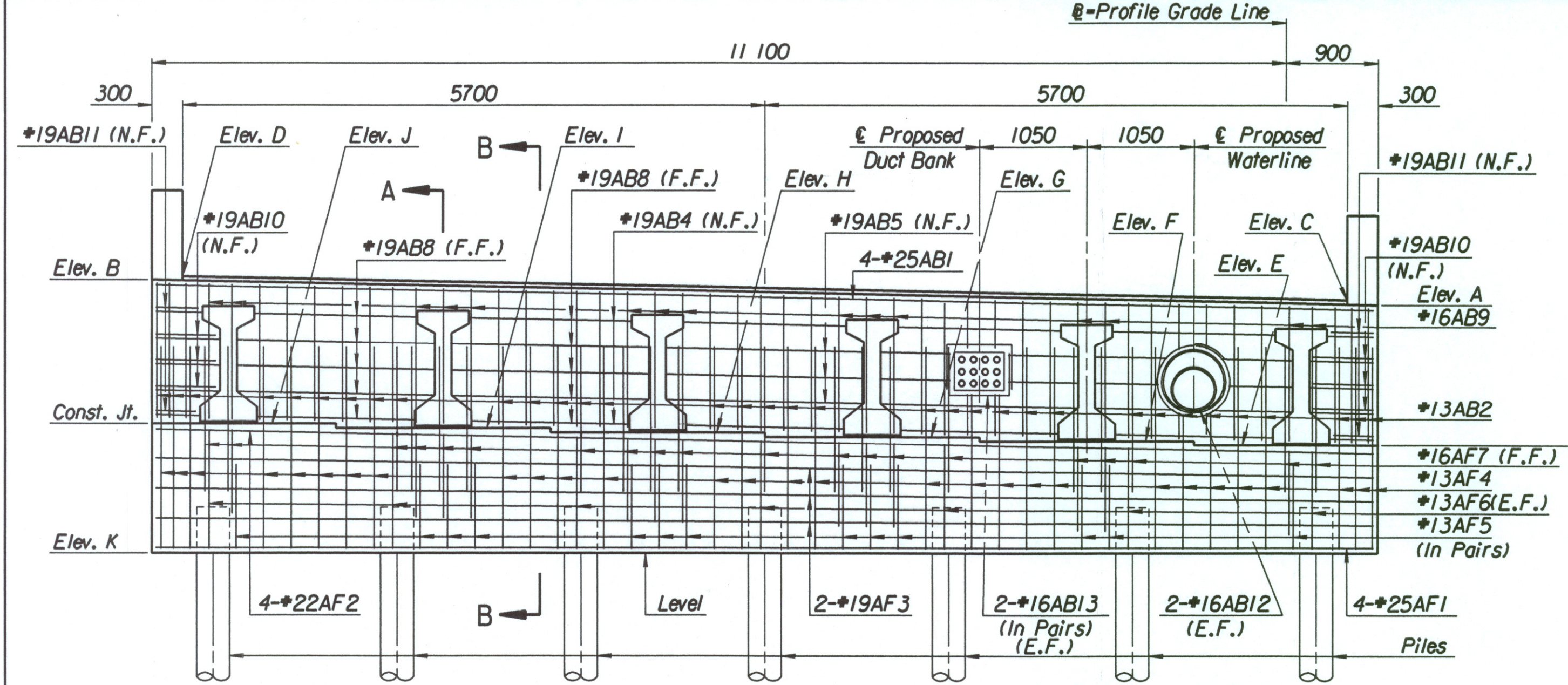
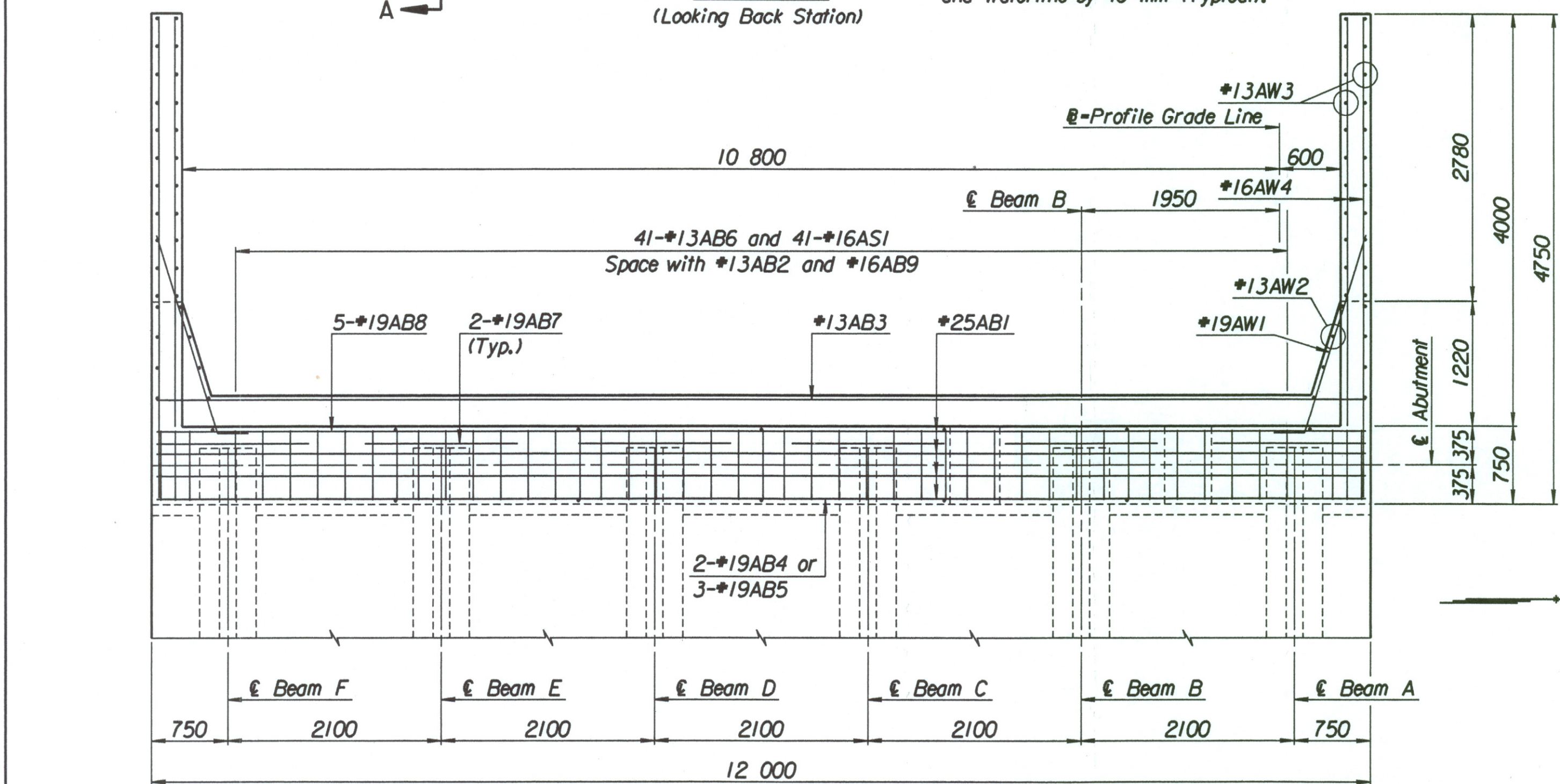


Note: Proposed DI CL RJ Pipe & Pipe Elev.=401.598
 & 610 mm dia. PVC Elev. = 401.682
 Proposed 375 x 490 mm Duct Bank
 Center Elev.=401.766

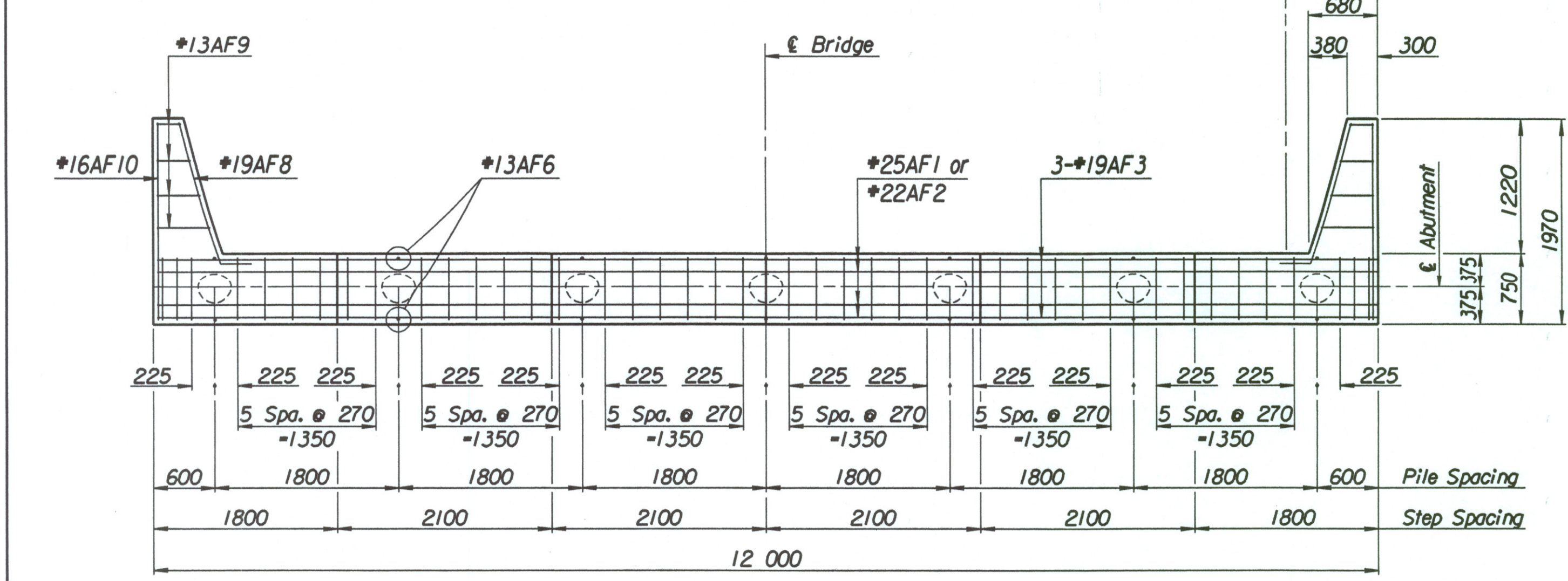
Note: 610 mm PVC shall be 2" DSR35 as manufactured
 by CertainTeed or approved equal.



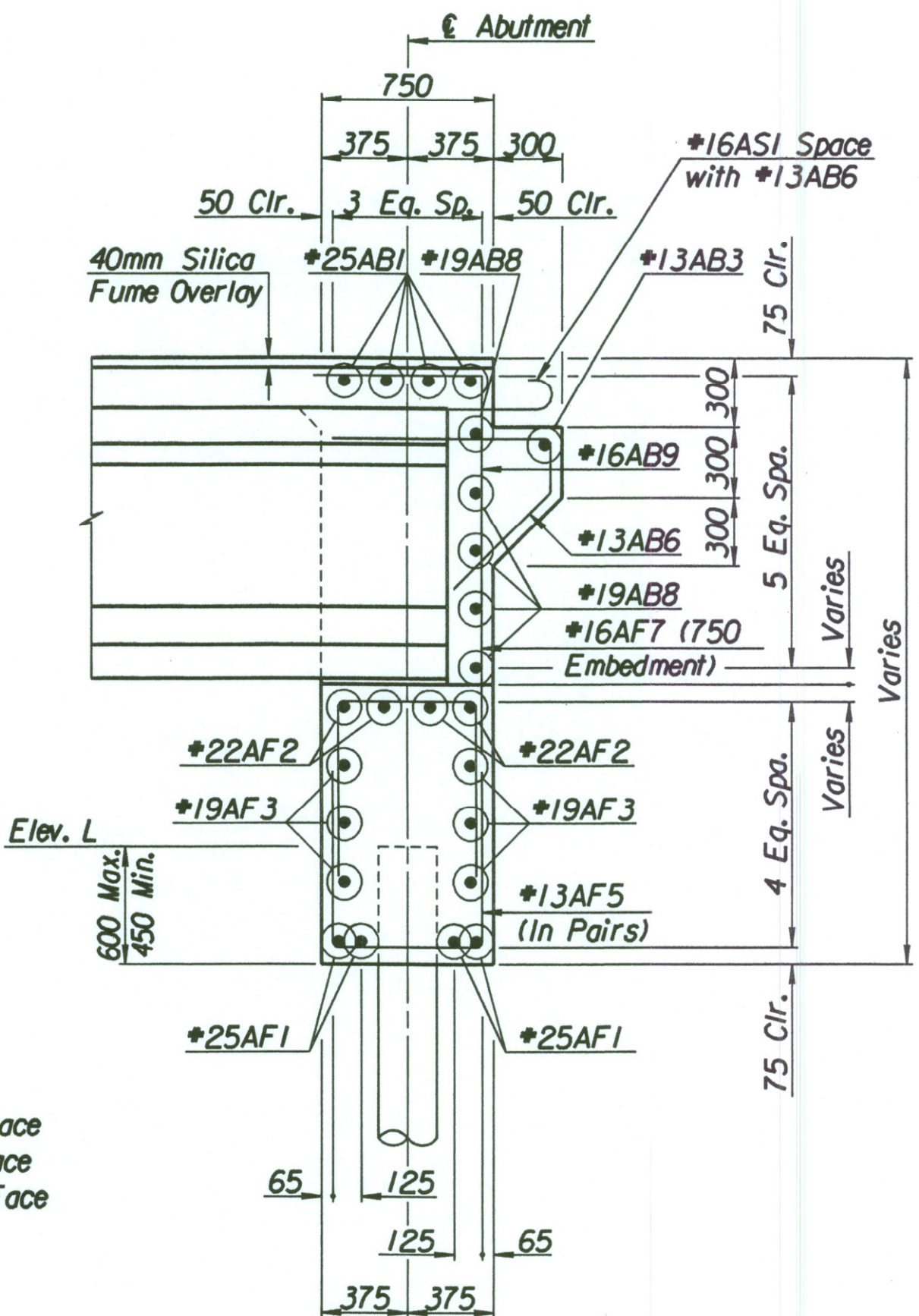
ELEVATION (Looking Back Station)
 Note: Reinforcing Steel to clear Duct Bank and Waterline by 40 mm (Typical).



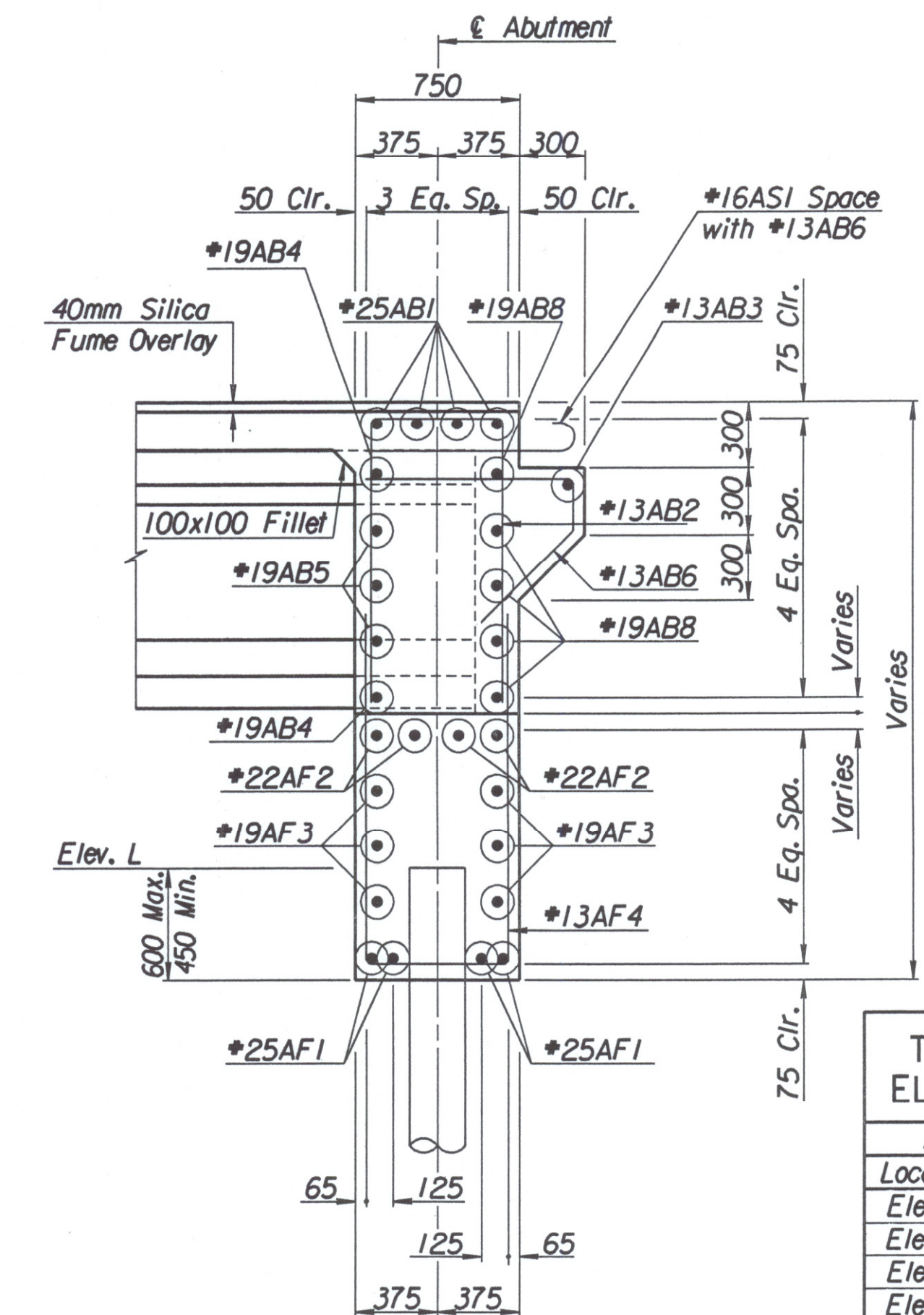
PLAN



FOOTING PLAN

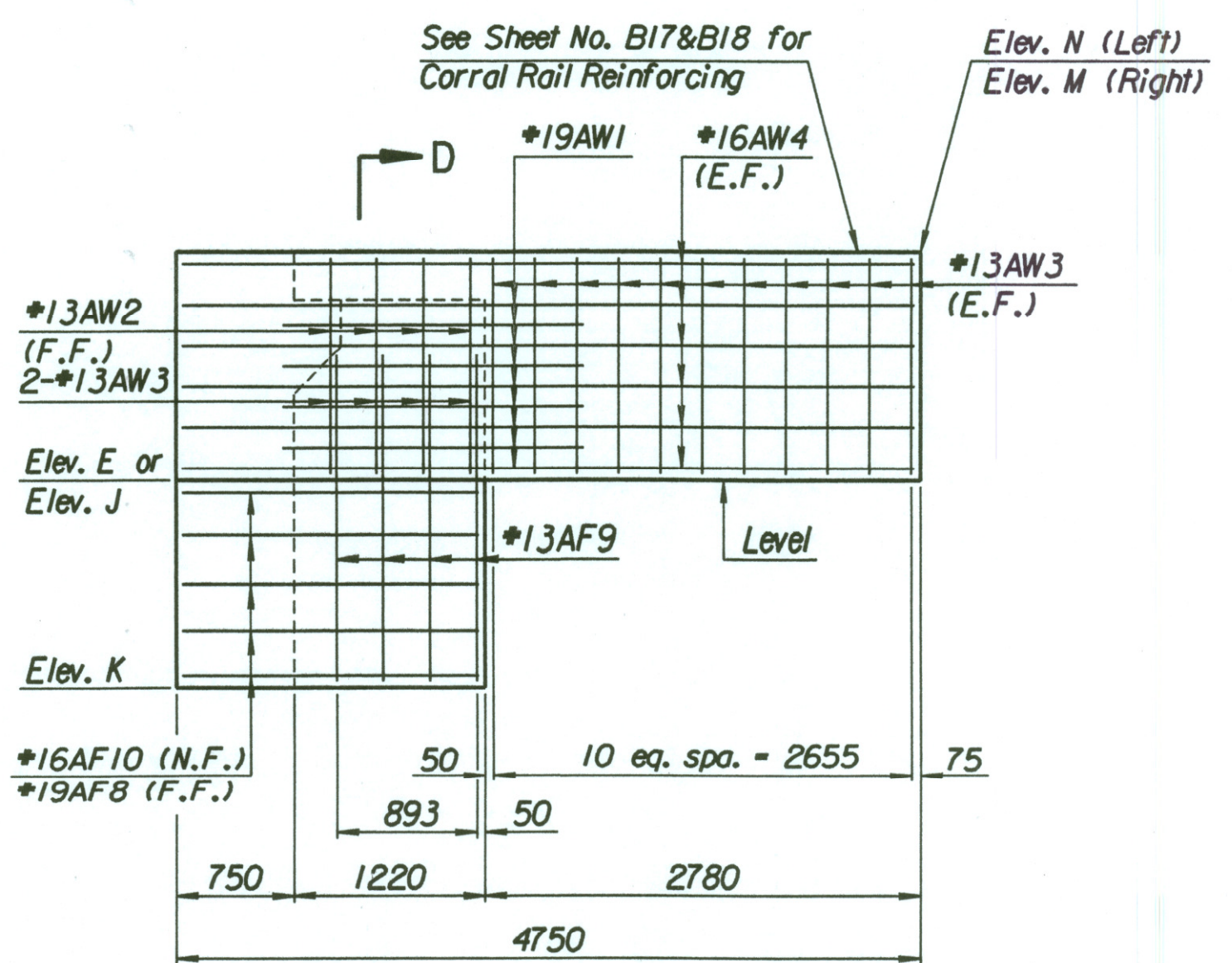


SECTION A-A (See Framing Plan for Beam Embedment)

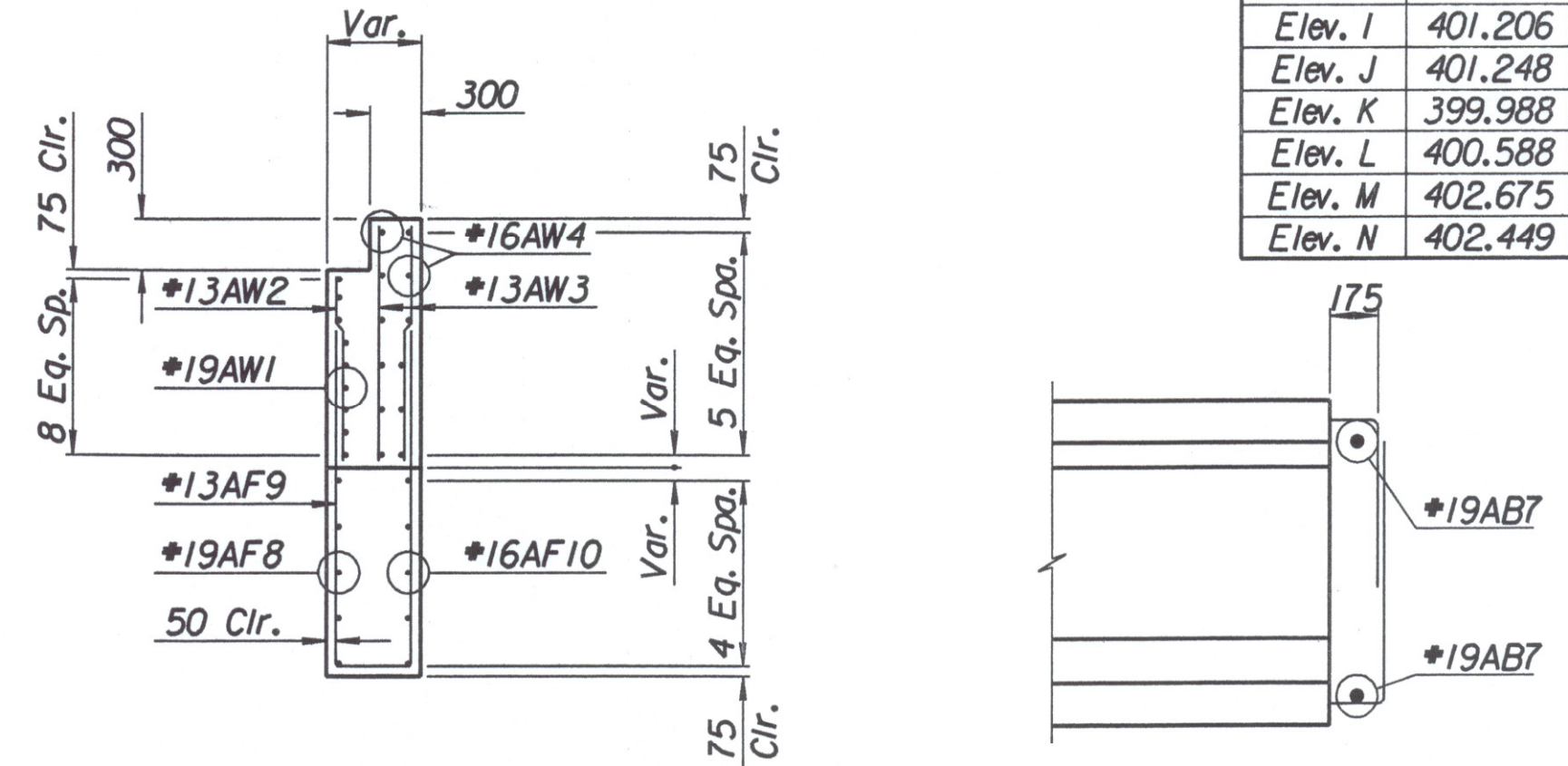


SECTION B-B

LEGEND:
 N.F. = Near Face
 F.F. = Far Face
 E.F. = Each Face



VIEW C-C



SECTION D-D

K3 BEAM END ELEVATION

TABLE OF ELEVATIONS	
Abutment #1	
Location	Elevation
Elev. A	402.423
Elev. B	402.663
Elev. C	402.469
Elev. D	402.697
Elev. E	401.038
Elev. F	401.080
Elev. G	401.122
Elev. H	401.164
Elev. I	401.206
Elev. J	401.248
Elev. K	399.988
Elev. L	400.588
Elev. M	402.675
Elev. N	402.449

Abutment Pile Loadings (kN)		
Group I Loading	Actual	Allowable
	432	440

No.	Revisions	By	Date
CITY OF WICHITA BR. NO. 54-87-19.32 (495) F.W.B. STA. 16+016.230 WEST KELLOGG WESTBOUND FRONTAGE ROAD OVER COWSKIN CREEK ABUTMENT NO. I DETAILS SEDGWICK COUNTY			
Professional Engineering Consultants, P.A. 303 S. TOPEKA - WICHITA, KANSAS 67202 316-262-2691 • FAX 316-262-3003			
Designed by	M.D.G.	Checked by	R.A.S.
Drawn by	W.L.L.	Date	April, 2002
		Job No.	97362

Drawn By: will
 Plotted By: ras 4-11-2002
 I:/1997/97362/001/bridge/cowskin/WESTBOUND/abutmentwbrt.dgn