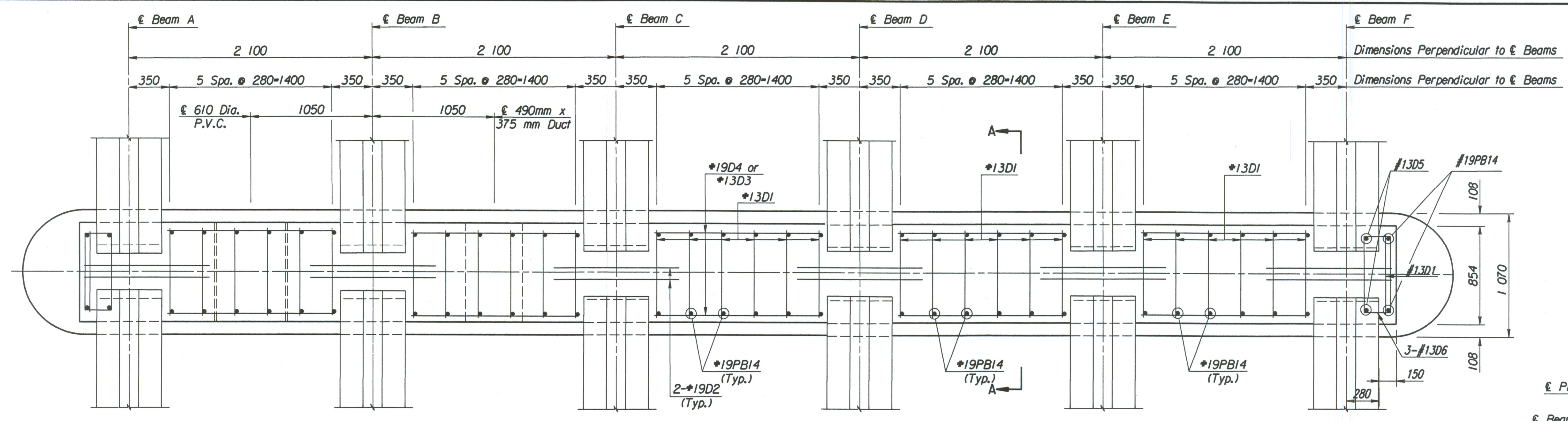


STATE	PROJECT NO.	YEAR	SHEET NO.	TOTAL SHEETS
KANSAS	54-87 K-6657-01	2002	490	1122



PLAN SECTION THRU PIER DIAPHRAGM

Note: Proposed DI CL RJ Pipe

€ Pipe Elev. @ Pier No. 1	Pier No. 2	Pier No. 3	Pier No. 4
401.713	401.688	401.522	401.337

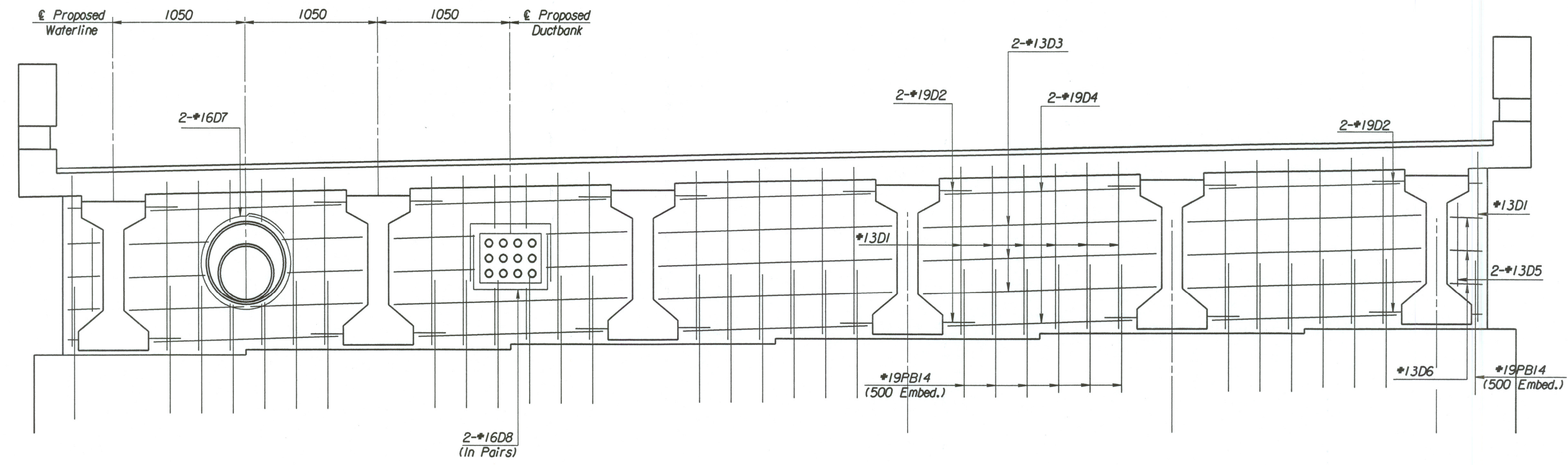
€ 610 mm dia. PVC Elev. @ Pier No. 1 Pier No. 2 Pier No. 3 Pier No. 4

401.774	401.772	401.606	401.421
---------	---------	---------	---------

Proposed 490 x 375 mm Duct Bank

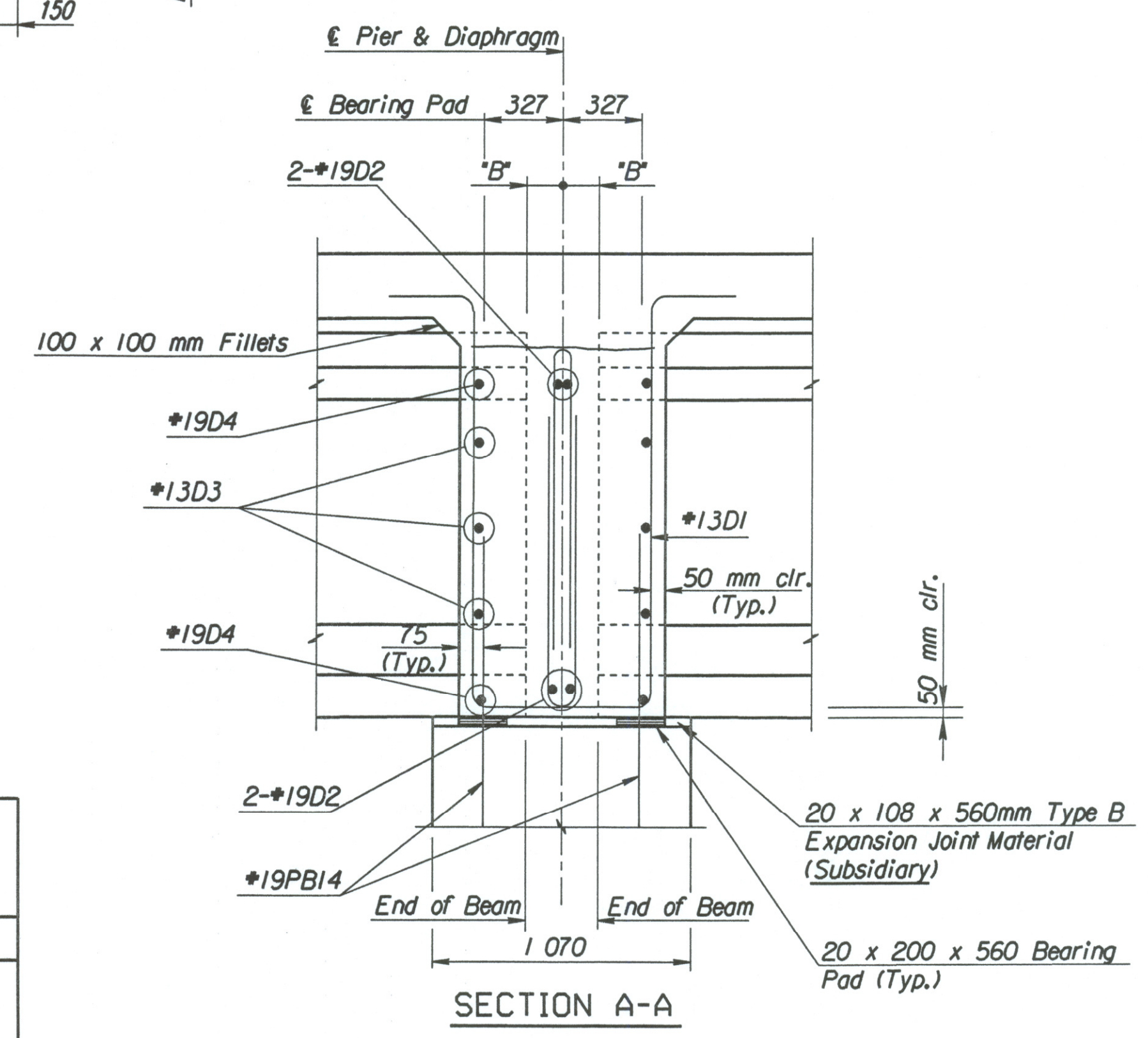
Center Elev. @ Pier No. 1	Pier No. 2	Pier No. 3	Pier No. 4
401.858	401.856	401.690	401.505

Note: 610 mm PVC shall be 24" DSR35 as manufactured by Certainteed or approved equal.



SECTION

Note: Reinforcing Steel to clear Ductbank and Waterline by 40 mm (Typical).



SECTION A-A

See Framing Plan for "B" dimensions

DSNR: RAS OPER: gdr SCALE: 1:20 I:/1997/97362/001/BRIDGE/COMSKIN/westbound/diaphrmb.dgn 3-15-2002

No.		Revisions	By	Date
CITY OF WICHITA				
BR. NO. 54-87-19.32(495) F.W.B.			STA. 16+016.230	
DIAPHRAGM DETAILS W.B. FRONTAGE ROAD OVER COWSKIN CREEK				
SEDGWICK COUNTY				
Professional Engineering Consultants, P.A.				
303 S. TOPEKA • WICHITA, KANSAS 67202 316-262-2691 • FAX 316-262-3003				
Designed by	RAS	Checked by	MDG	
Drawn by	BJS	Date	Apr 11, 2002	Job No. 97362