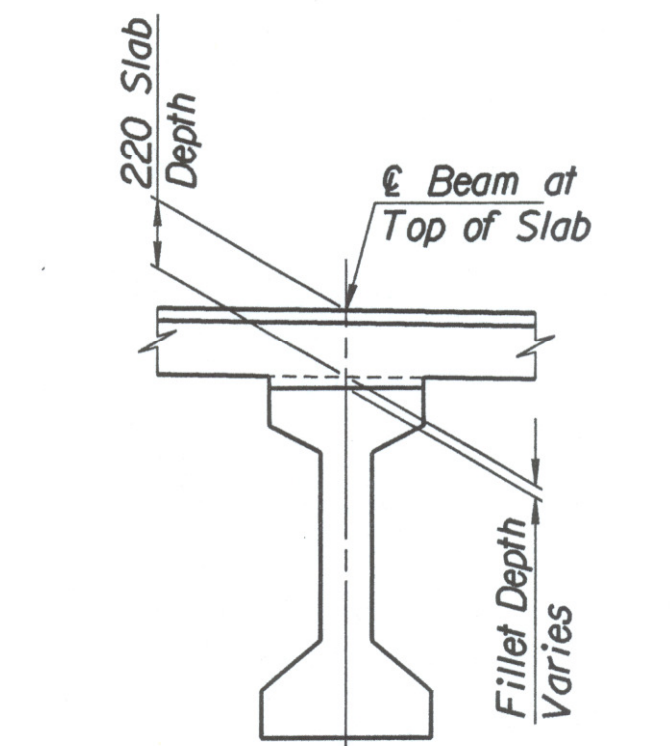


\* 750mm minimum lap

≠ 750mm minimum lap

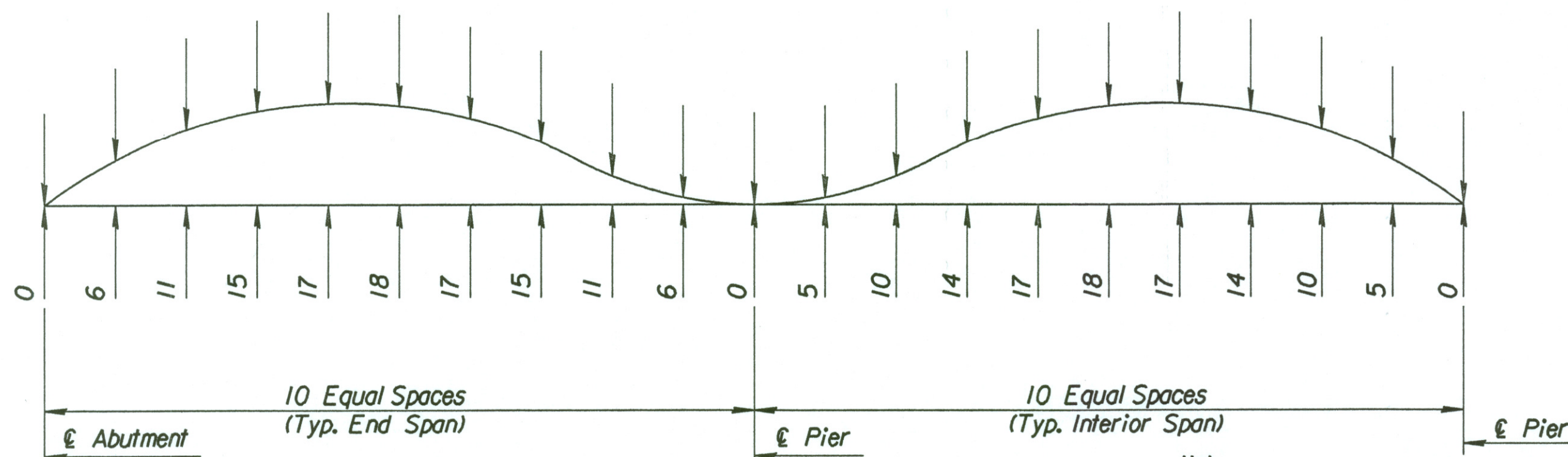
**HALF PLAN**

See Section for Spacing on Framing Plan Sheet.



**CONCRETE FILLET DETAIL**

Note:  
T1 and T2 bars placed parallel to E. Abutments and Piers.



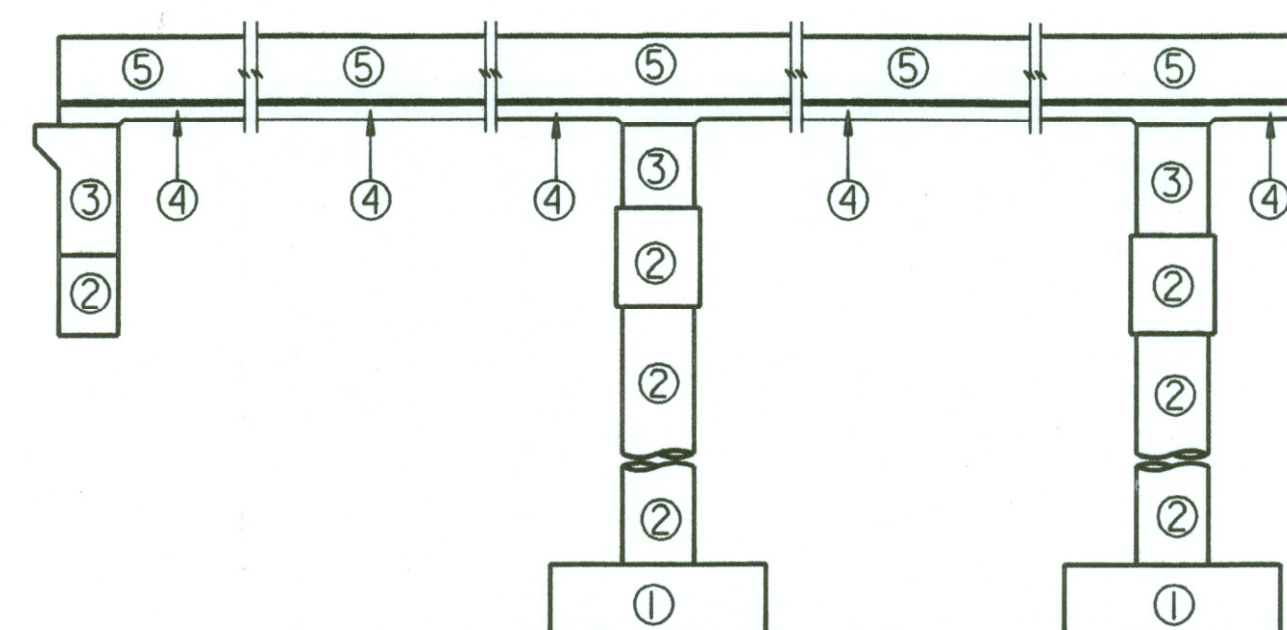
**DEAD LOAD CAMBER DIAGRAM AT TENTH POINTS**

Note:  
Dead Load Deflections are downward.

**CAMBER:** Construct the finished deck to plan grade by varying the depth of the fillet over the beam to provide for prestress camber, concrete dead load deflection and, if necessary, vertical curvature. After the prestressed beams are erected measure the camber in the field by taking a profile of each beam. Correct any variation between the actual camber and concrete dead load deflection shown in the plans by varying the depth of the concrete fillets over the beam so that the finished floor is constructed to the theoretical grade. The minimum depth of the slab over the beam shall be 230 mm. The theoretical amount of concrete required for the fillets is 14.5 m<sup>3</sup>. This amount of concrete is included in the summary of quantities. Any additional concrete required to construct the fillets will be Subsidiary.

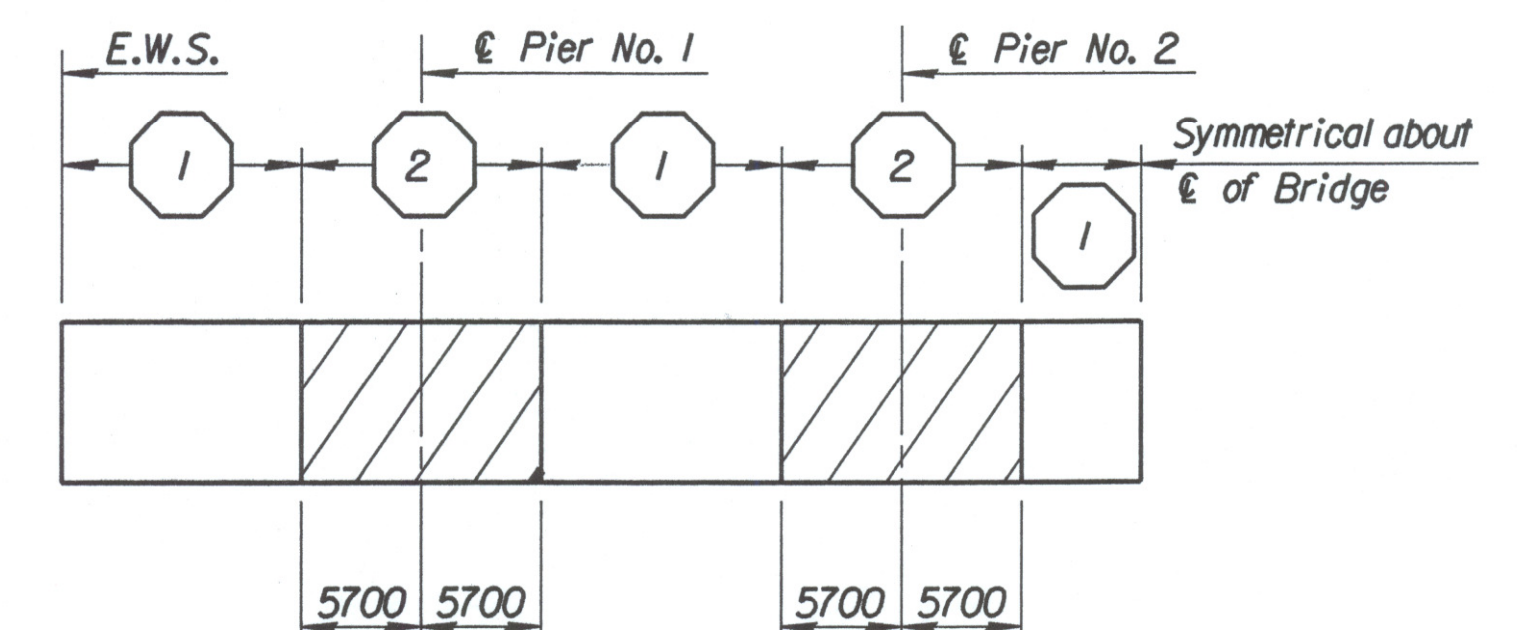
Note:  
Beam Camber at Release:  
Span #1 and #5 28mm  
Span #2, #3 and #4 25mm

Beam Camber at 50 days  
Span #1 and #5 49mm  
Span #2, #3 and #4 44mm



**CONCRETE PLACING SEQUENCE**

- ① Substructure (Footings) - Concrete (Grade 30(AE)).
- ② Substructure - Concrete (Grade 30(AE)).
- ③ Superstructure - Concrete (Grade 30(AE)(SA), Abutment and Pier Diaphragms above the Bridge Seats shall be placed and hand vibrated to the bottom of deck elevation just prior to the normal Paving Train Operations for, ④, the work shall be accomplished in a manner to avoid cold joints in either the Slab or in the Diaphragms. See Slab Concrete Placing Sequence for placing sequence of the Deck Slab.
- ⑤ Superstructure - Concrete (Grade 30(AE)(SA) Curbs.



**CONCRETE PLACING SEQUENCE**

Revisions		By	Date
No.			
CITY OF WICHITA			
BR. NO. 54-87-19.32 (495) F.W.B.		STA. 16+016.230	
<b>SUPERSTRUCTURE DETAILS</b>			
W.B. FRT. RD. OVER COWSKIN CREEK			
SEDGWICK COUNTY			
Professional Engineering Consultants, P.A.			
303 S. TOPEKA • WICHITA, KANSAS 67202 316-262-2691 • FAX 316-262-3003			
Designed by	RAS	Checked by	RAS
Drawn by	BJS	Date	April, 2002
		Job No.	97362

Drawn by: b1s  
 Plotted by: sub  
 1/1997/97362/001/bridge/cowskin/westbound/suplayr/wb.dgn