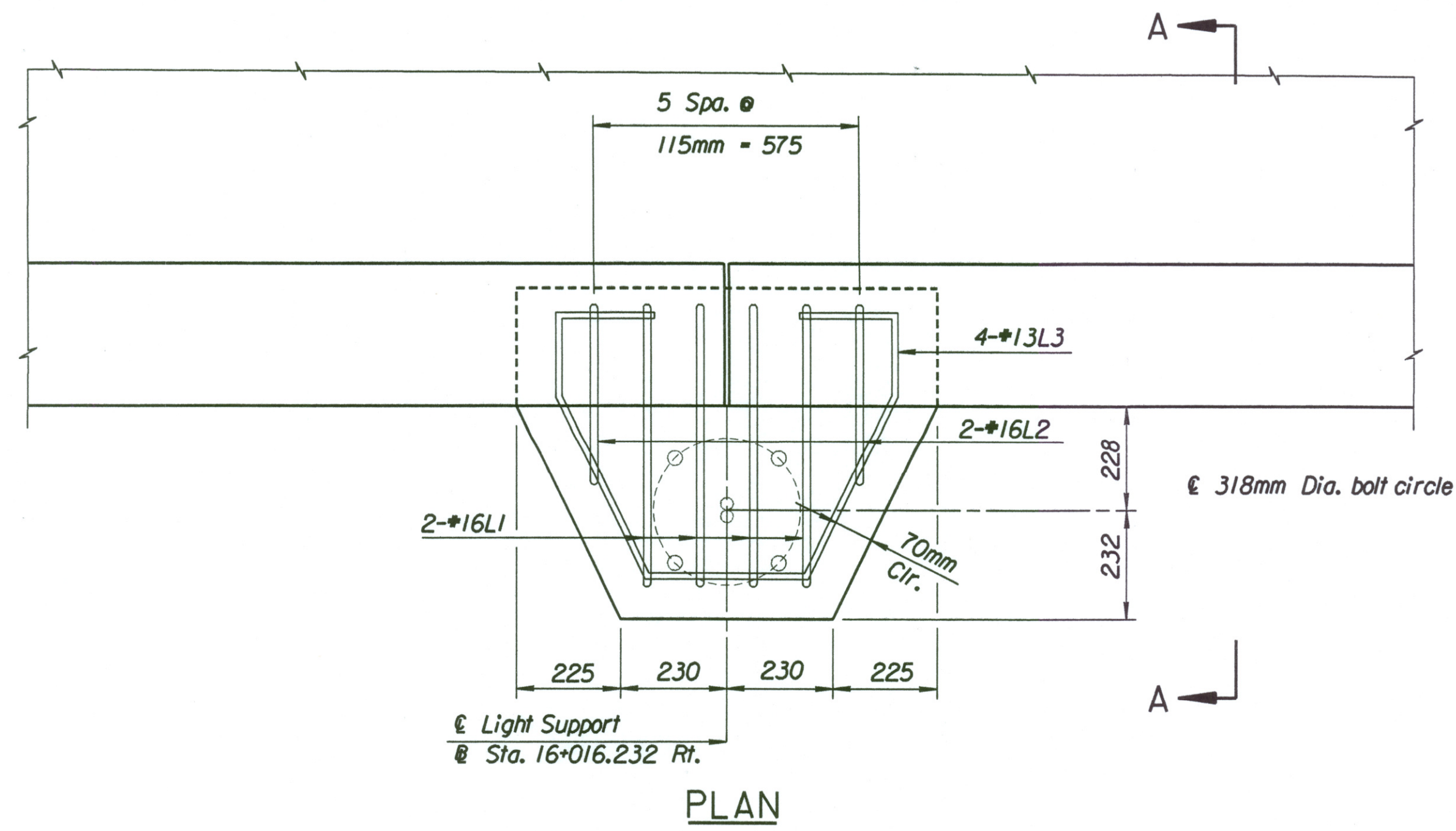
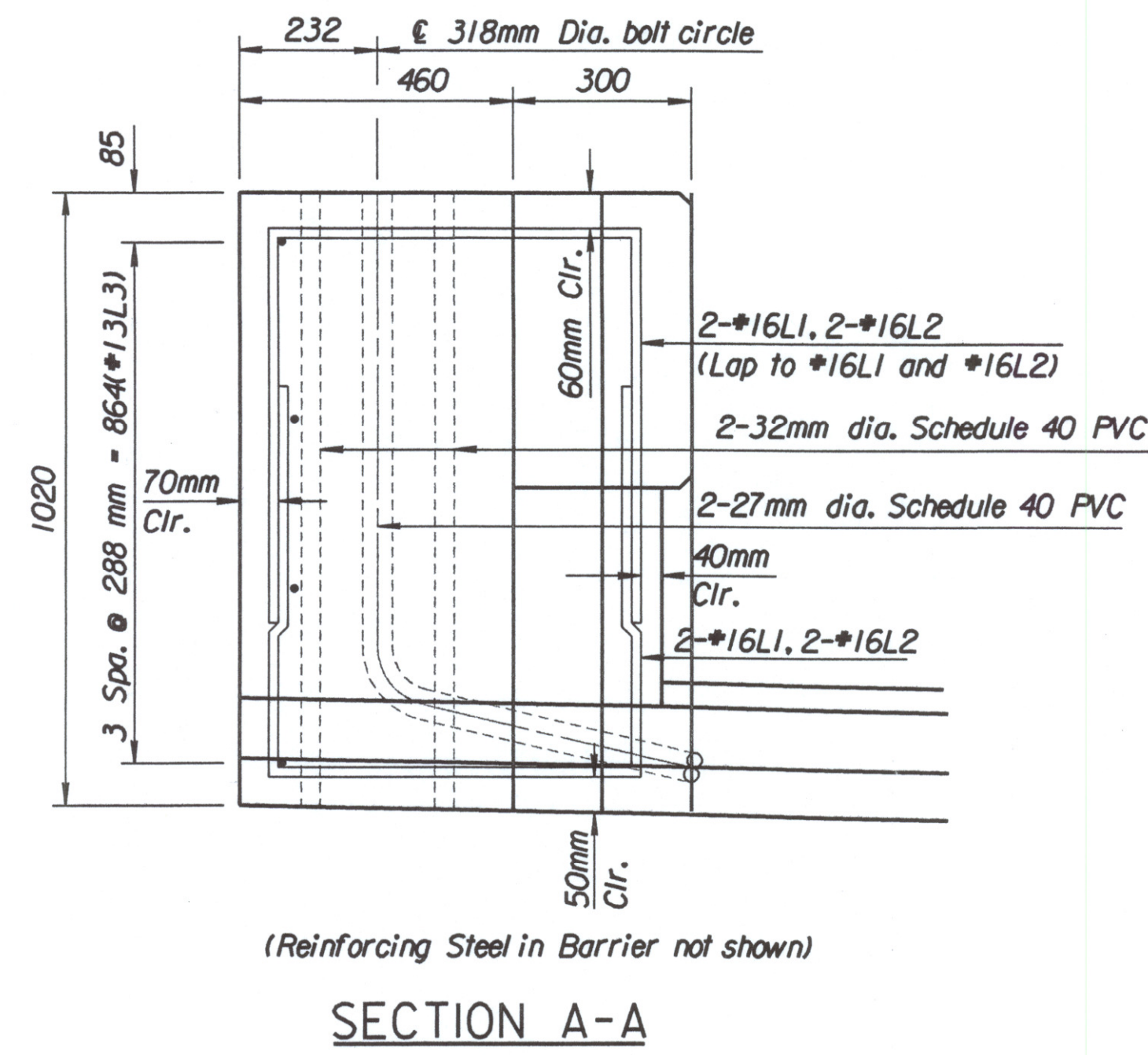


STATE	PROJECT NO.	YEAR	SHEET NO.	TOTAL SHEETS
KANSAS	54-87 K-6657-01	2002	497	1122



NOTE:
 25mm ϕ - 900mm x 100mm
 Anchor Bolts approved for
 all bridges. See Anchor
 Bolt Detail on sheet #651.

Note: 1-27mm dia. PVC for conductor use
 1-27mm dia. PVC for ground use
 See Lighting Details for location,
 (sheet # 638).



(Reinforcing Steel in Barrier not shown)

Drawn by: ras
 Plotted by: dra 3-21-2002
 I:\1997\91-362\001\bridge\cowskin\westbound\lightf.wb.dgn

No.	Revisions	By	Date
CITY OF WICHITA BR. NO. 54-87-19.32 (495) F.W.B. STA. 16+016.230			
MISCELLANEOUS RAIL DETAIL KELLOGG (US-54) OVER COWSKIN CREEK SEDGWICK COUNTY			
Professional Engineering Consultants, P.A. <small>303 S. TOPEKA • WICHITA, KANSAS 67202 316-262-2691 • FAX 316-262-3003</small>			
Designed by	RAS	Checked by	RAS
Drawn by	BJS	Date	April, 2002 Job No. 97362