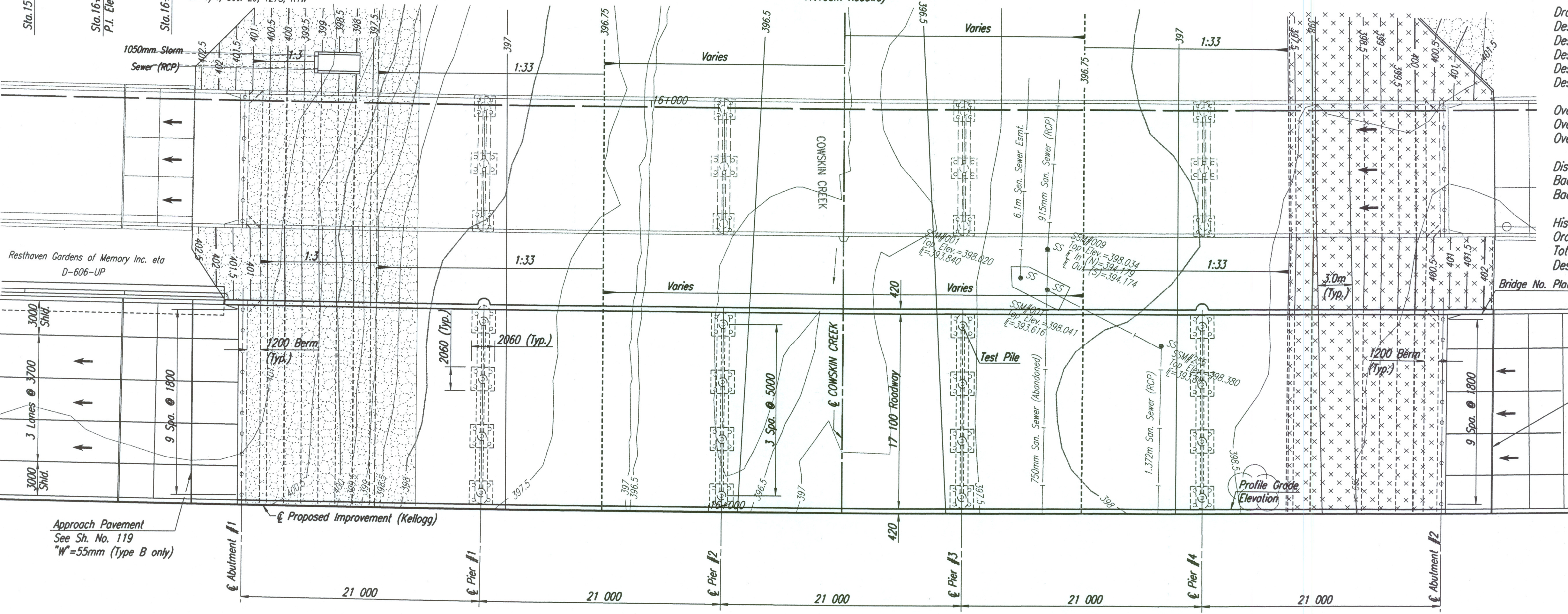
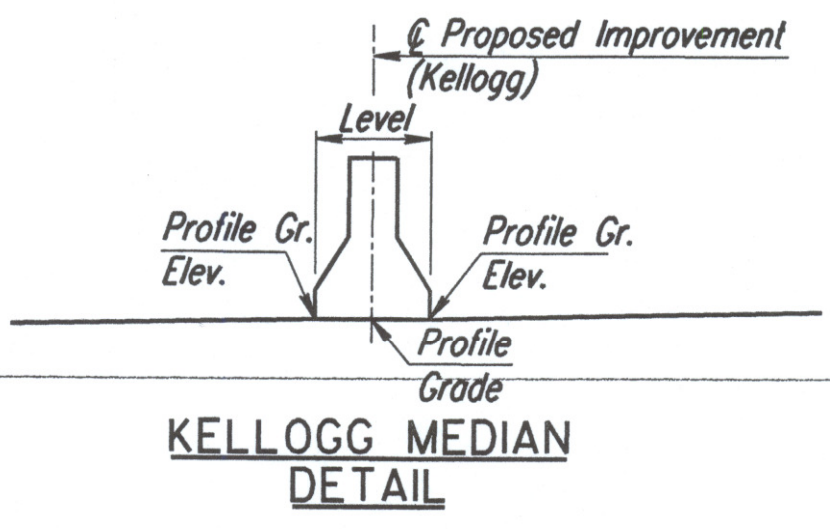
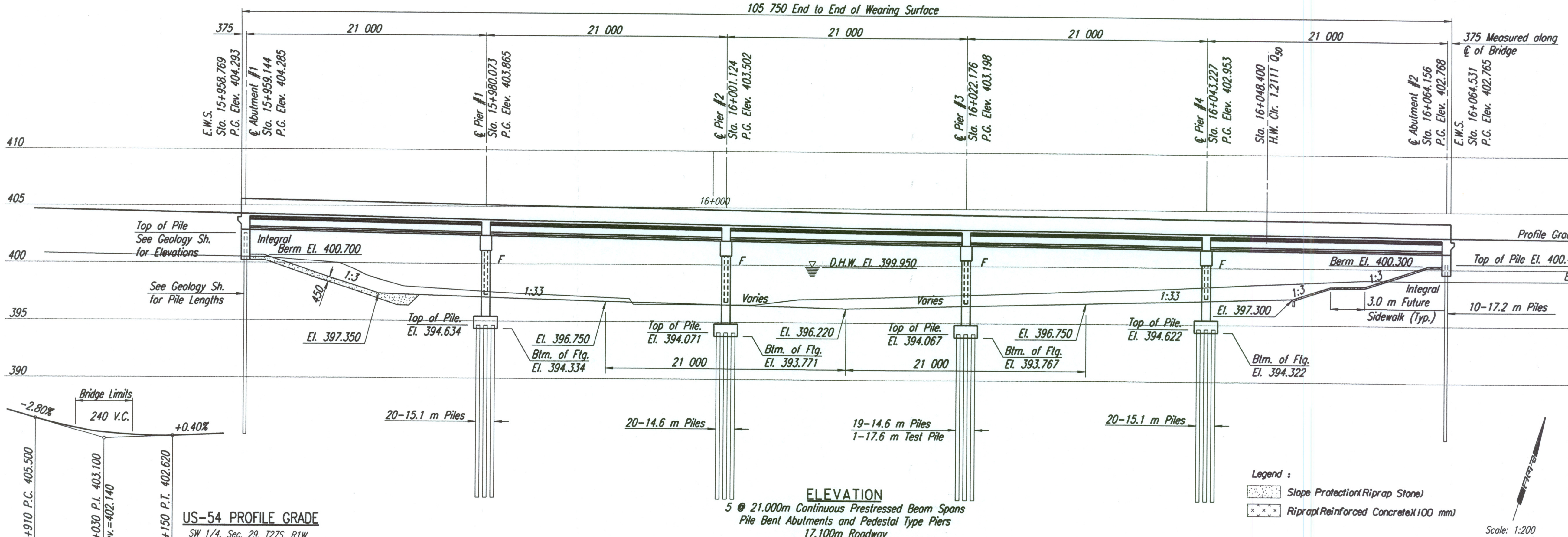


STATE	PROJECT NO.	YEAR	SHEET NO.	TOTAL SHEETS
KANSAS	54-87 K-6657-01	2002	501	1122



DRAINAGE DATA

Drainage Area----- 277km²
 Design Frequency----- 50 years
 Design Discharge (Q50)----- 399 m³/s
 Design High Water Elevation----- 399.950
 Design Backwater----- 0.183m
 Design Backwater Elevation----- 400.065

Overtopping Elevation Sta. 16+120.000- 402.560
 Overtopping Discharge----- 1330 m³/s
 Overtopping Frequency----- >500 years

Discharge at Q100----- 493 m³/s
 Backwater at Q100----- 0.244m
 Backwater Elevation at Q100----- 400.321

Historic High Water Elevation----- 400.964
 Ordinary High Water Elevation----- 398.068
 Total Waterway Provided----- 434.7 Sq. M
 Design Waterway Provided----- 259.1 Sq. M

Note:
 The thermal movement at the Abutments is +/- 13mm.

No.	Revisions	By	Date
CITY OF WICHITA			
BR. NO. 54-87-19.31(494)W.B.		STA. 16+011.650	
CONSTRUCTION LAYOUT			
WEST KELLOGG (US-54)			
OVER COWSKIN CREEK			
SEDGWICK COUNTY			
Professional Engineering Consultants, P.A.			
303 S. TOPEKA • WICHITA, KANSAS 67202			
316-262-2691 • FAX 316-262-3003			
Designed by	RAS	Checked by	RAS
Drawn by	WLL/BJS	Date	April, 2002
		Job No.	97362

Drawn by: wll/bjs
 Plotted by: arp 3-25-2002
 I:\1997\97362\001\bridge\cowskin\mainline\cowlaywb

BM #25-C.O.W. Std. Disc SW corner S. bridge over Cowskin Creek
 Sta. 15+963.766, 61.66m RL. Elev. 403.181

BM #26-Chis. "d" center east end ditch inlet in Kellogg median,
 73m ± west of Seville, Sta. 16+350.729, 25.78m RL. Elev. 401.820