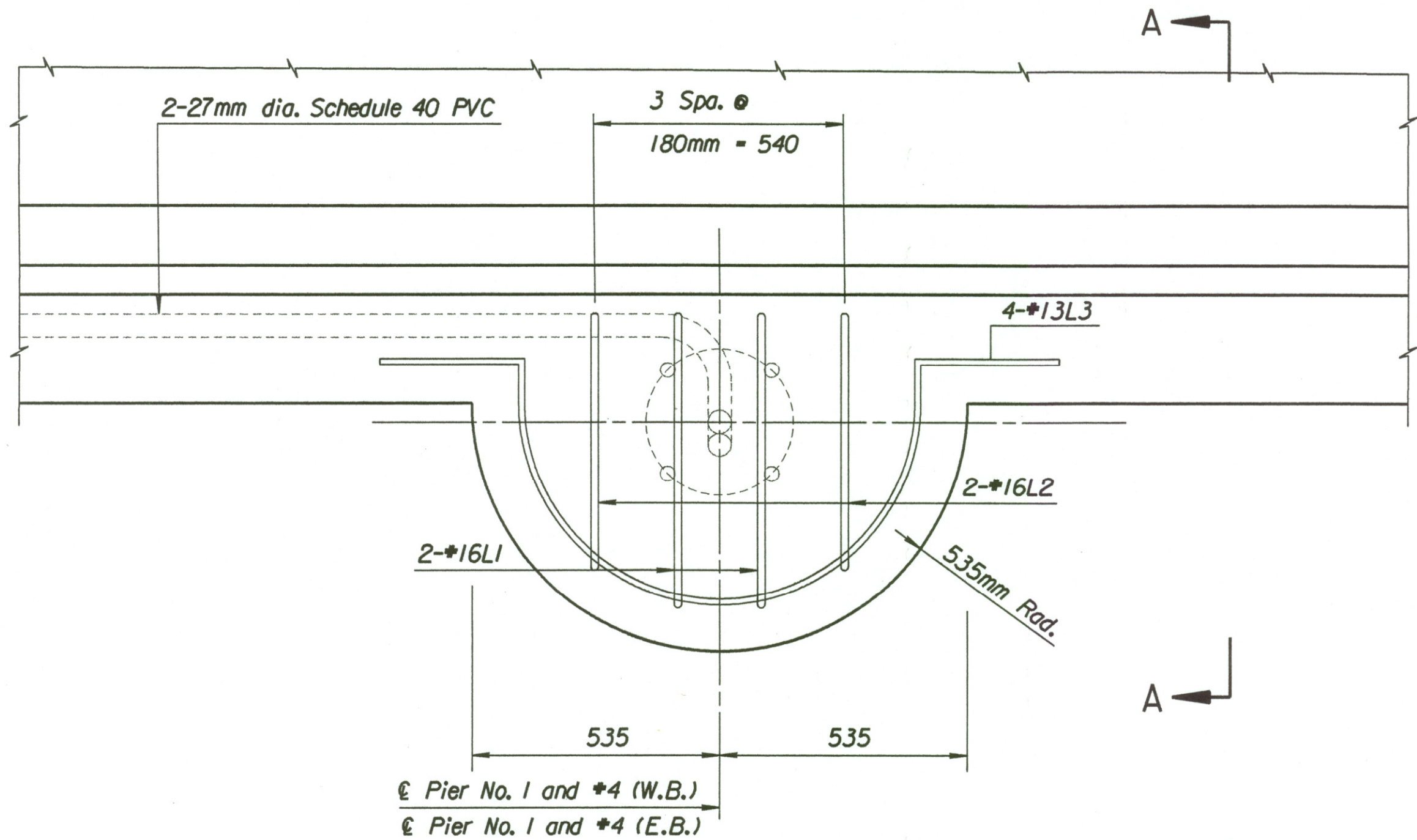
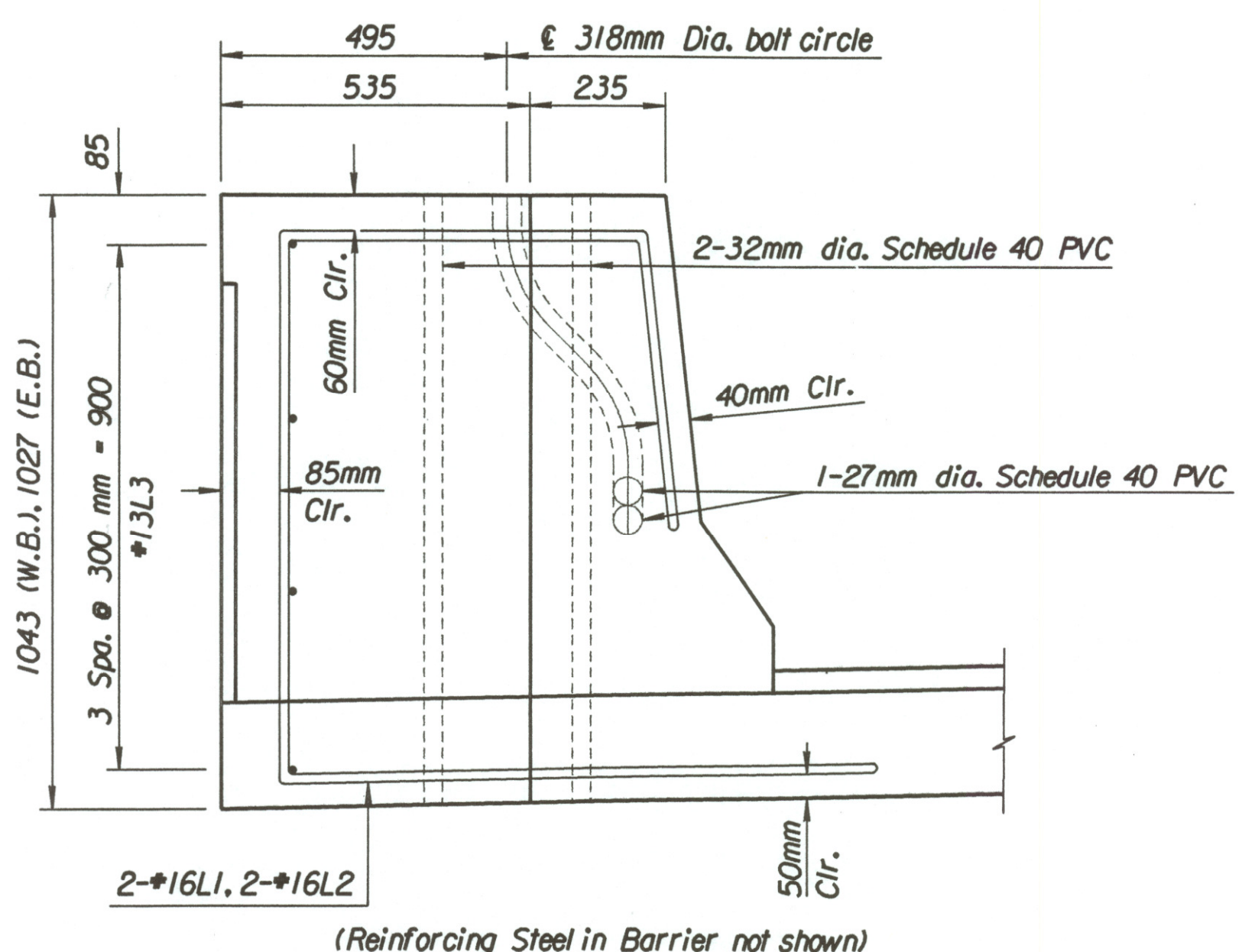


STATE	PROJECT NO.	YEAR	SHEET NO.	TOTAL SHEETS
KANSAS	54-87 K-6657-01	2002	529	1122



PLAN



SECTION A-A

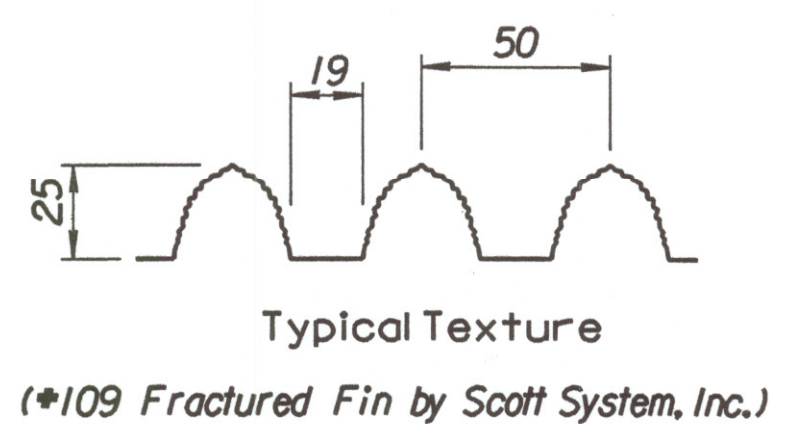
Note: 1-27mm dia. PVC for conductor use  
 1-27mm dia. PVC for ground use  
 See Lighting Details for location.



ELEVATION



SECTION



Typical Texture  
 (#109 Fractured Fin by Scott System, Inc.)

RUSTICATION DETAIL

Drawn by: ras 3-26-2002  
 Plotted by: drp  
 I:/1997/97362/001/bridge\_cowskin/MAINLINE/lightsup.dgn

Revisions		By	Date
CITY OF WICHITA			
BR. NO. 54-87-19.31 (494) W.B.		STA. 16+011.650	
BR. NO. 54-87-19.30 (493) E.B.		STA. 16+011.650	
<b>MISCELLANEOUS BARRIER DETAIL</b>			
WEST & EAST BOUND KELLOGG (US-54) OVER COWSKIN CREEK SEDGWICK COUNTY			
<b>Professional Engineering Consultants, P.A.</b>			
303 S. TOPEKA • WICHITA, KANSAS 67202 316-262-2691 • FAX 316-262-3003			
Designed by	RAS	Checked by	RAS
Drawn by	BJS	Date	April, 2002
		Job No.	97362