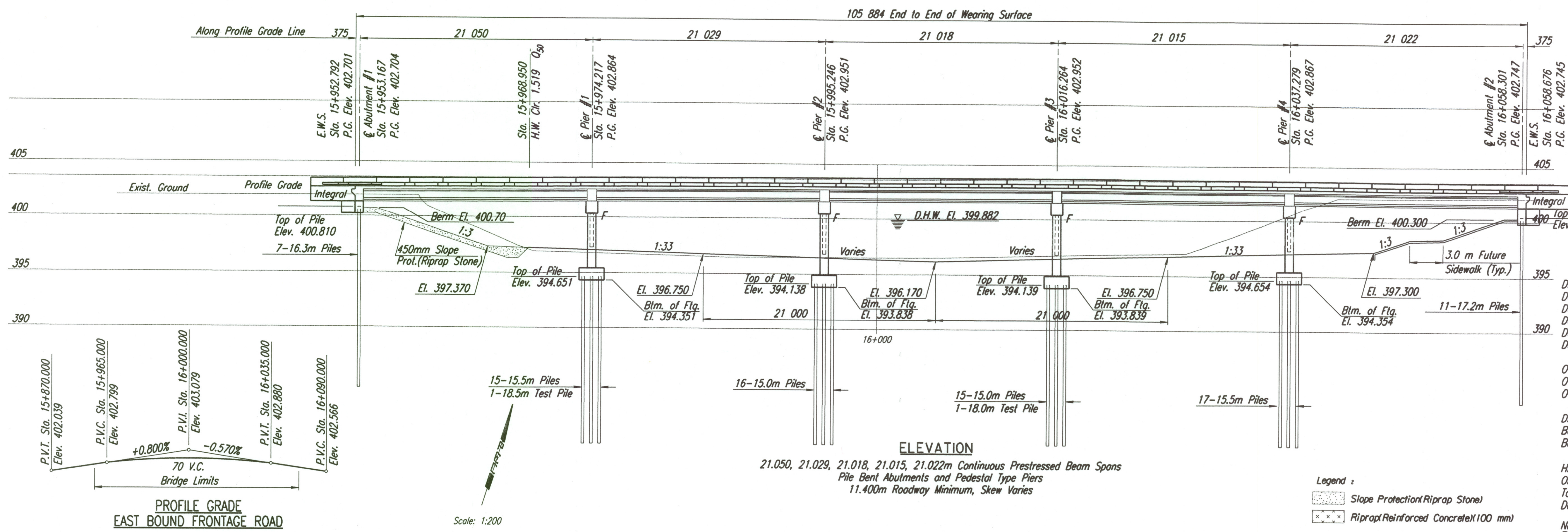


STATE	PROJECT NO.	YEAR	SHEET NO.	TOTAL SHEETS
KANSAS	54-87 K-6657-01	2002	534	1122



DRAINAGE DATA

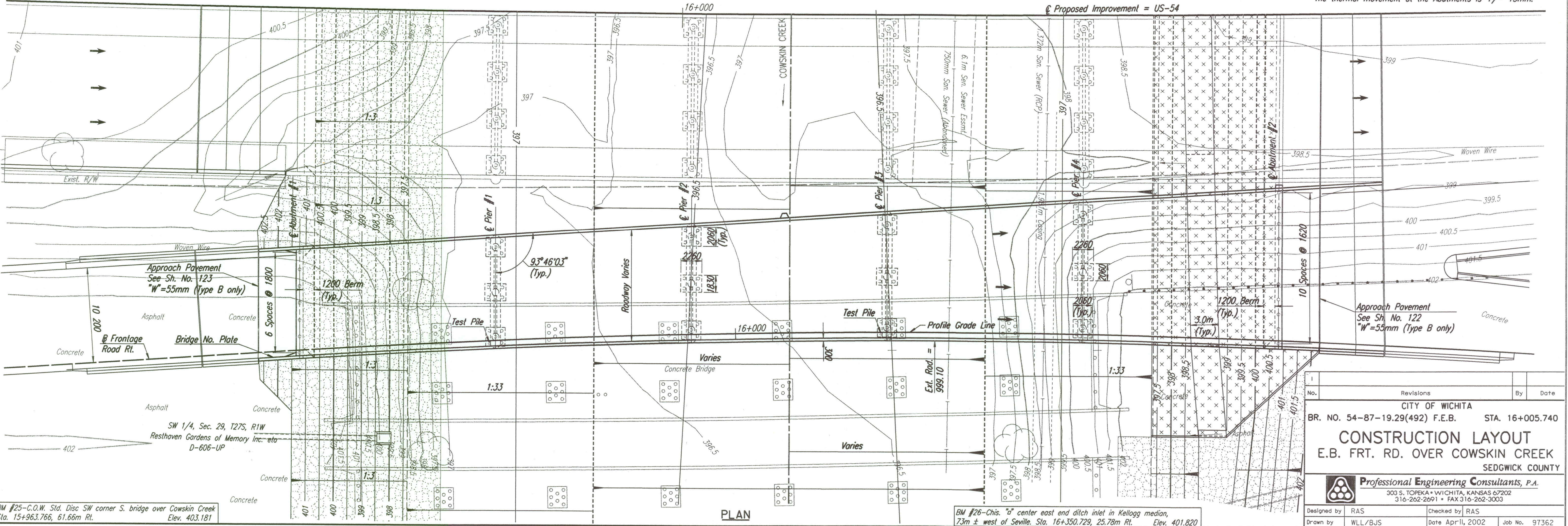
Drainage Area	277km ²
Design Frequency	50 years
Design Discharge (Q50)	399 m ³ /s
Design High Water Elevation	399.882
Design Backwater	0.183m
Design Backwater Elevation	400.065

Overlapping Elevation Sta. 15+847.778--401.950
 Overlapping Discharge-----1161 m³/s
 Overlapping Frequency----->500 years

Discharge at Q100-----493 m³/s
 Backwater at Q100-----0.244m
 Backwater Elevation at Q100-----400.321

Historic High Water Elevation-----400.964
 Ordinary High Water Elevation-----398.068
 Total Waterway Provided-----385.5 Sq. M
 Design Waterway Provided-----275.3 Sq. M

Note:
 The thermal movement at the Abutments is +/- 13mm.



No.	Revisions	By	Date

CITY OF WICHITA
 BR. NO. 54-87-19.29(492) F.E.B. STA. 16+005.740
CONSTRUCTION LAYOUT
 E.B. FRT. RD. OVER COWSKIN CREEK
 SEDGWICK COUNTY

Professional Engineering Consultants, P.A.
 303 S. TOPEKA - WICHITA, KANSAS 67202
 316-262-2691 • FAX 316-262-3003

Designed by RAS
 Drawn by WLL/BSJ
 Checked by RAS
 Date April, 2002
 Job No. 97362

DSNR: RAS OPER: BUS SCALE: 1:200
 1:/1997/97362/001/BRIDGE/COWSKIN/EASTBOUND/FRTRDEB.DGN LAST REV: 3-22-2002 BY: wll