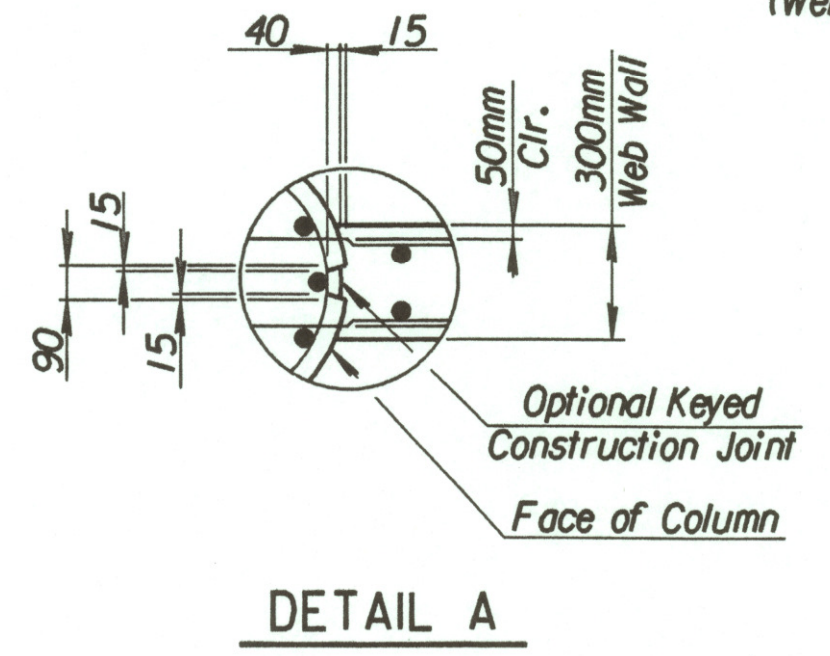
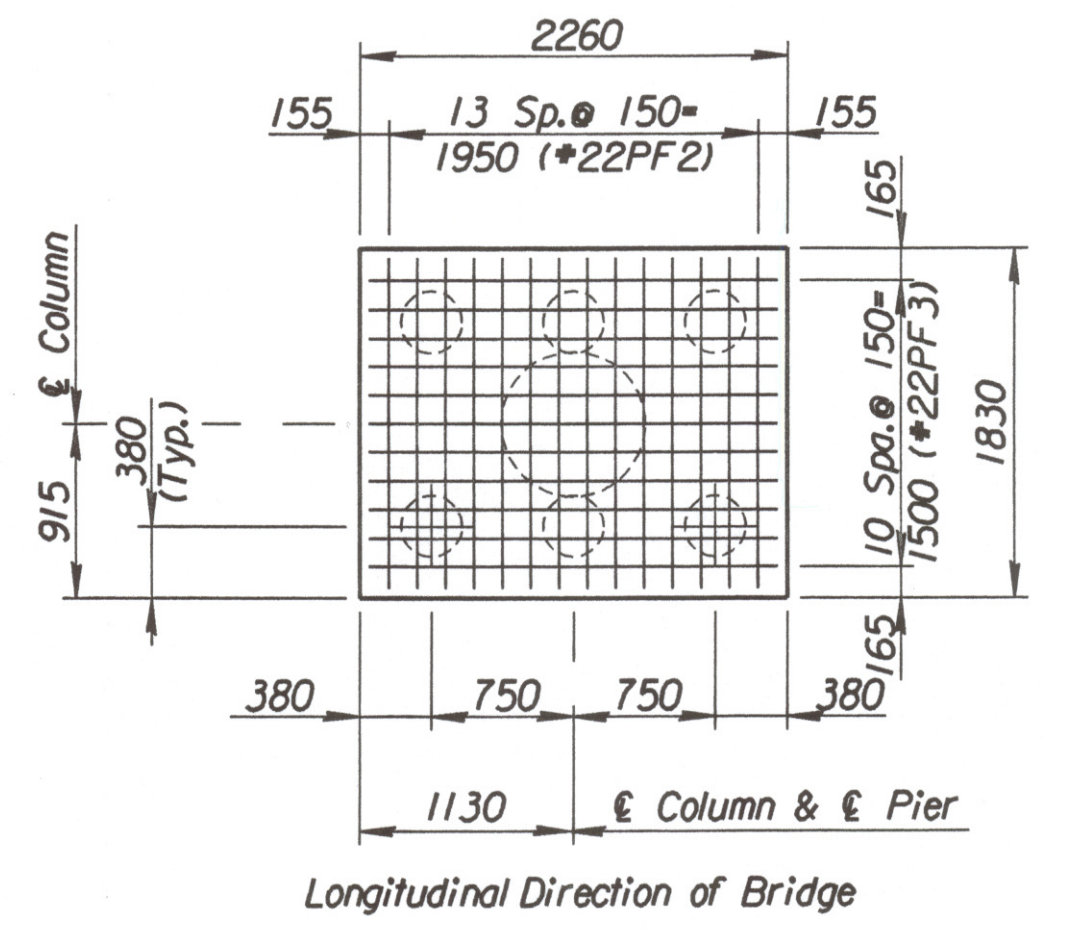
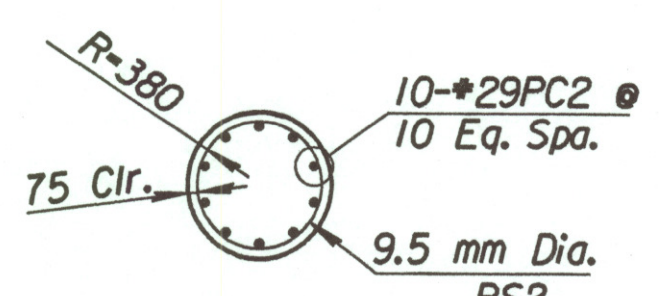
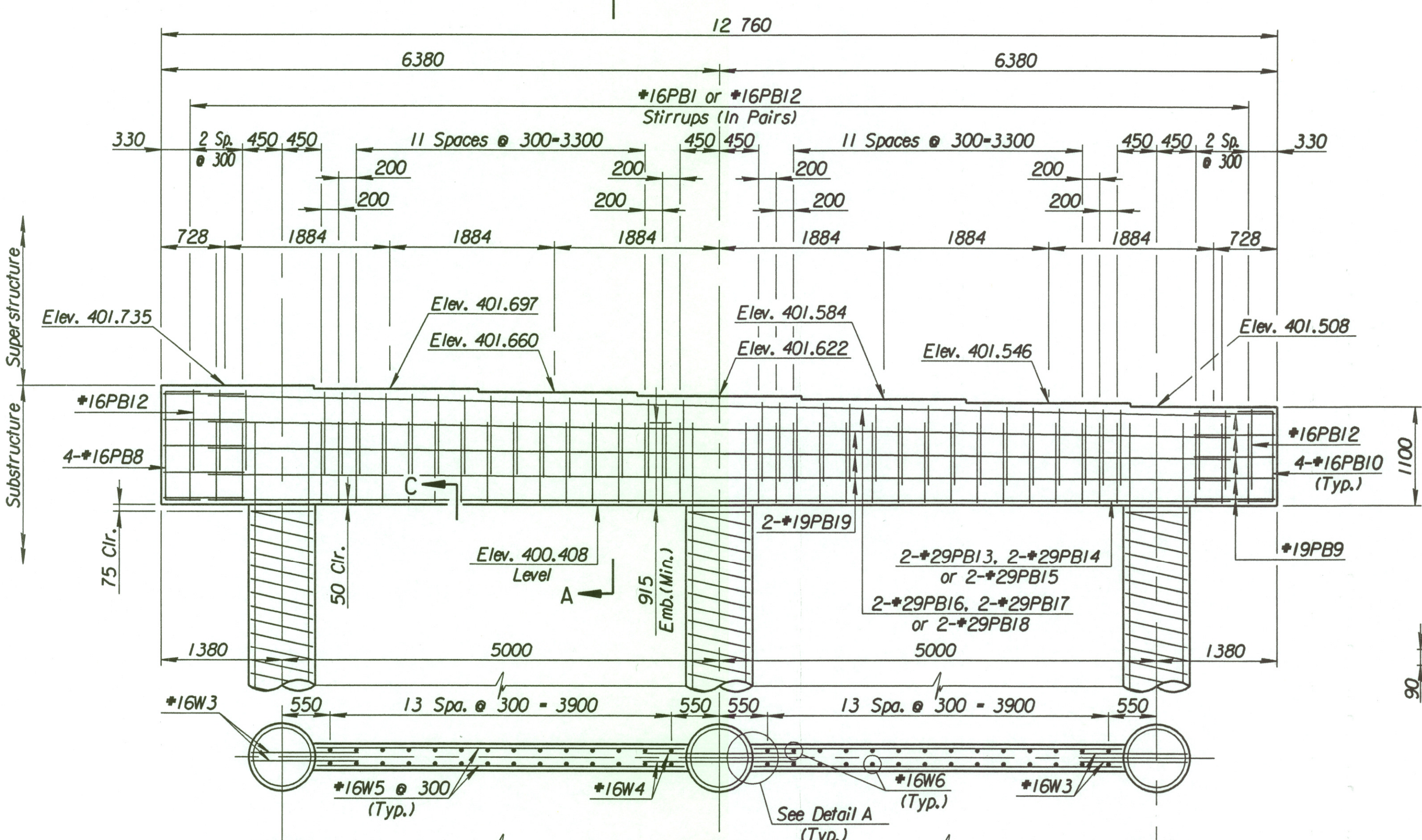
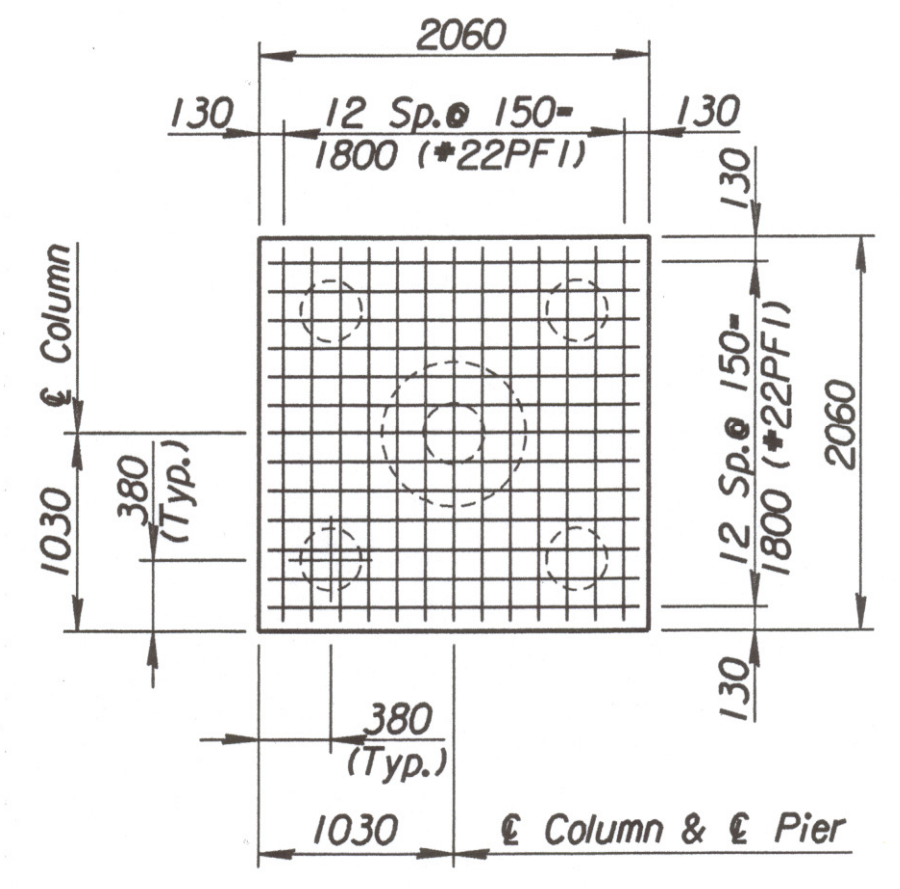
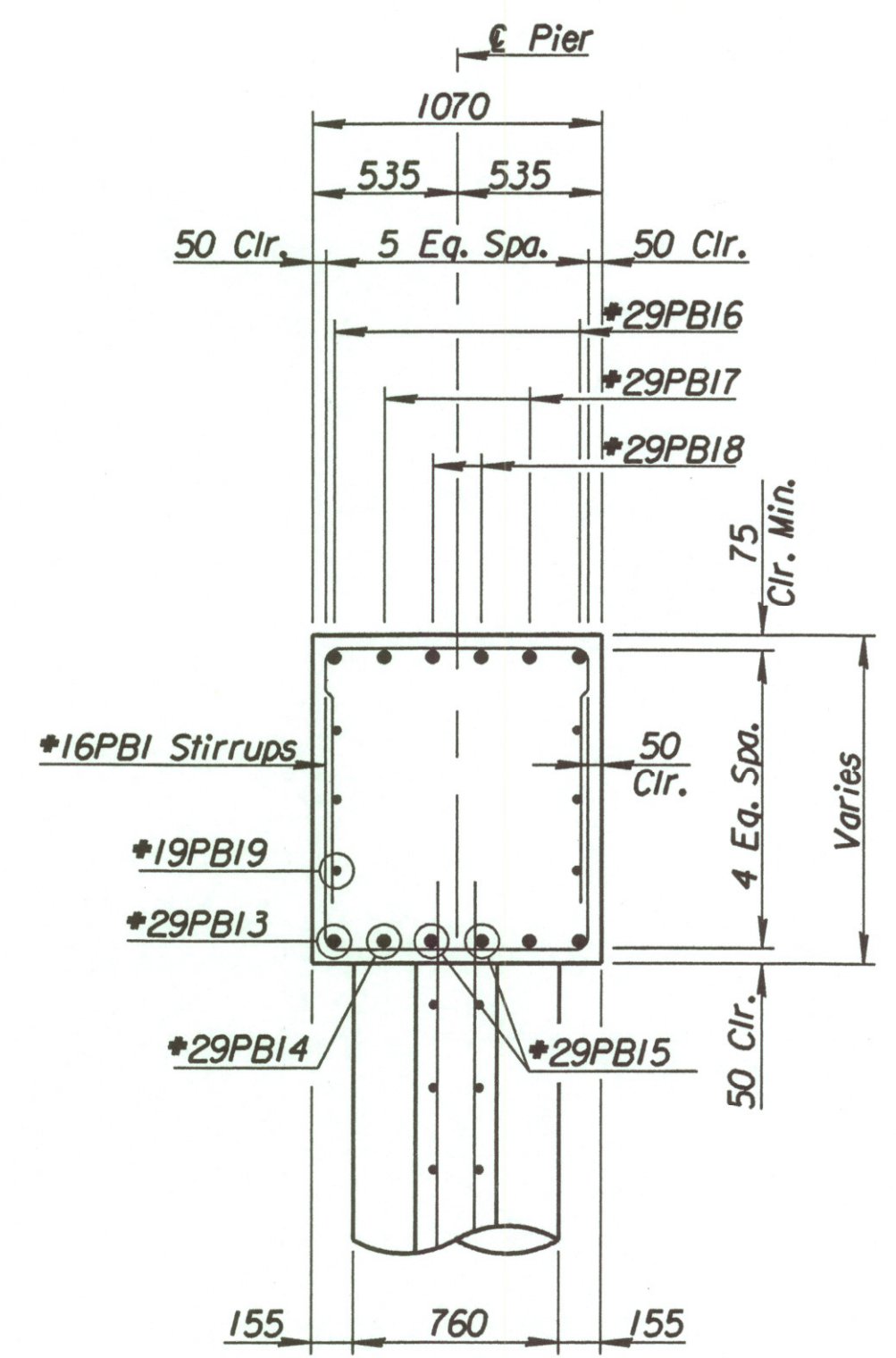
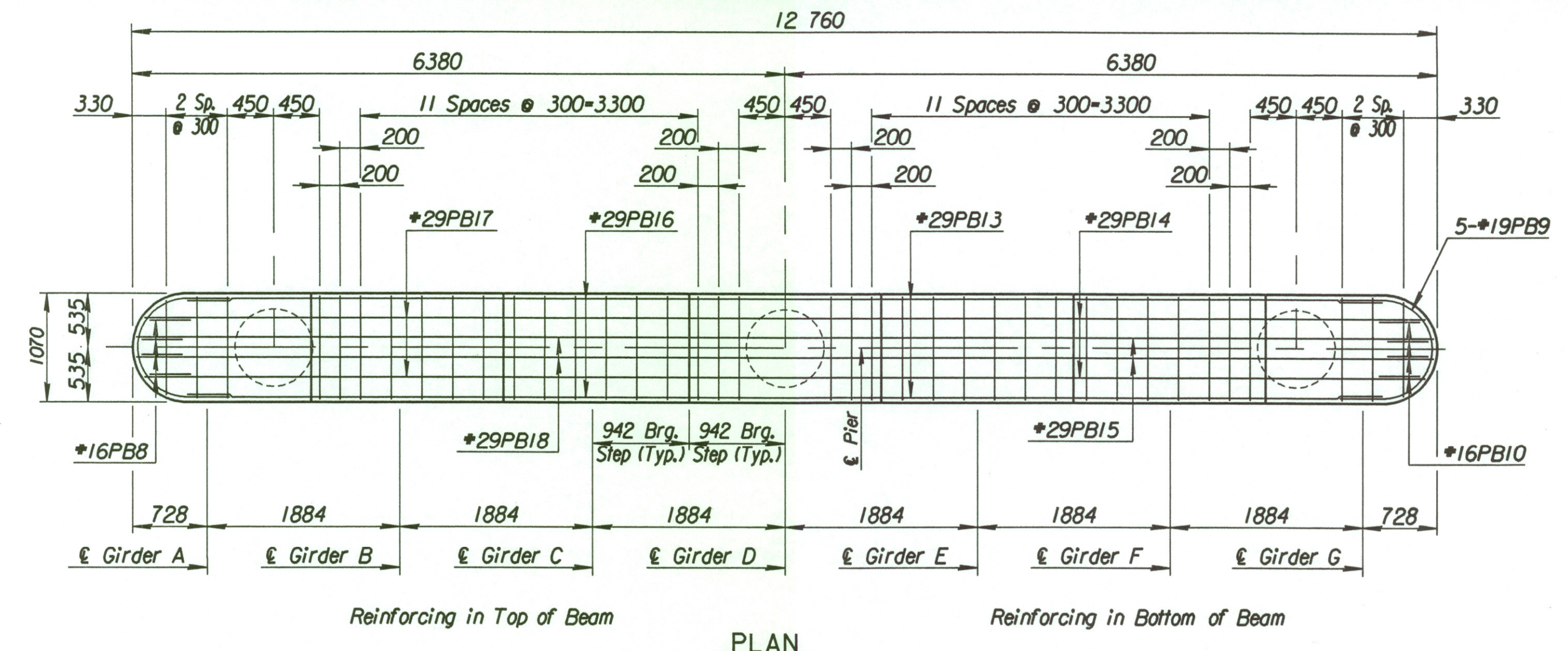
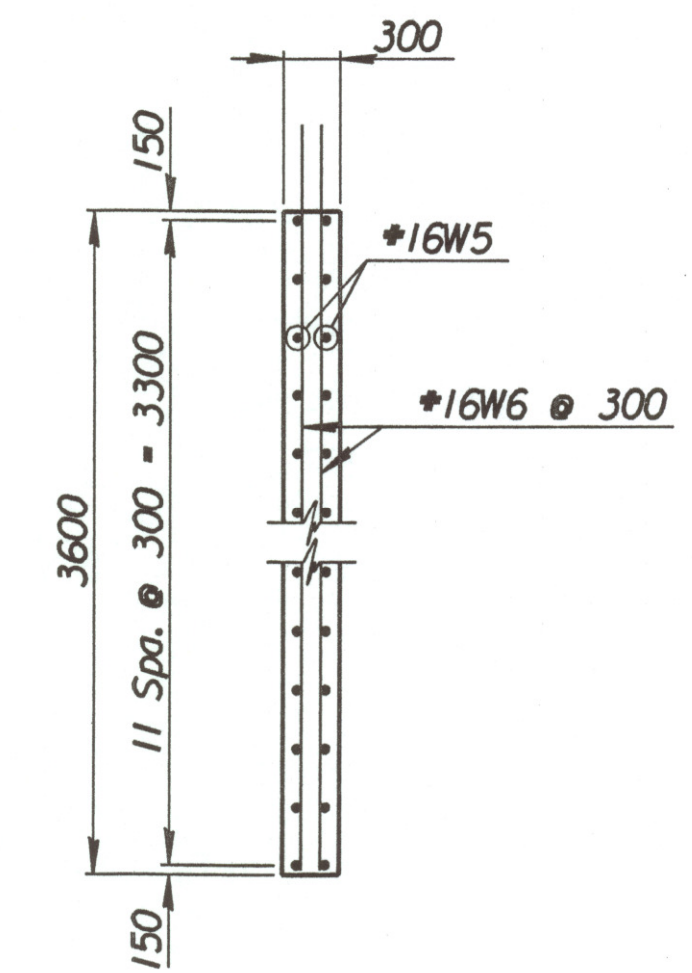


STATE	PROJECT NO.	YEAR	SHEET NO.	TOTAL SHEETS
KANSAS	54-87 K-6657-01	2002	540	1122



Note: Either cast the columns and pier web monolithically or cast the columns separately using keyed joint as shown in Detail A. If the columns are cast separately, use threaded deformed bars in lieu of W3 & W4 dowel bars. Bar diameter and embedment length into the web wall shall be as designated. The inserts shall develop the full yield strength of the bars. No change in compensation is allowed with the use of inserts. Coil inserts are not allowed.



Pier Pile Loading (kN)

	Computed	Allowable
Group I Loading	410	440
Group III Loading	503	550
Group IV Loading	510	550
Group V Loading	455	616

Note: See Diaphragm Detail Sheet for Number and Location of #19PB36 bars.

DSNR: RWA OPER: gdr SCALE: 1:40 12/1997/97362/001/bridge/cowskin/eastbound/pier1.dgn Last Rev: 3-15-2002 By: wll

Revisions		By	Date
No.			

CITY OF WICHITA
BR. NO. 54-87-19.29(492)(F.E.B.) STA. 16+005.740

PIER NO. 2 DETAILS
EAST BOUND FRONTAGE ROAD
OVER COWSKIN CREEK
SEDGWICK COUNTY

Professional Engineering Consultants, P.A.
303 S. TOPEKA - WICHITA, KANSAS 67202
316-262-2691 - FAX 316-262-3003

Designed by R.W.A. Checked by R.A.S.
Drawn by GDR Date April, 2002 Job No. 97362