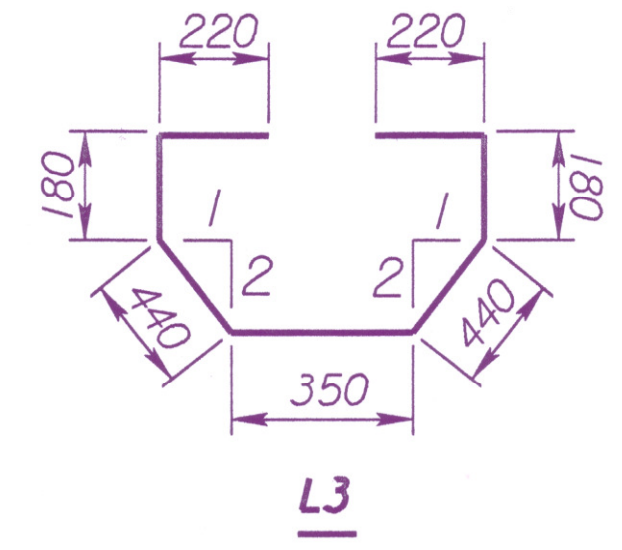
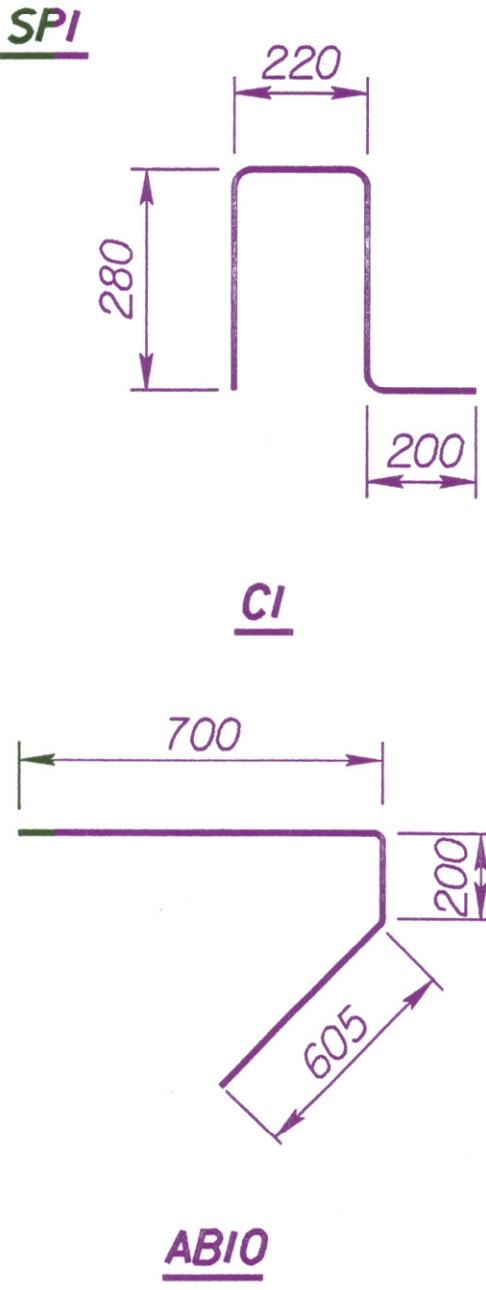
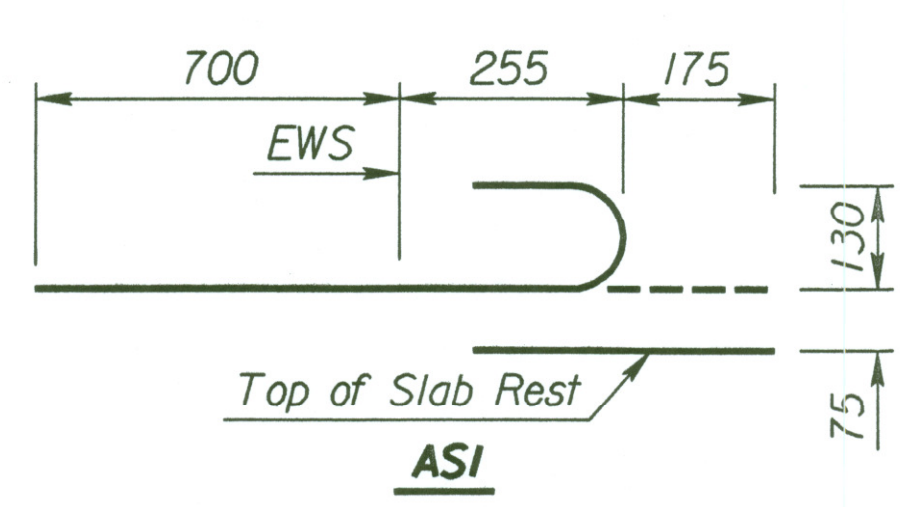
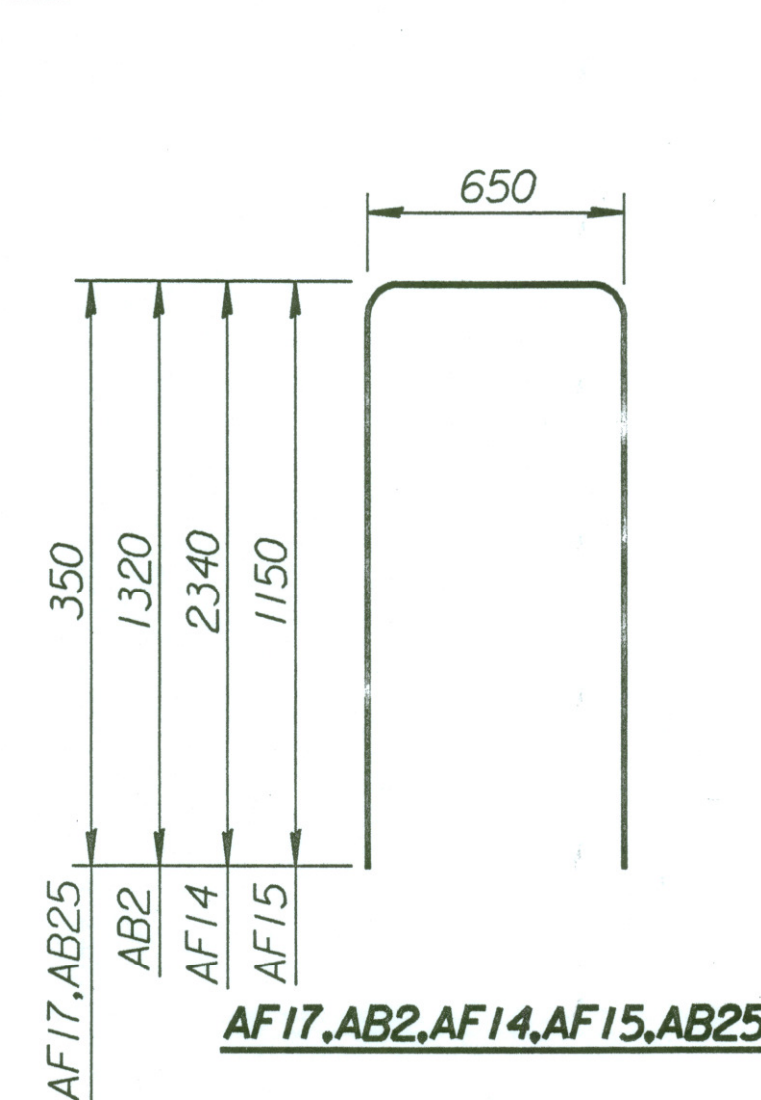
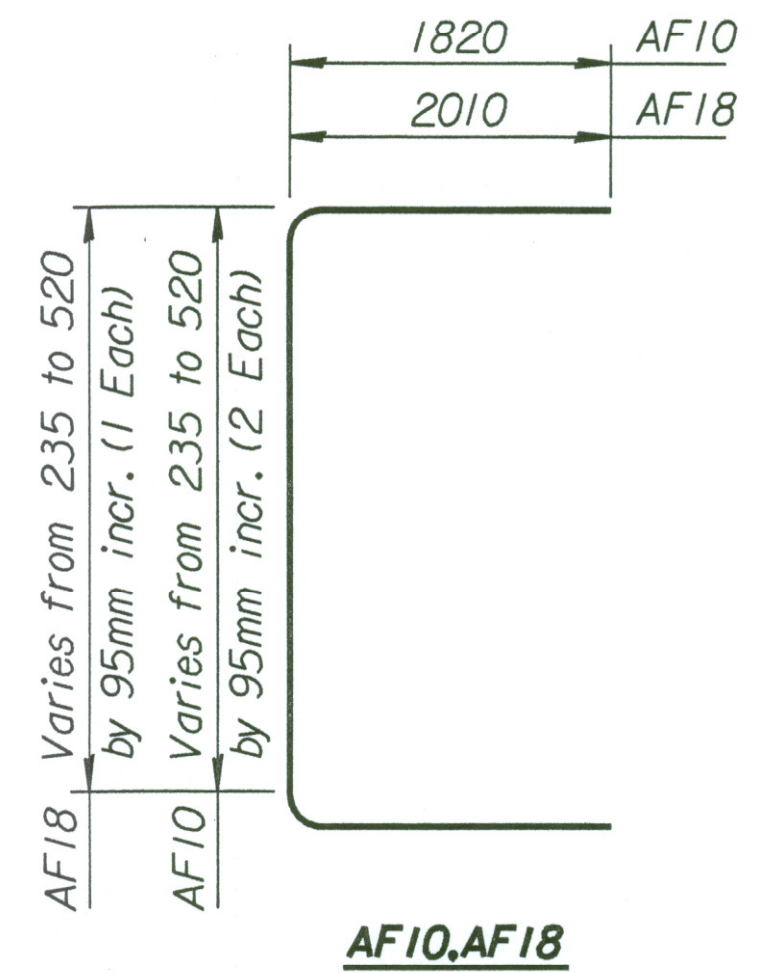
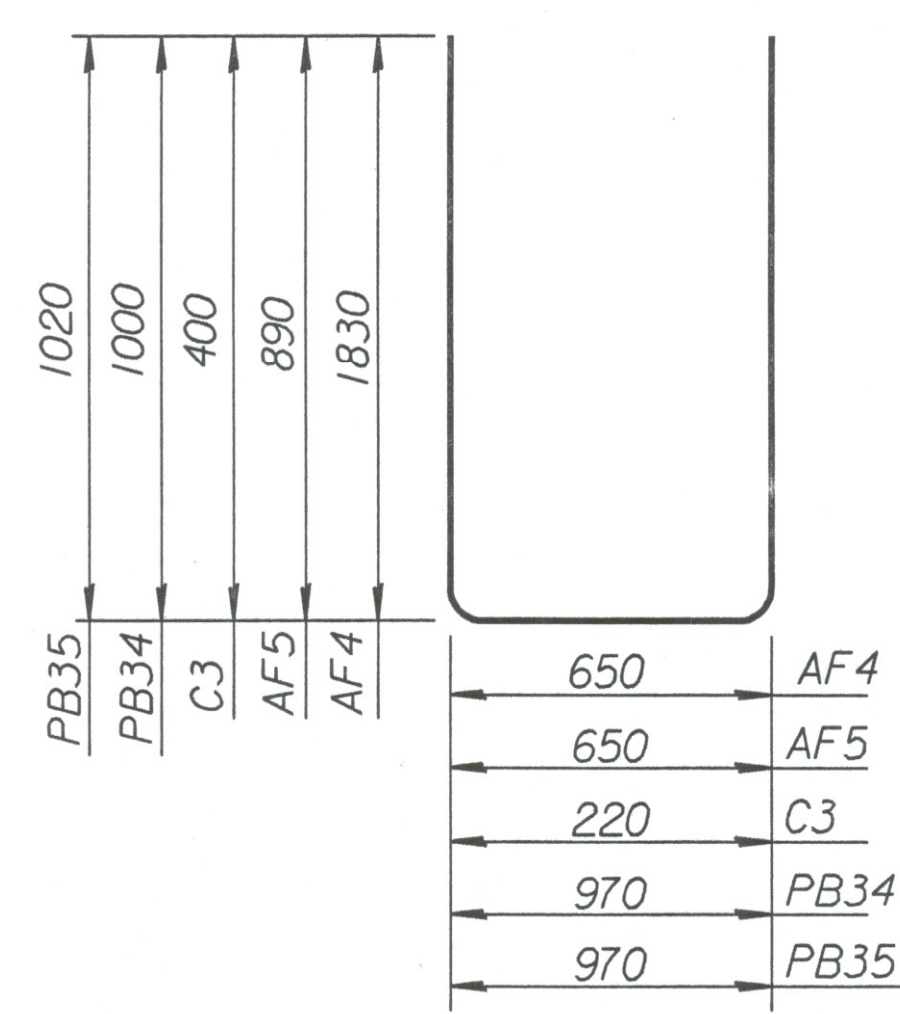
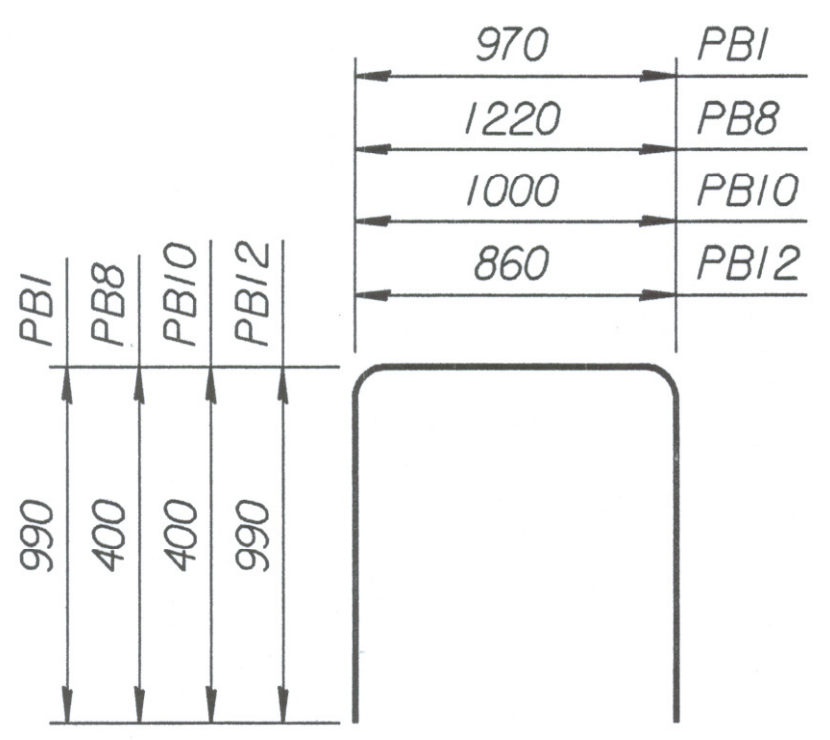
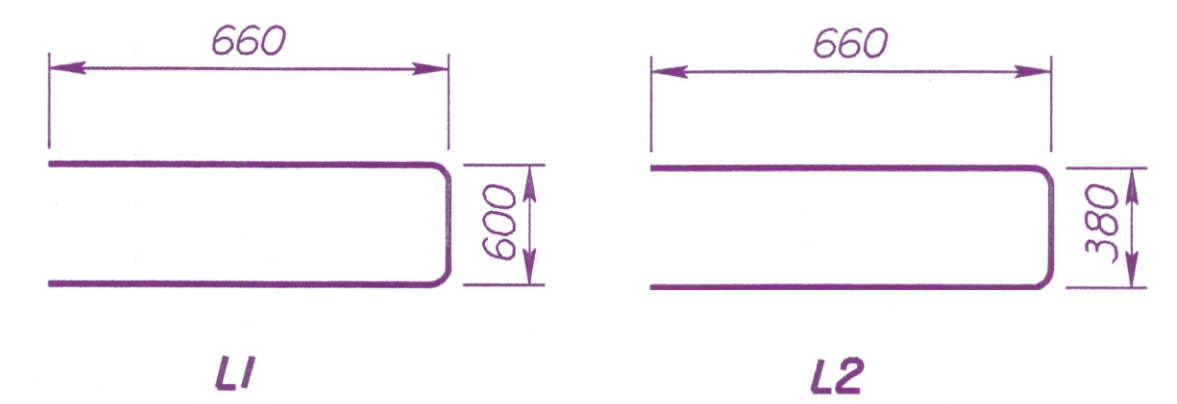
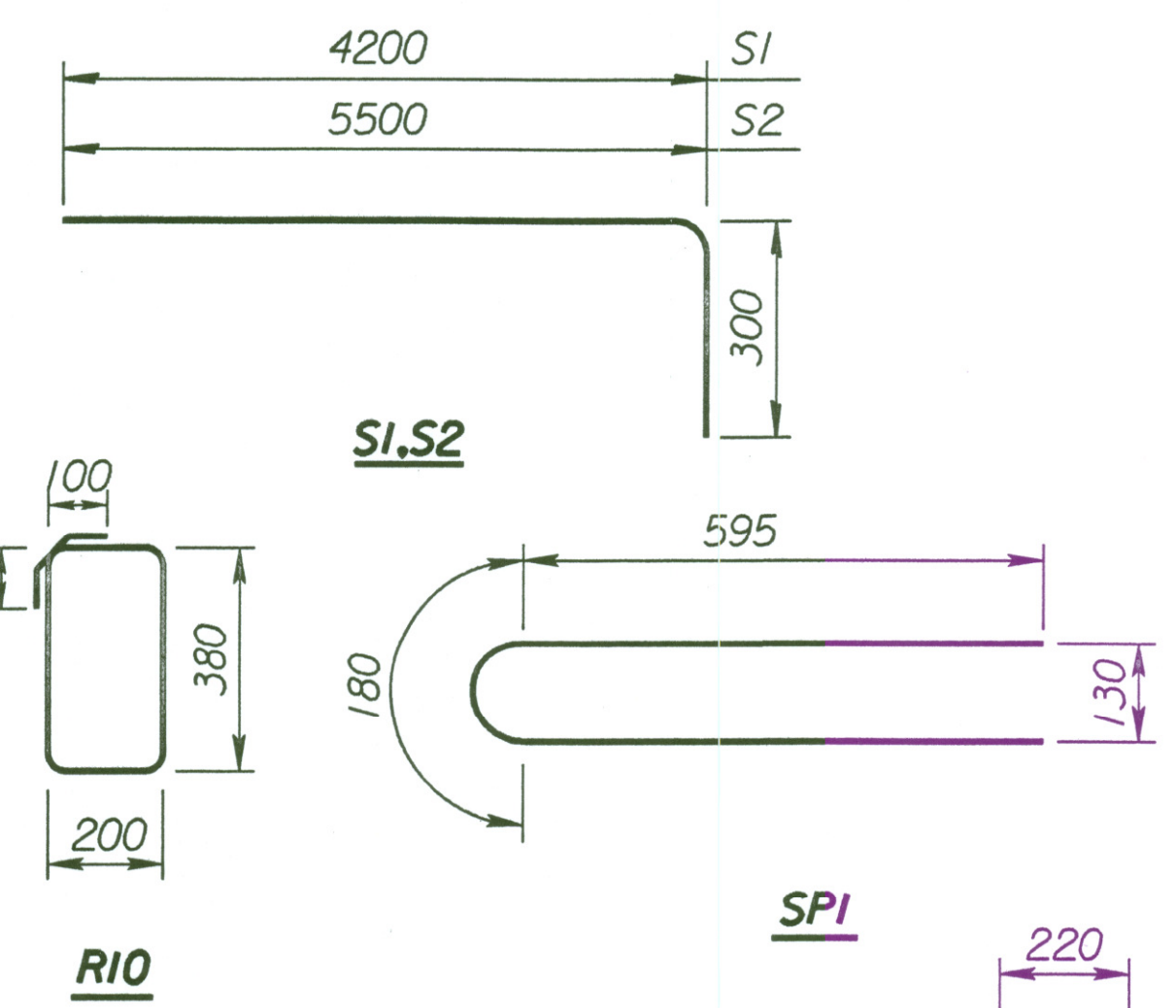
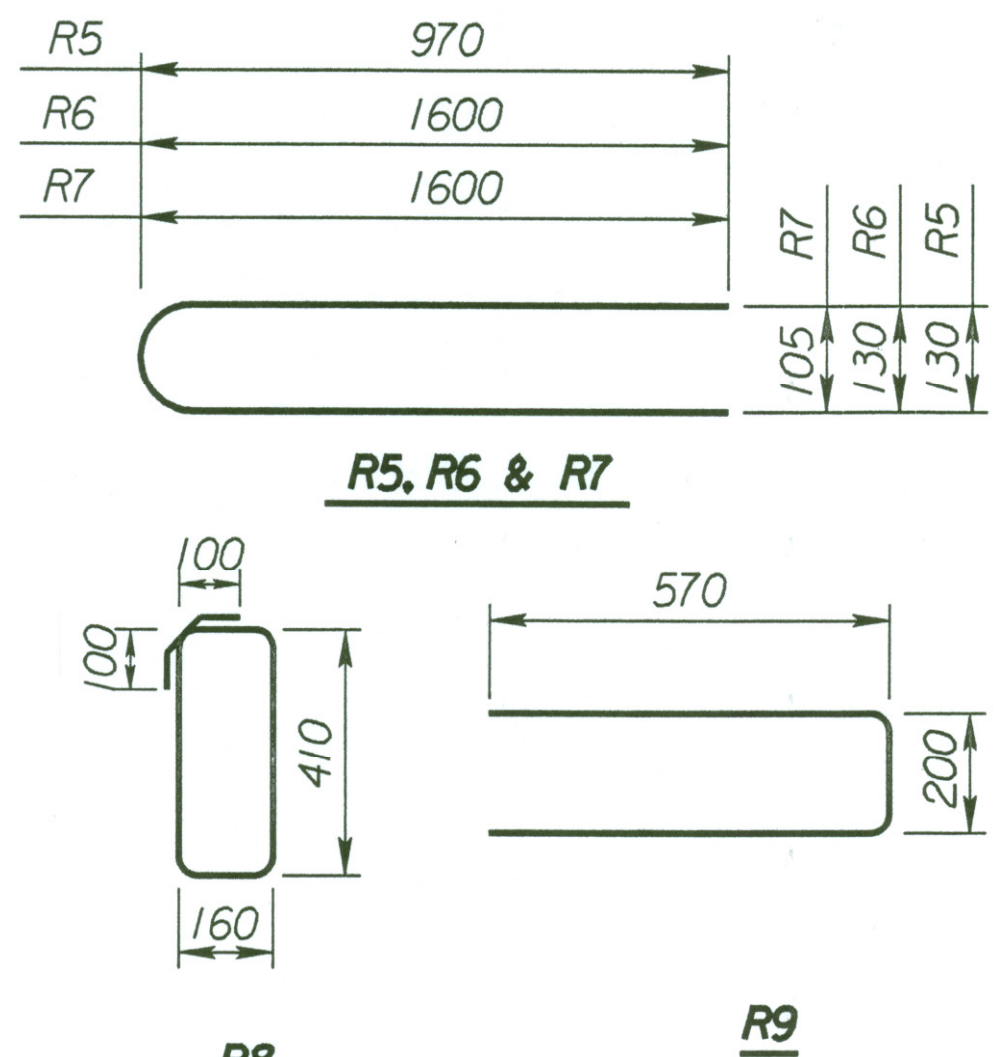
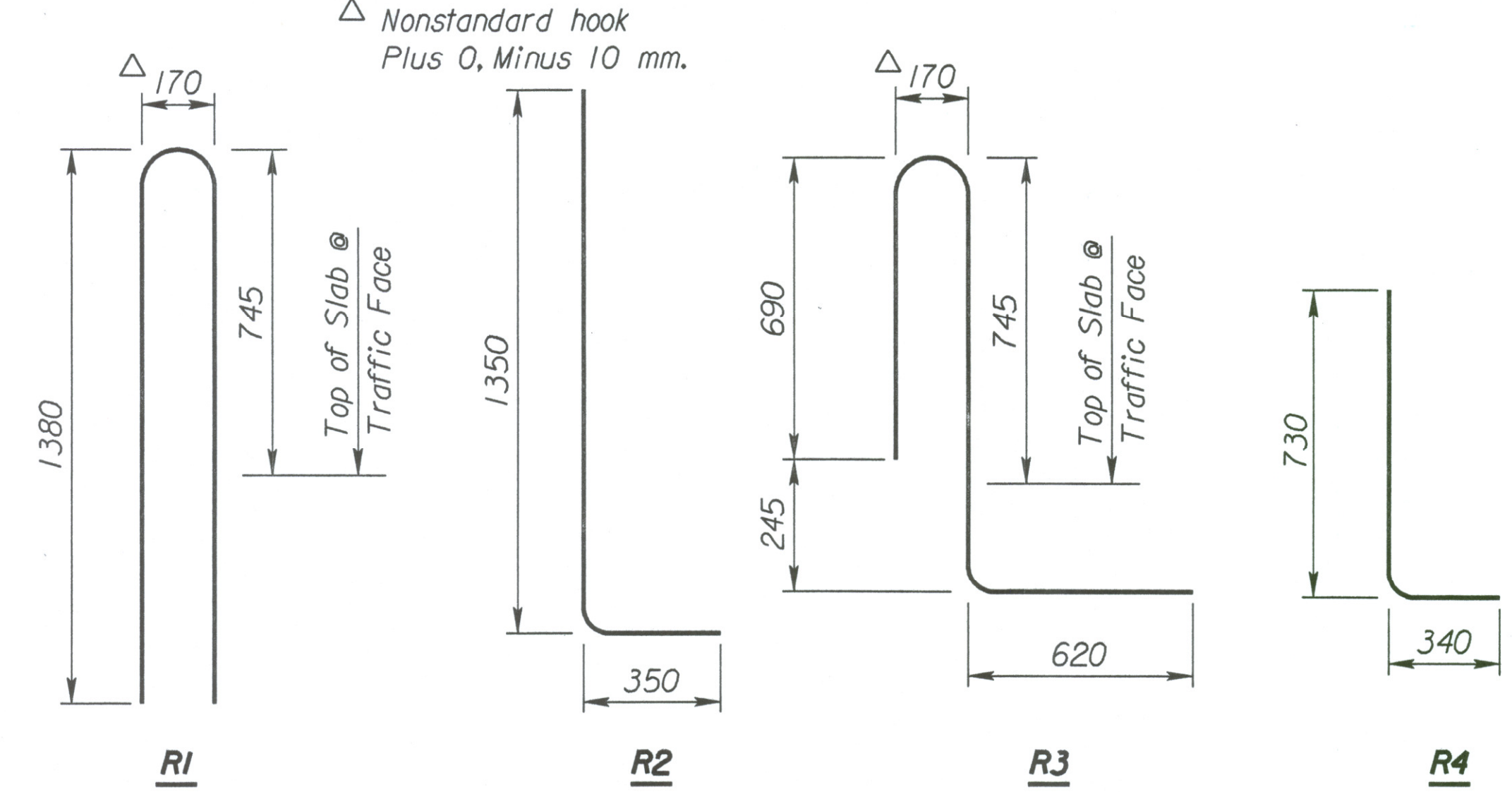


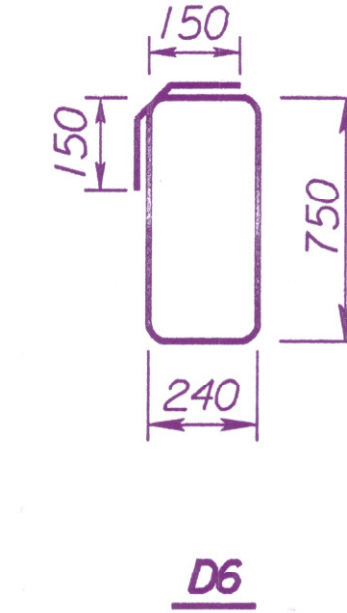
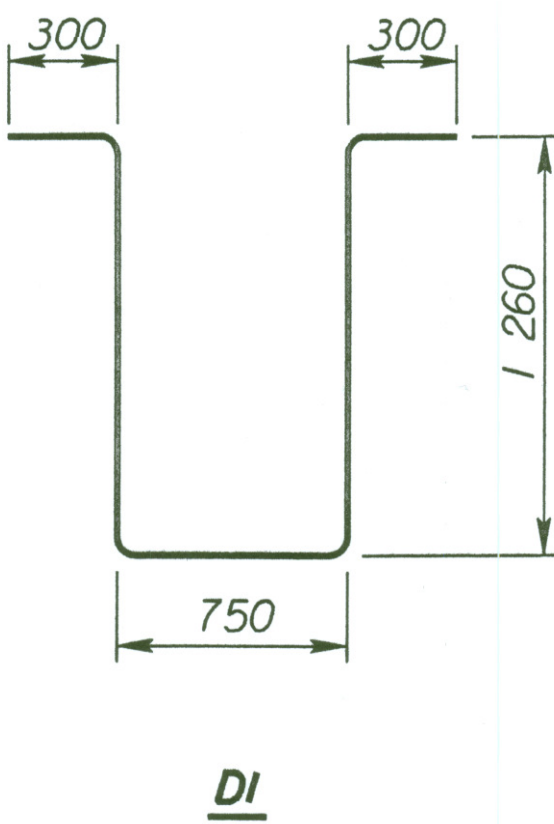
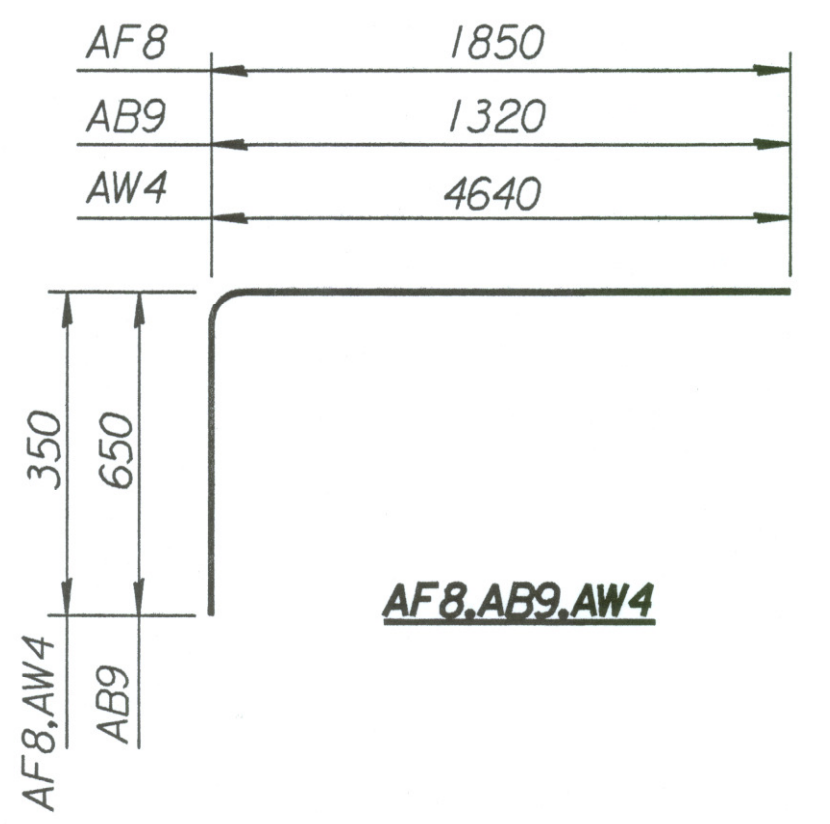
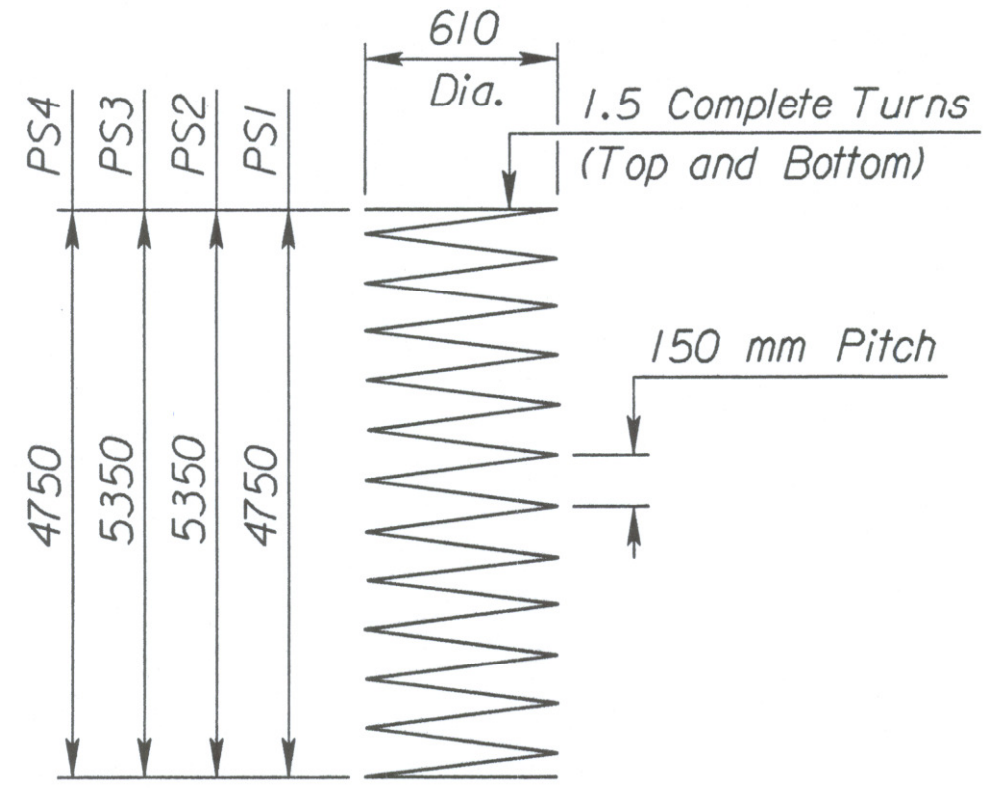
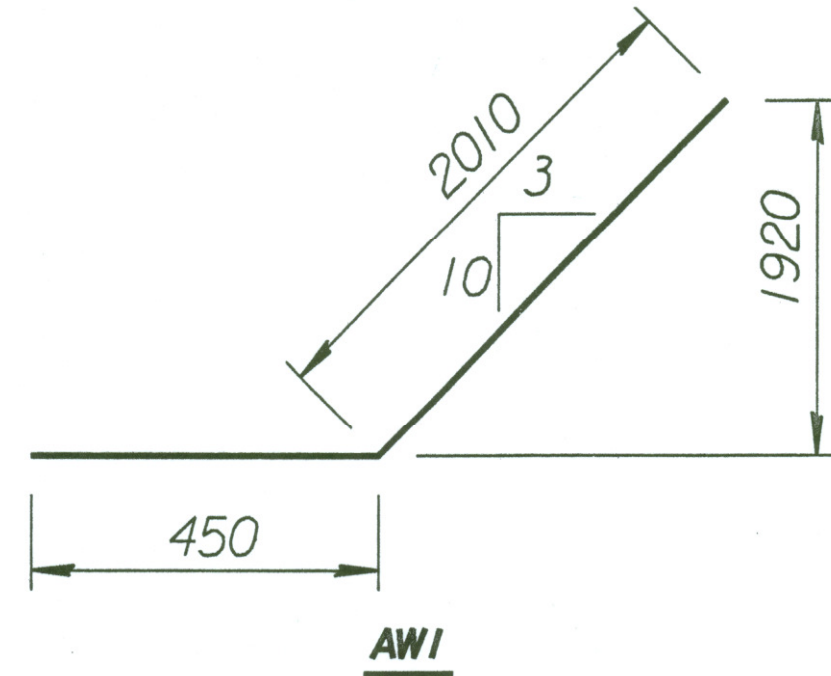
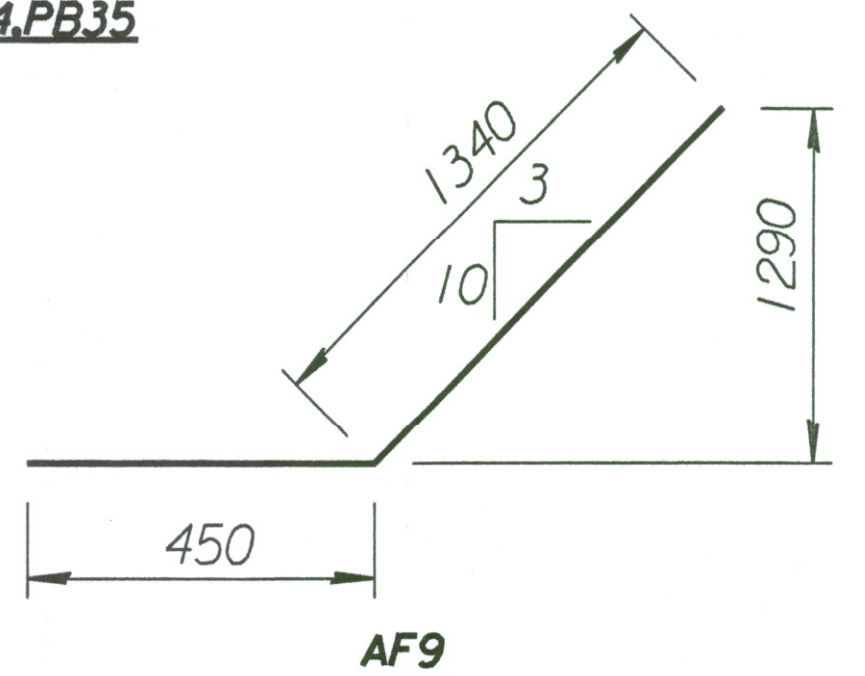
STATE	PROJECT NO.	YEAR	SHEET NO.	TOTAL SHEETS
KANSAS	54-87 K-6657-01	2002	561	1122

Plotted By : svb  
 Plot File : i:\1997\97362\001\bridge\cowskin\eastbound\reins\l1fab  
 Plot Date : 3-27-2002  
 Std. Base File : /usr7/sihslab/br60lbsi.dgn  
 Server File : /usr2/  
 Server : witch  
 View: PLOT4



Mark	a	b	c	d
T3	9260	9920	6	1
T4	9870	10 970	10	1
T5	10 930	12 470	14	1
T6	12 440	14 348	18	1
T9	6120	6795	5	1
T10	6740	7820	8	1
T11	7800	9285	11	1
T12	9300	11 265	15	1

Incr. from (a) to (b) by (c)  
 cut (c) each length  
**T3, T4, T5, T6, T9, T10, T11, T12**



**BENDING DIAGRAMS**

(All dimensions are out to out of bars.)

See Bill of Steel for details.

Spiral reinforcing shall meet the requirements of ASTM A615M-96 Grade (420 or 300) or ASTM A82M. Spiral Spacer Bars:  
 1) Are included in the mass of reinforcing steel.  
 2) Minimum section modulus = 130 mm<sup>3</sup>  
 3) 3 required per spiral.

2					
1					
NO.	DATE	REVISIONS	BY	APP'D	
<b>CITY OF WICHITA</b> Br. No. 54-87-19.29(492)F.E.B.Sta. 16+005.740 <b>REINFORCING BENDING DIAGRAMS</b> Sedgwick County					
SHEET NO.	OF	SCALE	APP'D		
DESIGNED	DRT	DETAILED	DRT	QUANTITIES	CADD
DESIGN CK.	SMS	DETAIL CK.	QUAN. CK.	CADD CK.	GFK