

**ADDENDUM #3:**

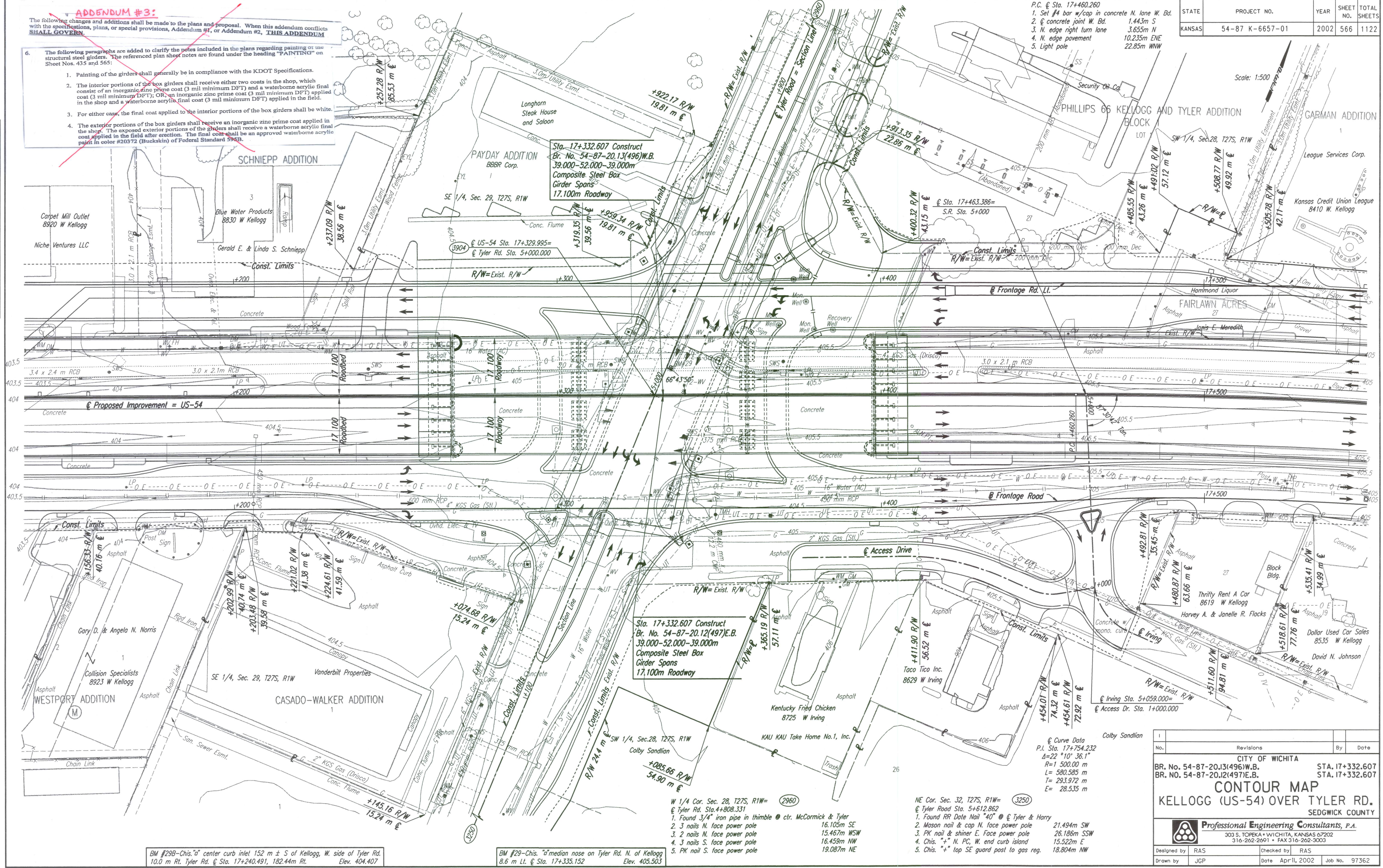
The following changes and additions shall be made to the plans and proposal. When this addendum conflicts with the specifications, plans, or special provisions, Addendum #1, or Addendum #2, **THIS ADDENDUM SHALL GOVERN.**

6. The following paragraphs are added to clarify the notes included in the plans regarding PAINTING of new structural steel girders. The referenced plan sheet notes are found under the heading "PAINTING" on Sheet Nos. 435 and 565:

1. Painting of the girders shall generally be in compliance with the KDOT Specifications.
2. The interior portions of the box girders shall receive either two coats in the shop, which consist of an inorganic zinc prime coat (3 mil minimum DFT) and a waterborne acrylic final coat (3 mil minimum DFT); OR, an inorganic zinc prime coat (3 mil minimum DFT) applied in the shop and a waterborne acrylic final coat (3 mil minimum DFT) applied in the field.
3. For either case, the final coat applied to the interior portions of the box girders shall be white.
4. The exterior portions of the box girders shall receive an inorganic zinc prime coat applied in the shop. The exposed exterior portions of the girders shall receive a waterborne acrylic final coat applied in the field after erection. The final coat shall be an approved waterborne acrylic paint in color #20372 (Buckskin) of Federal Standard 595B.

DATE	
BY	
REFERENCES NOTED	
REFERENCES CHECKED	

STATE	PROJECT NO.	YEAR	SHEET NO.	TOTAL SHEETS
KANSAS	54-87 K-6657-01	2002	566	1122



- P.C. @ Sta. 17+460.260
1. Set #4 bar w/cap in concrete N. lane W. Bd. 1.443m S
  2. @ concrete joint W. Bd. 3.655m N
  3. N. edge right turn lane 10.235m ENE
  4. N. edge pavement 22.85m WNW
  5. Light pole

Sta. 17+332.607 Construct  
Br. No. 54-87-20.13(496)W.B.  
39.000-52.000-39.000m  
Composite Steel Box  
Girder Spans  
17.100m Roadway

Sta. 17+332.607 Construct  
Br. No. 54-87-20.12(497)E.B.  
39.000-52.000-39.000m  
Composite Steel Box  
Girder Spans  
17.100m Roadway

Curve Data  
P.I. Sta. 17+754.232  
Δ=22°10'36.1"  
R=1500.00 m  
L=580.585 m  
T=293.972 m  
E=28.535 m

BM #29B-Chis. "a" center curb inlet 152 m ± S of Kellogg, W. side of Tyler Rd. 10.0 m Rt. Tyler Rd. @ Sta. 17+240.491, 182.44m Rt. Elev. 404.407

BM #29-Chis. "d" median nose on Tyler Rd. N. of Kellogg 8.6 m Lt. @ Sta. 17+335.152 Elev. 405.503

- W 1/4 Cor. Sec. 28, T27S, R1W= (2960)  
@ Tyler Rd. Sta. 4+808.331
1. Found 3/4" iron pipe in thimble @ ctr. McCormick & Tyler 16.105m SE
  2. 3 nails N. face power pole 15.467m WSW
  3. 2 nails N. face power pole 15.522m E
  4. 3 nails S. face power pole 19.087m NE
  5. PK nail S. face power pole

- NE Cor. Sec. 32, T27S, R1W= (3250)  
@ Tyler Road Sta. 5+612.862
1. Found RR Date Nail "40" @ @ Tyler & Harry 21.494m SW
  2. Mason nail & cap N. face power pole 26.186m SSW
  3. PK nail & shiner E. face power pole 15.522m E
  4. Chis. "+ N. PC, W. end curb island 18.804m NW
  5. Chis. "+ top SE guard post to gas reg.

Revisions		By	Date
No.			

CITY OF WICHITA  
BR. No. 54-87-20.13(496)W.B. STA. 17+332.607  
BR. No. 54-87-20.12(497)E.B. STA. 17+332.607

**CONTOUR MAP**  
KELLOGG (US-54) OVER TYLER RD.  
SEDGWICK COUNTY

Professional Engineering Consultants, P.A.  
303 S. TOPEKA • WICHITA, KANSAS 67202  
316-262-2691 • FAX 316-262-3003

Designed by RAS  
Checked by RAS  
Drawn by JGP  
Date April, 2002  
Job No. 97362

DSNR: RAS OPER: JGP SCALE: 1:500  
 1/1997/97362/BRIDGE/TYLERRD/TLRCON.DGN 10-29-1999 8:33:10 LAST REV: 3-25-2002 BY: ros