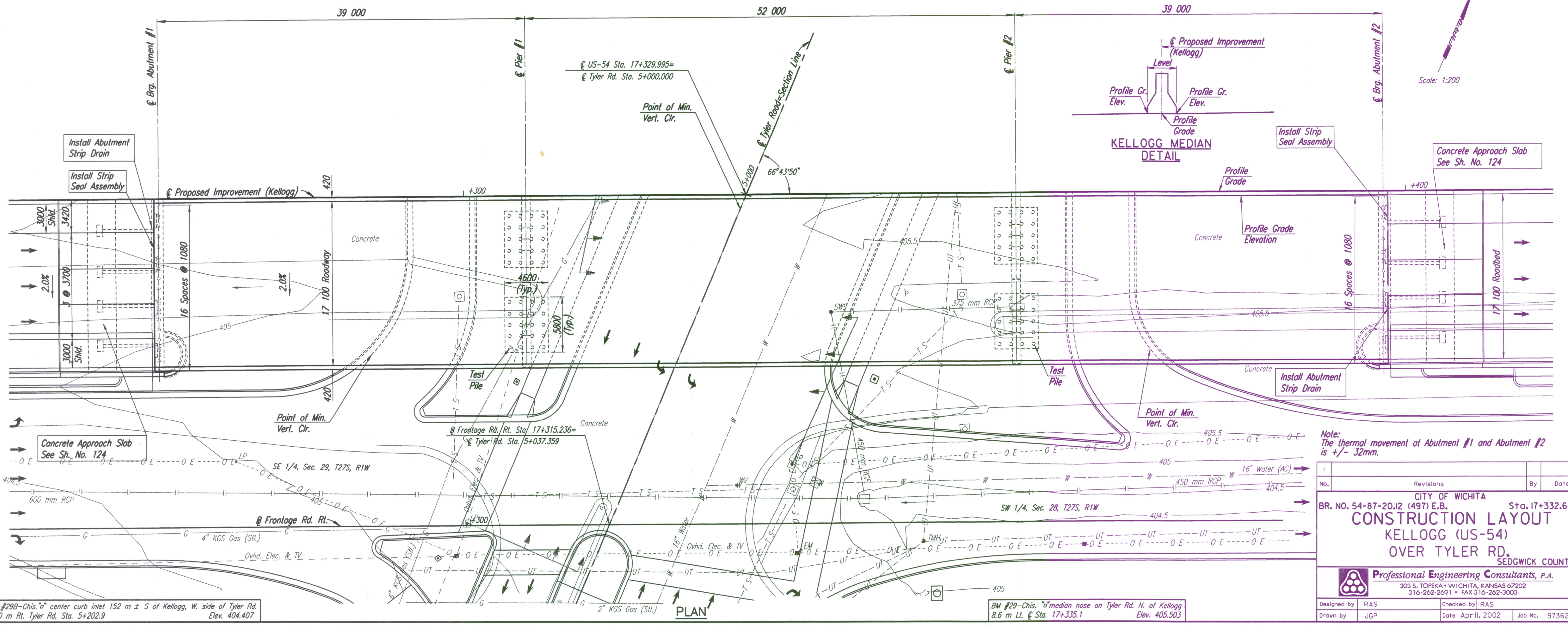
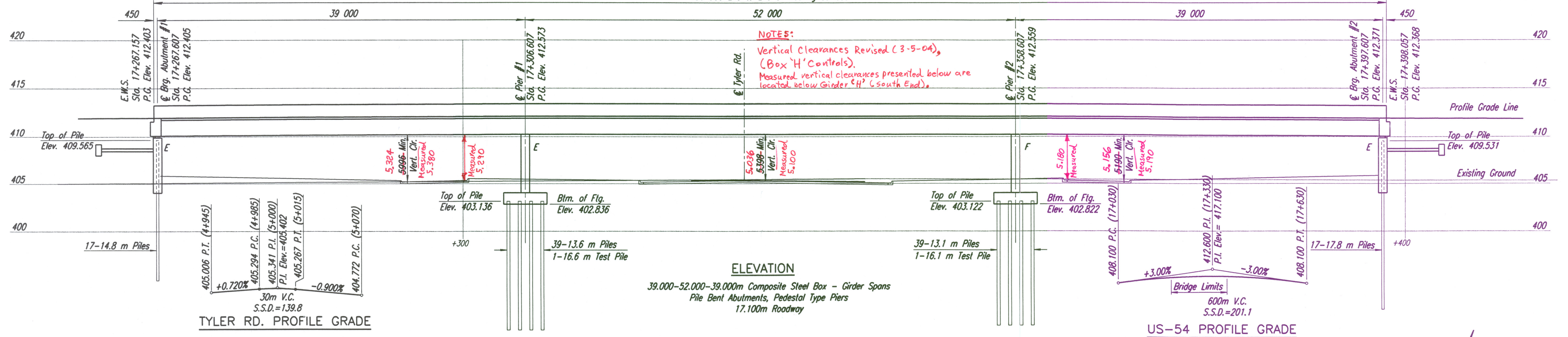


STATE	PROJECT NO.	YEAR	SHEET NO.	TOTAL SHEETS
KANSAS	54-87-K-6657-01	2002	569	1122

130 900 End to End of Wearing Surface



Note:
The thermal movement at Abutment #1 and Abutment #2
is +/- 32mm.

No.	Revisions	By	Date

CITY OF WICHITA
BR. NO. 54-87-2012 (497) E.B. Sta. 17+332.607
CONSTRUCTION LAYOUT
KELLOGG (US-54)
OVER TYLER RD.
SEDGWICK COUNTY

Professional Engineering Consultants, P.A.
303 S. TOPEKA • WICHITA, KANSAS 67202
316-262-2691 • FAX 316-262-3003

Designed by RAS
Checked by RAS
Drawn by JGP
Date April, 2002
Job No. 97362

DATE	
BY	
REFERENCES NOTED	
REFERENCES CHECKED	

DSNR: RAS OPER: JGP SCALE: 1:200
1/1997/97362/BRIDGE/TYLERRD/TYLERD.DGN 11-01-1999 7:05:37 LAST REV: 3-22-2002 BY: drp

BM #29B-Chis. "a" center curb inlet 152 m ± S of Kellogg, W. side of Tyler Rd.
10.0 m Rt. Tyler Rd. Sta. 5+202.9 Elev. 404.407

BM #29-Chis. "a" median nose on Tyler Rd. N. of Kellogg
8.6 m Lt. @ Sta. 17+335.1 Elev. 405.503