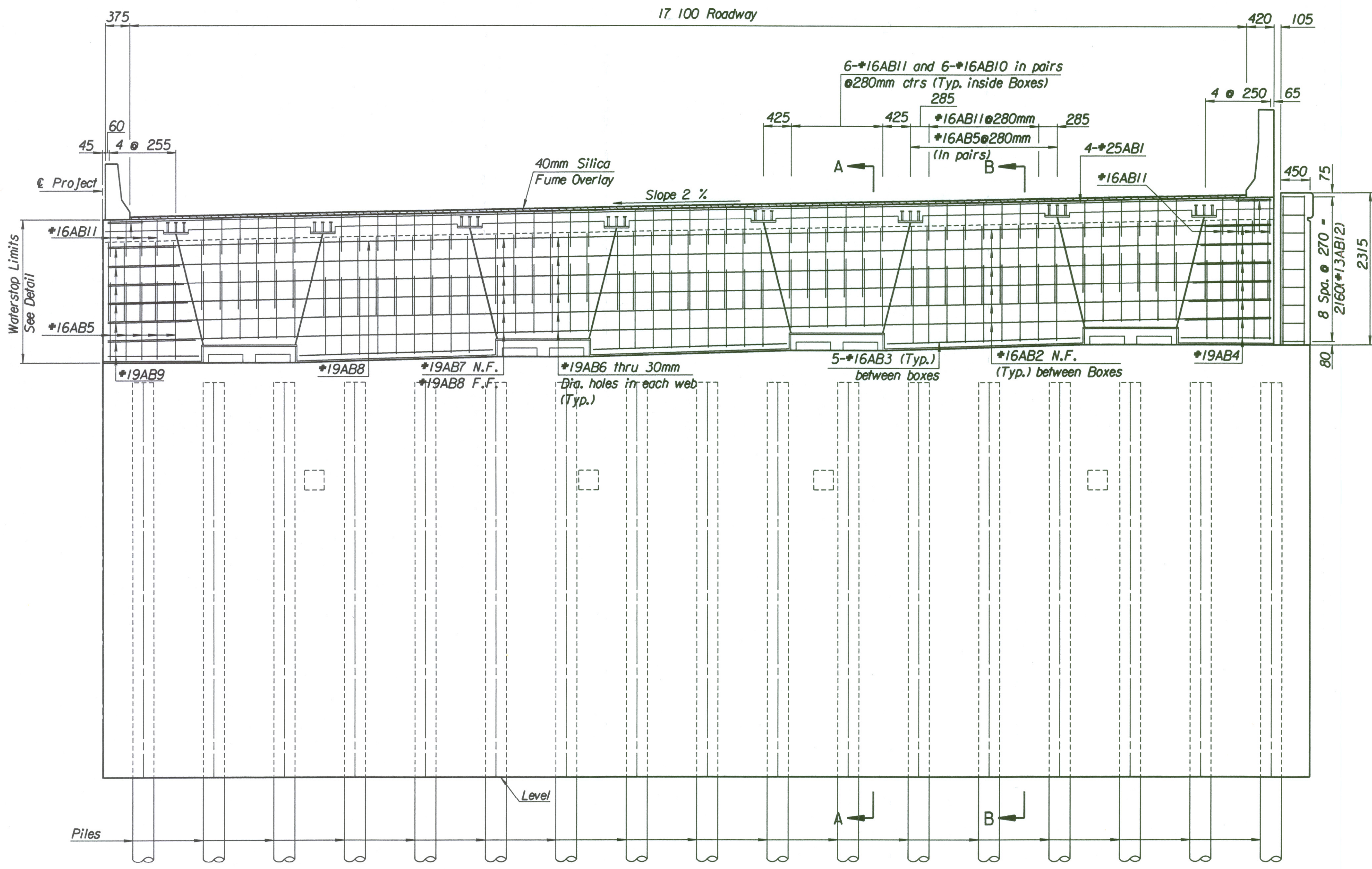
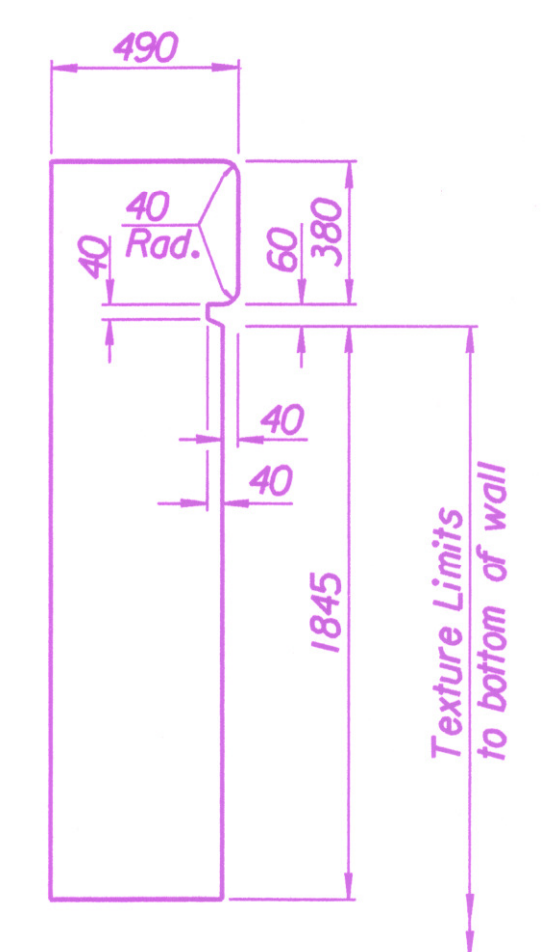
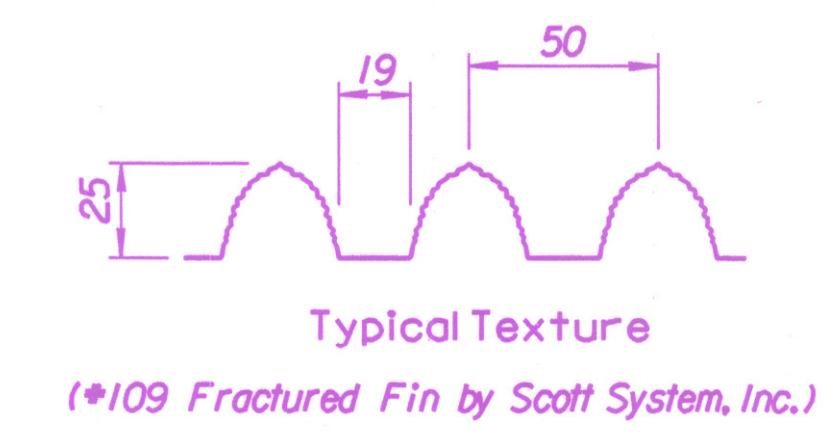


STATE	PROJECT NO.	YEAR	SHEET NO.	TOTAL SHEETS
KANSAS	54-87 K-6657-01	2002	573	1122



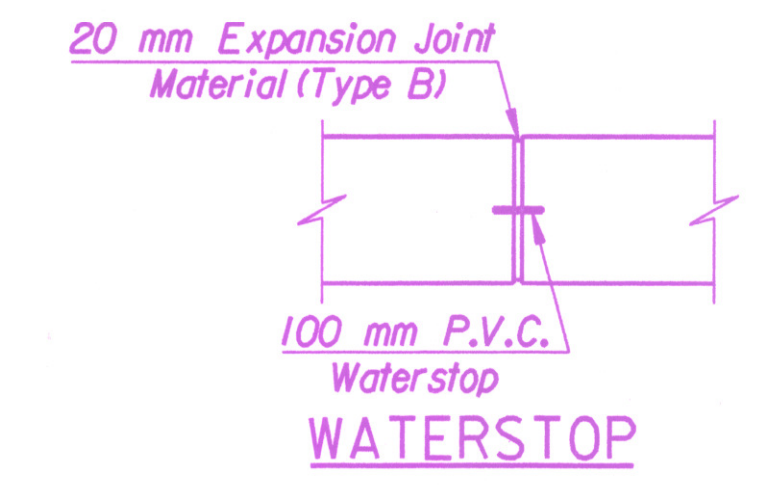
ELEVATION

Abutment No. 1 shown looking backstation
Abutment No. 2 similar mirrored about ϵ Brg.

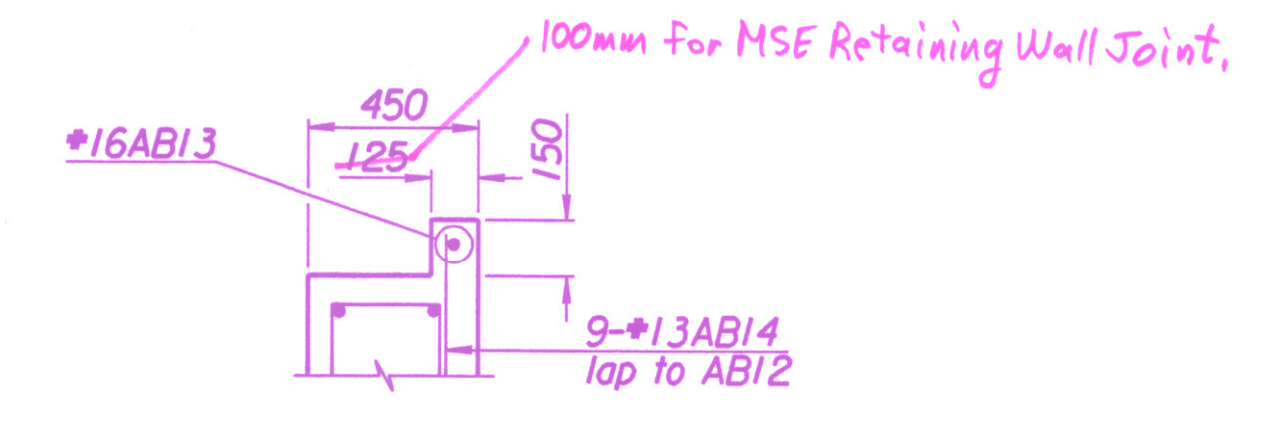


SUPERSTRUCTURE DETAIL A

LEGEND:
N.F. = Near Face
F.F. = Far Face
E.F. = Each Face

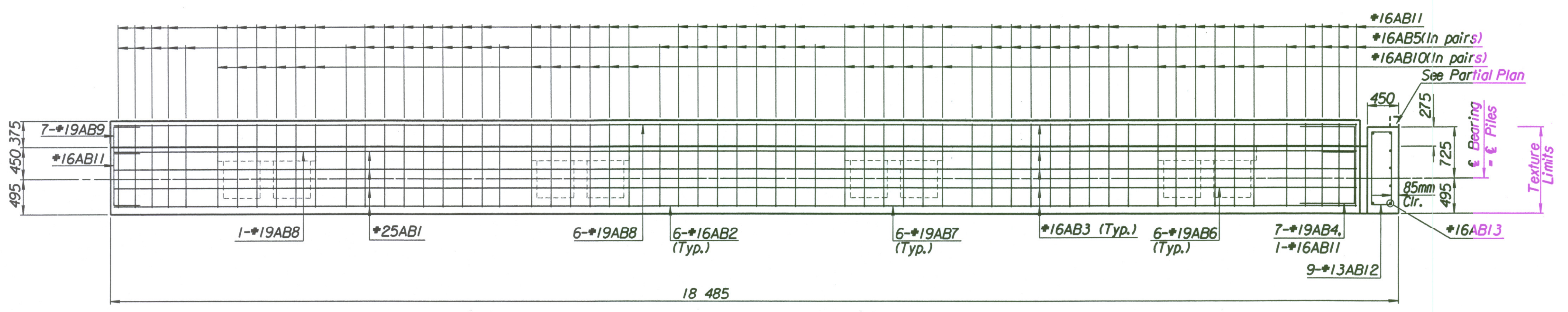


WATERSTOP



PARTIAL PLAN

This detail complies with the Alt. No. 2.
NOTE: For Alt. No. 1 detail see plan this sheet.
Additional reinforcing required for Alt. No. 2 bid is 1-#16AB13 and 9-#13AB14. Additional concrete and reinforcing are considered subsidiary.



PLAN

Drawn By: ras
 Plotted By: svb 3-26-2002
 I:/1997/97362/001/bridge/tylerrd/abut1wb.dgn

No.	Revisions	By	Date
CITY OF WICHITA BR. NO. 54-87-20.13(496) W.B. STA. 17+332.607			
KELLOGG OVER TYLER ROAD ABUTMENT DETAILS			
SEDGWICK COUNTY			
Professional Engineering Consultants, P.A. 303 S. TOPEKA - WICHITA, KANSAS 67202 316-262-2691 • FAX 316-262-3003			
Designed by	RAS	Checked by	RAS
Drawn by	RAS	Date	Apr-11, 2002 Job No. 97362