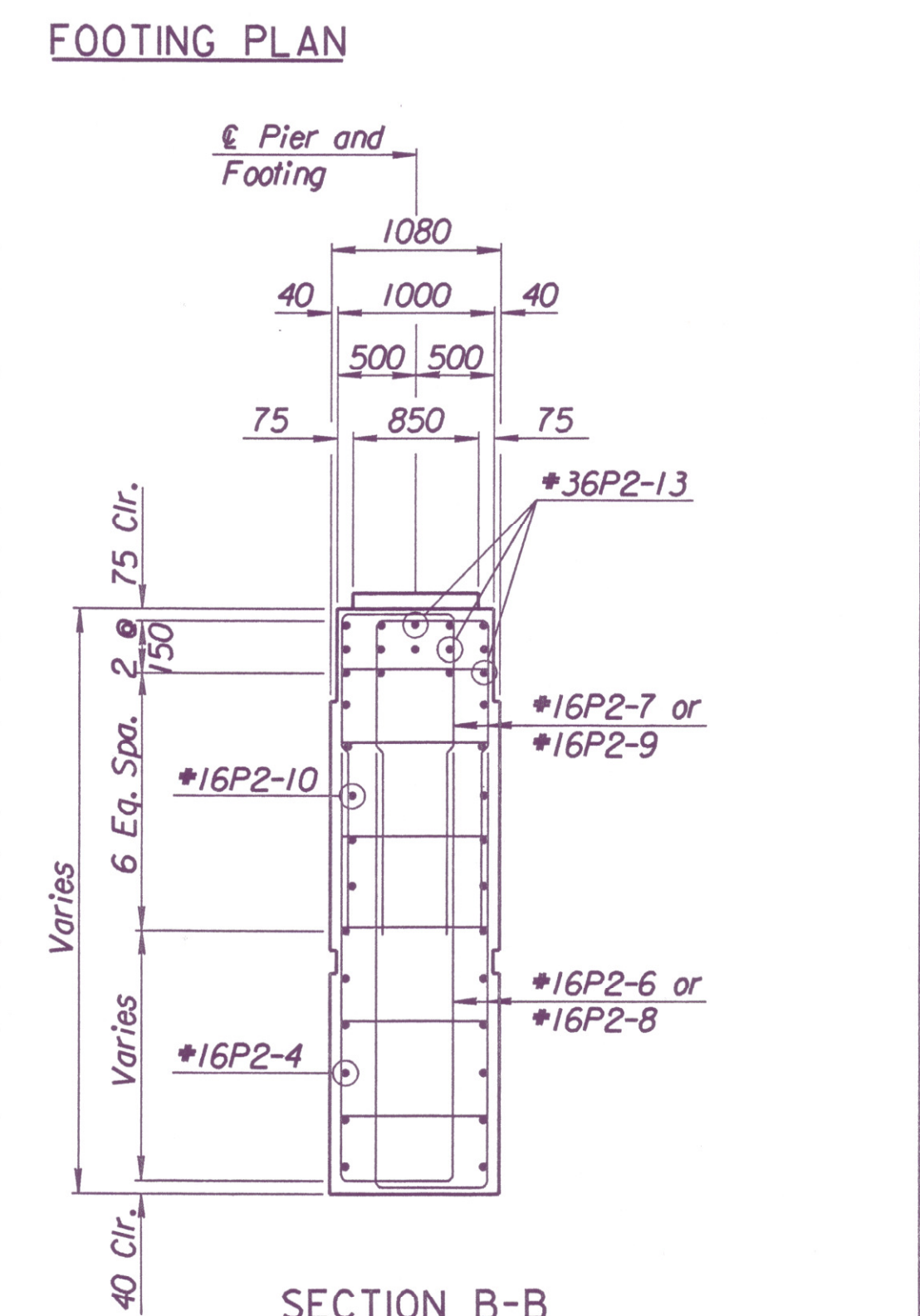
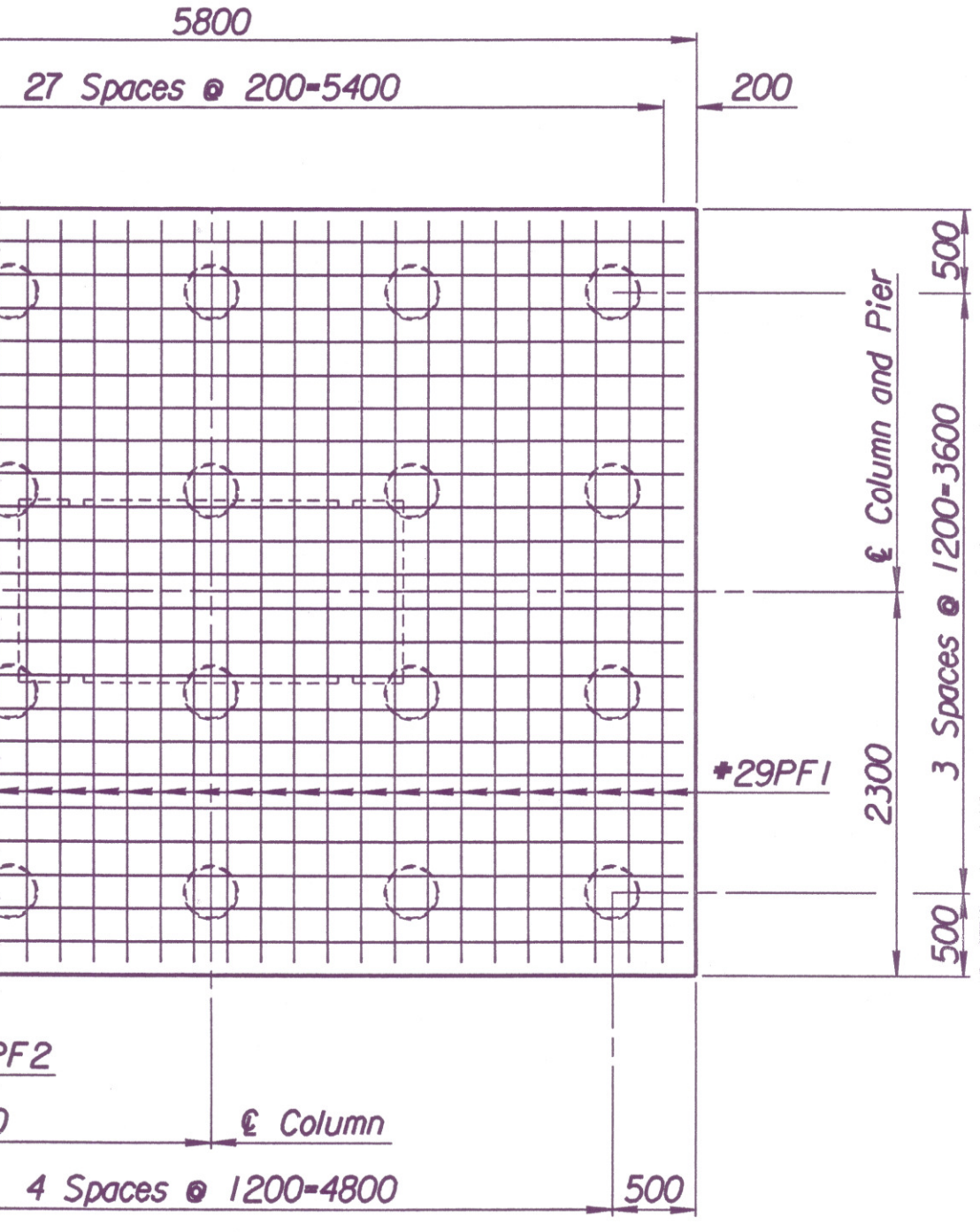
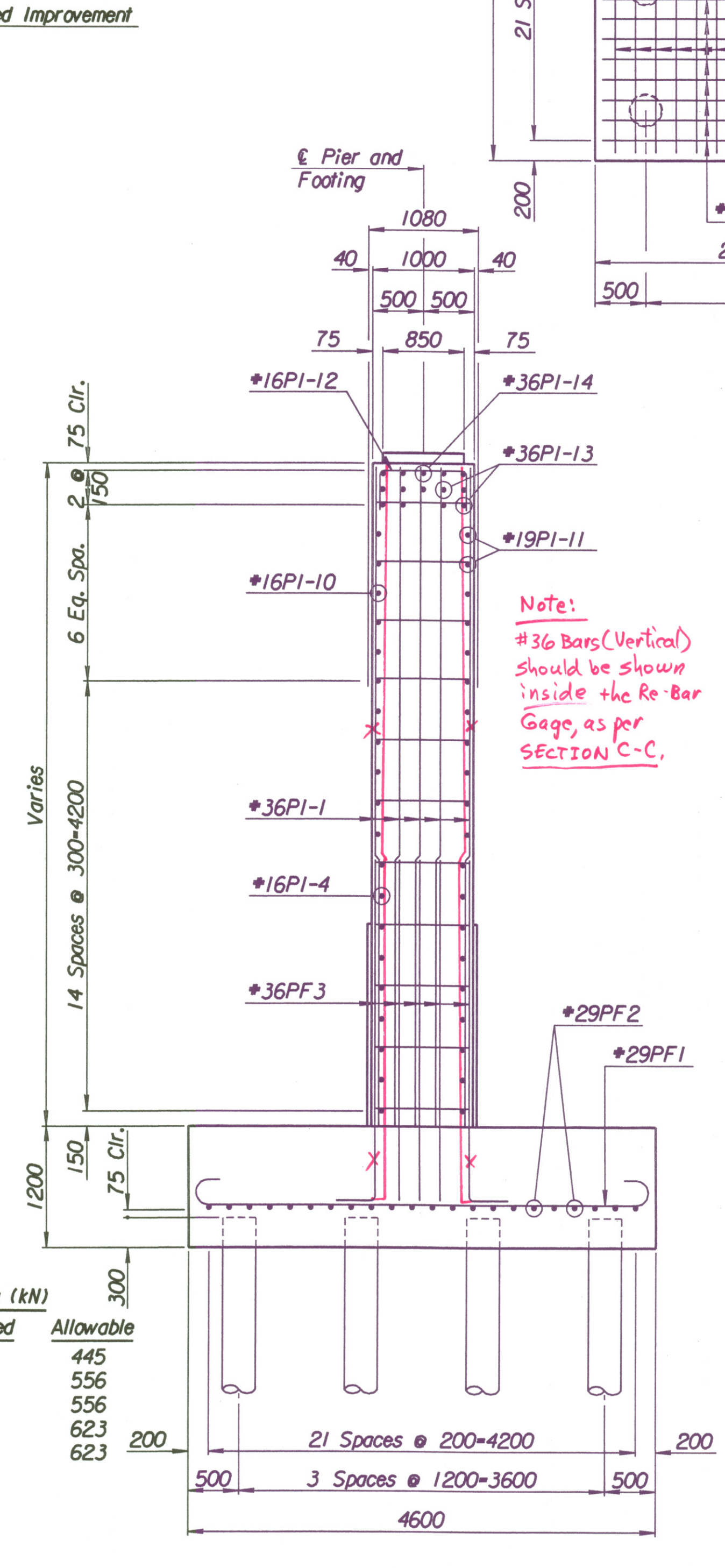
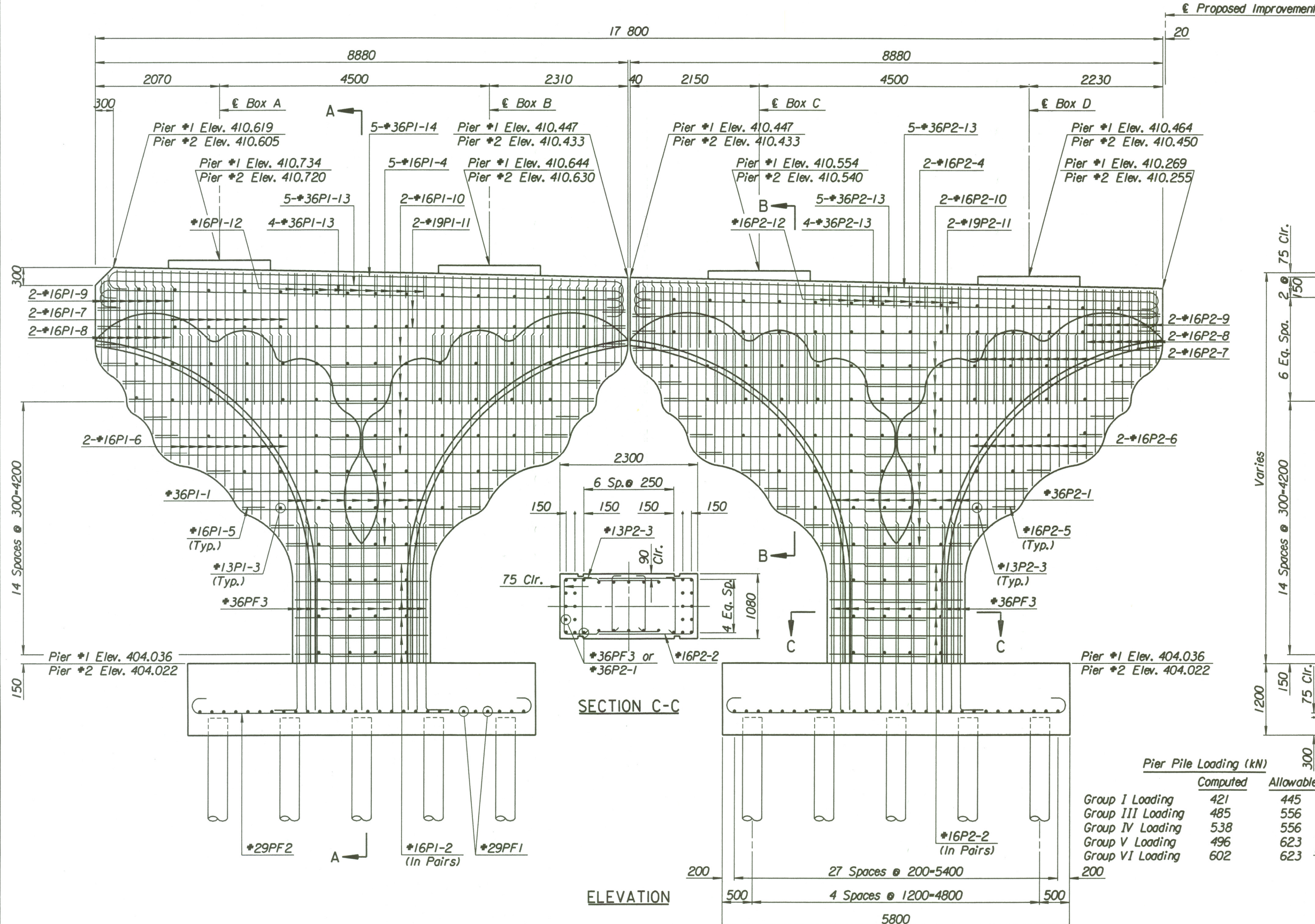
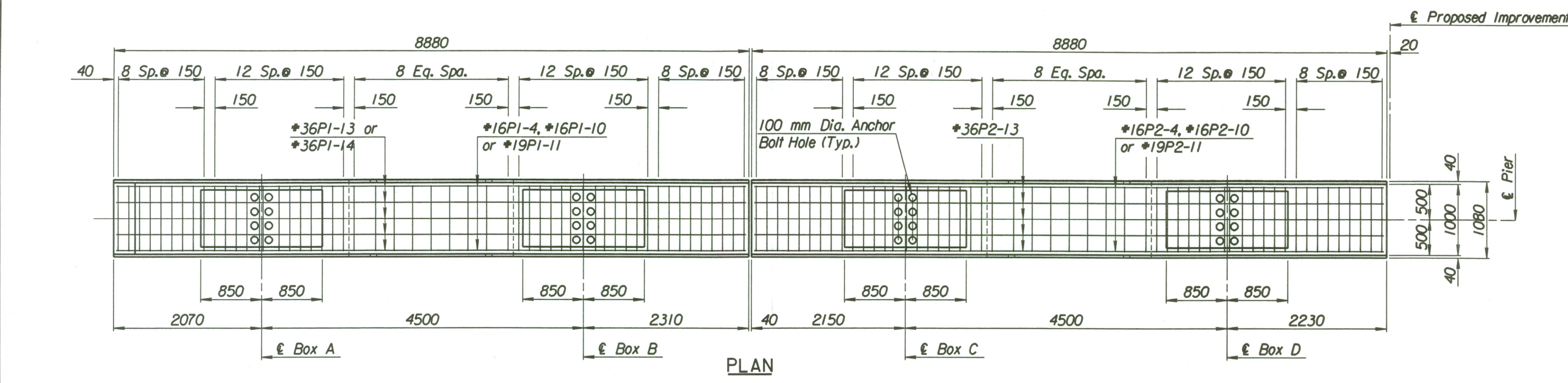


STATE	PROJECT NO.	YEAR	SHEET NO.	TOTAL SHEETS
KANSAS	54-87 K-6657-01	2002	584	1122



Pier Pile Loading (kN)

	Computed	Allowable
Group I Loading	421	445
Group III Loading	485	556
Group IV Loading	538	556
Group V Loading	496	623
Group VI Loading	602	623

Drawn by: wll
 Plotted by: wll 3-26-2002
 i:\1997\97362\001\bridge\tyler rd\pier

1			
No.	Revisions	By	Date
CITY OF WICHITA			
BR. NO. 54-87-20.13 (496) W.B.		STA. 17+332.607	
PIER DETAILS			
KELLOGG (US-54)			
OVER TYLER ROAD			
SEDGWICK COUNTY			
Professional Engineering Consultants, P.A.			
303 S. TOPEKA • WICHITA, KANSAS 67202			
316-262-2691 • FAX 316-262-3003			
Designed by	P.D.F.	Checked by	R.A.S.
Drawn by	W.L.L.	Date	April, 2002
		Job No.	97362