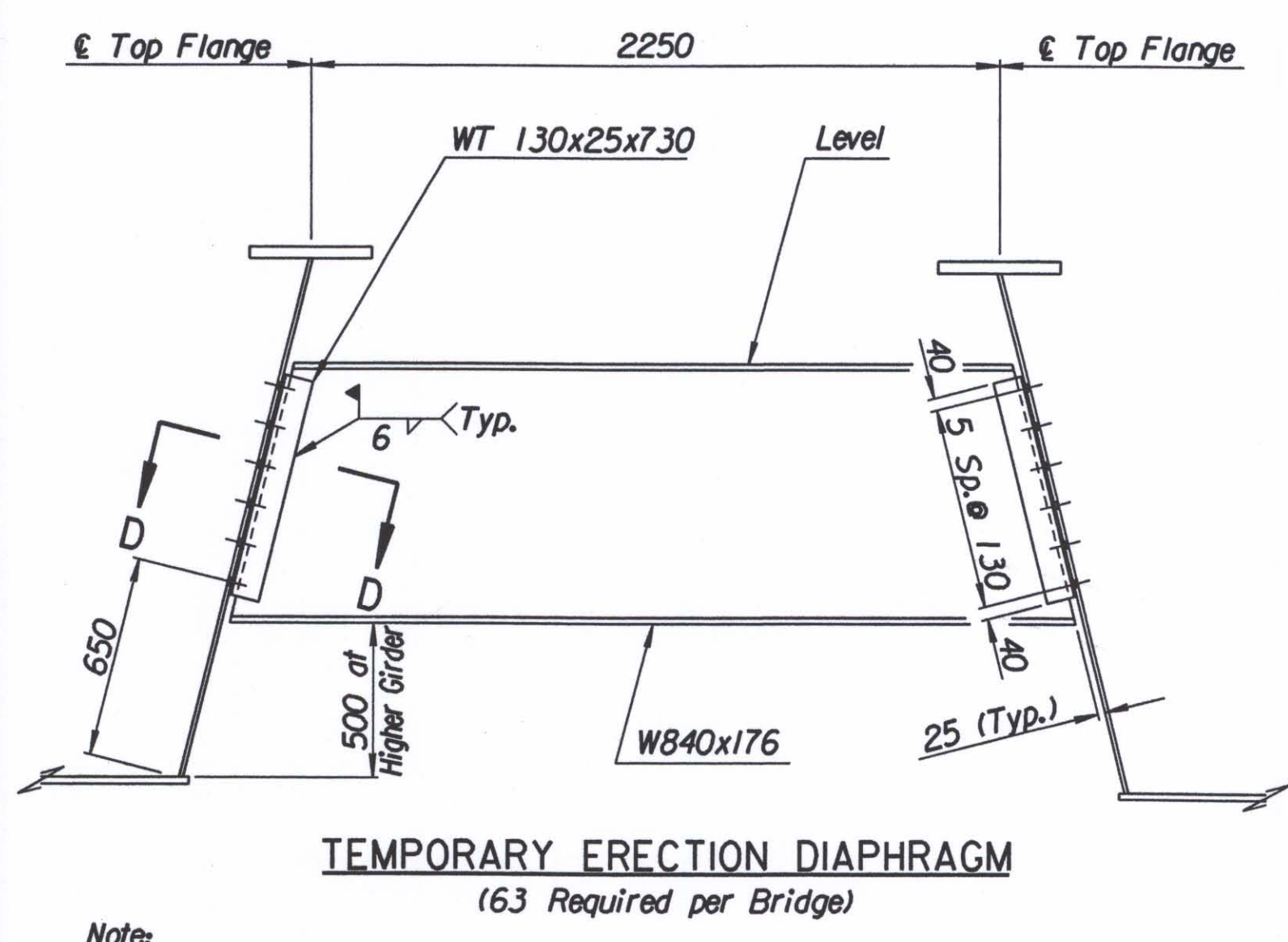
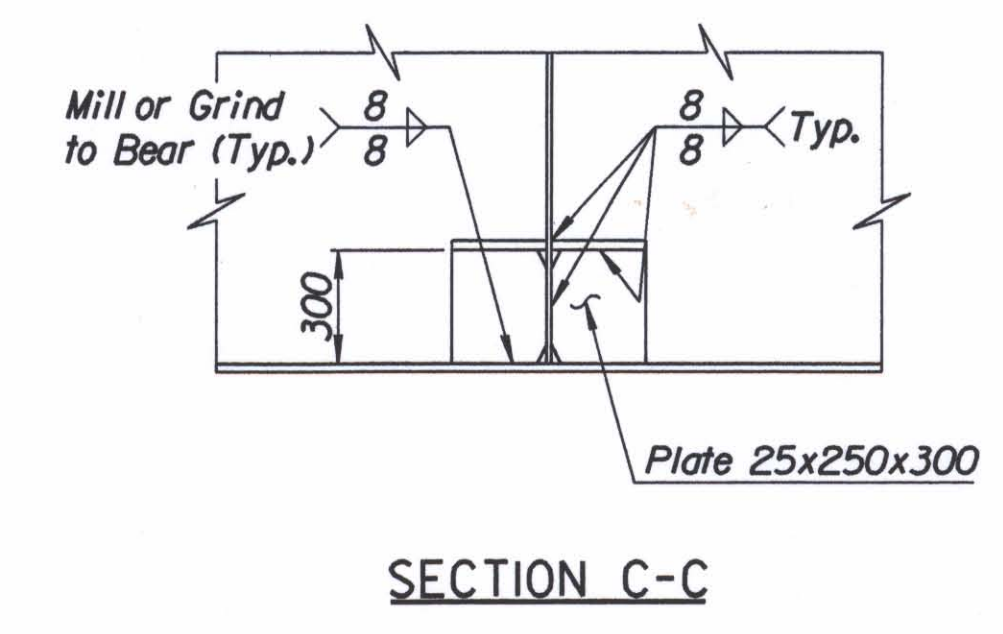
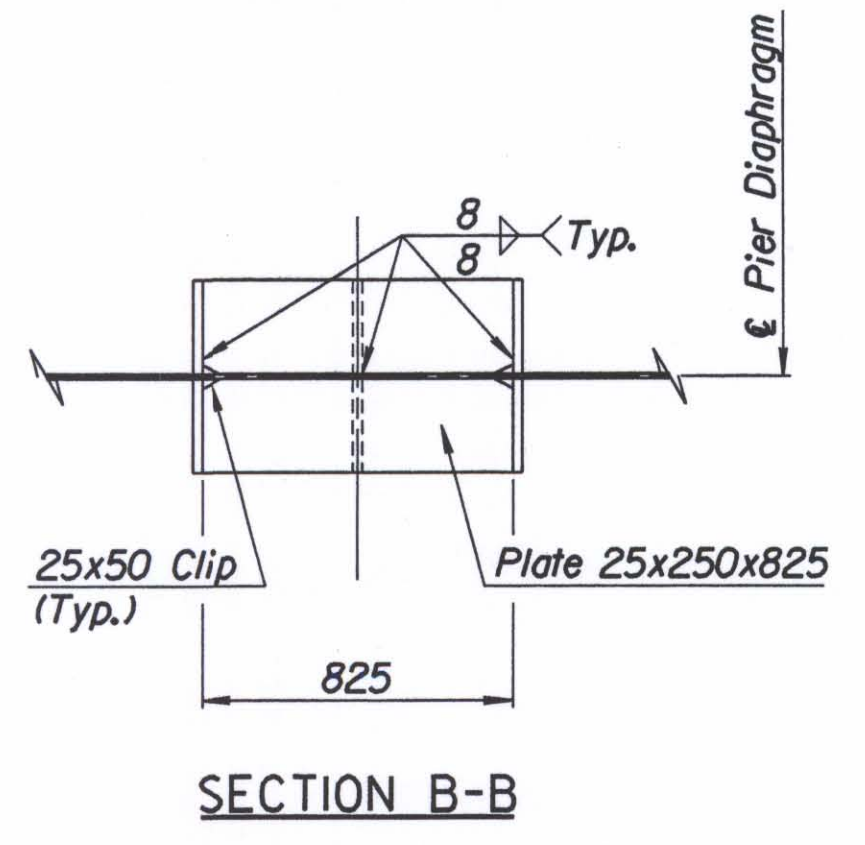
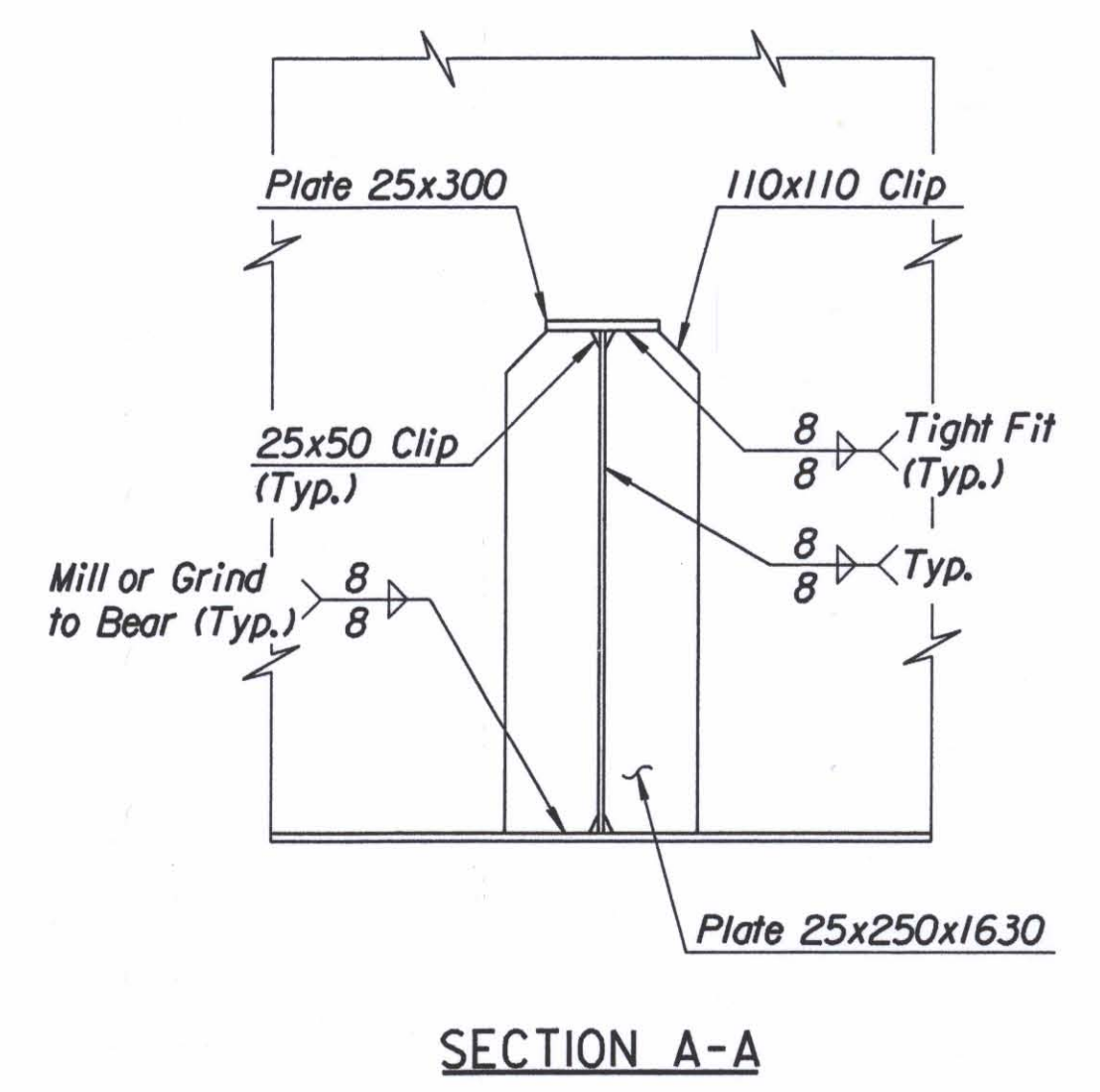
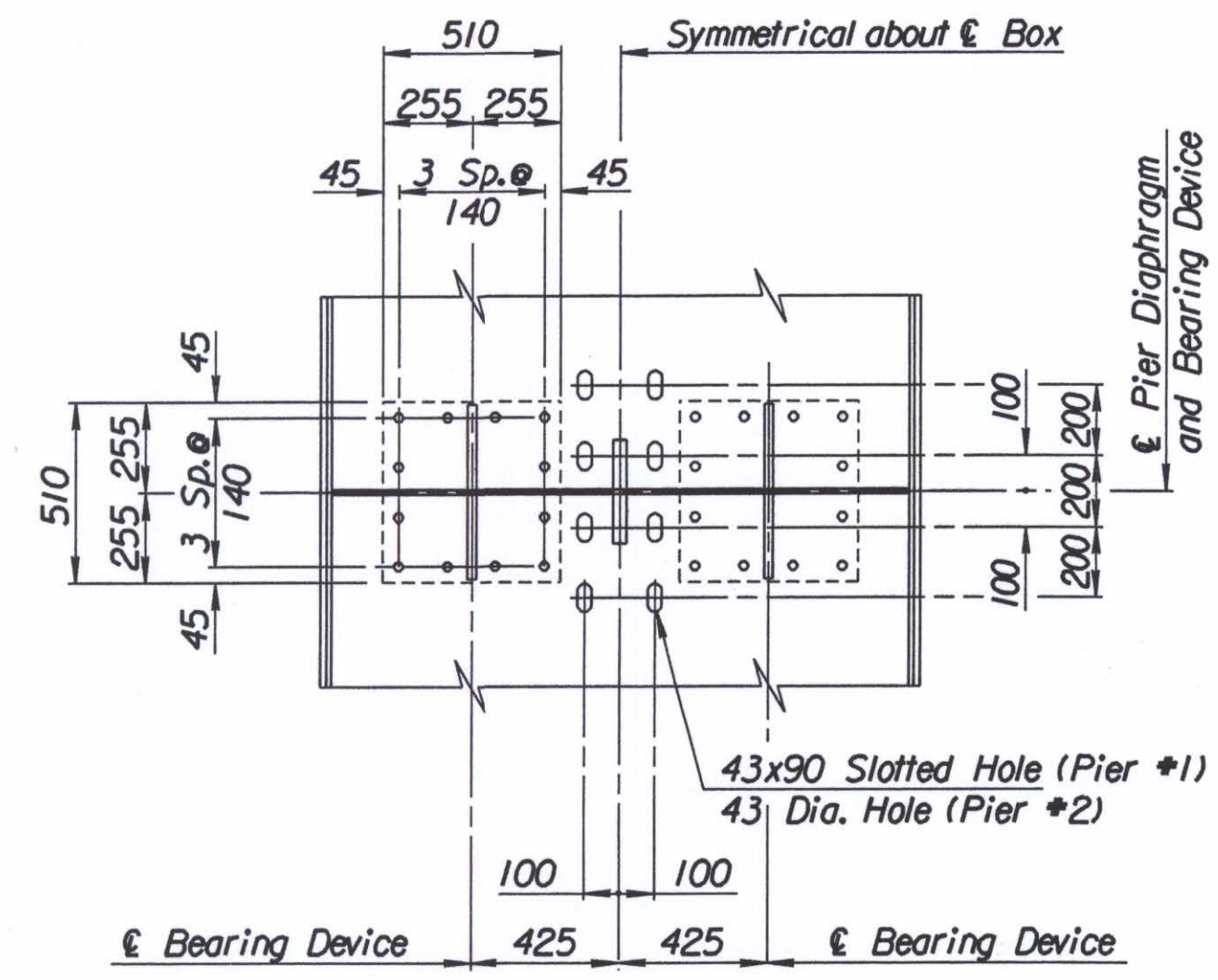
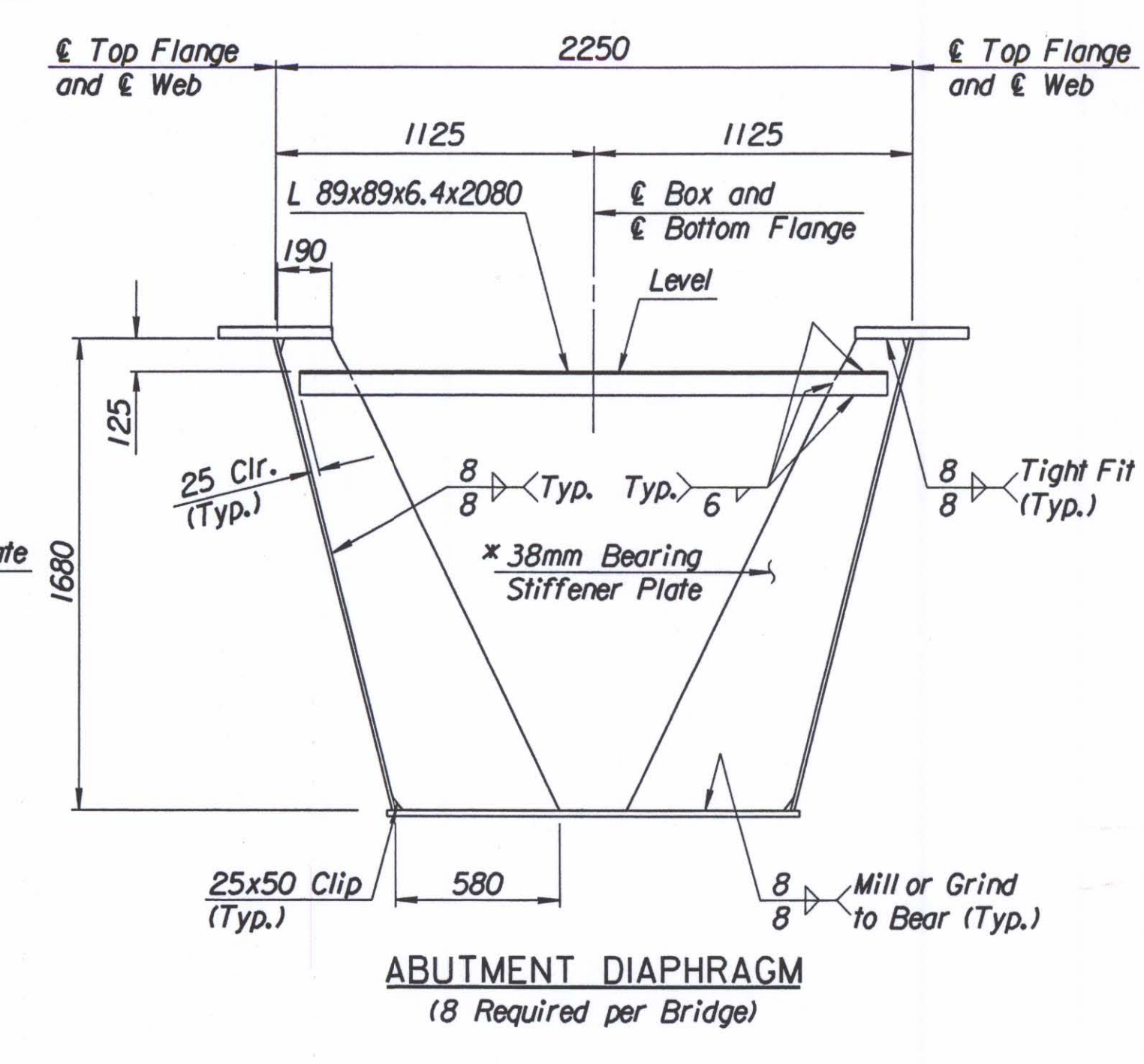
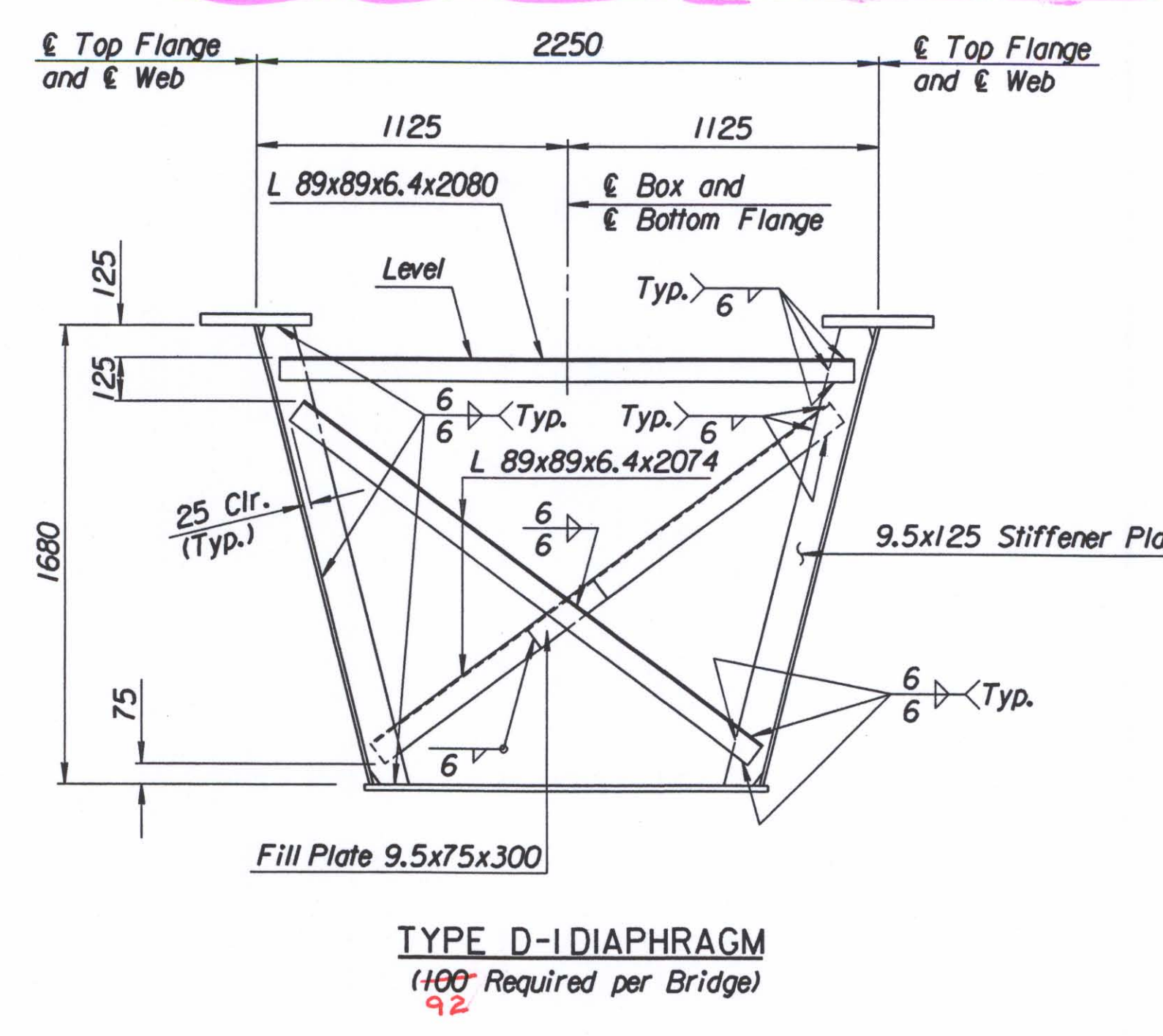
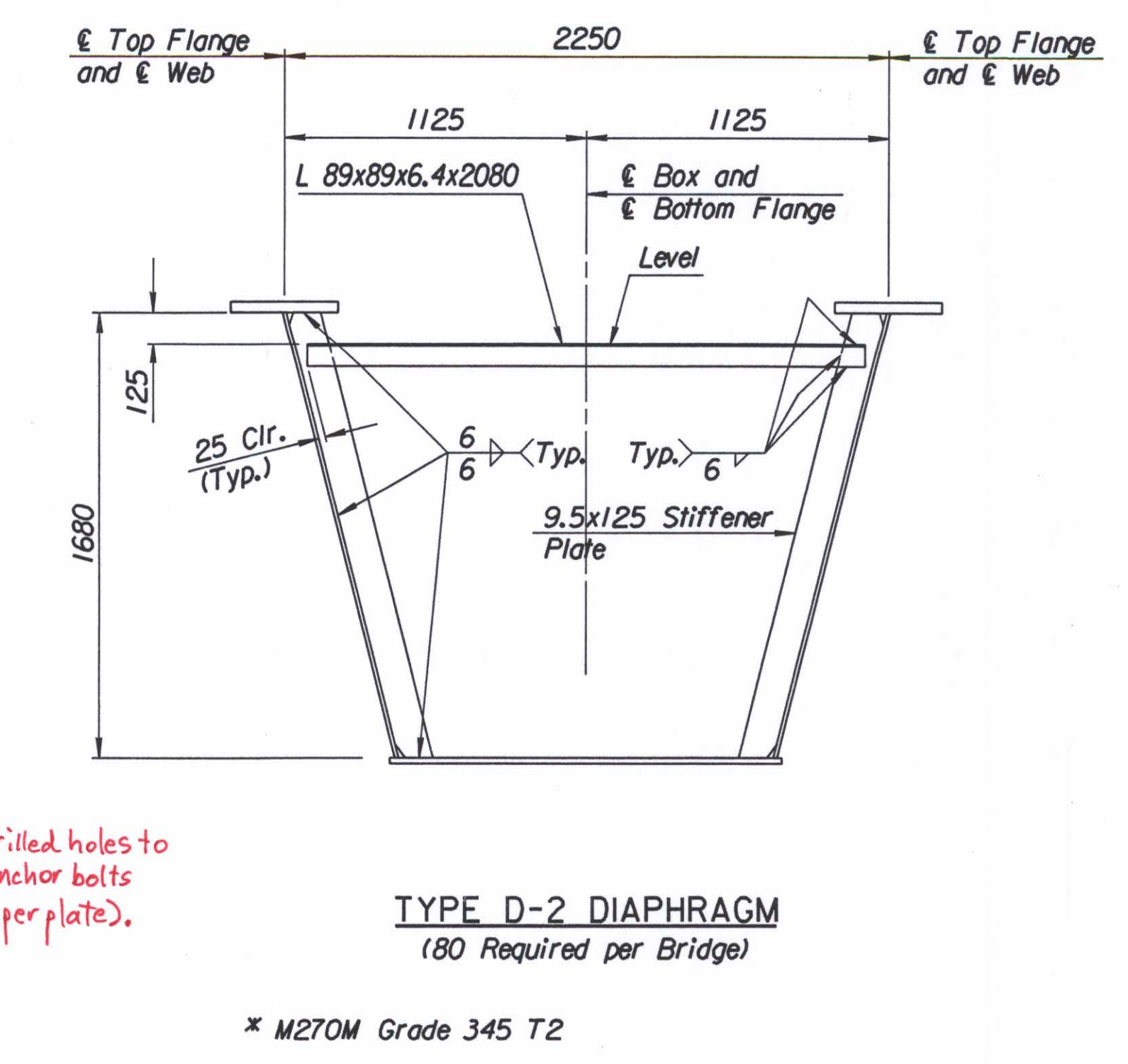
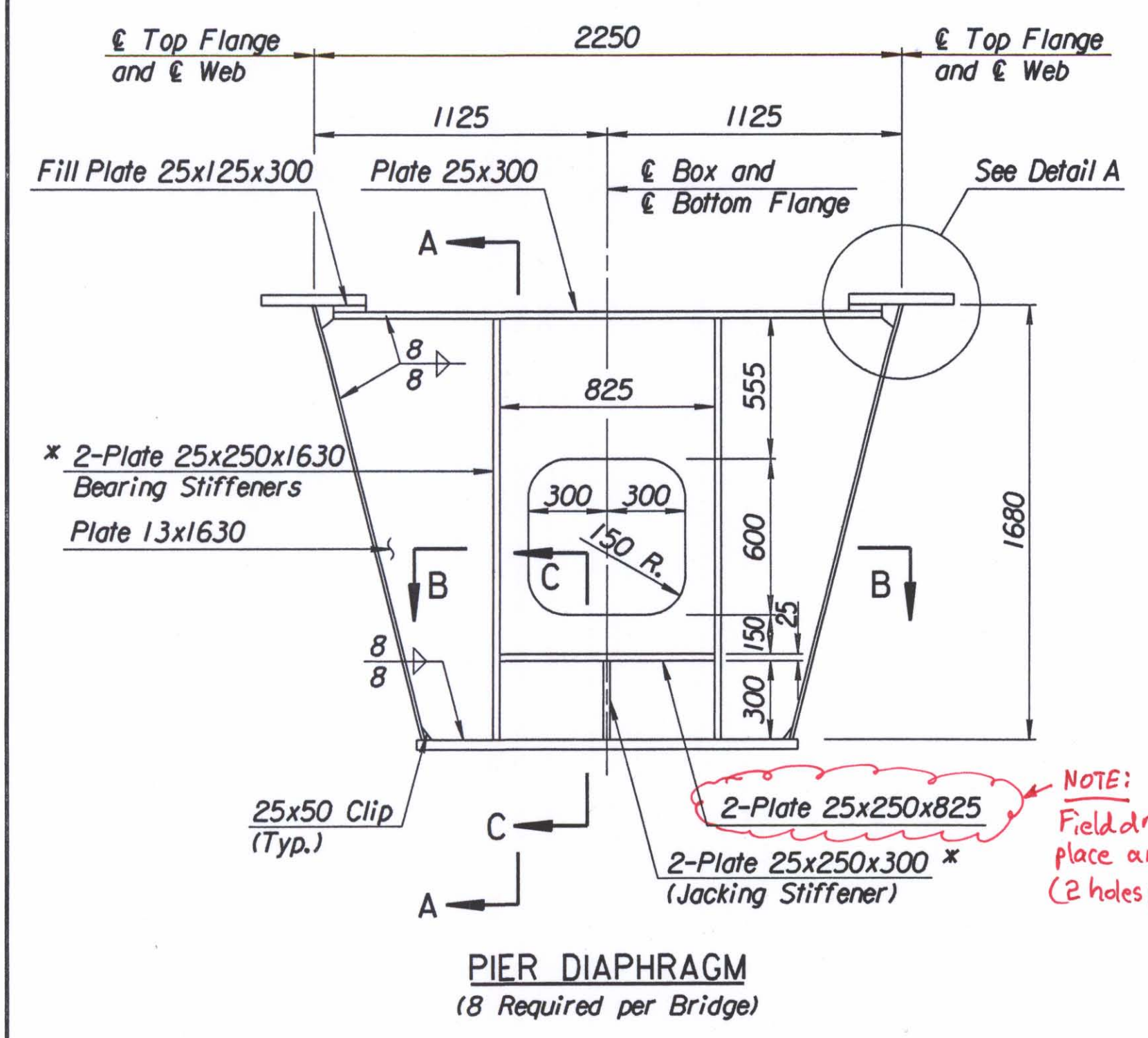


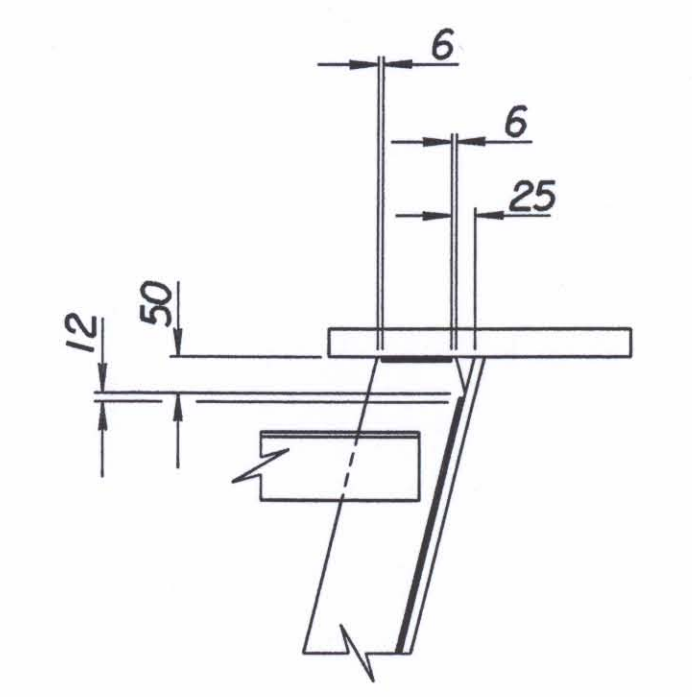
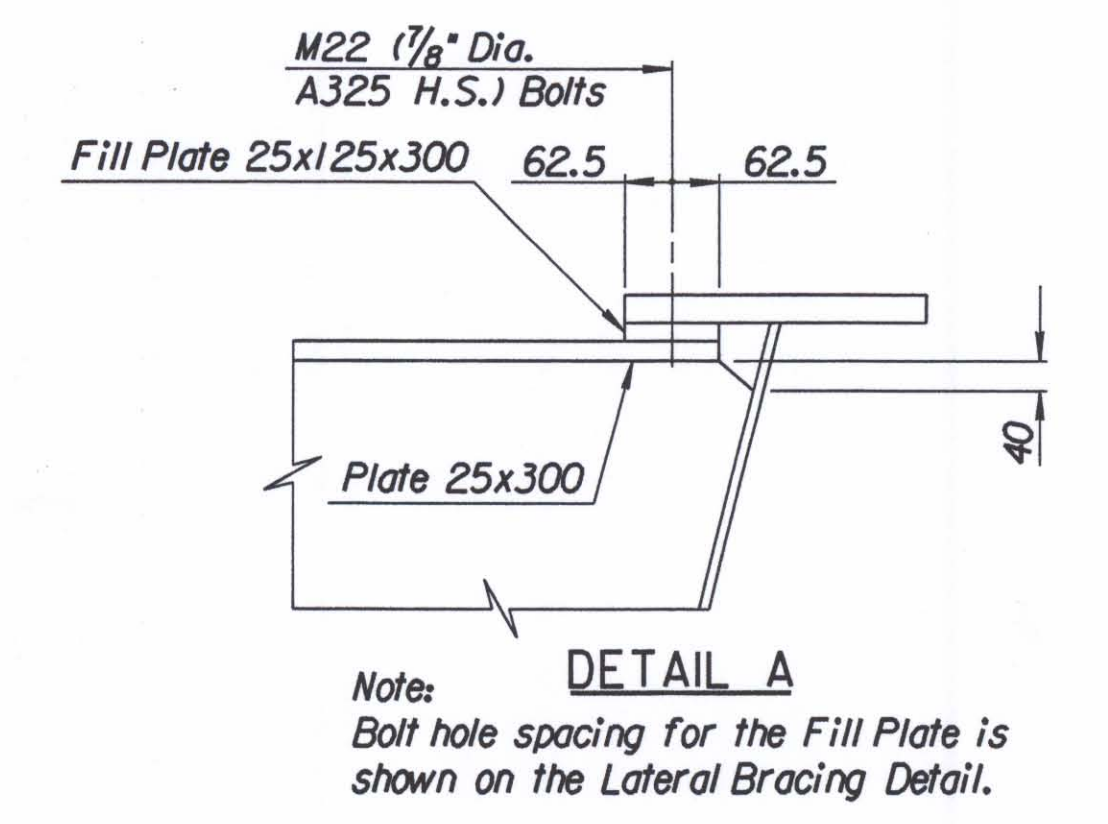
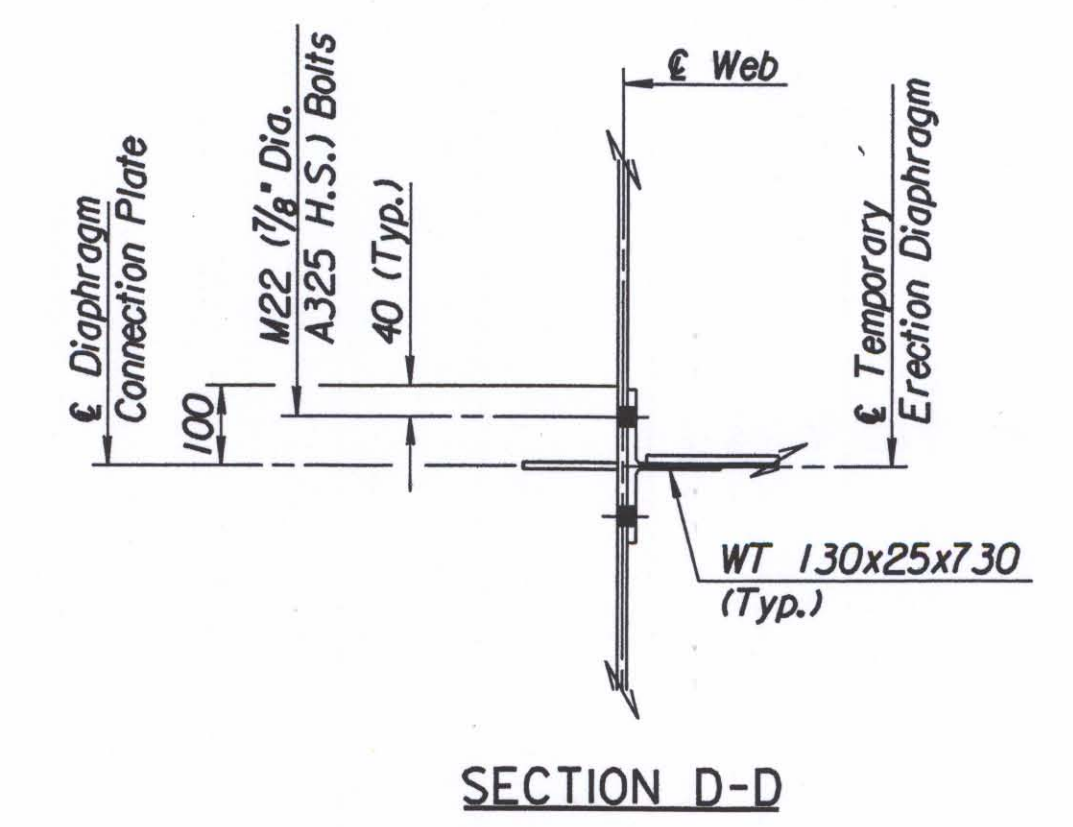
**ADDENDUM #2:**

Sheet 590  
1. Revise the Detail for TYPE D-1 DIAPHRAGM (100 Required per Bridge) to read (92 Required per Bridge).

STATE	PROJECT NO.	YEAR	SHEET NO.	TOTAL SHEETS
KANSAS	54-87 K-6657-01	2002	590	1122



Note: The Temporary Erection Diaphragms shall be in place during placement and curing of the deck, after which they shall be removed with the exception of the M22 H.S. Bolts through the Web, which shall be reinserted in the holes and tightened. Temporary Erection Diaphragms, WT Shapes and Bolts shall not be paid for directly, but shall be subsidiary to the bid item "Structural Steel A709M (Gr. 250)". After the removal they shall become the property of the Contractor.



No.	Revisions	By	Date
CITY OF WICHITA BR. NO. 54-87-20.13 (496) W.B. STA. 17+332.607 BR. NO. 54-87-20.12 (497) E.B. STA. 17+332.607			
<b>DIAPHRAGM DETAILS</b> KELLOGG (US-54) OVER TYLER ROAD SEDGWICK COUNTY			
<b>Professional Engineering Consultants, P.A.</b> 303 S. TOPEKA • WICHITA, KANSAS 67202 316-262-2691 • FAX 316-262-3003			
Designed by	P.D.F.	Checked by	R.A.S.
Drawn by	W.L.L.	Date	April 2002 Job No. 97362

Drawn by: wll  
Plotted by: ras 3-26-2002  
i:\1997\97362\001\bridge\tyler\rd\diaphragm