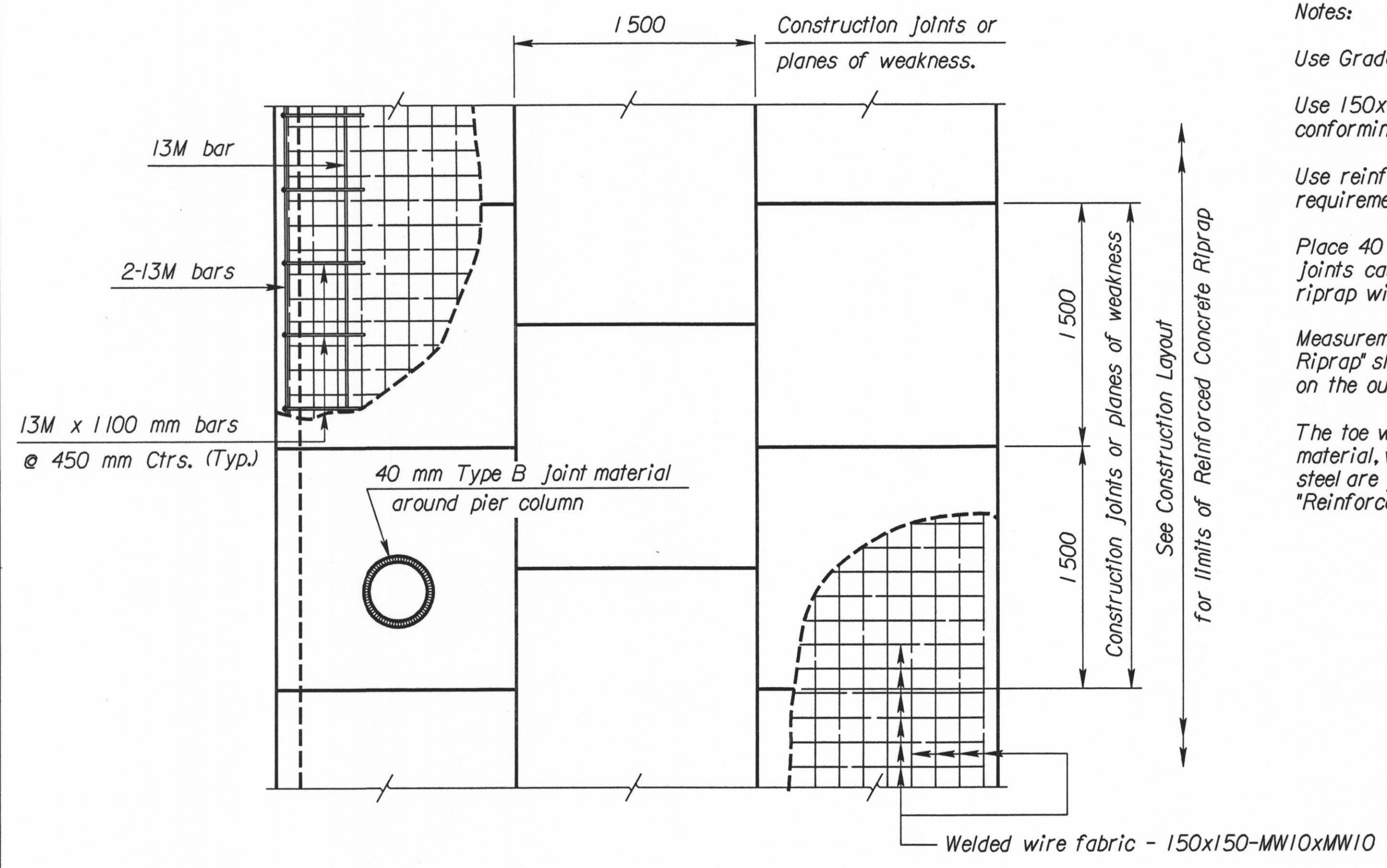
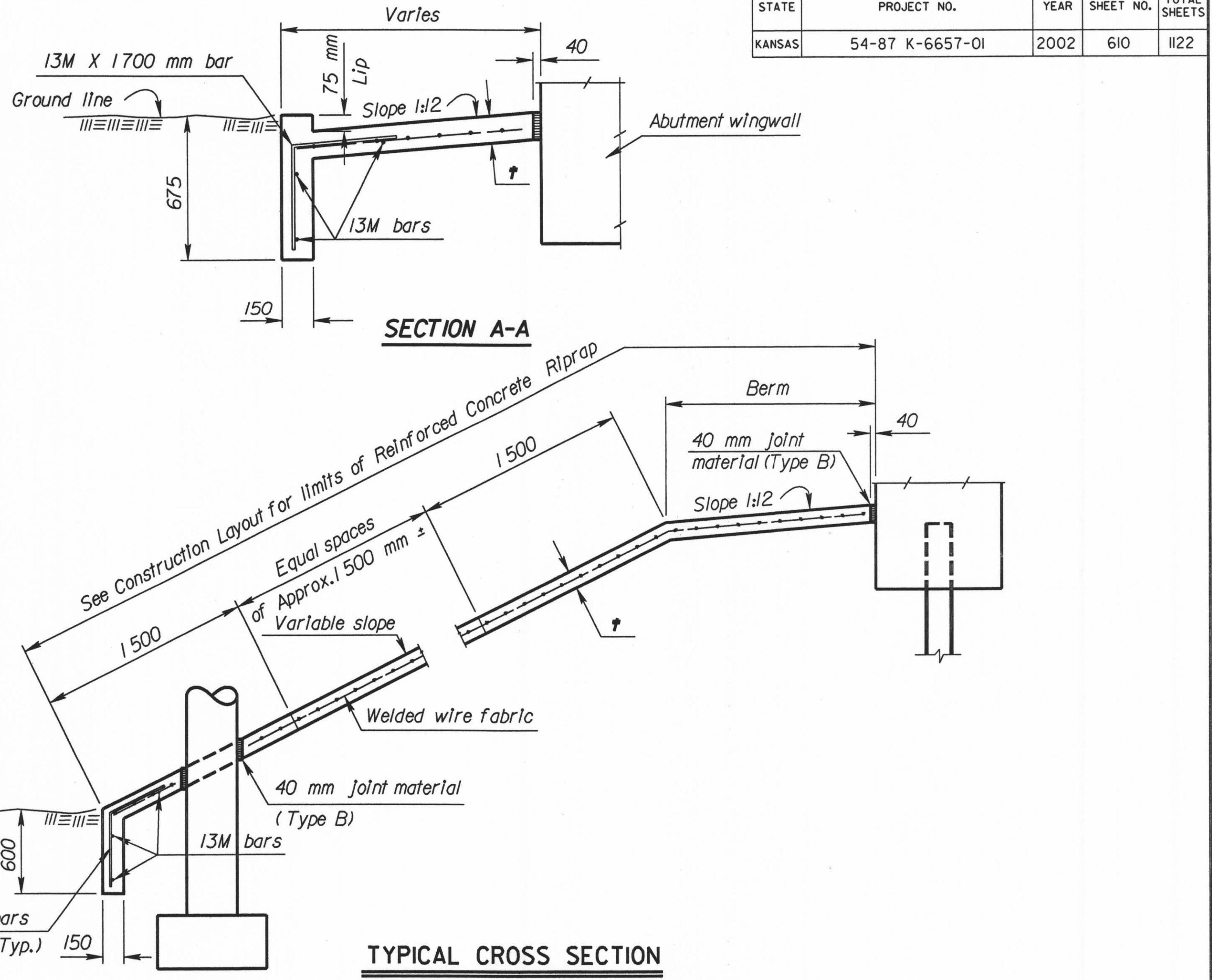


STATE	PROJECT NO.	YEAR	SHEET NO.	TOTAL SHEETS
KANSAS	54-87 K-6657-01	2002	610	1122



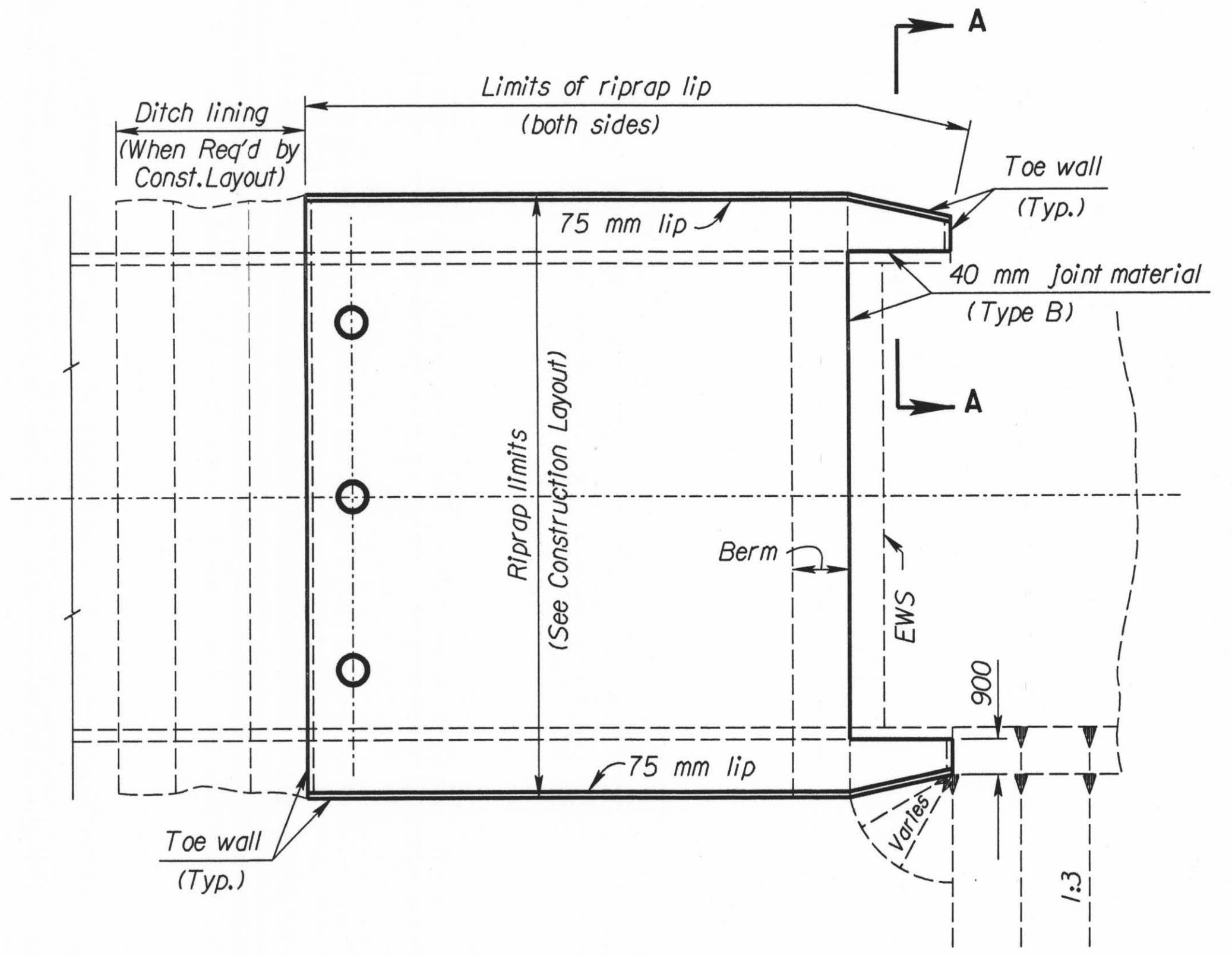
PLAN
(Showing Joint Layout)

Notes:
 Use Grade 25 concrete for the riprap.
 Use 150x150-MW10xMW10 welded wire fabric conforming to the requirements of ASTM A185M.
 Use reinforcing steel conforming to the requirements of ASTM A615M-96, Grade 420.
 Place 40 mm Type B expansion material in the joints caused by any intersection of the riprap with the abutment, wings, or columns.
 Measurement of the "Reinforced Concrete Riprap" shall be in square meters and is based on the outside surface area.
 The toe walls, 75 mm lip, Type B expansion material, welded wire fabric, and reinforcing steel are subsidiary to the bid item "Reinforced Concrete Riprap".

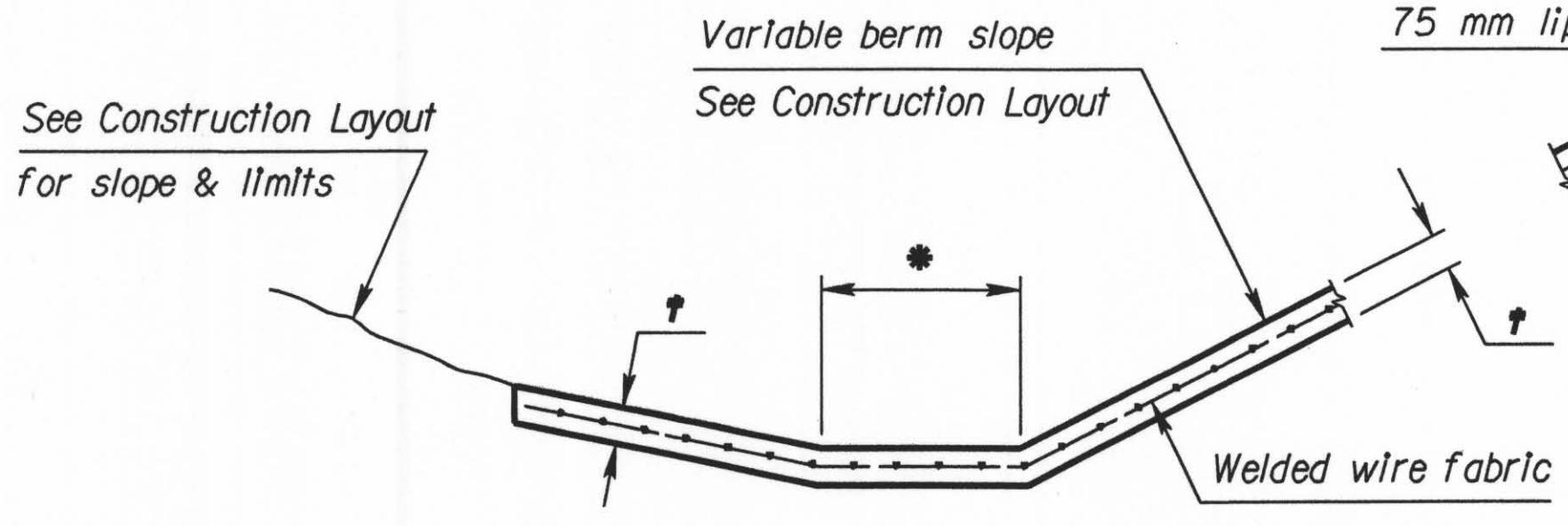


SECTION A-A

TYPICAL CROSS SECTION



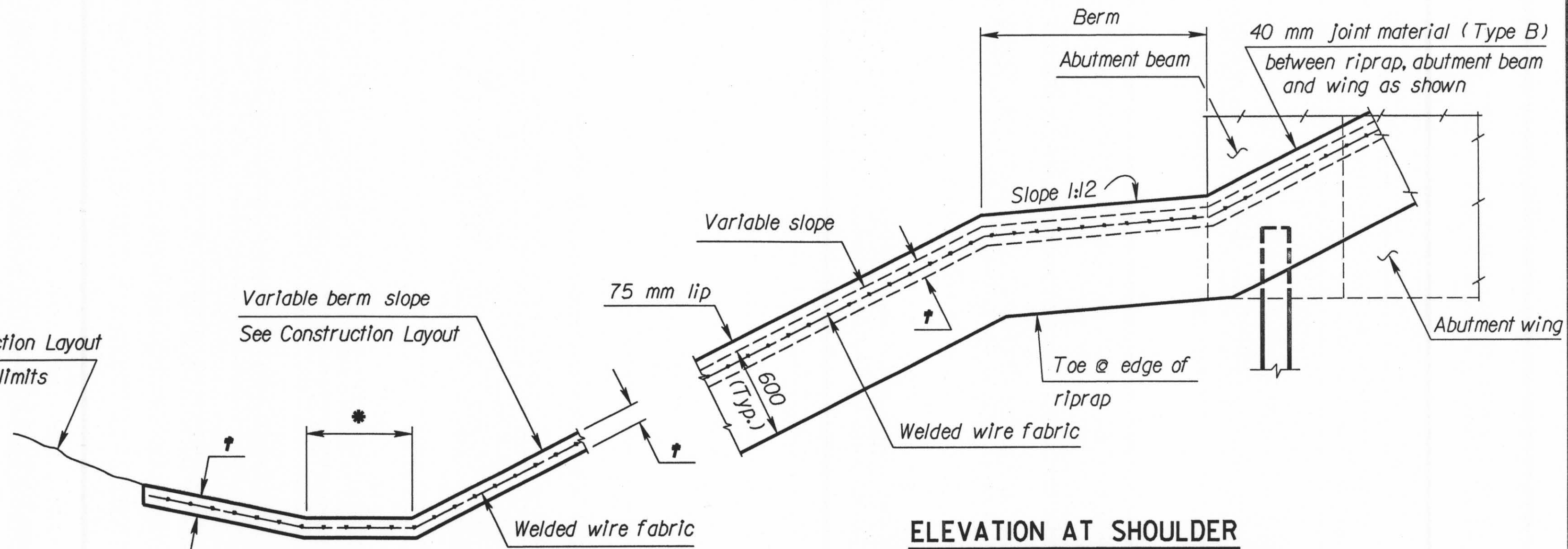
TYPICAL PLAN



DITCH BOTTOM
(When Required by Construction Layout sheet)

* See Construction Layout for this dimension (300 mm Min.).

† See Construction Layout for thickness.



ELEVATION AT SHOULDER

NO.	DATE	REVISIONS	BY	APP'D
2	6-23-97	Change re-steel grade	LRR	KFH
1	3-27-96	ASTM A615M-96 Changes	LRR	KFH

KANSAS DEPARTMENT OF TRANSPORTATION

REINFORCED CONCRETE RIPRAP

BRI30 SI

DESIGNED	DETAIL	CHK.	QUANTITIES	CADD
DESIGN CK.	DETAIL CK.	LRR	QUAN. CK.	CADD CK.

FWHA APPROVAL 7-9-97 APP'D KENNETH F. HURST

Plotted By : drp
 Plot File : i:\1997\97-362\001\Bridges\standards\brl30si.dgn
 Plot Date : 3-26-02
 Std. Base File : i:\usr2\stand\si\brl30si.dgn
 Server File : i:\usr2\stand\si\brl30si.dgn
 Server : witch
 View: PLOT1