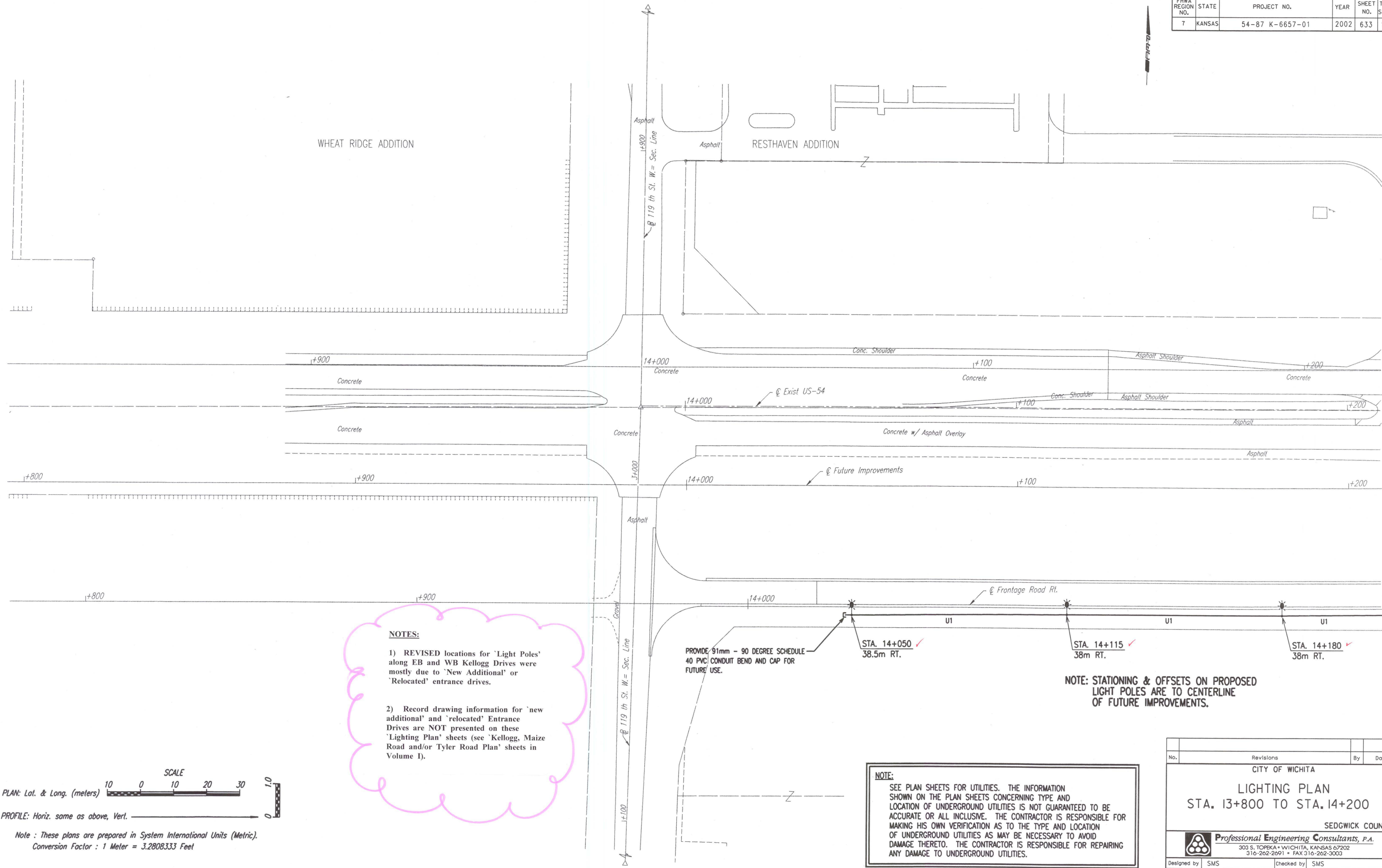


FHWA REGION NO.	STATE	PROJECT NO.	YEAR	SHEET NO.	TOTAL SHEETS
7	KANSAS	54-87 K-6657-01	2002	633	1122

DATE	
BY	
REFERENCES NOTED	
REFERENCES CHECKED	



NOTES:

- 1) REVISED locations for 'Light Poles' along EB and WB Kellogg Drives were mostly due to 'New Additional' or 'Relocated' entrance drives.
- 2) Record drawing information for 'new additional' and 'relocated' Entrance Drives are NOT presented on these 'Lighting Plan' sheets (see 'Kellogg, Maize Road and/or Tyler Road Plan' sheets in Volume I).

PROVIDE 91mm - 90 DEGREE SCHEDULE 40 PVC CONDUIT BEND AND CAP FOR FUTURE USE.

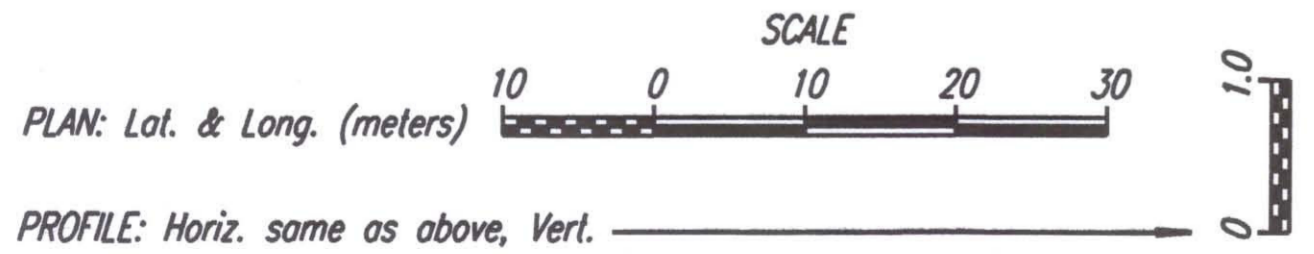
STA. 14+050
38.5m RT.

NOTE: STATIONING & OFFSETS ON PROPOSED LIGHT POLES ARE TO CENTERLINE OF FUTURE IMPROVEMENTS.

STA. 14+115
38m RT.

STA. 14+180
38m RT.

NOTE:
SEE PLAN SHEETS FOR UTILITIES. THE INFORMATION SHOWN ON THE PLAN SHEETS CONCERNING TYPE AND LOCATION OF UNDERGROUND UTILITIES IS NOT GUARANTEED TO BE ACCURATE OR ALL INCLUSIVE. THE CONTRACTOR IS RESPONSIBLE FOR MAKING HIS OWN VERIFICATION AS TO THE TYPE AND LOCATION OF UNDERGROUND UTILITIES AS MAY BE NECESSARY TO AVOID DAMAGE THERETO. THE CONTRACTOR IS RESPONSIBLE FOR REPAIRING ANY DAMAGE TO UNDERGROUND UTILITIES.



Note : These plans are prepared in System International Units (Metric).
Conversion Factor : 1 Meter = 3.2808333 Feet

DSNR: WAN OPER: WAN SCALE: 500
E:/1997/97362/WKA633.DGN 4-9-2002 15:06:44 LAST REV: BY:

No.	Revisions	By	Date
CITY OF WICHITA			
LIGHTING PLAN			
STA. 13+800 TO STA. 14+200			
SEDGWICK COUNTY			
Professional Engineering Consultants, P.A. 303 S. TOPKA • WICHITA, KANSAS 67202 316-262-2691 • FAX 316-262-3003			
Designed by	SMS	Checked by	SMS
Drawn by	WAN	Date	APRIL, 2002
		Job No.	97362