

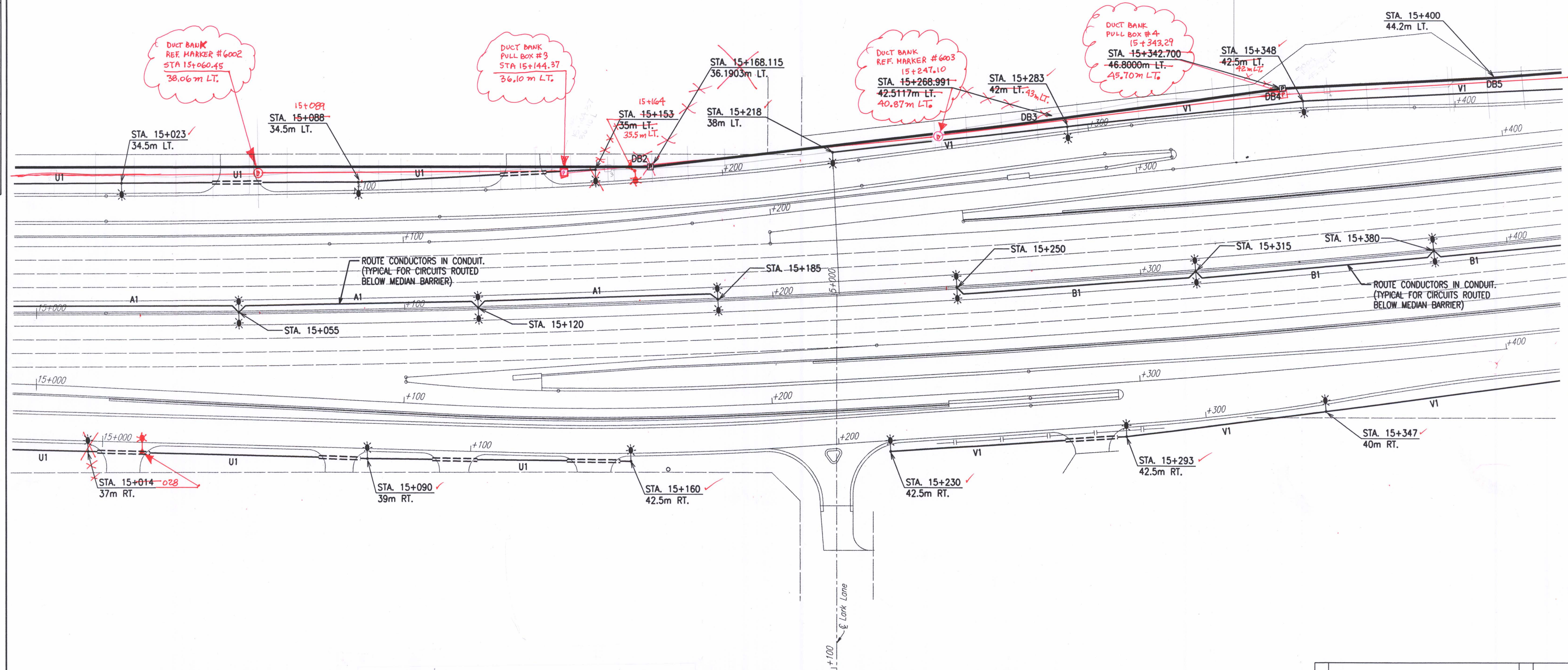
| FHWA REGION NO. | STATE | PROJECT NO. | YEAR | SHEET NO. | TOTAL SHEETS |
|-----------------|--------|-----------------|------|-----------|--------------|
| 7 | KANSAS | 54-87 K-6657-01 | 2002 | 636 | 1122 |

(1st Set)

NOTE: FURTHER UPDATES CAN BE FOUND ON THE 2ND SET OF LIGHTING PLANS, SHEET NO.'S 635 TO 643, WHICH DIRECTLY FOLLOW 1ST SET.

NOTE:
SEE PLAN SHEETS FOR UTILITIES. THE INFORMATION SHOWN ON THE PLAN SHEETS CONCERNING TYPE AND LOCATION OF UNDERGROUND UTILITIES IS NOT GUARANTEED TO BE ACCURATE OR ALL INCLUSIVE. THE CONTRACTOR IS RESPONSIBLE FOR MAKING HIS OWN VERIFICATION AS TO THE TYPE AND LOCATION OF UNDERGROUND UTILITIES AS MAY BE NECESSARY TO AVOID DAMAGE THERETO. THE CONTRACTOR IS RESPONSIBLE FOR REPAIRING ANY DAMAGE TO UNDERGROUND UTILITIES.

| | |
|--------------------|--|
| DATE | |
| BY | |
| REFERENCES NOTED | |
| REFERENCES CHECKED | |



DUCT BANK REF. MARKER #6002
STA 15+060.45
38.06 m LT.

DUCT BANK PULL BOX #3
STA 15+144.37
36.10 m LT.

DUCT BANK REF. MARKER #6003
15+247.10
STA. 15+268.991
42.5117m LT.
40.87m LT.

DUCT BANK PULL BOX #4
15+343.29
STA. 15+342.700
46.8000m LT.
45.70m LT.

NOTES:

- 1) REVISED locations for 'Light Poles' along EB and WB Kellogg Drives were mostly due to 'New Additional' or 'Relocated' entrance drives.
- 2) Record drawing information for 'new additional' and 'relocated' Entrance Drives are NOT presented on these 'Lighting Plan' sheets (see 'Kellogg, Maize Road and/or Tyler Road Plan' sheets in Volume I).

DSNR: WAN OPER: WAN SCALE: 500
E:/1997/97362/WK4636.DGN 4-10-2002 7:25:50 LAST REV: BY:

| | | | |
|--|-----------|------------|-------------|
| No. | Revisions | By | Date |
| CITY OF WICHITA | | | |
| LIGHTING PLAN | | | |
| STA. 15+000 TO STA. 15+400 | | | |
| SEDGWICK COUNTY | | | |
| Professional Engineering Consultants, P.A. | | | |
| 303 S. TOPEKA • WICHITA, KANSAS 67202 316-262-2691 • FAX 316-262-3003 | | | |
| Designed by | SMS | Checked by | SMS |
| Drawn by | WAN | Date | APRIL, 2002 |
| | | Job No. | 97362 |