

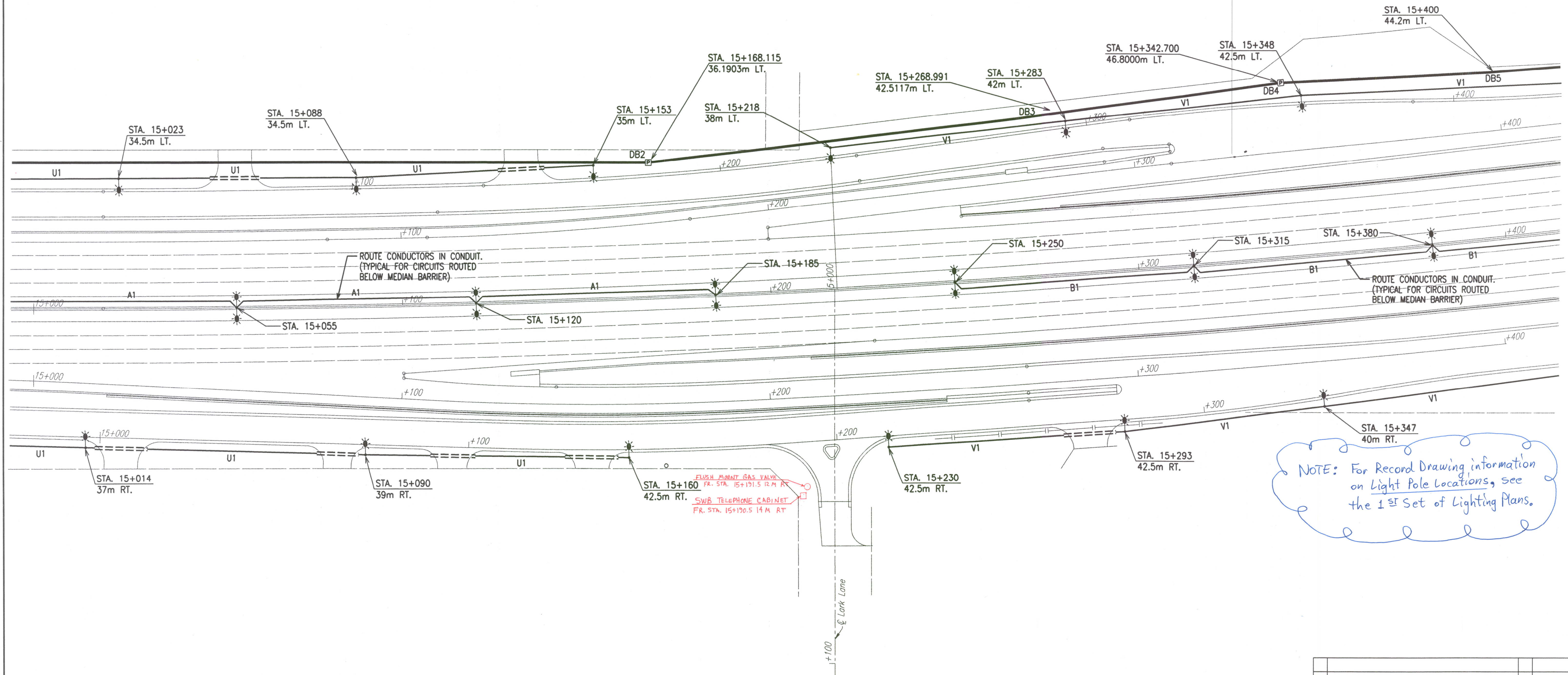
FHWA REGION NO.	STATE	PROJECT NO.	YEAR	SHEET NO.	TOTAL SHEETS
7	KANSAS	54-87 K-6657-01	2002	636	1122

(2nd SET)

NOTE: FURTHER UPDATES CAN BE FOUND ON THE 1<sup>ST</sup> SET OF LIGHTING PLANS, SHEET NO.'S 635 TO 643, WHICH DIRECTLY PRECEED THE 2<sup>ND</sup> SET.

**NOTE:**  
SEE PLAN SHEETS FOR UTILITIES. THE INFORMATION SHOWN ON THE PLAN SHEETS CONCERNING TYPE AND LOCATION OF UNDERGROUND UTILITIES IS NOT GUARANTEED TO BE ACCURATE OR ALL INCLUSIVE. THE CONTRACTOR IS RESPONSIBLE FOR MAKING HIS OWN VERIFICATION AS TO THE TYPE AND LOCATION OF UNDERGROUND UTILITIES AS MAY BE NECESSARY TO AVOID DAMAGE THERETO. THE CONTRACTOR IS RESPONSIBLE FOR REPAIRING ANY DAMAGE TO UNDERGROUND UTILITIES.

DATE	
BY	
REFERENCES NOTED	
REFERENCES CHECKED	



NOTE: For Record Drawing information on Light Pole Locations, see the 1<sup>ST</sup> Set of Lighting Plans.

DSNR: WAN OPER: WAN SCALE: 500  
 E: 1/1997/97362/WKA636.DGN 4-10-2002 7:25:50 LAST REV: BY:

No.	Revisions	By	Date
CITY OF WICHITA			
LIGHTING PLAN			
STA. 15+000 TO STA. 15+400			
SEDGWICK COUNTY			
<b>Professional Engineering Consultants, P.A.</b> <small>303 S. TOPEKA • WICHITA, KANSAS 67202          316-262-2691 • FAX 316-262-3003</small>			
Designed by	SMS	Checked by	SMS
Drawn by	WAN	Date	APRIL, 2002
		Job No.	97362