

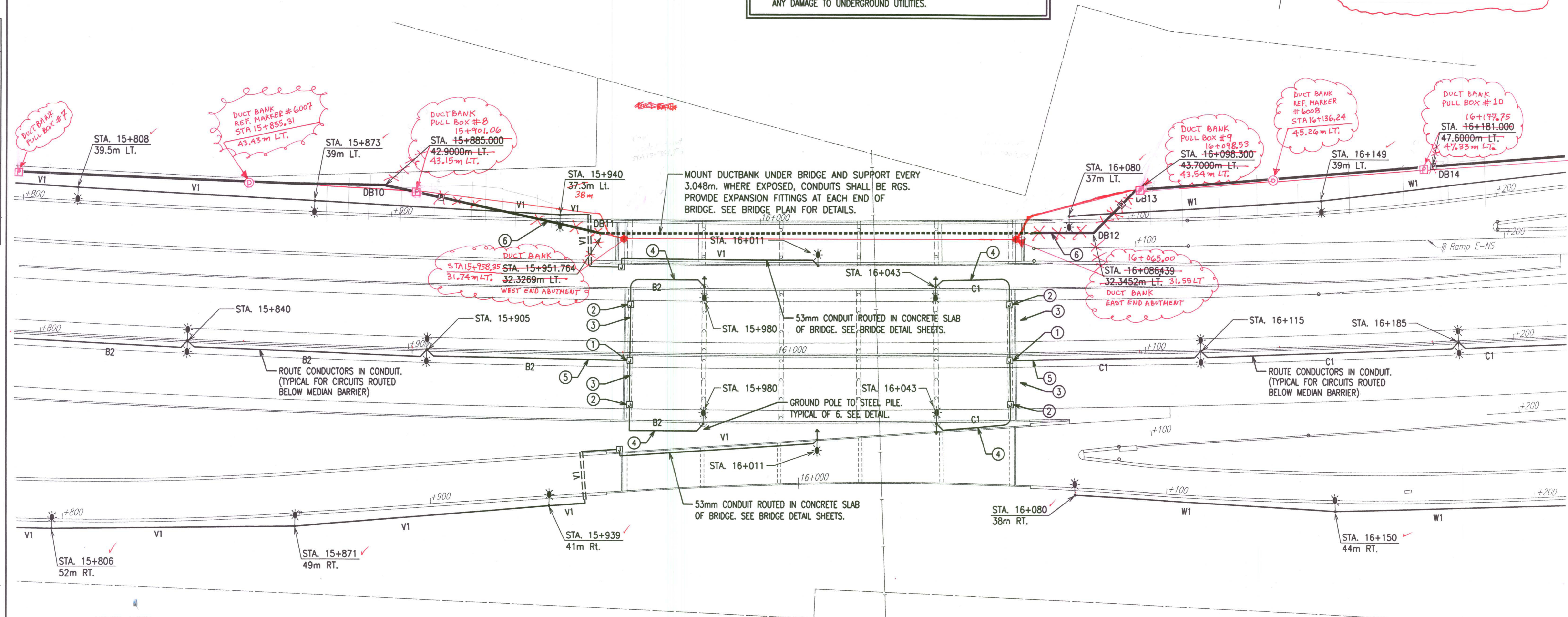
FHWA REGION NO.	STATE	PROJECT NO.	YEAR	SHEET NO.	TOTAL SHEETS
7	KANSAS	54-87 K-6657-01	2002	638	1122

(1st Set)

NOTE: FURTHER UPDATES CAN BE FOUND ON THE 2ND SET OF LIGHTING PLANS, SHEET NO.'S 635 TO 643, WHICH DIRECTLY FOLLOW 1ST SET.

NOTE:
SEE PLAN SHEETS FOR UTILITIES. THE INFORMATION SHOWN ON THE PLAN SHEETS CONCERNING TYPE AND LOCATION OF UNDERGROUND UTILITIES IS NOT GUARANTEED TO BE ACCURATE OR ALL INCLUSIVE. THE CONTRACTOR IS RESPONSIBLE FOR MAKING HIS OWN VERIFICATION AS TO THE TYPE AND LOCATION OF UNDERGROUND UTILITIES AS MAY BE NECESSARY TO AVOID DAMAGE THERETO. THE CONTRACTOR IS RESPONSIBLE FOR REPAIRING ANY DAMAGE TO UNDERGROUND UTILITIES.

DATE	
BY	
REFERENCES NOTED	
REFERENCES CHECKED	



KEYED NOTE:

- ① SURFACE MOUNTED JUNCTION BOX (305mm x 305mm x 155mm) ON TOP OF ABUTMENT. SEE CONDUIT MOUNTING DETAILS SHEET.
- ② SURFACE MOUNTED JUNCTION BOX (305mm x 305mm x 155mm).
- ③ 27mm RGS SURFACE MOUNTED CONDUIT ON TOP OF BERM.
- ④ 27mm RGS CONDUIT ROUTED IN OUTSIDE BRIDGE BARRIER. SEE BRIDGE PLANS.
- ⑤ CONDUIT ROUTED FROM JUNCTION BOX (305mm x 305mm x 155mm) THROUGH ABUTMENT AND BELOW CENTER MEDIAN BARRIER BASE TO CENTER BARRIER POLE MOUNTED LIGHTING UNITS. SEE CONDUIT MOUNTING DETAIL SHEET.
- ⑥ PROVIDE EXCAVATABLE FLOWABLE FILL FOR DUCTBANK WHERE IT IS LOCATED BELOW ROADWAY.

NOTES:

- 1) REVISED locations for 'Light Poles' along EB and WB Kellogg Drives were mostly due to 'New Additional' or 'Relocated' entrance drives.
- 2) Record drawing information for 'new additional' and 'relocated' Entrance Drives are NOT presented on these 'Lighting Plan' sheets (see 'Kellogg, Maize Road and/or Tyler Road Plan' sheets in Volume I).

DSNR: WAN OPER: WAN SCALE: 500 E:\1997\97362\WKA638.DGN 4-10-2002 7:27:14 LAST REV:

No.	Revisions	By	Date
CITY OF WICHITA			
LIGHTING PLAN			
STA. 15+800 TO STA. 16+200			
SEDGWICK COUNTY			
Professional Engineering Consultants, P.A.			
303 S. TOPEKA • WICHITA, KANSAS 67202 316-262-2691 • FAX 316-262-3003			
Designed by	SMS	Checked by	SMS
Drawn by	WAN	Date	APRIL, 2002
		Job No.	97362