

FHWA REGION NO.	STATE	PROJECT NO.	YEAR	SHEET NO.	TOTAL SHEETS
7	KANSAS	54-87 K-6657-01	2002	639	1122

(1st Set)

NOTE: FURTHER UPDATES CAN BE FOUND ON THE 2ND SET OF LIGHTING PLANS, SHEET NO.'S 635 TO 643, WHICH DIRECTLY FOLLOW 1ST SET.

CIRCUIT I.D.	LOAD (AMPS)	CKT. BKR. SIZE (AMPS)	WIRE SIZE	GROUND SIZE	CONTACTOR SIZE
C1	8.8	20	#6	#6	30A
C2	7.5	20	#6	#6	30A
-	-	-	-	-	-
-	-	-	-	-	-

MAIN CIRCUIT BREAKER SIZE: 2-POLE, 60 AMP, 480V

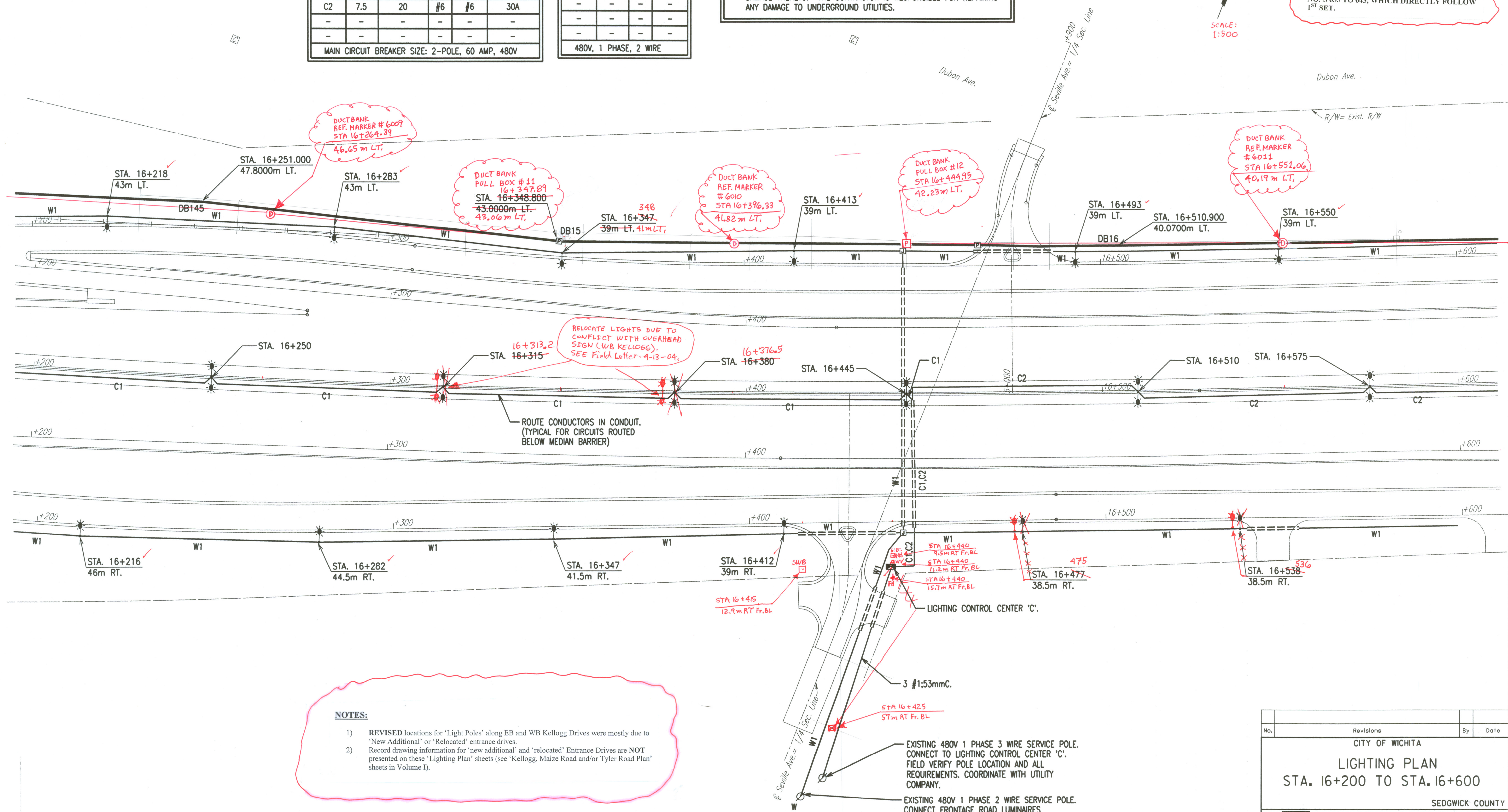
CIRCUIT I.D.	LOAD (AMPS)	WIRE SIZE	GROUND SIZE
W1	15	#6	#6
-	-	-	-
-	-	-	-
-	-	-	-

480V, 1 PHASE, 2 WIRE

NOTE: SEE PLAN SHEETS FOR UTILITIES. THE INFORMATION SHOWN ON THE PLAN SHEETS CONCERNING TYPE AND LOCATION OF UNDERGROUND UTILITIES IS NOT GUARANTEED TO BE ACCURATE OR ALL INCLUSIVE. THE CONTRACTOR IS RESPONSIBLE FOR MAKING HIS OWN VERIFICATION AS TO THE TYPE AND LOCATION OF UNDERGROUND UTILITIES AS MAY BE NECESSARY TO AVOID DAMAGE THERETO. THE CONTRACTOR IS RESPONSIBLE FOR REPAIRING ANY DAMAGE TO UNDERGROUND UTILITIES.

SCALE: 1:500

DATE	
BY	
REFERENCES NOTED	
REFERENCES CHECKED	



NOTES:

- 1) REVISED locations for 'Light Poles' along EB and WB Kellogg Drives were mostly due to 'New Additional' or 'Relocated' entrance drives.
- 2) Record drawing information for 'new additional' and 'relocated' Entrance Drives are NOT presented on these 'Lighting Plan' sheets (see 'Kellogg, Maize Road and/or Tyler Road Plan' sheets in Volume I).

No.	Revisions	By	Date

CITY OF WICHITA

LIGHTING PLAN
STA. 16+200 TO STA. 16+600

SEDGWICK COUNTY

Professional Engineering Consultants, P.A.
303 S. TOPEKA • WICHITA, KANSAS 67202
316-262-2691 • FAX 316-262-3003

Designed by	SMS	Checked by	SMS
Drawn by	WAN	Date	APRIL, 2002
		Job No.	97362

DSNR: WAN OPER: WAN SCALE: 500
E:1997/97362/WK4639.DGN 4-10-2002 7:28:20 LAST REV: