

KEYED NOTE:

- ① SURFACE MOUNTED JUNCTION BOX (305mm x 305mm x 155mm) ON TOP OF ABUTMENT. SEE CONDUIT MOUNTING DETAILS SHEET.
- ② SURFACE MOUNTED JUNCTION BOX (305mm x 305mm x 155mm).
- ③ 27mm RGS SURFACE MOUNTED CONDUIT ON TOP OF BERM.
- ④ 27mm RGS CONDUIT ROUTED IN OUTSIDE BRIDGE BARRIER. SEE BRIDGE PLANS.
- ⑤ 53mm CONDUIT ROUTED FROM JUNCTION BOX (305mm x 305mm x 155mm) THROUGH ABUTMENT AND BELOW CENTER MEDIAN BARRIER BASE TO CENTER BARRIER POLE MOUNTED LIGHTING UNITS. SEE CONDUIT MOUNTING DETAIL SHEET.
- ⑥ PROVIDE EXCAVATABLE FLOWABLE FILL FOR DUCTBANK WHERE IT IS LOCATED BELOW ROADWAY.

CONTROL CENTER 'D' CIRCUIT SCHEDULE					
CIRCUIT I.D.	LOAD (AMPS)	CKT. BKR. SIZE (AMPS)	WIRE SIZE	GROUND SIZE	CONTACTOR SIZE
D1	8.8	20	#6	#6	30A
D2	5.0	20	#6	#6	30A
-	-	-	-	-	-
-	-	-	-	-	-
MAIN CIRCUIT BREAKER SIZE: 2-POLE, 60 AMP 480V					

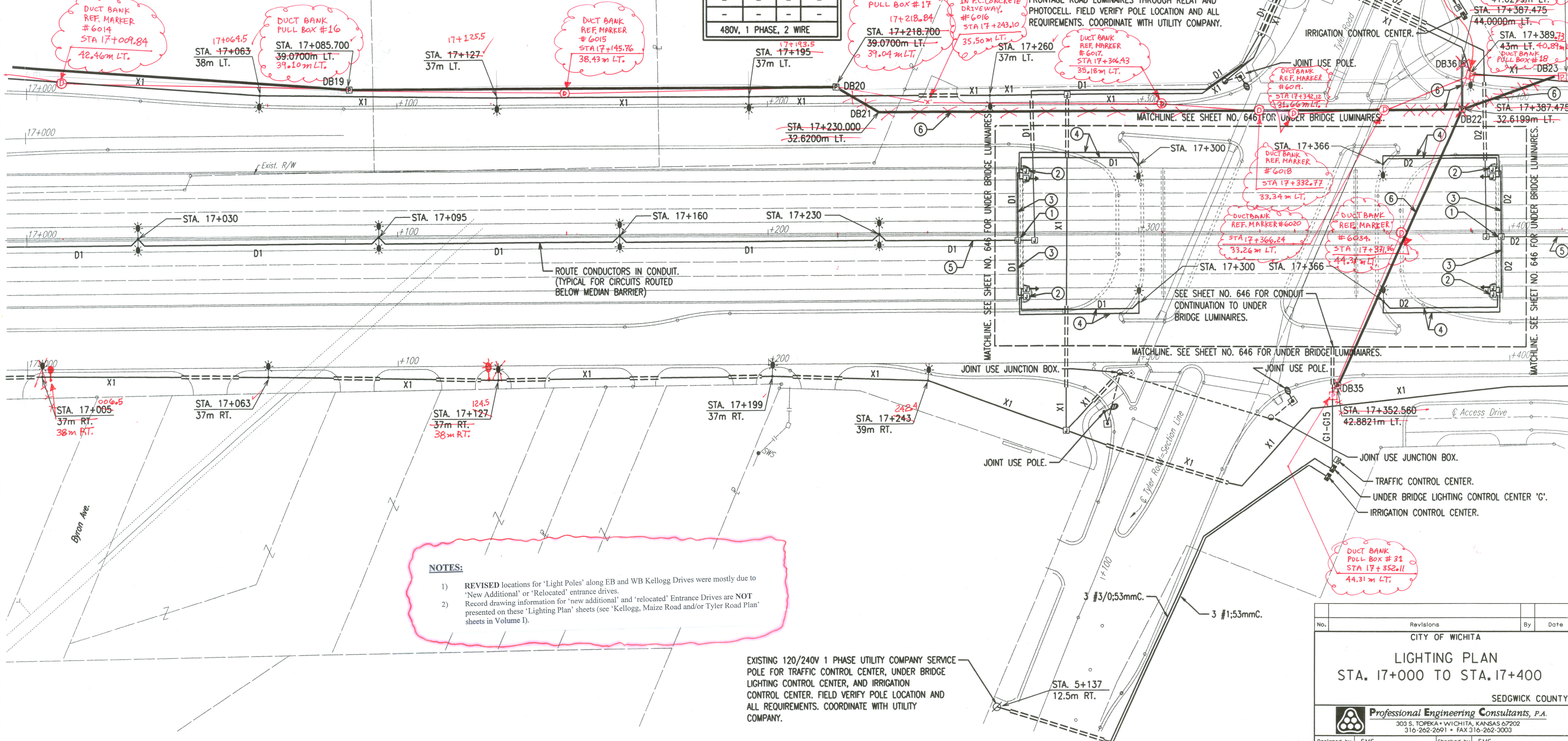
NOTE:
SEE PLAN SHEETS FOR UTILITIES. THE INFORMATION SHOWN ON THE PLAN SHEETS CONCERNING TYPE AND LOCATION OF UNDERGROUND UTILITIES IS NOT GUARANTEED TO BE ACCURATE OR ALL INCLUSIVE. THE CONTRACTOR IS RESPONSIBLE FOR MAKING HIS OWN VERIFICATION AS TO THE TYPE AND LOCATION OF UNDERGROUND UTILITIES AS MAY BE NECESSARY TO AVOID DAMAGE THERETO. THE CONTRACTOR IS RESPONSIBLE FOR REPAIRING ANY DAMAGE TO UNDERGROUND UTILITIES.

FRONTAGE ROAD 'X' CIRCUIT SCHEDULE			
CIRCUIT I.D.	LOAD (AMPS)	WIRE SIZE	GROUND SIZE
X1	15	#6	#6
-	-	-	-
-	-	-	-
480V, 1 PHASE, 2 WIRE			

NOTE: FURTHER UPDATES CAN BE FOUND ON THE 2ND SET OF LIGHTING PLANS, SHEET NO.'S 635 TO 643, WHICH DIRECTLY FOLLOW 1ST SET.

FHWA REGION NO.	STATE	PROJECT NO.	YEAR	SHEET NO.	TOTAL SHEETS
7	KANSAS	54-87 K-6657-01	2002	641	1122

DATE	
BY	
REFERENCES NOTED	
REFERENCES CHECKED	



NOTES:

- 1) REVISED locations for 'Light Poles' along EB and WB Kellogg Drives were mostly due to 'New Additional' or 'Relocated' entrance drives.
- 2) Record drawing information for 'new additional' and 'relocated' Entrance Drives are NOT presented on these 'Lighting Plan' sheets (see 'Kellogg, Maize Road and/or Tyler Road Plan' sheets in Volume 1).

EXISTING 120/240V 1 PHASE UTILITY COMPANY SERVICE POLE FOR TRAFFIC CONTROL CENTER, UNDER BRIDGE LIGHTING CONTROL CENTER, AND IRRIGATION CONTROL CENTER. FIELD VERIFY POLE LOCATION AND ALL REQUIREMENTS. COORDINATE WITH UTILITY COMPANY.

No.	Revisions	By	Date
CITY OF WICHITA			
LIGHTING PLAN			
STA. 17+000 TO STA. 17+400			
SEDGWICK COUNTY			
Professional Engineering Consultants, P.A.			
303 S. TOPEKA • WICHITA, KANSAS 67202 316-262-2691 • FAX 316-262-3003			
Designed by	SMS	Checked by	SMS
Drawn by	WAN	Date	APRIL, 2002
		Job No.	97362

DSNR: WAN OPER: WAN SCALE: 500
 E7/1997/97362/WK464LDGN 4-10-2002 7:29:57 LAST REV: BY: