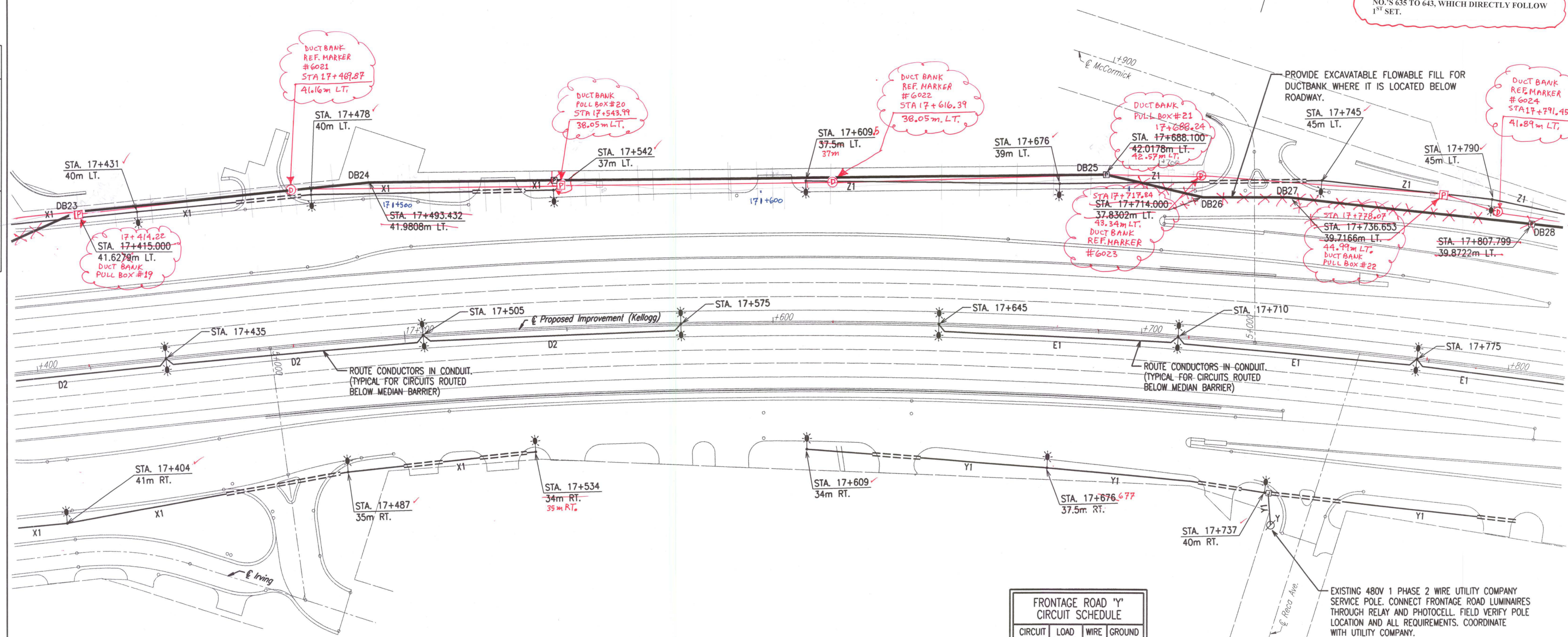


(1st Set)

NOTE: FURTHER UPDATES CAN BE FOUND ON THE 2ND SET OF LIGHTING PLANS, SHEET NO.'S 635 TO 643, WHICH DIRECTLY FOLLOW 1ST SET.

DATE	
BY	
REFERENCES NOTED	
REFERENCES CHECKED	



NOTE:
SEE PLAN SHEETS FOR UTILITIES. THE INFORMATION SHOWN ON THE PLAN SHEETS CONCERNING TYPE AND LOCATION OF UNDERGROUND UTILITIES IS NOT GUARANTEED TO BE ACCURATE OR ALL INCLUSIVE. THE CONTRACTOR IS RESPONSIBLE FOR MAKING HIS OWN VERIFICATION AS TO THE TYPE AND LOCATION OF UNDERGROUND UTILITIES AS MAY BE NECESSARY TO AVOID DAMAGE THERETO. THE CONTRACTOR IS RESPONSIBLE FOR REPAIRING ANY DAMAGE TO UNDERGROUND UTILITIES.

NOTES:

- 1) REVISED locations for 'Light Poles' along EB and WB Kellogg Drives were mostly due to 'New Additional' or 'Relocated' entrance drives.
- 2) Record drawing information for 'new additional' and 'relocated' Entrance Drives are NOT presented on these 'Lighting Plan' sheets (see 'Kellogg, Maize Road and/or Tyler Road Plan' sheets in Volume I).

FRONTAGE ROAD 'Y' CIRCUIT SCHEDULE

CIRCUIT I.D.	LOAD (AMPS)	WIRE SIZE	GROUND SIZE
Y1	10	#6	#6
-	-	-	-
-	-	-	-
-	-	-	-

480V, 1 PHASE, 2 WIRE

EXISTING 480V 1 PHASE 2 WIRE UTILITY COMPANY SERVICE POLE. CONNECT FRONTAGE ROAD LUMINAIRES THROUGH RELAY AND PHOTOCCELL. FIELD VERIFY POLE LOCATION AND ALL REQUIREMENTS. COORDINATE WITH UTILITY COMPANY.

DSNR: WAN OPER: WAN SCALE: 500
 E:1997/97362/WKAG42-DGN 4-10-2002 7:31:07 LAST REV: BY:

No.	Revisions	By	Date
CITY OF WICHITA			
LIGHTING PLAN			
STA. 17+400 TO STA. 17+800			
SEDGWICK COUNTY			
Professional Engineering Consultants, P.A. 303 S. TOPEKA • WICHITA, KANSAS 67202 316-262-2691 • FAX 316-262-3003			
Designed by	SMS	Checked by	SMS
Drawn by	WAN	Date	APRIL, 2002
		Job No.	97362