

| CONTROL CENTER 'E' CIRCUIT SCHEDULE | | | | | |
|--|-------------|-----------------------|-----------|-------------|----------------|
| CIRCUIT I.D. | LOAD (AMPS) | CKT. BKR. SIZE (AMPS) | WIRE SIZE | GROUND SIZE | CONTACTOR SIZE |
| E1 | 13.75 | 20 | #6 | #6 | 30A |
| - | - | - | - | - | - |
| - | - | - | - | - | - |

MAIN CIRCUIT BREAKER SIZE: 2-POLE, 60 AMP, 480V

| FRONTAGE ROAD 'Z' CIRCUIT SCHEDULE | | | |
|---------------------------------------|-------------|-----------|-------------|
| CIRCUIT I.D. | LOAD (AMPS) | WIRE SIZE | GROUND SIZE |
| Z1 | 8.2 | #6 | #6 |
| - | - | - | - |
| - | - | - | - |

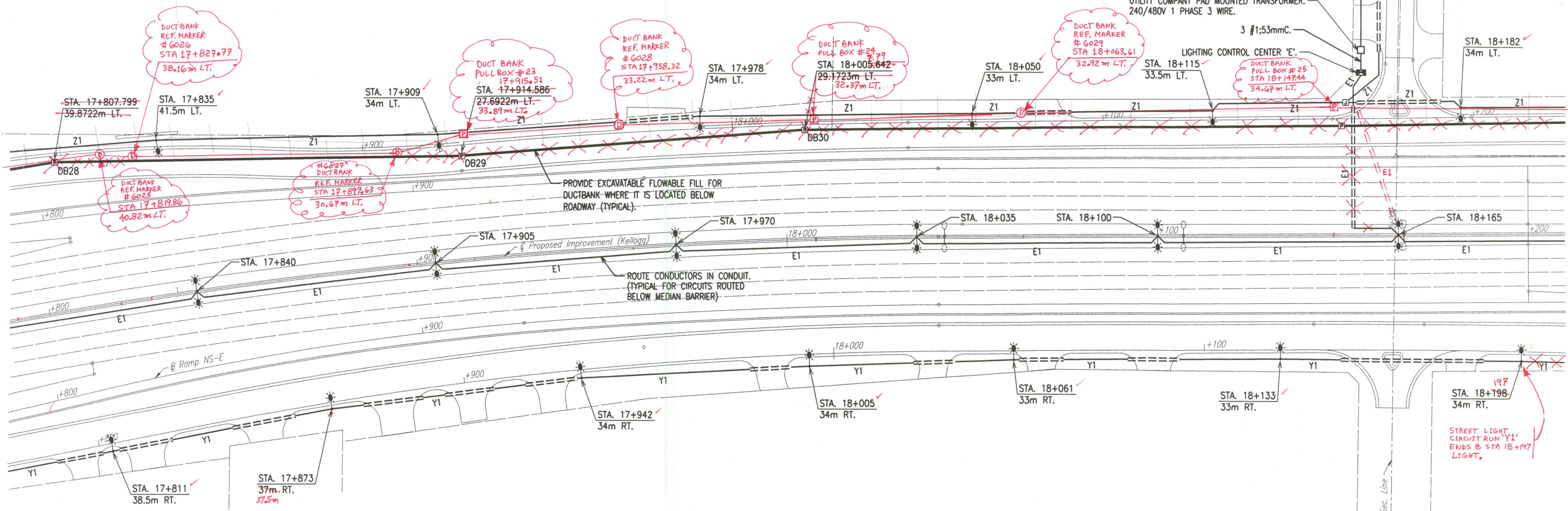
480V, 1 PHASE, 2 WIRE

NOTE:
SEE PLAN SHEETS FOR UTILITIES. THE INFORMATION SHOWN ON THE PLAN SHEETS CONCERNING TYPE AND LOCATION OF UNDERGROUND UTILITIES IS NOT GUARANTEED TO BE ACCURATE OR ALL INCLUSIVE. THE CONTRACTOR IS RESPONSIBLE FOR MAKING HIS OWN VERIFICATION AS TO THE TYPE AND LOCATION OF UNDERGROUND UTILITIES AS MAY BE NECESSARY TO AVOID DAMAGE THERETO. THE CONTRACTOR IS RESPONSIBLE FOR REPAIRING ANY DAMAGE TO UNDERGROUND UTILITIES.

EXISTING 480V 1 PHASE 2 WIRE UTILITY COMPANY SERVICE POLE. CONNECT FRONTAGE ROAD LUMINAIRES THROUGH RELAY AND PHOTOCELL. FIELD VERIFY POLE LOCATION AND ALL REQUIREMENTS. COORDINATE WITH UTILITY COMPANY.

NOTE: FURTHER UPDATES CAN BE FOUND ON THE 2ND SET OF LIGHTING PLANS, SHEET NO.'S 635 TO 643, WHICH DIRECTLY FOLLOW 1ST SET.

| | |
|--------------------|--|
| DATE | |
| BY | |
| REFERENCES NOTED | |
| REFERENCES CHECKED | |



NOTES:

- 1) REVISED locations for 'Light Poles' along EB and WB Kellogg Drives were mostly due to 'New Additional' or 'Relocated' entrance drives.
- 2) Record drawing information for 'new additional' and 'relocated' Entrance Drives are NOT presented on these 'Lighting Plan' sheets (see 'Kellogg, Maize Road and/or Tyler Road Plan' sheets in Volume I).

| | | | |
|--|-----------|------------|-------------|
| No. | Revisions | By | Date |
| CITY OF WICHITA | | | |
| LIGHTING PLAN | | | |
| STA. 17+800 TO STA. 18+200 | | | |
| SEDGWICK COUNTY | | | |
| Professional Engineering Consultants, P.A. | | | |
| 303 S. TOPEKA • WICHITA, KANSAS 67202 316-262-2691 • FAX 316-262-3003 | | | |
| Designed by | SMS | Checked by | SMS |
| Drawn by | WAN | Date | APRIL, 2002 |
| | | Job No. | 97362 |

DSNR: WAN OPER: WAN SCALE: 500
 E:1997/97362/WKA643.DGN 4-10-2002 7:32:24 LAST REV: