

CONTROL CENTER 'E' CIRCUIT SCHEDULE					
CIRCUIT I.D.	LOAD (AMPS)	CKT. BKR. SIZE (AMPS)	WIRE SIZE	GROUND SIZE	CONTACTOR SIZE
E1	13.75	20	#6	#6	30A
-	-	-	-	-	-
-	-	-	-	-	-

MAIN CIRCUIT BREAKER SIZE: 2-POLE, 60 AMP, 480V

FRONTAGE ROAD 'Z' CIRCUIT SCHEDULE			
CIRCUIT I.D.	LOAD (AMPS)	WIRE SIZE	GROUND SIZE
Z1	8.2	#6	#6
-	-	-	-
-	-	-	-

480V, 1 PHASE, 2 WIRE

NOTE:
SEE PLAN SHEETS FOR UTILITIES. THE INFORMATION SHOWN ON THE PLAN SHEETS CONCERNING TYPE AND LOCATION OF UNDERGROUND UTILITIES IS NOT GUARANTEED TO BE ACCURATE OR ALL INCLUSIVE. THE CONTRACTOR IS RESPONSIBLE FOR MAKING HIS OWN VERIFICATION AS TO THE TYPE AND LOCATION OF UNDERGROUND UTILITIES AS MAY BE NECESSARY TO AVOID DAMAGE THERETO. THE CONTRACTOR IS RESPONSIBLE FOR REPAIRING ANY DAMAGE TO UNDERGROUND UTILITIES.

NOTE: For Record Drawing information on Light Pole Locations, see the 1st Set of Lighting Plans.

NOTE: FURTHER UPDATES CAN BE FOUND ON THE 1ST SET OF LIGHTING PLANS, SHEET NO.'S 635 TO 643, WHICH DIRECTLY PRECEED THE 2ND SET.

EXISTING 480V 1 PHASE 2 WIRE UTILITY COMPANY SERVICE POLE. CONNECT FRONTAGE ROAD LUMINAIRES THROUGH RELAY AND PHOTOCELL. FIELD VERIFY POLE LOCATION AND ALL REQUIREMENTS. COORDINATE WITH UTILITY COMPANY.

103mmC. WITH PULL ROPE FOR UTILITY COMPANY PRIMARY

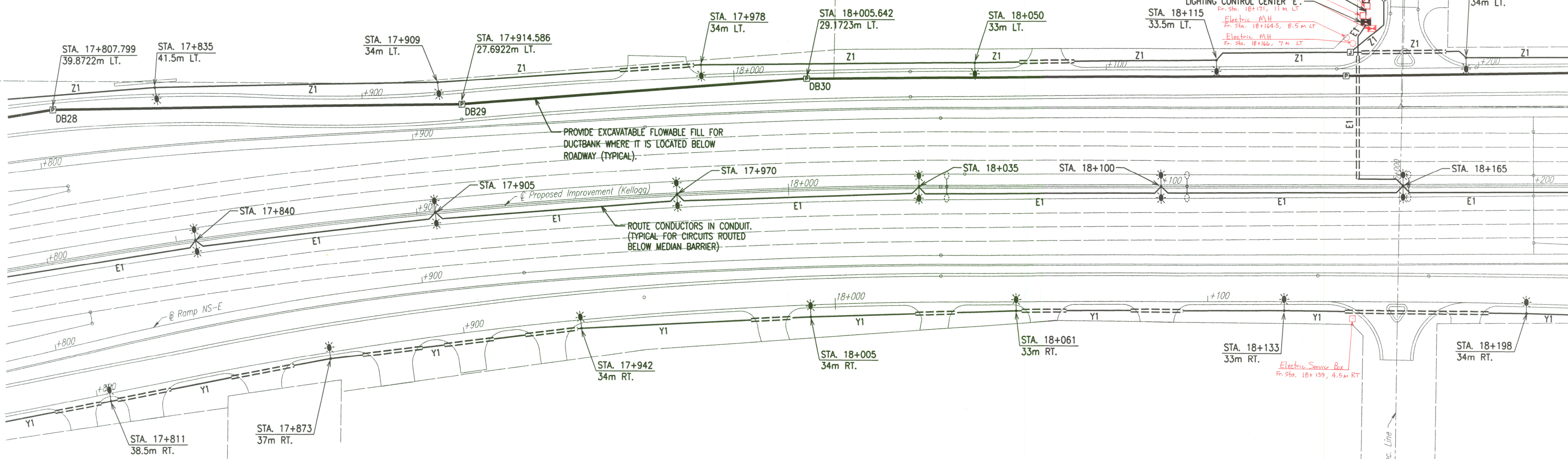
UTILITY COMPANY PAD MOUNTED TRANSFORMER. 240/480V 1 PHASE 3 WIRE. Fr. Sta. 18+170, 16.5m LT.

3 #1.53mmC. Electric Service Base Fr. Sta. 18+169, 14m LT.

LIGHTING CONTROL CENTER 'E'. Fr. Sta. 18+171, 11m LT.

Electric MH Fr. Sta. 18+164.5, 8.5m LT.

Electric MH Fr. Sta. 18+166, 7m LT.



DATE	
BY	
REFERENCES NOTED	
REFERENCES CHECKED	

DSMR: WAN OPER: WAN SCALE: 500
E:/1997/97362/WK4643.DGN 4-10-2002 7:32:24 LAST REV: BY:

No.	Revisions	By	Date
CITY OF WICHITA			
LIGHTING PLAN			
STA. 17+800 TO STA. 18+200			
SEDGWICK COUNTY			
Professional Engineering Consultants, P.A.			
303 S. TOPEKA • WICHITA, KANSAS 67202 316-262-2691 • FAX 316-262-3003			
Designed by	SMS	Checked by	SMS
Drawn by	WAN	Date	APRIL, 2002
		Job No.	97362