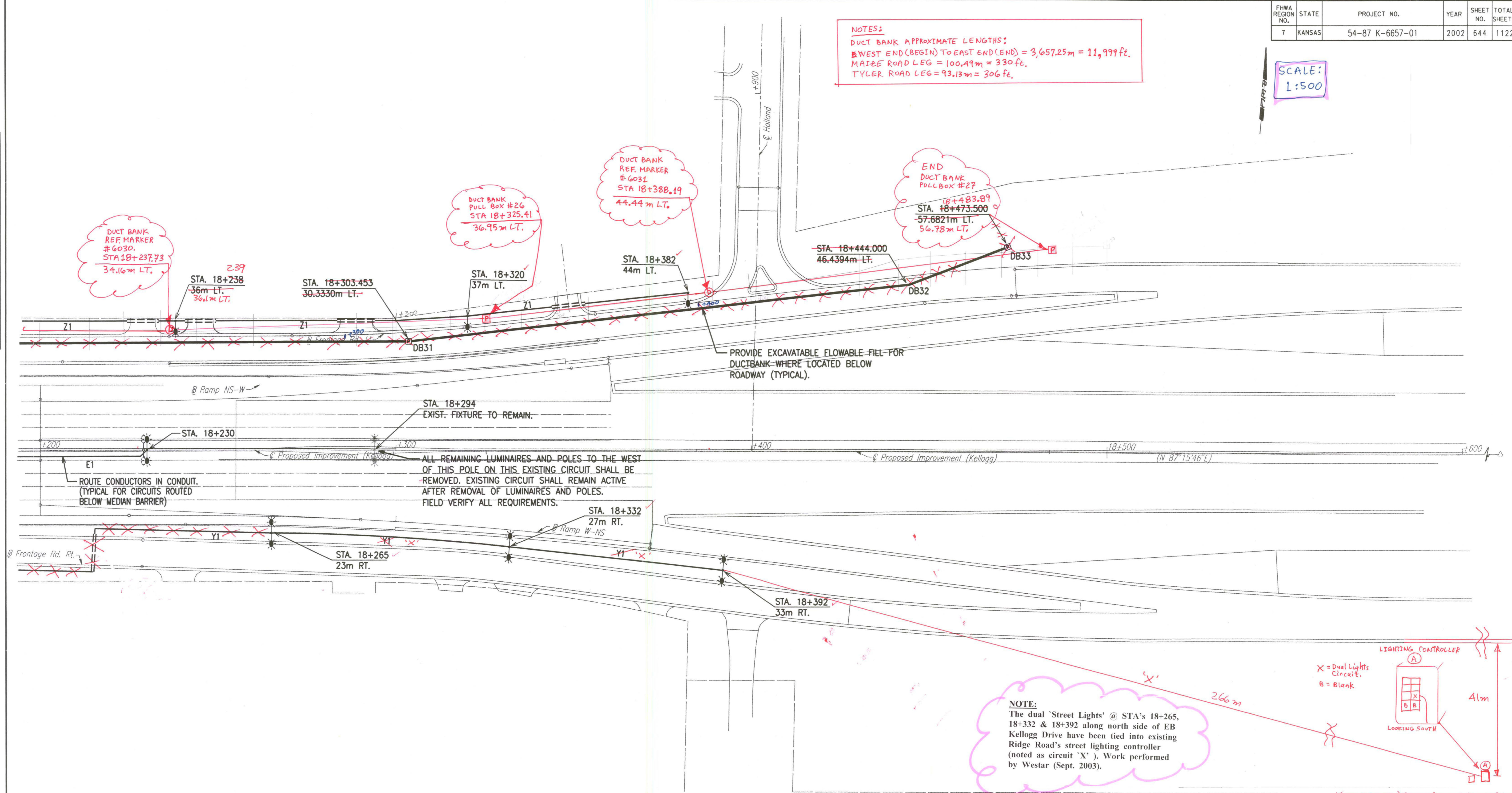


FHWA REGION NO.	STATE	PROJECT NO.	YEAR	SHEET NO.	TOTAL SHEETS
7	KANSAS	54-87 K-6657-01	2002	644	1122

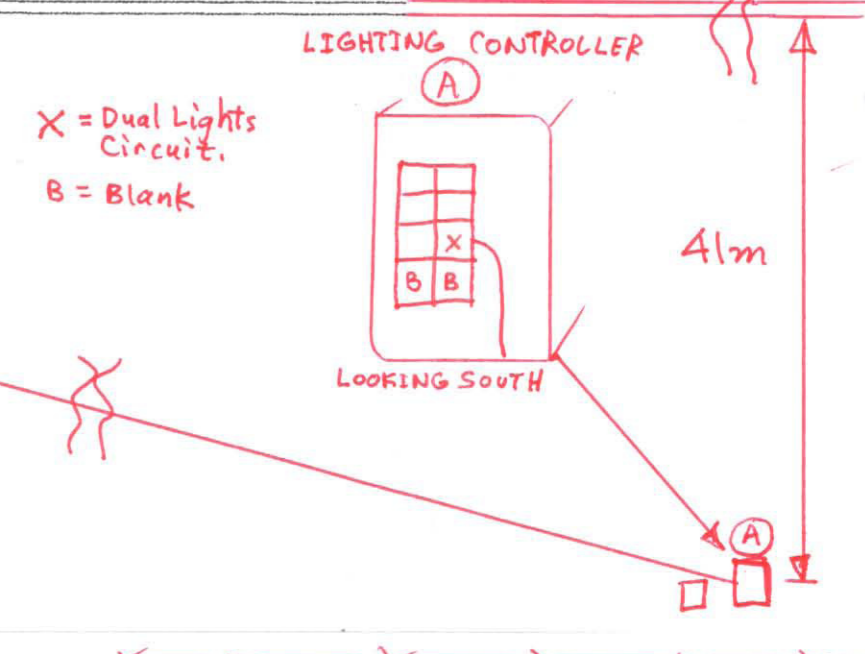
SCALE:
1:500

NOTES:
DUCT BANK APPROXIMATE LENGTHS:
WEST END (BEGIN) TO EAST END (END) = 3,657.25m = 11,999 ft.
MAIZE ROAD LEG = 100.49m = 330 ft.
TYLER ROAD LEG = 93.13m = 306 ft.

DATE	
BY	
REFERENCES NOTED	
REFERENCES CHECKED	



NOTE:
The dual 'Street Lights' @ STA's 18+265, 18+332 & 18+392 along north side of EB Kellogg Drive have been tied into existing Ridge Road's street lighting controller (noted as circuit 'X'). Work performed by Westar (Sept. 2003).



NOTES:
1) REVISED locations for 'Light Poles' along EB and WB Kellogg Drives were mostly due to 'New Additional' or 'Relocated' entrance drives.
2) Record drawing information for 'new additional' and 'relocated' Entrance Drives are NOT presented on these 'Lighting Plan' sheets (see 'Kellogg, Maize Road and/or Tyler Road Plan' sheets in Volume I).

NOTE:
SEE PLAN SHEETS FOR UTILITIES. THE INFORMATION SHOWN ON THE PLAN SHEETS CONCERNING TYPE AND LOCATION OF UNDERGROUND UTILITIES IS NOT GUARANTEED TO BE ACCURATE OR ALL INCLUSIVE. THE CONTRACTOR IS RESPONSIBLE FOR MAKING HIS OWN VERIFICATION AS TO THE TYPE AND LOCATION OF UNDERGROUND UTILITIES AS MAY BE NECESSARY TO AVOID DAMAGE THERETO. THE CONTRACTOR IS RESPONSIBLE FOR REPAIRING ANY DAMAGE TO UNDERGROUND UTILITIES.

No.	Revisions	By	Date
CITY OF WICHITA			
LIGHTING PLAN			
STA. 18+200 TO STA. 18+600			
SEDGWICK COUNTY			
Professional Engineering Consultants, P.A.			
303 S. TOPEKA • WICHITA, KANSAS 67202 316-262-2691 • FAX 316-262-3003			
Designed by	SMS	Checked by	SMS
Drawn by	WAN	Date	APRIL, 2002
		Job No.	97362

DSMR: WAN OPER: WAN SCALE: 500
E:/1997/97362/WK644.DGN 4-10-2002 7:33:43 LAST REV: BY: