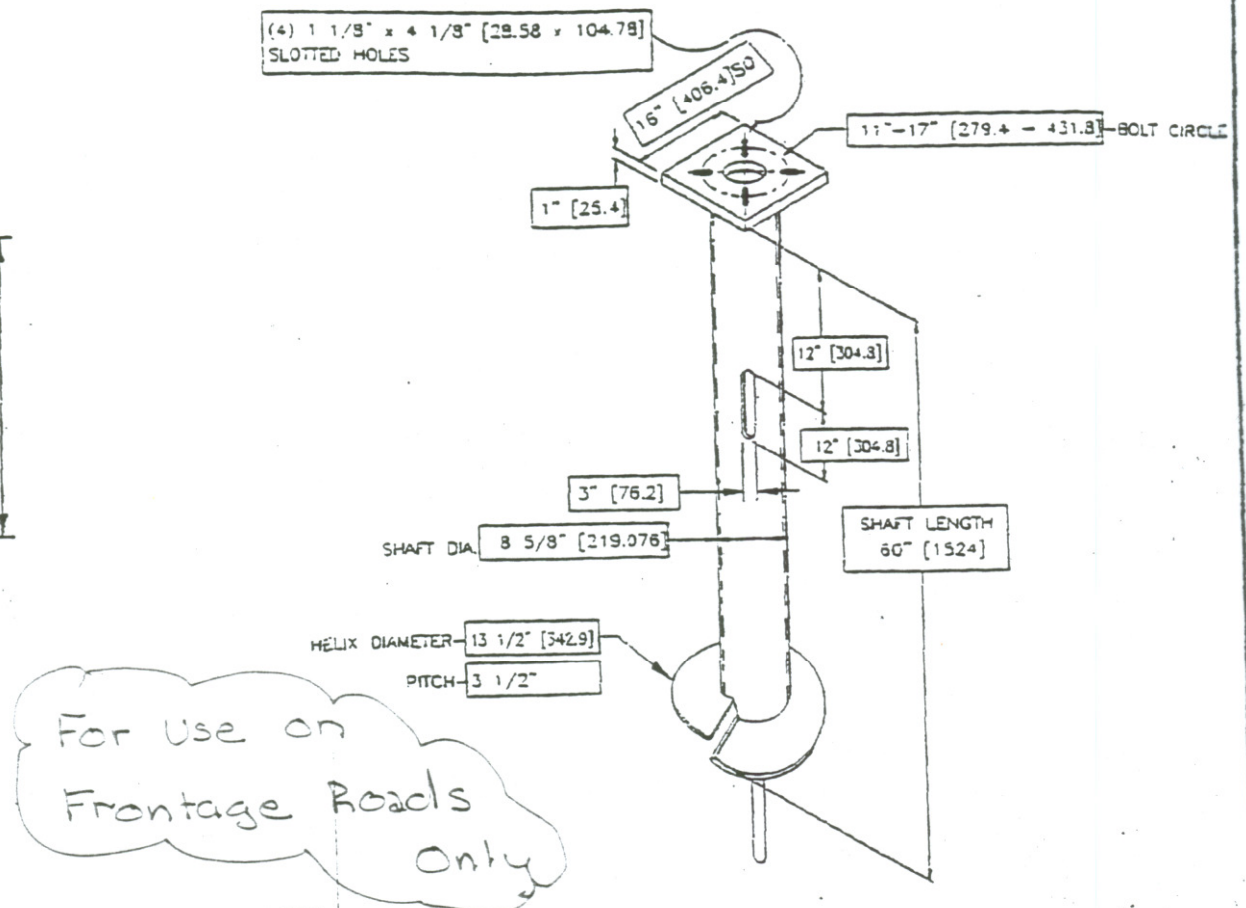
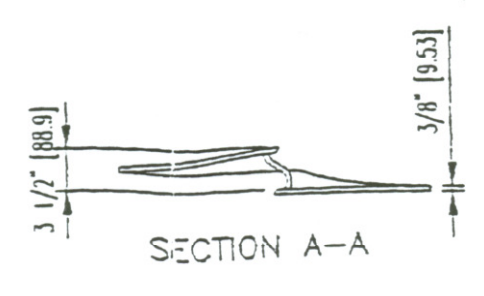
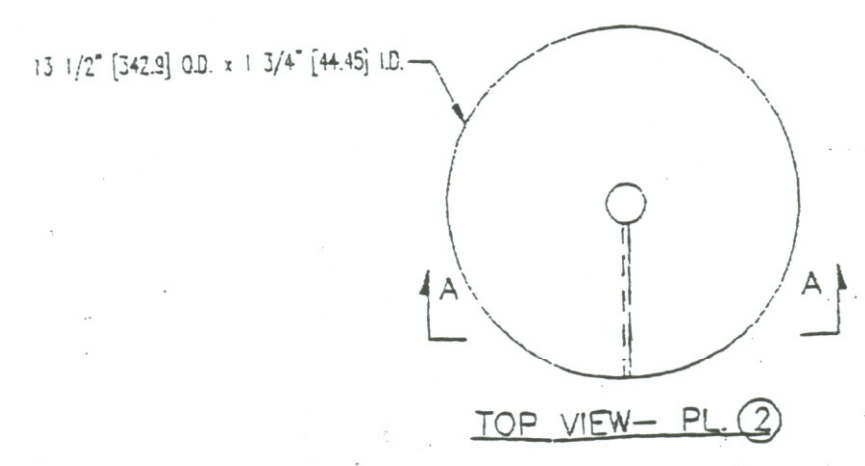
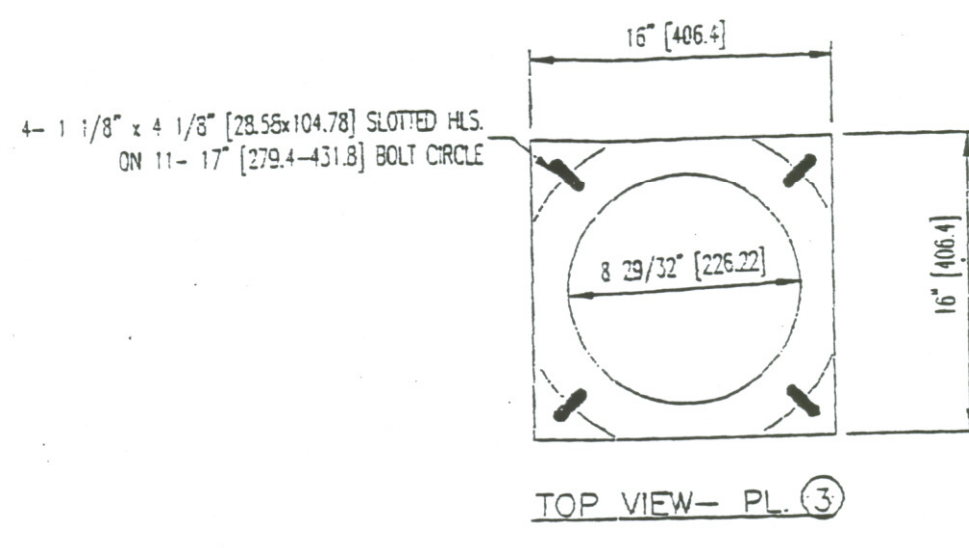
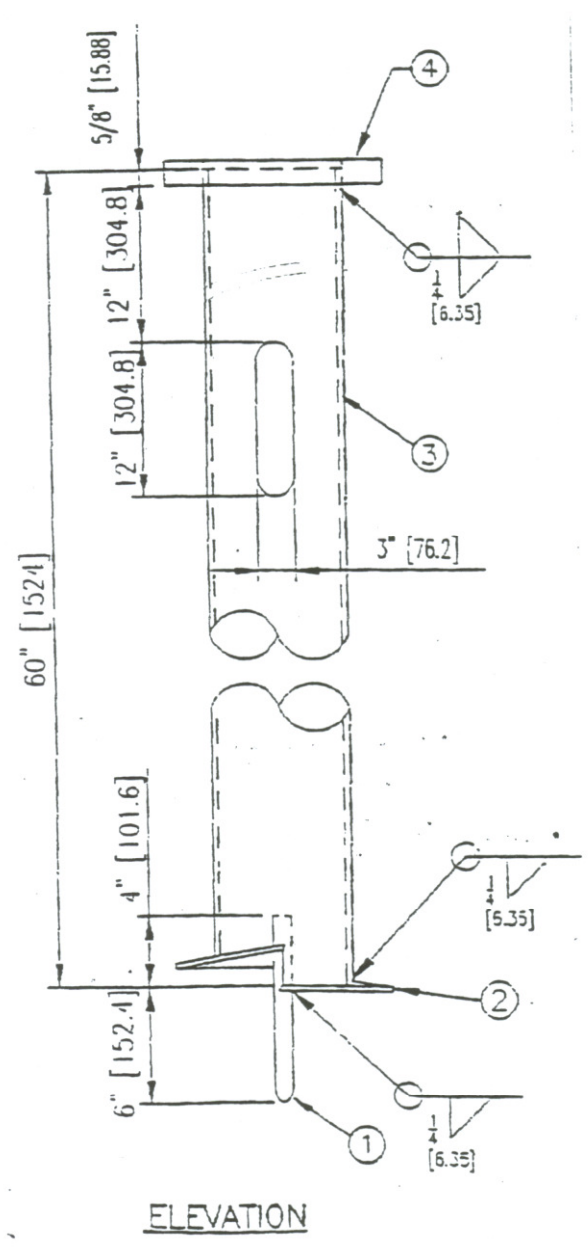


FHWA REGION NO.	STATE	PROJECT NO.	YEAR	SHEET NO.	TOTAL SHEETS
7	KANSAS	54 - 87 K - 6657 - 01	2002	651A	1122

MOUNTING HEIGHT 11" - 17" BOLT CIRCLE				MOUNTING HEIGHT 11" - 17" BOLT CIRCLE				MOUNTING HEIGHT 11" - 17" BOLT CIRCLE				MOUNTING HEIGHT 11" - 17" BOLT CIRCLE				
QTY	DESCRIPTION	MATL	WEIGHT	QTY	DESCRIPTION	MATL	WEIGHT	QTY	DESCRIPTION	MATL	WEIGHT	QTY	DESCRIPTION	MATL	WEIGHT	
1	3/8" x 10"	A36	4.30													
2	3/8 PL 13 1/2" O.D.	A36	15.40													
3	8 5/8" O.D. x 1/4" WALL x 5'-0"	A252-2	103.71													
4	1" PL 16 x 16 W 8 29/32"	A36	43.01													
4	1 1/8 x 4" HEX HD BOLT	A325	4.88													
4	1 1/8" NYL HEX NUT	A563-DH	1.70													
4	1 1/8" HARD WASHER	F436	0.36													
4	1 1/8" LOCK WASHER	MSD	0.35													
TOTAL WEIGHT			172.51	NO. OF FDNS ON THIS ORDER												



For Use on Frontage Roads Only

- NOTES:
- The welded foundation shall be capable of withstanding 10,000 ft./lbs of inspection torque applied about the axis of the foundation.
 - After fabrication:
 - The foundation shall be hot dipped galv per ASTM-A123.
 - Bolts, nuts, & washers shall be galv per ASTM-A153 Class C.
 - All foundations will be furnished with studs installed.

HELIX FOUNDATION

REVISED:	DRAWN BY: RSK	CHECKED BY:
DATE: 6/25/02		
CONTRACTOR: KANSAS DEPARTMENT OF TRANSPORTATION		
J.H. BOTTS, INC.		
253 E. BRUCE	JOLIET, IL 60432	DWG. # KS 860
		REV # -