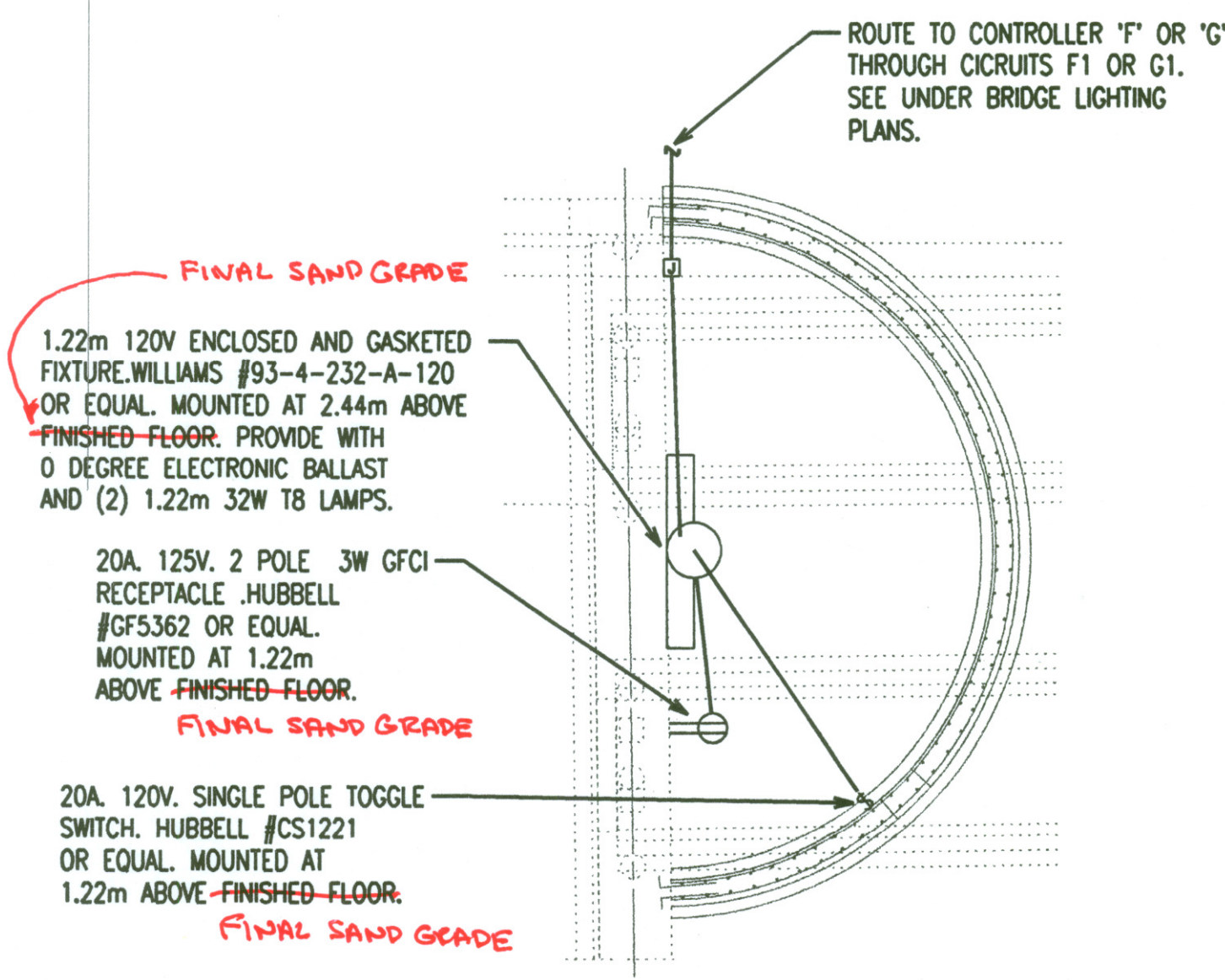


ADDENDUM #2:

Sheet 653
 1: Ground Mounted Pullbox Section: Change the inside depth from 915 mm to 1067 mm.

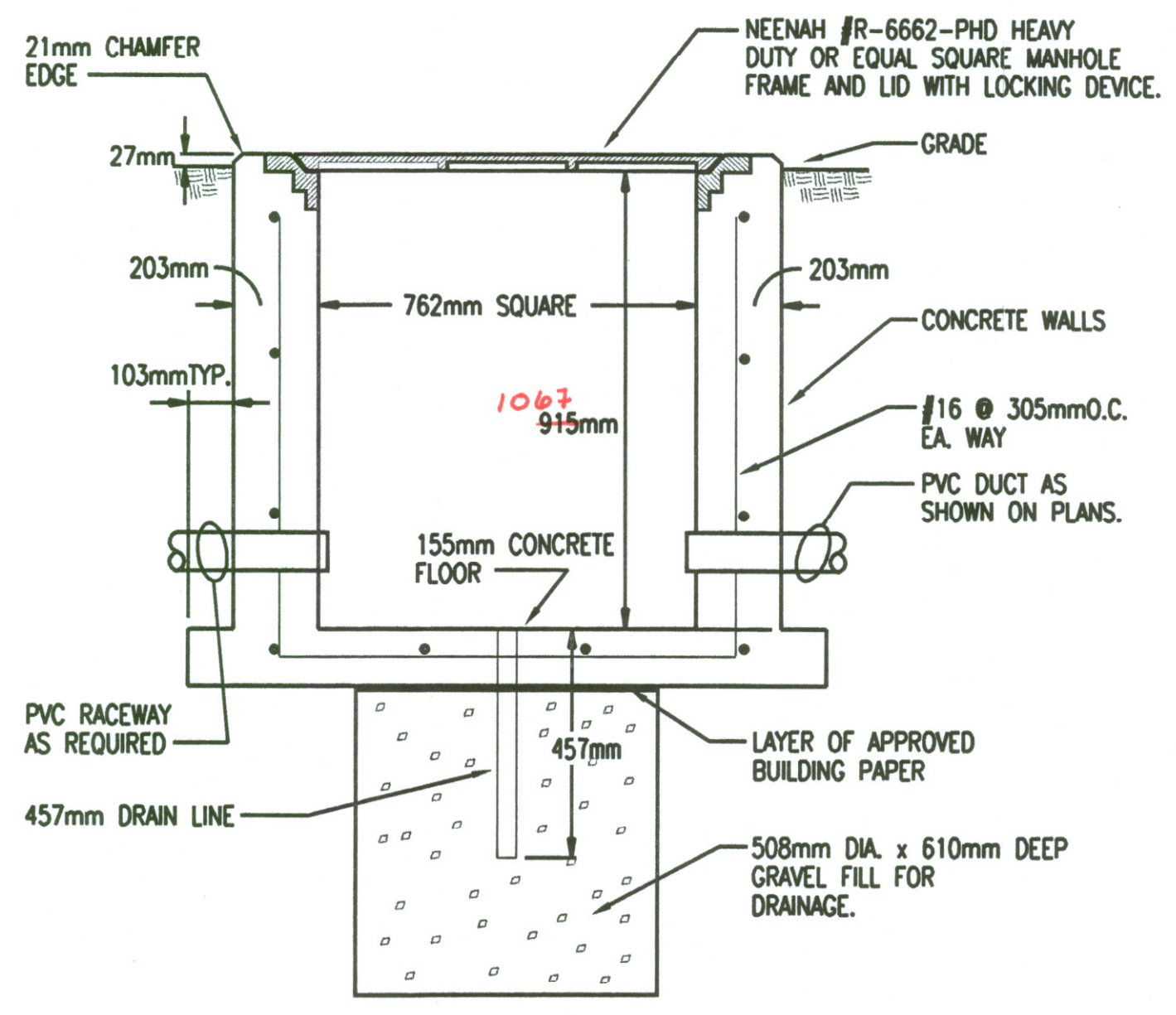
DATE	
BY	
REFERENCES NOTED	
REFERENCES CHECKED	



PLAN

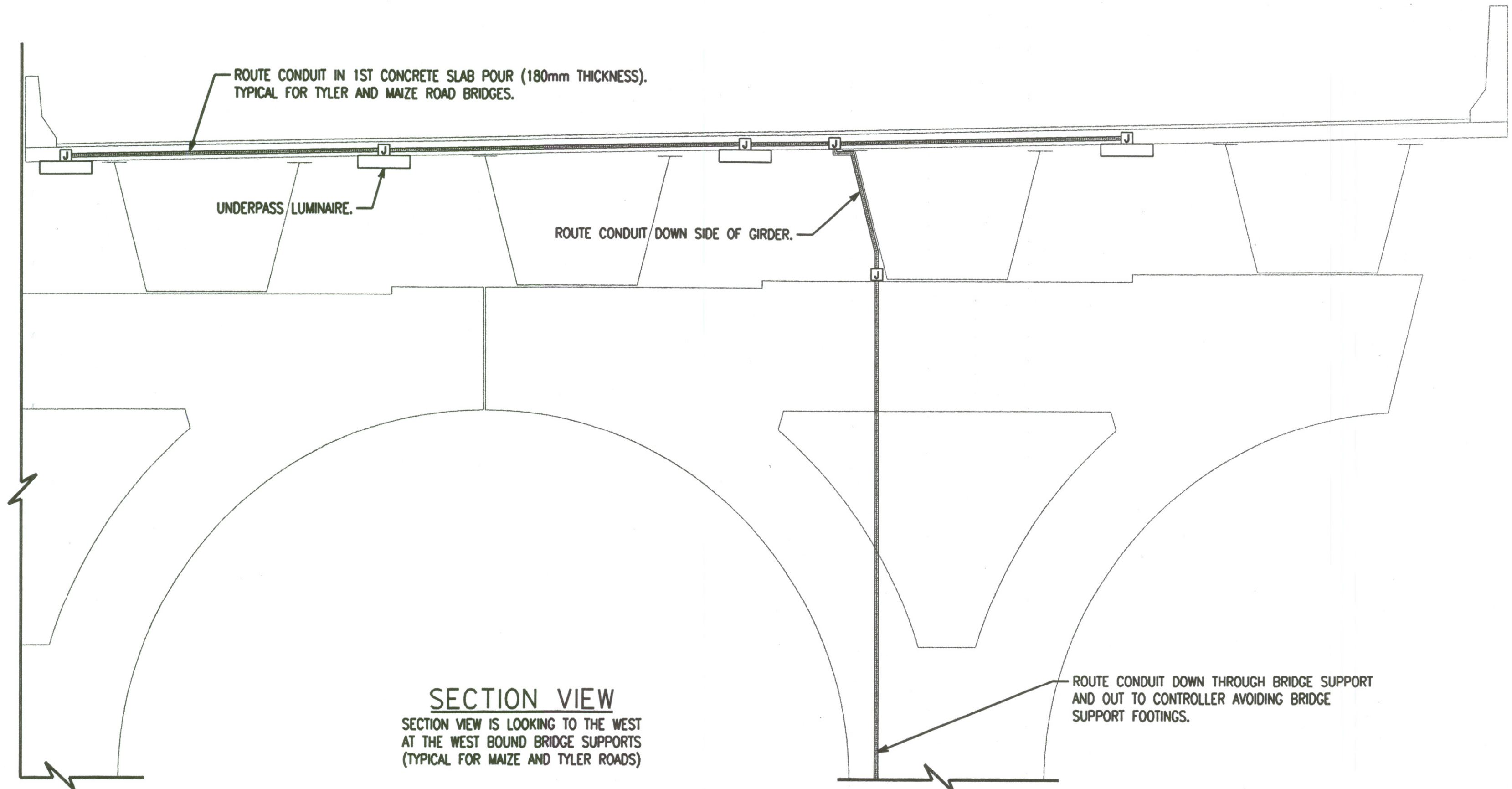
NOTE: CIRCULAR WALL DETAIL IS SIMILAR FOR ALL 4 LOCATIONS AT THE TYLER ROAD BRIDGE AND THE 4 LOCATIONS AT THE MAIZE ROAD BRIDGE.

1 CIRCULAR WALL DETAIL
NO SCALE



NOTE: WHERE PULLBOX IS MOUNTED IN PAVEMENT, TOP SHALL BE FLUSH WITH PAVEMENT.

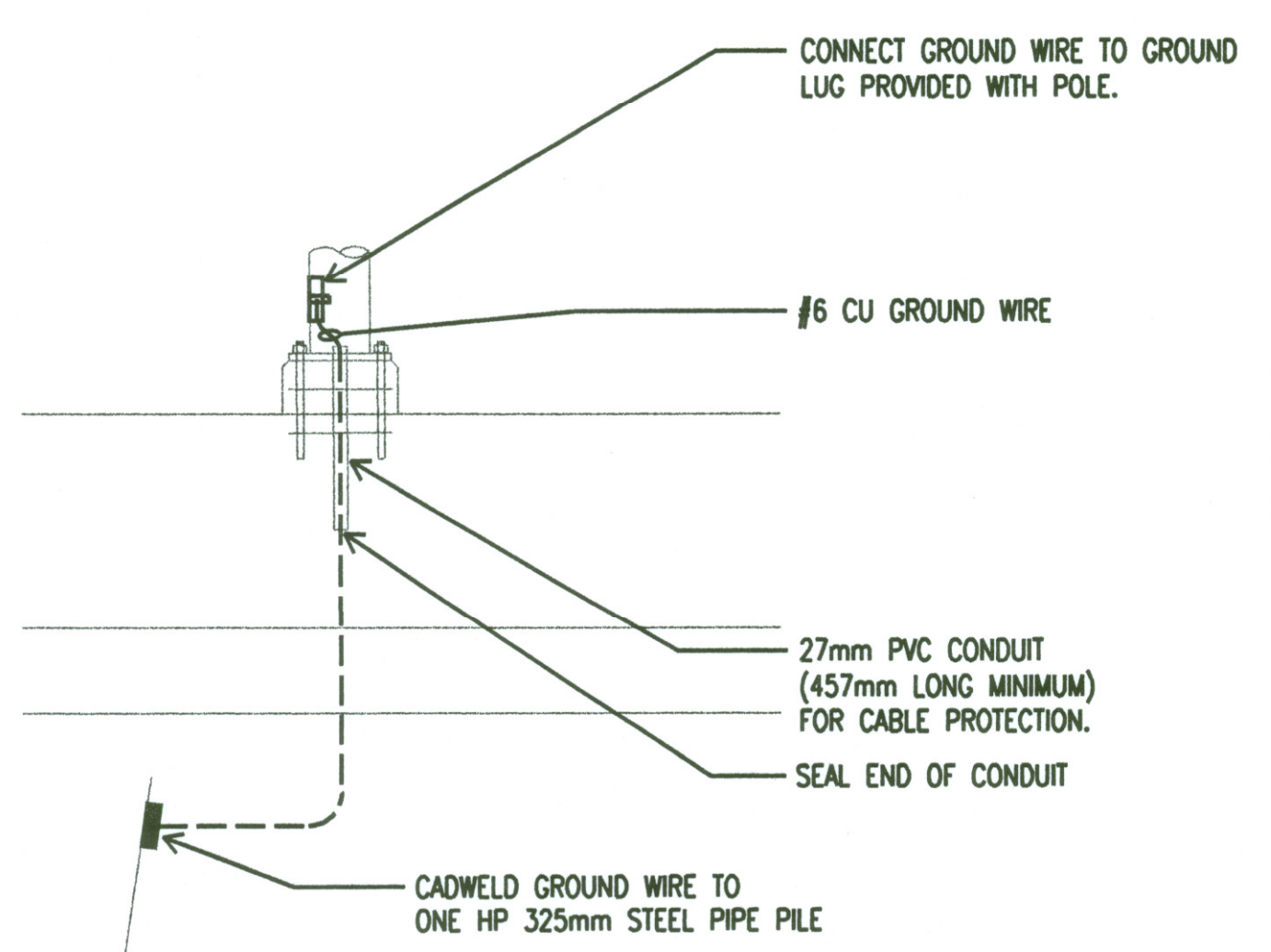
2 GROUND MOUNTED PULLBOX SECTION
NO SCALE



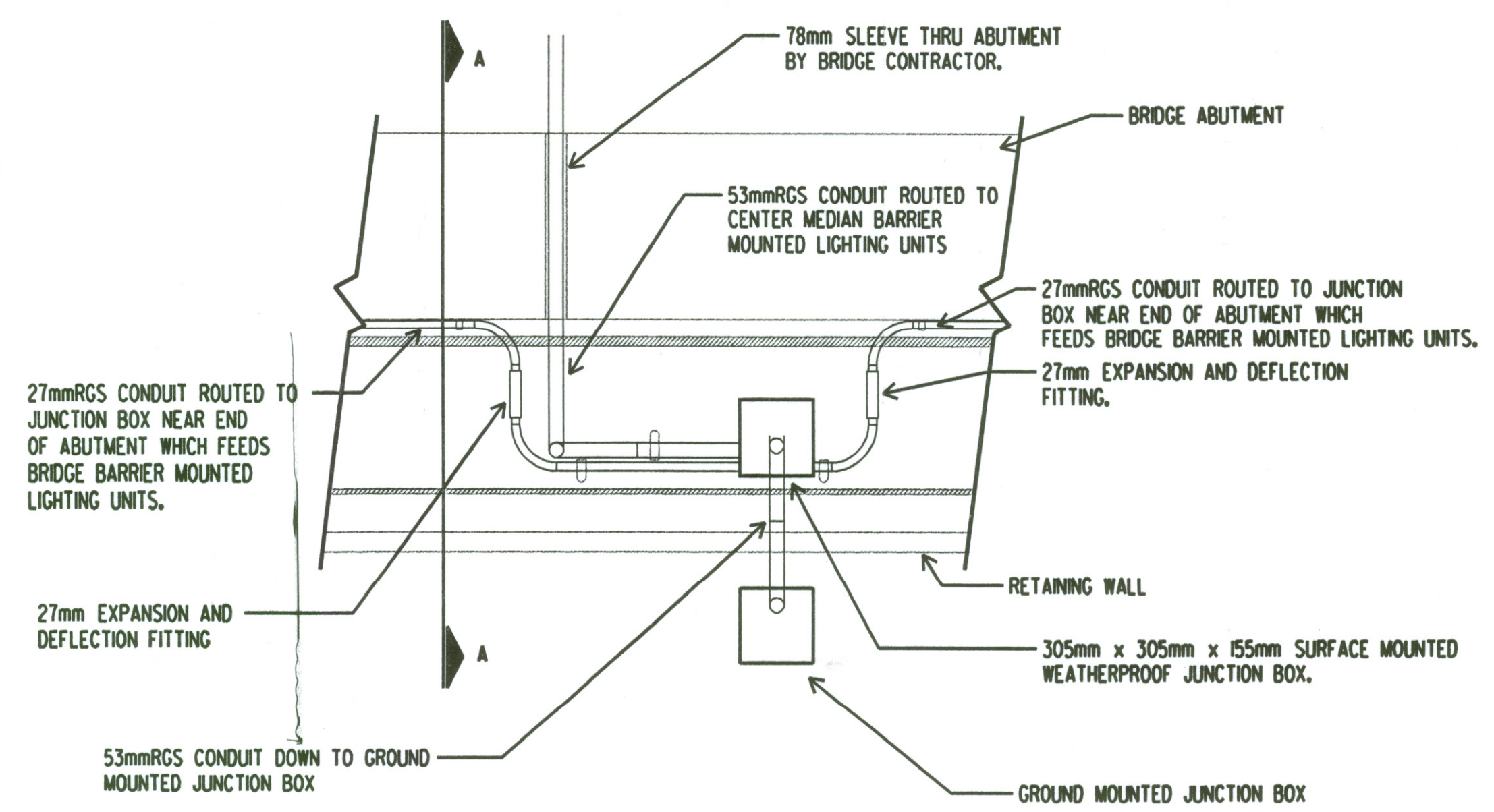
SECTION VIEW

SECTION VIEW IS LOOKING TO THE WEST AT THE WEST BOUND BRIDGE SUPPORTS (TYPICAL FOR MAIZE AND TYLER ROADS)

3 BRIDGE LIGHTING DETAIL
NO SCALE

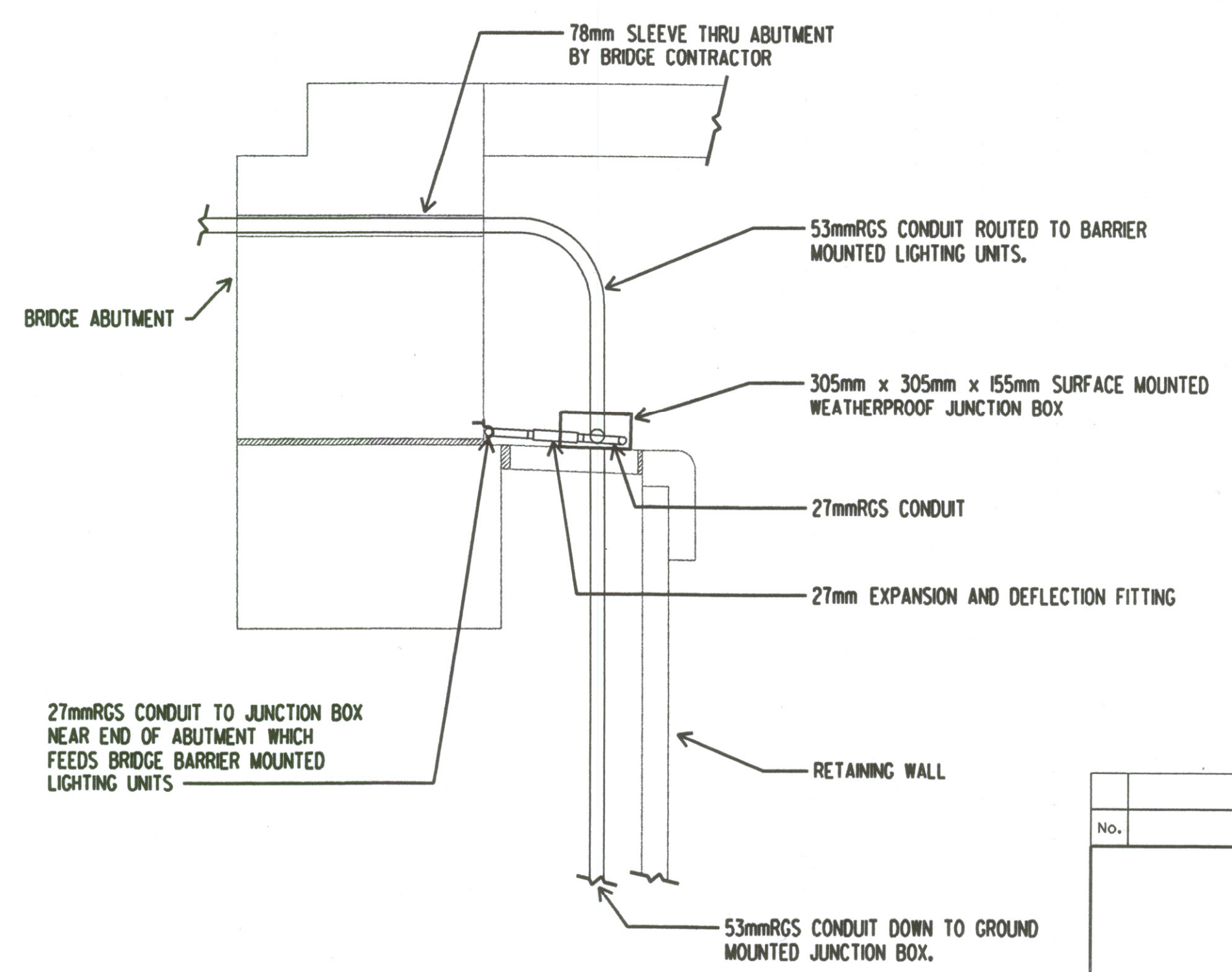


4 POLE GROUNDING DETAIL
N.T.S.



5 BRIDGE ABUTMENT DETAIL
NO SCALE
MAIZE & TYLER BRIDGES

NOTE: 27mm EXPANSION AND DEFLECTION FITTINGS SHALL PROVIDE MINIMUM 2mm MOVEMENT FROM THE NORMAL IN ALL DIRECTIONS AND 30 DEGREE DEFLECTION FROM THE NORMAL IN ANY DIRECTION.



6 SECTION A-A BRIDGE ABUTMENT DETAIL
NO SCALE
MAIZE & TYLER BRIDGES

DSMR: WAN OPER: WAN SCALE: I:500
 E:1997/97362/WK4653.DGN 4-II-2002 13:54:39 LAST REV: BY:

No.	Revisions	By	Date
CITY OF WICHITA			
LIGHTING DETAILS			
SEDGWICK COUNTY			
Professional Engineering Consultants, P.A. 303 S. TOPEKA • WICHITA, KANSAS 67202 316-262-2691 • FAX 316-262-3003			
Designed by	SMS	Checked by	SMS
Drawn by	WAN	Date	APRIL, 2002
		Job No.	97362