

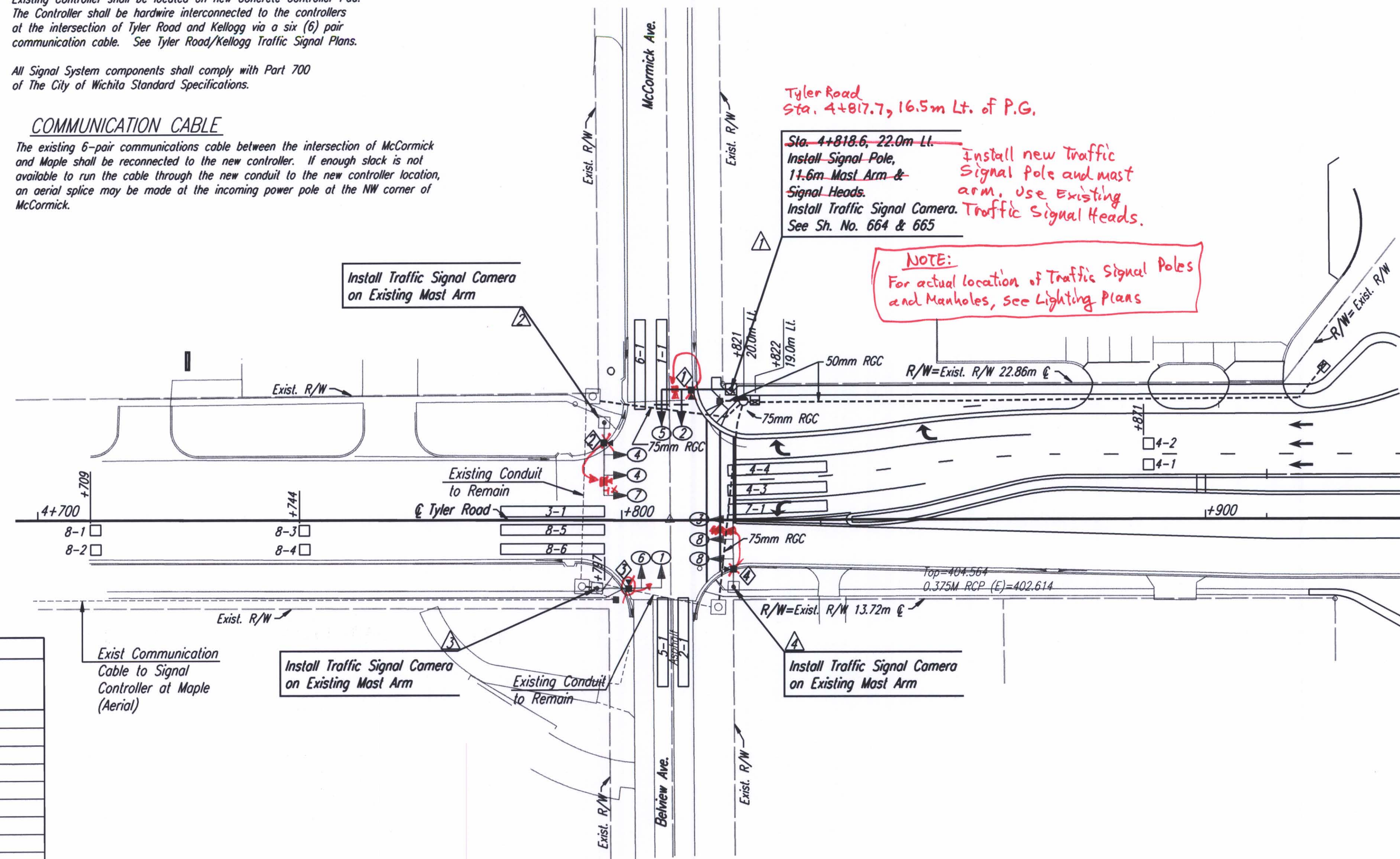
TRAFFIC CONTROLLER DESCRIPTION

Existing Controller shall be located on new Concrete Controller Pod. The Controller shall be hardwire interconnected to the controllers at the intersection of Tyler Road and Kellogg via a six (6) pair communication cable. See Tyler Road/Kellogg Traffic Signal Plans.

All Signal System components shall comply with Part 700 of The City of Wichita Standard Specifications.

COMMUNICATION CABLE

The existing 6-pair communications cable between the intersection of McCormick and Maple shall be reconnected to the new controller. If enough slack is not available to run the cable through the new conduit to the new controller location, an aerial splice may be made at the incoming power pole at the NW corner of McCormick.



DATE	
BY	
REFERENCES NOTED	
REFERENCES CHECKED	

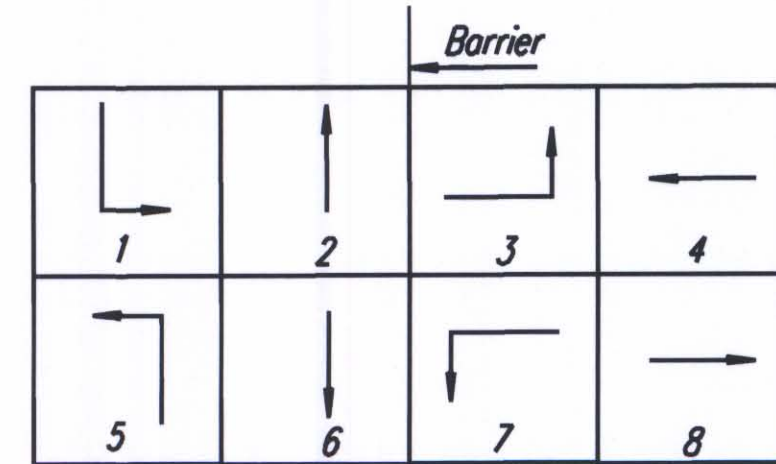
CAMERA NO.	DETECTION ZONE	MODE	SIZE (LxW)	PHASE CALLED	PHASE EXTENDED	DELAY/STRETCH TIMER	INITIAL SETTING (SEC.)
1	2-1	Presence	15x1.8	2	2	Delay	6.0
1	5-1	Presence	15x1.8	5	5		
2	4-1,2	Pulse	1.8x1.8	4	4	Stretch	1.0
2	4-3	Presence	18x1.8	4	4		
2	4-4	Presence	18x1.8	4	4		
2	7-1	Presence	18x1.8	7	7		
3	1-1	Presence	15x1.8	1	1		
3	6-1	Presence	15x1.8	6	6	Delay	6.0
4	8-1,2	Pulse	1.8x1.8	8	8	Stretch	1.0
4	8-3,4	Pulse	1.8x1.8	8	8	Stretch	1.0
4	8-5	Presence	18x1.8	8	8		
4	8-6	Presence	18x1.8	8	8	Delay	6.0
4	3-1	Presence	18x1.8	3	3		

	PHASE							
	1	2	3	4	5	6	7	8
MAX. I	15	15	15	90	15	15	15	90
MAX. II/HFDW	15	15	15	90	15	30	15	90
WALK	-	8	-	8	-	8	-	8
FLASH DW	-	20	-	12	-	16	-	12
MAX. INITIAL	6.0	6.0	6.0	20	6.0	6.0	6.0	20
MIN. GREEN	6.0	6.0	6.0	20	6.0	6.0	6.0	20
T B R	15	15	15	90	15	15	15	90
T T R	-	-	-	-	-	-	-	-
OBSERVE GAP	-	-	-	-	-	-	-	-
PASSAGE	1.0	1.0	2.0	2.0	1.0	1.0	2.0	2.0
MIN. GAP	1.0	1.0	2.0	2.0	1.0	1.0	2.0	2.0
ADDED ACTUATION	1.0	1.0	1.0	1.0	1.0	1.0	1.0	1.0
YELLOW	3.2	3.2	3.9	3.9	3.2	3.2	3.9	3.9
RED CLEAR	2.5	3.0	2.0	2.0	2.5	3.0	2.0	2.0
RED REVERT	-	-	-	-	-	-	-	-
WALK II	-	-	-	-	-	-	-	-

Ø4 & Ø8 to dwell green

FUNCTION	PHASE							
	1	2	3	4	5	6	7	8
VEHICLE RECALL								x
PED RECALL								
RED LOCK								
YELLOW LOCK	x	x	x	x	x	x	x	x
PERMIT	x	x	x	x	x	x	x	x
PED PHASES								x
LEAD PHASES	x							x
DOUBLE ENTRY		x				x		x
SEQUENTIAL TIMING								
START-UP YELLOW		x				x		
OVERLAP A								
OVERLAP B								
OVERLAP C								
OVERLAP D								
EXCLUSIVE								
SIMULTANEOUS GAP								

ROADWAY	STATION	DIST. - SIDE
TYLER	4+820	17m LT.



PHASE DIAGRAM

- APPROVED SUBMITTALS:**
- # 57.1 - Traffic Signal Equipment.
 - # 57.2 - Misc. Traffic Signal Equipment - (Conduit, Wire, Boxes).
 - # 57.3 - Traffic Signal Poles.
 - # 85 - McCormick Signal Pole & Mast Arm @ S.E. Corner.

- LEGEND**
- ☐ Traffic Signal Pole with Mast Arm
 - Traffic Signal Pedestal
 - ☼ Luminaire with Arm (See Lighting Plan)
 - ← Traffic Signal Head
 - ← Traffic Signal Head with Backplate
 - ☐ Pedestrian Signal Head
 - ☐ Controller with pod
 - Service Box
 - ☐ Traffic Signal Camera
 - 1-1 ☐ Camera Zone
 - 1-1 ☐ Camera Zone
 - Y R10-10 Sign
 - X R10-12 Sign
 - Rigid Galvanized Conduit (RGC)
 - ② Signal Phase
 - ▲ Signal Pole Reference Number
 - ▲ Street Name Sign
 - ▲ Camera Reference Number

UTILITIES
See Plan Sheet for Utilities.

Revised SE Return at McCormick		WDH	5-05-04
No.	Revisions	By	Date
CITY OF WICHITA			
TRAFFIC SIGNAL MODIFICATION TYLER ROAD & MCCORMICK AVE.			
SEDGWICK COUNTY			
Professional Engineering Consultants, P.A.			
303 S. TOPEKA • WICHITA, KANSAS 67202 316-262-2691 • FAX 316-262-3003			
Designed by	RPG	Checked by	BER
Drawn by	JGP	Date	April, 2002
		Job No.	97362

DSNR: WDH OPER: JGP SCALE: 1:500
 I:/1997/97362/SIGNALS/McCormickSEReturnRevised.DGN 5-5-2004 16:24:17PM LAST REV: 5-5-2004 BY: CKC