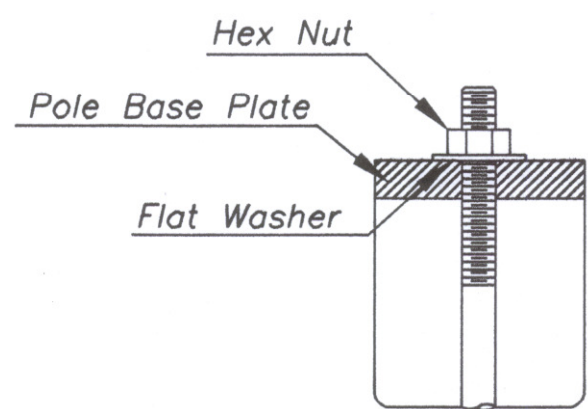
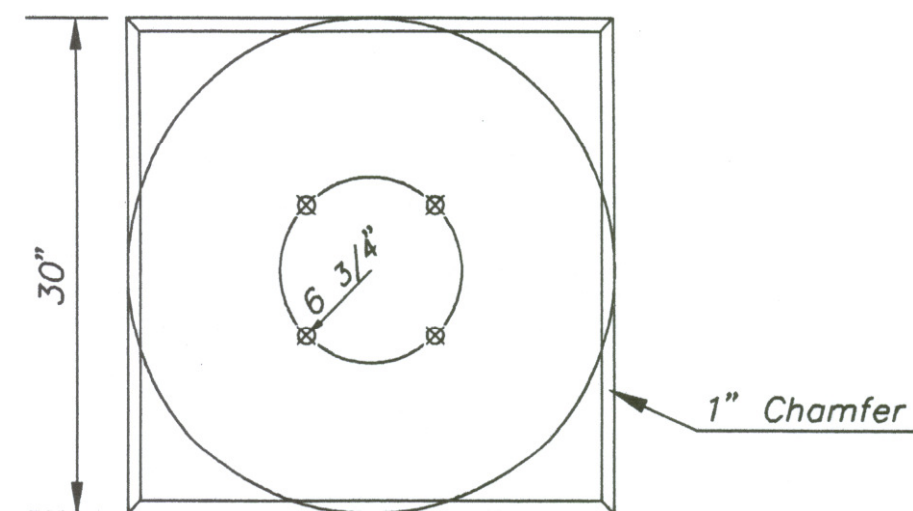


Use Keystone "No-Weld Number 1 Anti-Seize Compound" on all bolts & nuts.

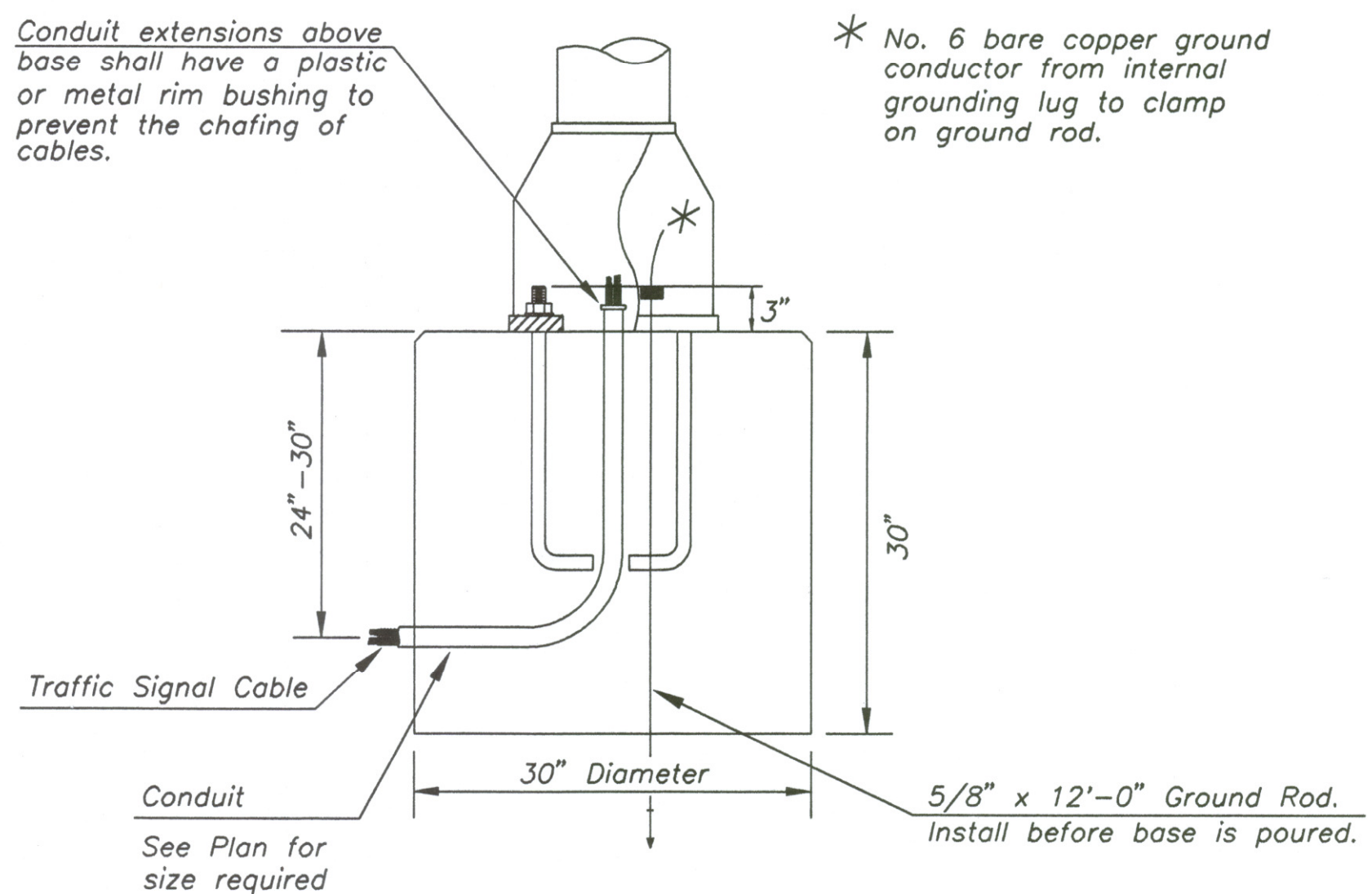


**ANCHOR BOLT DETAIL**



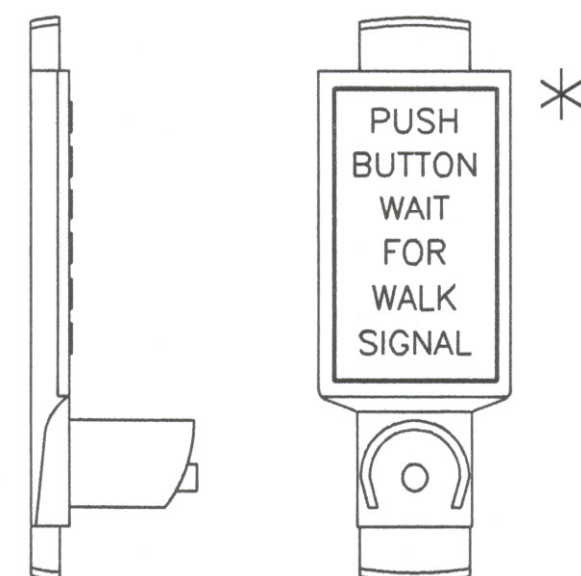
Conduit extensions above base shall have a plastic or metal rim bushing to prevent the chafing of cables.

\* No. 6 bare copper ground conductor from internal grounding lug to bushing on ground rod.



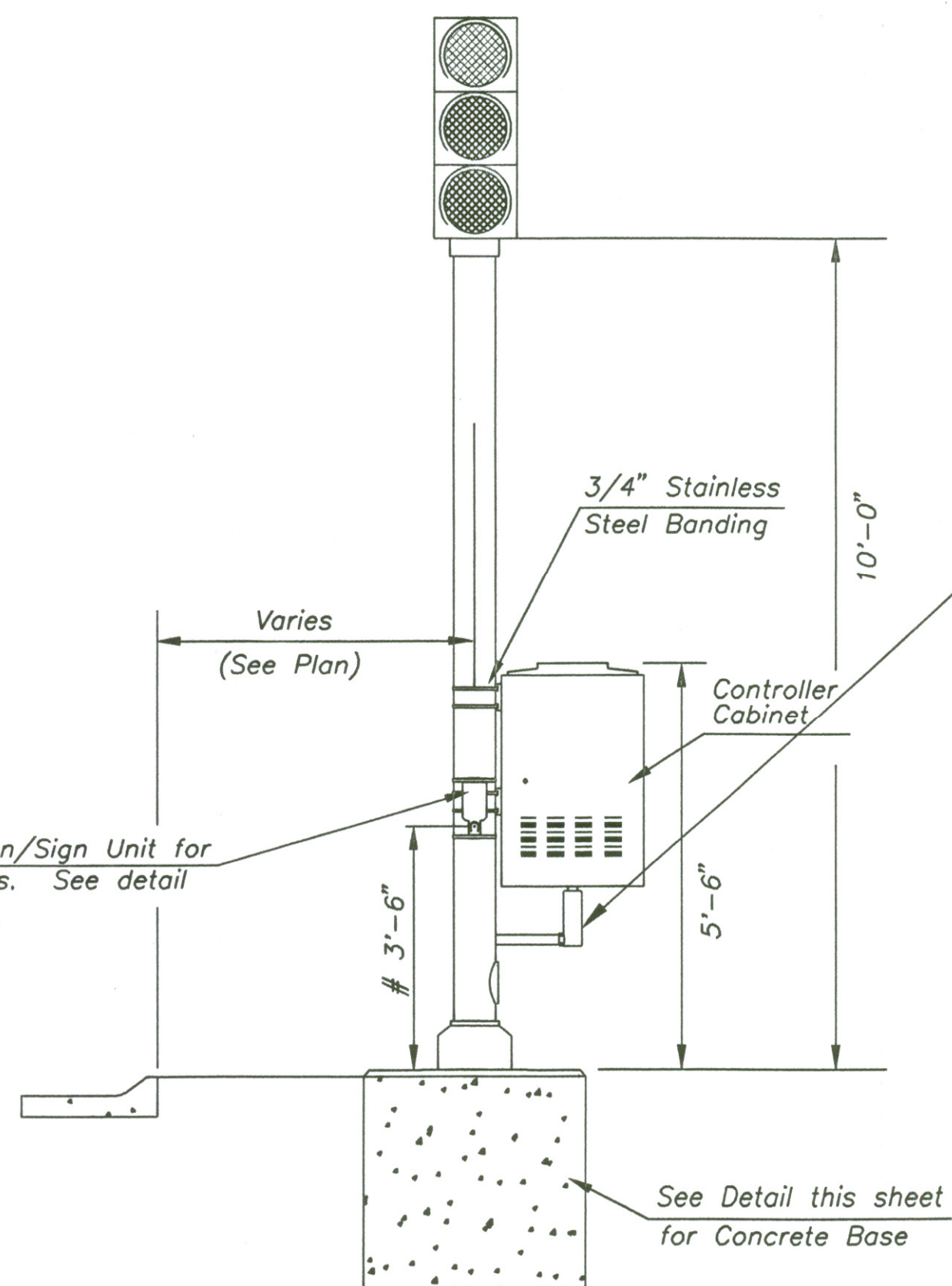
**CONCRETE BASE DETAIL**

\*NOTE: MESSAGE TO BE CAST WITH HOUSING (ONE PIECE)

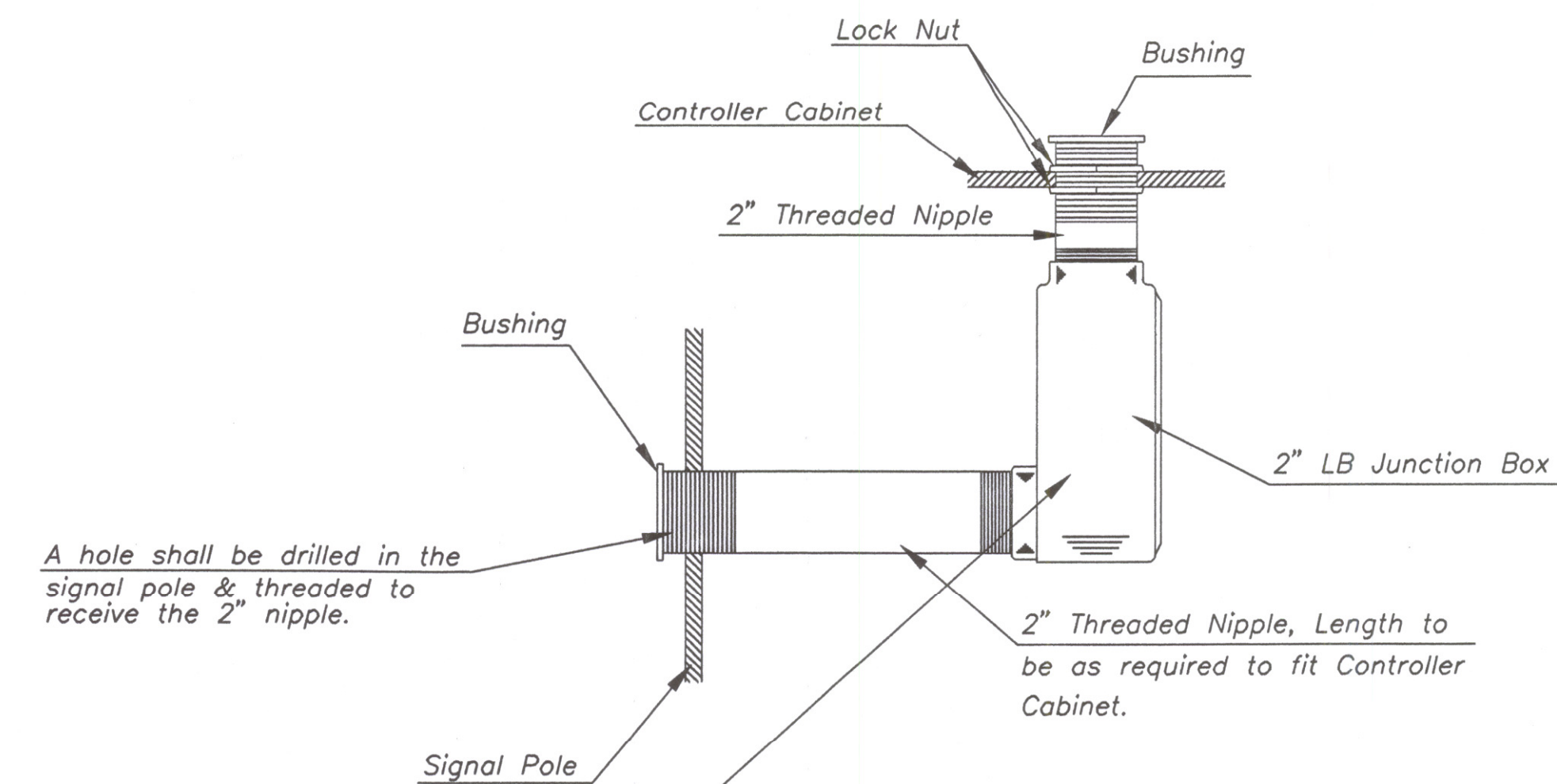


**PEDESTRIAN PUSHBUTTON/SIGN UNIT DETAIL**

INSTALL PEDESTRIAN PUSHBUTTON UNDERNEATH CORRESPONDING PEDESTRIAN SIGNAL HEAD ON SIDE OF POLE NEAREST CROSSWALK. UNIT SHALL BE FIRMLY ATTACHED TO THE SIDE OF POLE WITH 3/4" STEEL BANDS. SHARP ENDS SHALL BE FOLDED UNDER TO PREVENT INJURY TO PEDESTRIANS.



**TRAFFIC SIGNAL PEDESTAL**



A hole shall be drilled in the signal pole & threaded to receive the 2" nipple.

2" Threaded Nipple, Length to be as required to fit Controller Cabinet.

# From Sidewalk Finish Grade to Center of Pushbutton.

DRAWN: JMG, JGP, JAP, JAL, JAW, JAZ, JBA, JBC, JBD, JBE, JBF, JBH, JBI, JBJ, JBL, JBM, JBN, JBW, JBY, JCA, JCB, JCC, JCD, JCE, JCF, JCH, JCI, JCJ, JCL, JCM, JCN, JCW, JCY, JDA, JDB, JDC, JDD, JDE, JDF, JDH, JDI, JDJ, JDL, JDM, JDN, JDW, JDY, JEA, JEB, JEC, JED, JEE, JEF, JEH, JEI, JEJ, JEL, JEM, JEN, JEW, JEY, JFA, JFB, JFC, JFD, JFE, JFF, JFH, JFI, JFJ, JFL, JFM, JFN, JFW, JFY, JGA, JGB, JGC, JGD, JGE, JGF, JGH, JGI, JGJ, JGL, JGM, JGN, JGW, JGY, JHA, JHB, JHC, JHD, JHE, JHF, JHG, JHI, JHJ, JHL, JHM, JHN, JHW, JHY, JIA, JIB, JIC, JID, JIE, JIF, JIH, JII, JIJ, JIL, JIM, JIN, JIW, JIY, JJA, JJB, JJC, JJD, JJE, JJF, JJH, JJI, JJJ, JJL, JJM, JJN, JJW, JJY, JKA, JKB, JKC, JKD, JKE, JKF, JKH, JKI, JKJ, JKL, JKM, JKN, JKW, JKY, JLA, JLB, JLC, JLD, JLE, JLF, JLH, JLI, LJL, LJM, LJN, LJW, LJY, JMA, JMB, JMC, JMD, JME, JMF, JMH, JMI, MJL, JMM, MJN, MJW, MJY, JNA, JNB, JNC, JND, JNE, JNF, JNH, JNI, JNJ, JNL, JNM, JNN, JNW, JNY, JOA, JOB, JOC, JOD, JOE, JOF, JOH, JOI, JOJ, JOL, JOM, JON, JOW, JOY, JPA, JPB, JPC, JPD, JPE, JPF, JPH, JPI, JPJ, JPL, JPM, JPN, JPW, JPY, JQA, JQB, JQC, JQD, JQE, JQF, JQH, JQI, JQJ, JQL, JQM, JQN, JPW, JPY, JRA, JRB, JRC, JRD, JRE, JRF, JRH, JRI, RJL, JRM, JRN, JRW, JRY, JSA, JSB, JSC, JSD, JSE, JSF, JSH, JSI, JSJ, JSL, JSM, JSN, JSW, JSY, JTA, JTB, JTC, JTD, JTE, JTF, JTH, JTI, JTJ, JTL, JTM, JTN, JTW, JTY, JUA, JUB, JUC, JUD, JUE, JUF, JUH, JUI, JUJ, JUL, JUM, JUN, JUW, JUY, JVA, JVB, JVC, JVD, JVE, JVF, JVH, JVI, JVJ, JVL, JVM, JVN, JVW, JVY, JWA, JWB, JWC, JWD, JWE, JWF, JWH, JWI, JWJ, JWL, JWM, JWN, JWY, JXA, JXB, JXC, JXD, JXE, JXF, JXH, JXI, JXJ, JXL, JXM, JXN, JXW, JXY, JYA, JYB, JYC, JYD, JYE, JYF, JYH, JYI, JYJ, JYL, JYM, JYN, JYW, JYX, JZA, JZB, JZC, JZD, JZE, JZF, JZH, JZI, JZJ, JZL, JZM, JZN, JZW, JZX, JZY

<p>THE CITY OF WICHITA CITY ENGINEER'S OFFICE CITY HALL - SEVENTH FLOOR 455 NORTH MAIN STREET WICHITA, KANSAS 67202 (316) 268-4501 (316) 268-4114 FAX</p>	PROJECT DESCRIPTION <b>TRAFFIC SIGNAL PEDESTAL &amp; CONCRETE BASE DETAIL SHEET</b>		
	PROJECT NUMBER		
	DRAWN BY: T.M. DATE: April, 2002	SCALE NO SCALE	REVISED BY: DATE:
	CITY OF WICHITA DEPARTMENT OF PUBLIC WORKS		
DIVISION OF TRAFFIC ENGINEERING		SHEET 666 OF 1122	
WM. G. MCKINLEY P.E. TRAFFIC ENGINEER			