

FHWA REGION NO.	STATE	PROJECT NO.	YEAR	SHEET NO.	TOTAL SHEETS
7	KANSAS	54-87 K-6657-01	2002	669	1122

Record Drawings IV

VOLUME I

- 1 Title Sheet
- 2 Index of Sheets
- 3-6 Typical Section - Mainline
- 7-11 Typical Section - Sideroads
- 12 Foundation Treatment and Compaction of Earthwork
- 13-14 Superelevation and Cross-slope Transition Diagrams
- 15 General Notes
- 16-63 Plan, Geometric Coordinate, and Profile Sheets (US-54)
- 64-69 Plan and Profile Sheets (Maize Road)
- 70-75 Plan and Profile Sheets (Tyler Road)
- 76-81 Ramp Profiles
- 82-92 Intersection Details
- 93-116 Paving Plans
- 117-126 Concrete Bridge Approach Pavement Details
- 127-134 Pavement Details
- 135-146 Inlet and Manhole Details
- 147 Edge Drain Details (Deleted)
- 148-150 Headwall Details
- 151-162 Storm Sewer Plans
- 163-180 Storm Sewer Profiles
- 181-195 Storm Sewer Schedules
- 196-227 Waterline Plans, Profiles, and Details
- 228-233 Concrete Safety Barrier Details
- 234-236 QuadGuard Details

VOLUME II

- 237 Index of Sheets
- 238 Cast in Place Retaining Walls General Notes
- 238A Planter Wall Details
- 239 Cast-in-place Retaining Walls Architectural Details
- 240-250 Retaining Wall and Planter Plans (Cast-In-Place)
- 251 Planter Wall Handrail Details
- 252-270 Retaining Wall and Planter Elevations (Cast-In-Place)
- 271-364 Retaining Wall and Planter Details (Cast-In-Place)
- 365-368 Retaining Wall #9 Details
- 369-374 Retaining Wall #10 Details
- 375-376 MSE Retaining Wall General Notes
- 377-386 MSE Retaining Wall Plans and Profiles
- 387 Metal End Section
- 388 Concrete End Sections
- 389-397 2-2.4x0.9 RCB Details (Sta 14+443.483)
- 398-399 1.8x0.9 RFB Details (Sta 15+407.000)
- 400-410 2.4x1.8 RFB Details (Sta 17+090.000)
- 411-417 3.4x2.4 RFB Details (Sta .17+121.754 to 17+420)
- 418 RCB Transition Details (3.4x2.4 to 3.0x2.1)
- 419-425 3.0x2.1RCB Details (Sta 17+423 to 17+776)
- 426-427 2.1x1.2 RCB Details (Maize Sta. 4+146)
- 428-429 2.1x1.2 RCB Details (Tyler Sta. 5+311)
- 430-433 RCB Standard Details

VOLUME III

- 434 Index of Sheets
- 435-476 Bridge No. 54-87-19.05 (489) W.B. & Bridge No. 54-87-19.06(491) E.B.
- 477-498 Bridge No. 54-87-19.32(495) F.W.B.
- 499-531 Bridge No. 54-87-19.30(493) E.B. & Bridge No. 54-87-19.31(494) W.B.
- 532-564 Bridge No. 54-87-19.29(492) F.E.B.
- 565-606 Bridge No. 54-87-20.13(496) W.B. & Bridge No. 54-87-20.12(497) E.B.
- 607-611 Bridge Standards
- 612-623 Summary of Quantities
- 624 Earthwork Balances
- 625 Recapitulation of Quantities
- 626-631 Temporary Project Water Pollution Control (Soil Erosion)
- 632-654 Lighting Plans and Details
- 655-668 Traffic Signals

VOLUME IV

- 669 Index of Sheets
- 670-792 Signing and Pavement Marking
- 793-794 Construction Sequence
- 795-823 Traffic Control
- 823A Traffic Control
- 824-846 Traffic Control
- 847-894 Landscaping and Irrigation Plans and Details
- 894A Wetland Mitigation Plan
- 895-896 Drainage Maps

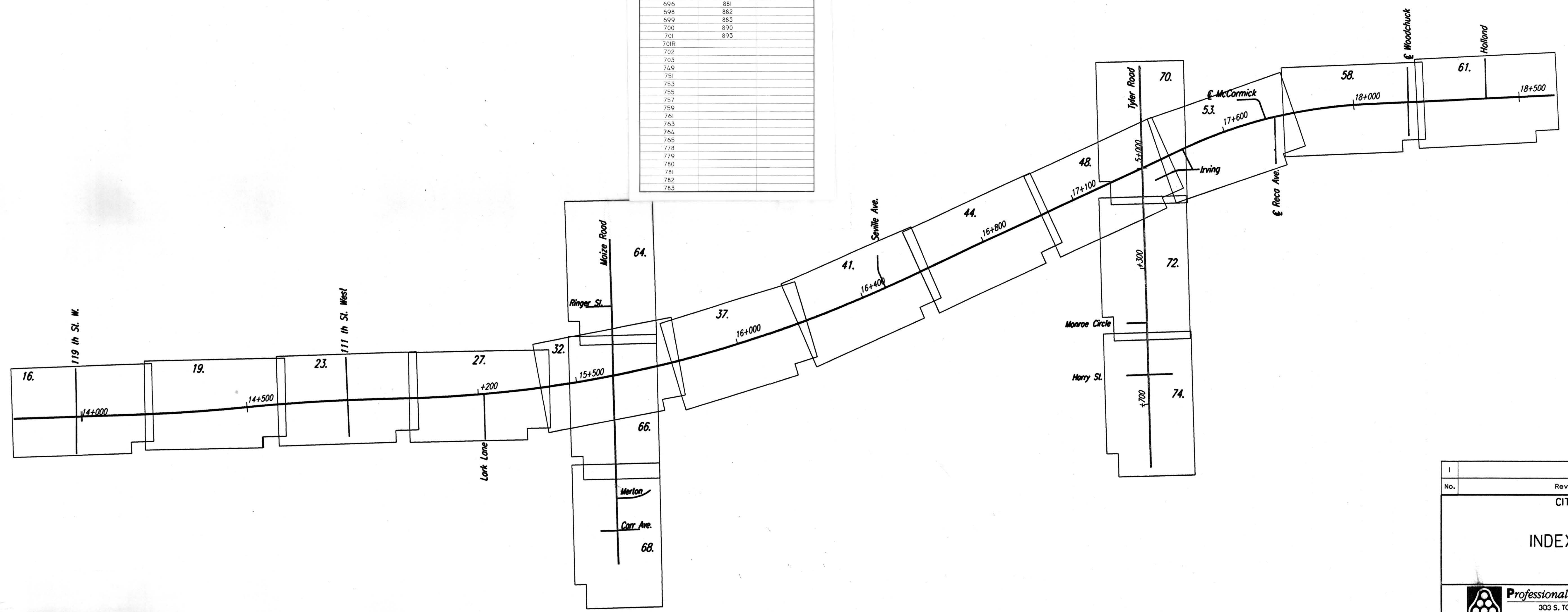
VOLUME V

- 897 Index of Sheets
- 898-1048 Cross Sections - Mainline and Frontage Roads
- 1049-1060 Cross Sections - Cowskin
- 1061-1081 Cross Sections - Maize Road
- 1082-1106 Cross Sections - Tyler Road
- 1107-1110 Cross Sections - Woodchuck
- 1111-1114 Cross Sections - Seville
- 1115 Cross Sections - Lark
- 1116 Cross Sections - Irving
- 1117-1118 Cross Sections - Holland
- 1119-1120 Cross Sections - Channel Change at Sta. 14+425
- 1121-1122 Cross Sections - Channel Change at Sta. 17+090

SHEET INDEX FOR RECORD DRAWING EDITS

WEST KELLOGG FREEWAY
MAIZE & TYLER ROAD INTERCHANGES PROJECT
CITY OF WICHITA PROJECT NUMBER: 472-85533

VOLUME	SHEET #
669A	784
670	785
680	786
681	787
682	788
683	792
683R	819
684	821
685	871
686	872
687	875
688	876
689	877
690	878
691	879
692	880
696	881
698	882
699	883
700	890
701	893
701R	
702	
703	
749	
751	
753	
755	
757	
759	
761	
763	
764	
765	
778	
779	
780	
781	
782	
783	



No.	Revisions	By	Date
CITY OF WICHITA			
INDEX OF SHEETS			
SEDGWICK COUNTY			
Professional Engineering Consultants, P.A. 303 S. TOPKA • WICHITA, KANSAS 67202 316-262-2691 • FAX 316-262-3003			
Designed by	WDH	Checked by	
Drawn by	JGP	Date	April, 2002
		Job No.	973F2

RECORD DRAWING SET

BY: 1/19/97/97302/INDEX.DWG 11-23 1088 7-16-30 1ACT DEL.