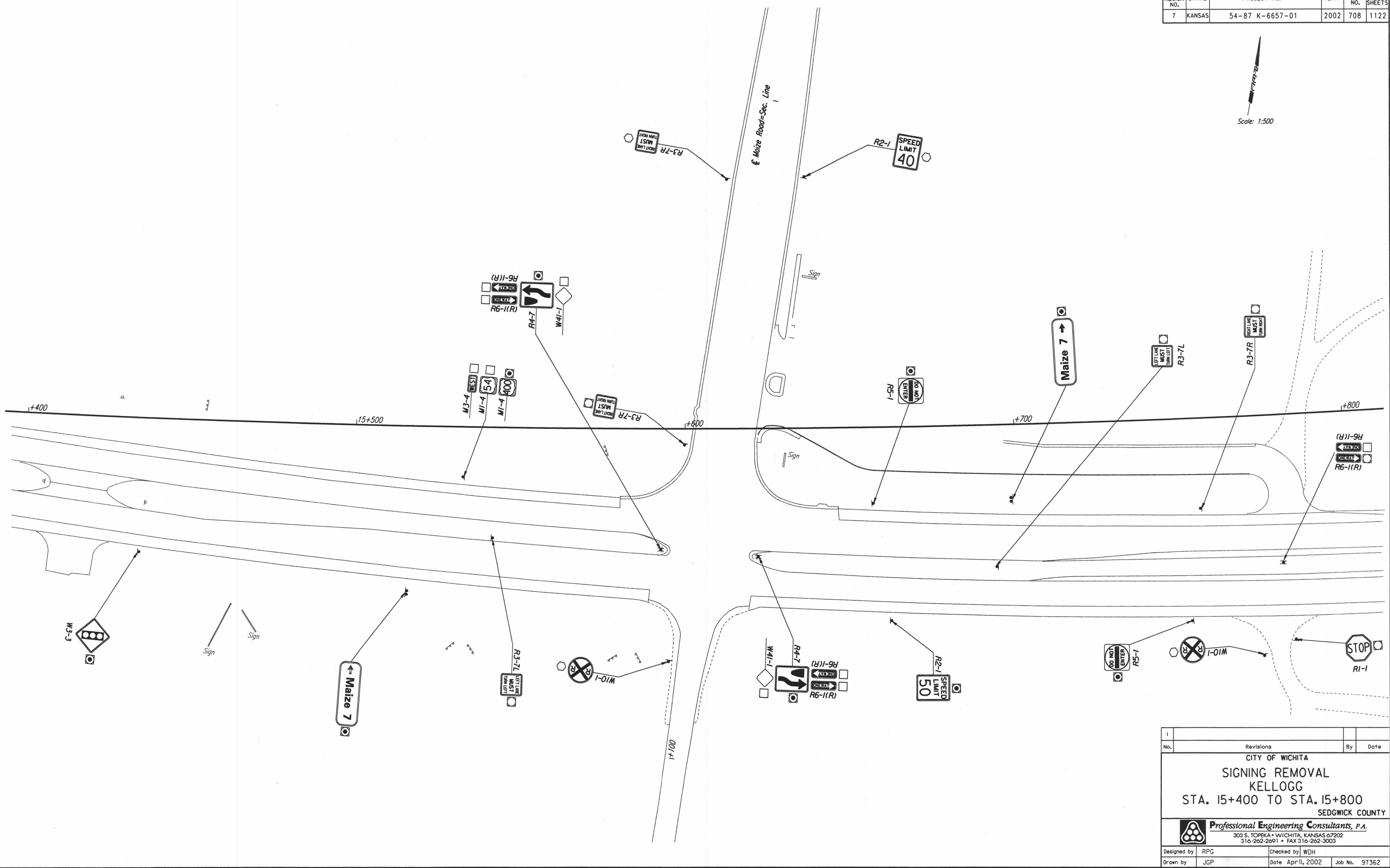


FHWA REGION NO.	STATE	PROJECT NO.	YEAR	SHEET NO.	TOTAL SHEETS
7	KANSAS	54-87 K-6657-01	2002	708	1122



REFERENCES NOTED	DATE
REFERENCES CHECKED	

DSWR: WDH OPER: JGP SCALE: 1:500
 i:/1997/97362/Signing/Existing/PL154.DGN 11-09-1999 8:49:44 LAST REV: 1-25-2002 BY: svb



No.	Revisions	By	Date

CITY OF WICHITA
SIGNING REMOVAL
KELLOGG
STA. 15+400 TO STA. 15+800
 SEDGWICK COUNTY

Professional Engineering Consultants, P.A.
 303 S. TOPEKA • WICHITA, KANSAS 67202
 316-262-2691 • FAX 316-262-3003

Designed by	RPG	Checked by	WDH
Drawn by	JGP	Date	April, 2002
		Job No.	97362