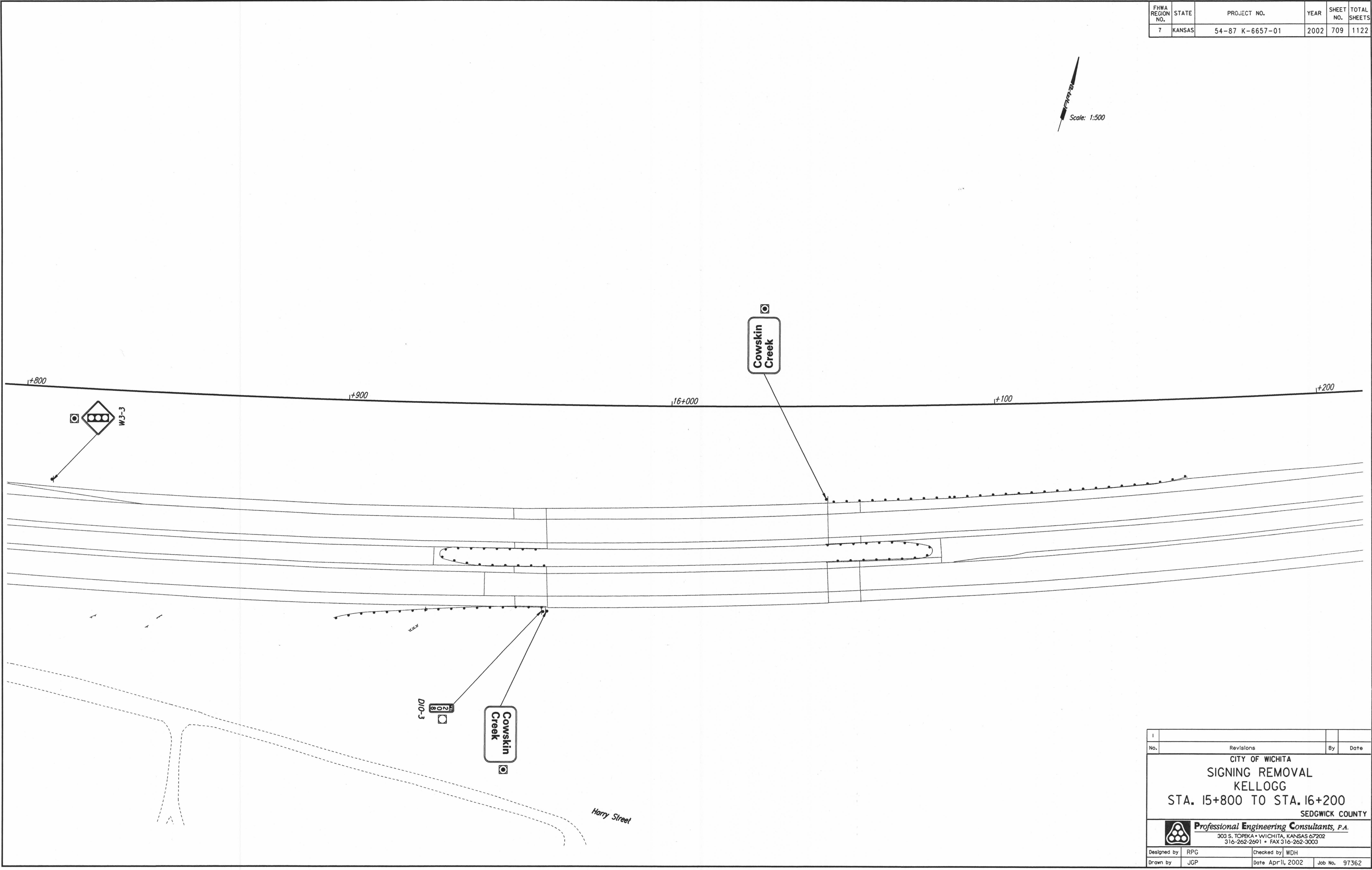


FHWA REGION NO.	STATE	PROJECT NO.	YEAR	SHEET NO.	TOTAL SHEETS
7	KANSAS	54-87 K-6657-01	2002	709	1122



REFERENCES NOTED	DATE
REFERENCES CHECKED	

DSNR: WDH OPER: JGP SCALE: 1:500  
 i:/1997/97362/Signing/Existing/PL158.DGN 11-09-1999 8:05:23 LAST REV: 1-25-2002 BY: svb



No.	Revisions	By	Date
CITY OF WICHITA <b>SIGNING REMOVAL</b> <b>KELLOGG</b> <b>STA. 15+800 TO STA. 16+200</b> SEDGWICK COUNTY			
 <b>Professional Engineering Consultants, P.A.</b> <small>303 S. TOPKA • WICHITA, KANSAS 67202          316-262-2691 • FAX 316-262-3003</small>			
Designed by	RPG	Checked by	WDH
Drawn by	JGP	Date	April, 2002
		Job No.	97362