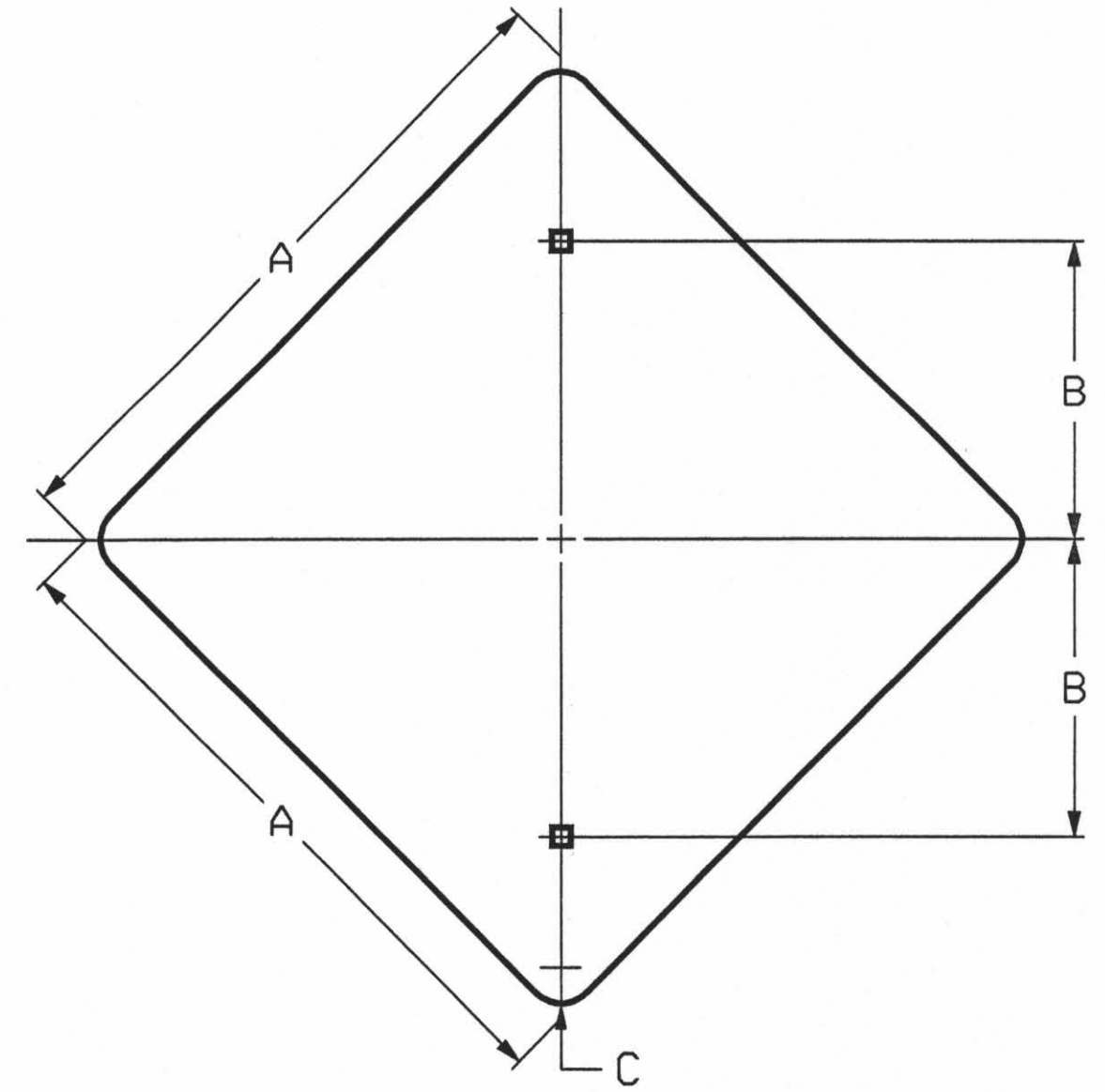
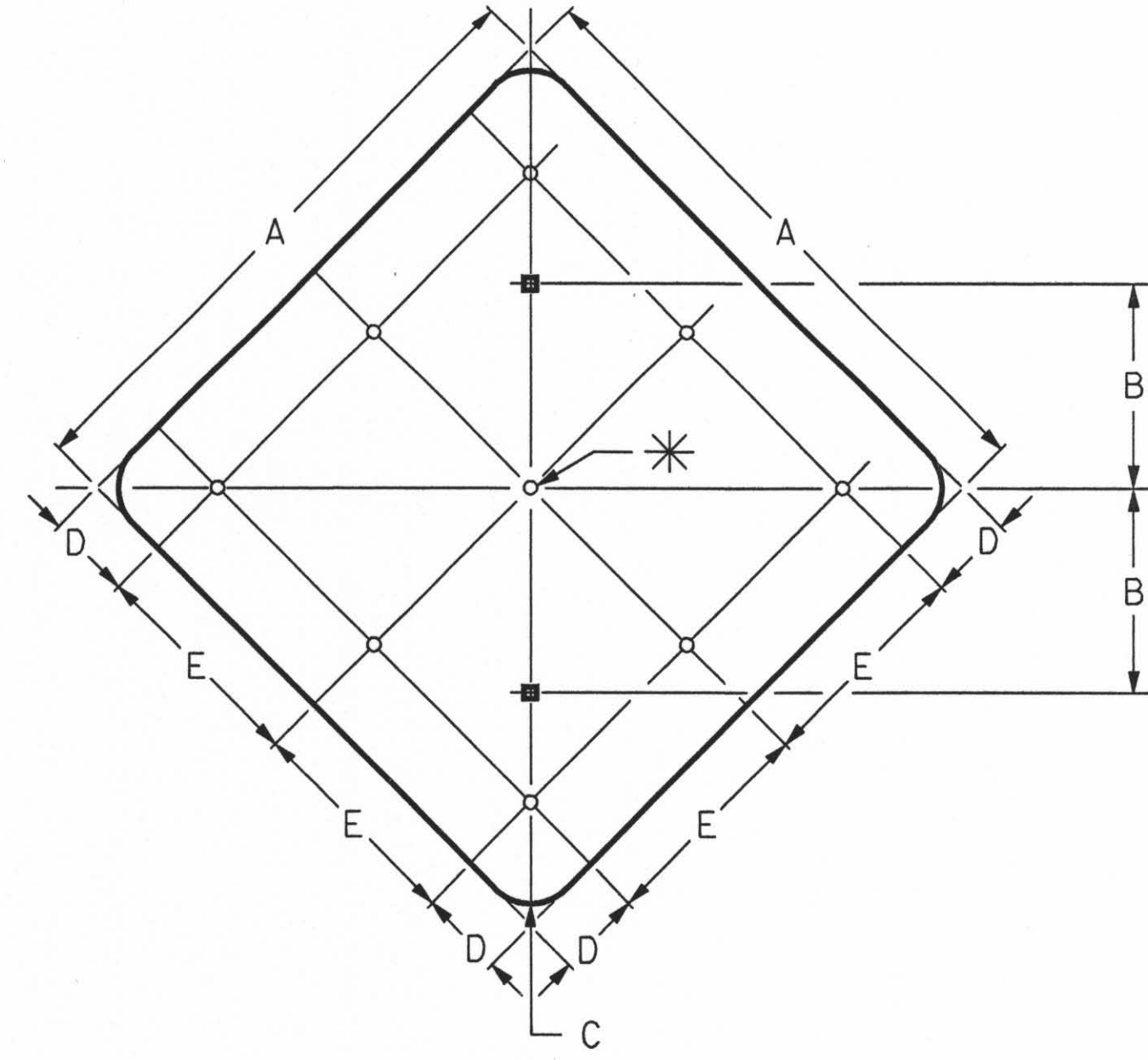


A	B	C	D	E	T
750	750	75	600	375	2
900	900	150	600	450	2

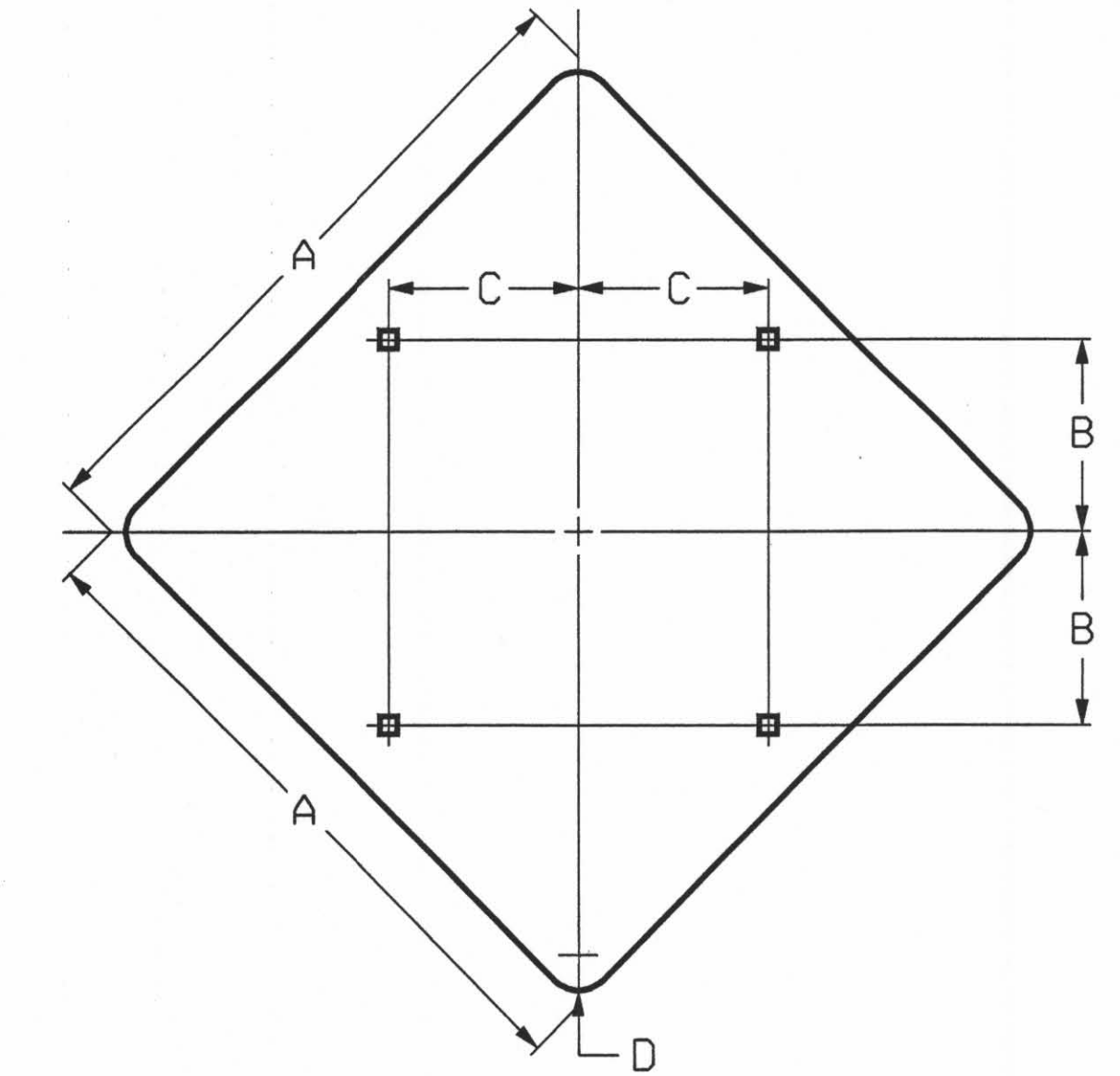


	A	B	C	T
①	125	64	10	1
	450	150	38	1.6
	600	300	38	2
	750	300	48	2
②	900	450	57	2

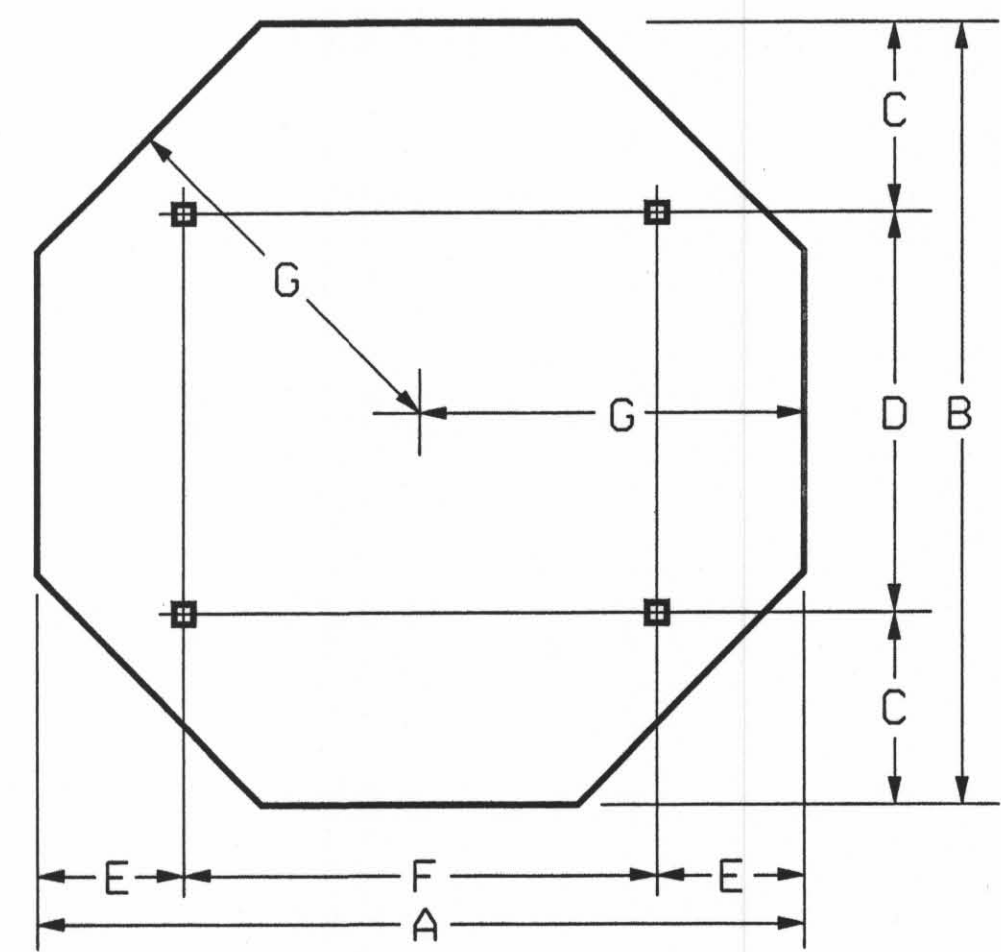


A	B	C	D	E	T
450	150	38	64	165	1.6

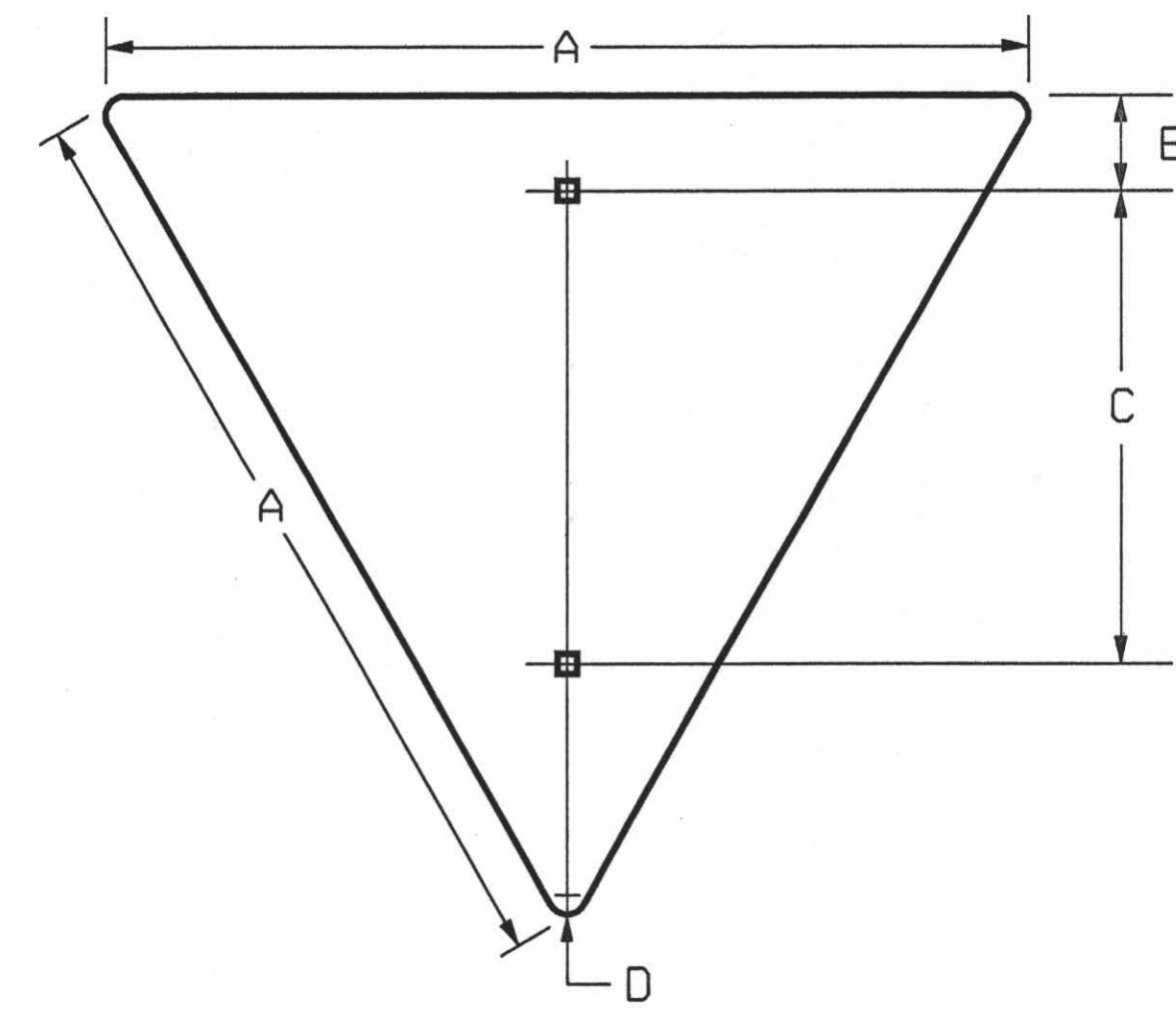
\* 5 mm DIA. HOLES FOR MOUNTING  
83 mm YELLOW BUTTON REFLECTORS  
(9 REQUIRED)



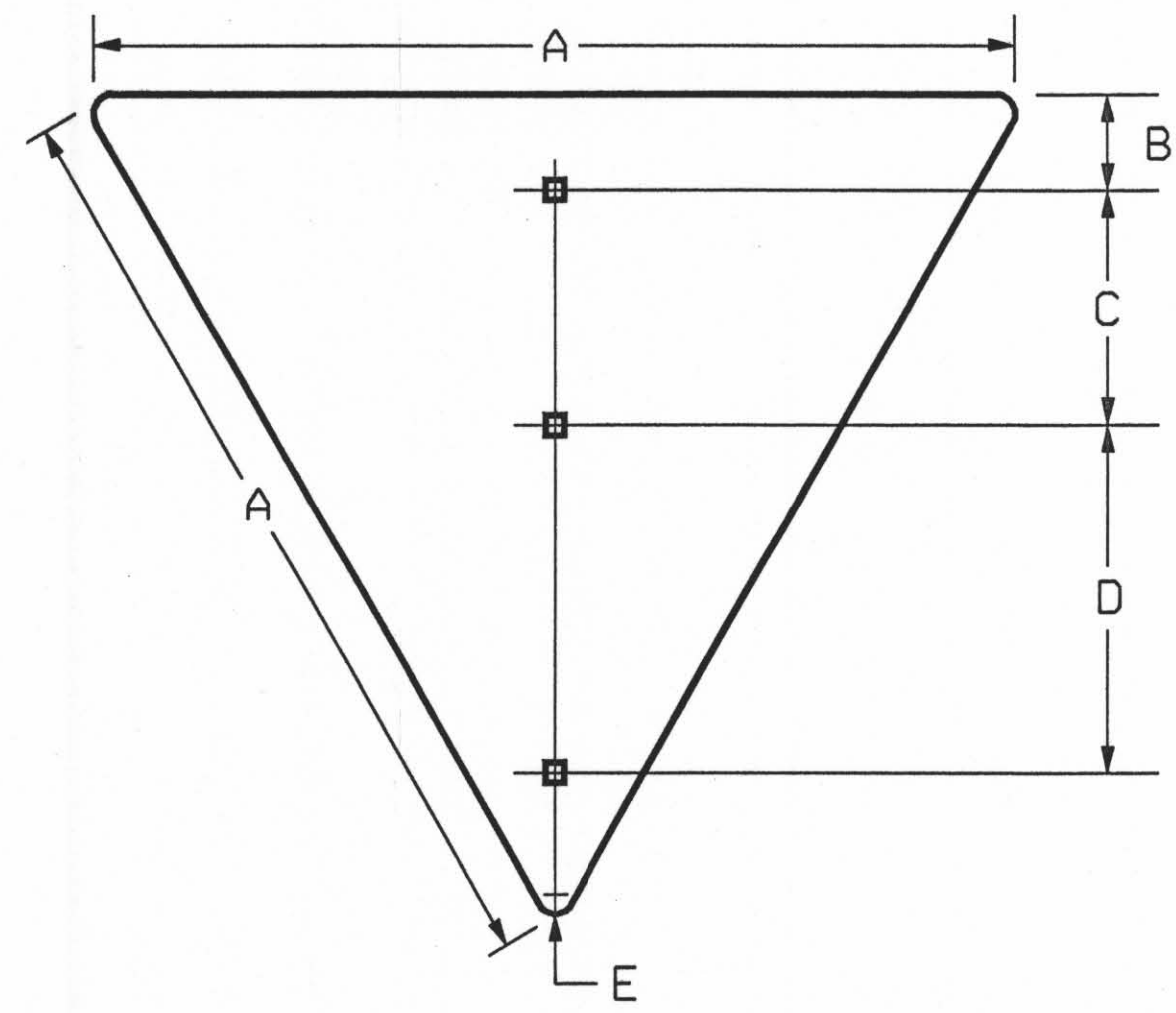
A	B	C	D	T
1200	300	375	75	2.5



A	B	C	D	E	F	G	T
1200	1200	300	600	225	750	600	2.5



A	B	C	D	T
900	75	450	50	2



A	B	C	D	E	T
1200	75	300	450	75	2
1500	75	450	450	100	2.5

NOTE:  
Aluminum Sign Blanks to be ASTM B209(H) Alloy 6061-T6, 5154-H38, or 5052-H38. Both faces and all cut edges of sign to be degreased and etched.  
All holes are 10 mm square, unless otherwise noted.  
The dimension "T" is the thickness of the aluminum blank.  
All dimensions are in millimeters.  
① Holes to be 8 mm Diameter.  
② Center hole required.

DSMR: OPER: SVB SCALE: 1:1997/97362/SIGNING/STANDARDS/TE540SI.DGN 11-19-2001 14:41:05 LAST REV: 1-25-2002 BY: svb

3					
2					
1					
NO.	DATE	REVISION	BY	APP'D	

**KANSAS DEPARTMENT OF TRANSPORTATION**

DETAILS FOR FLAT SHEET SIGN BLANKS

TE540SI 1-9-96

DESIGNED	DDG	DETAILED	DDG	QUANTITIES	Neida A Buckley
DESIGN CK.		DETAIL CK.		QUAN. CK.	
				TRACE	DDG
				TRACE CK.	