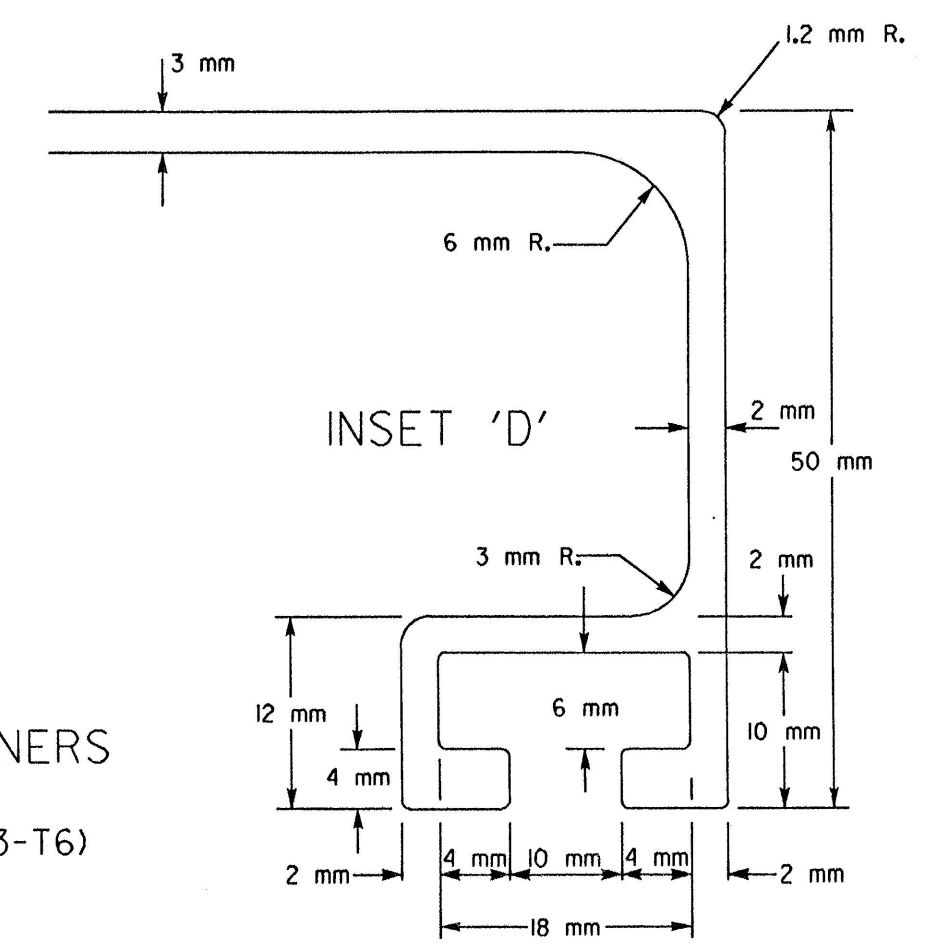
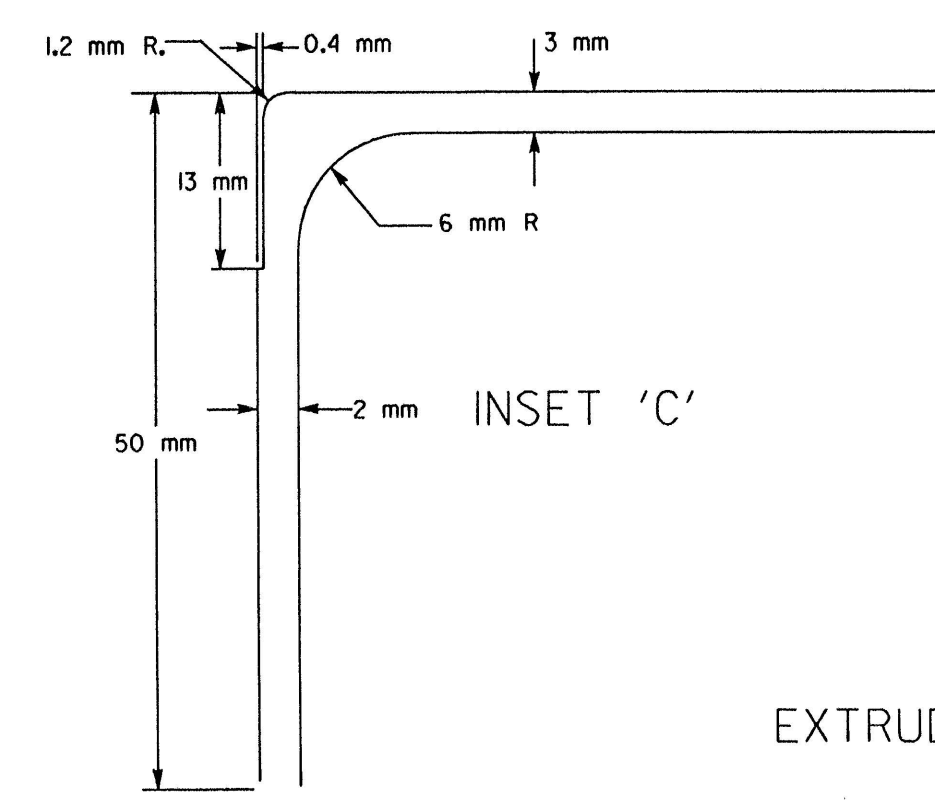
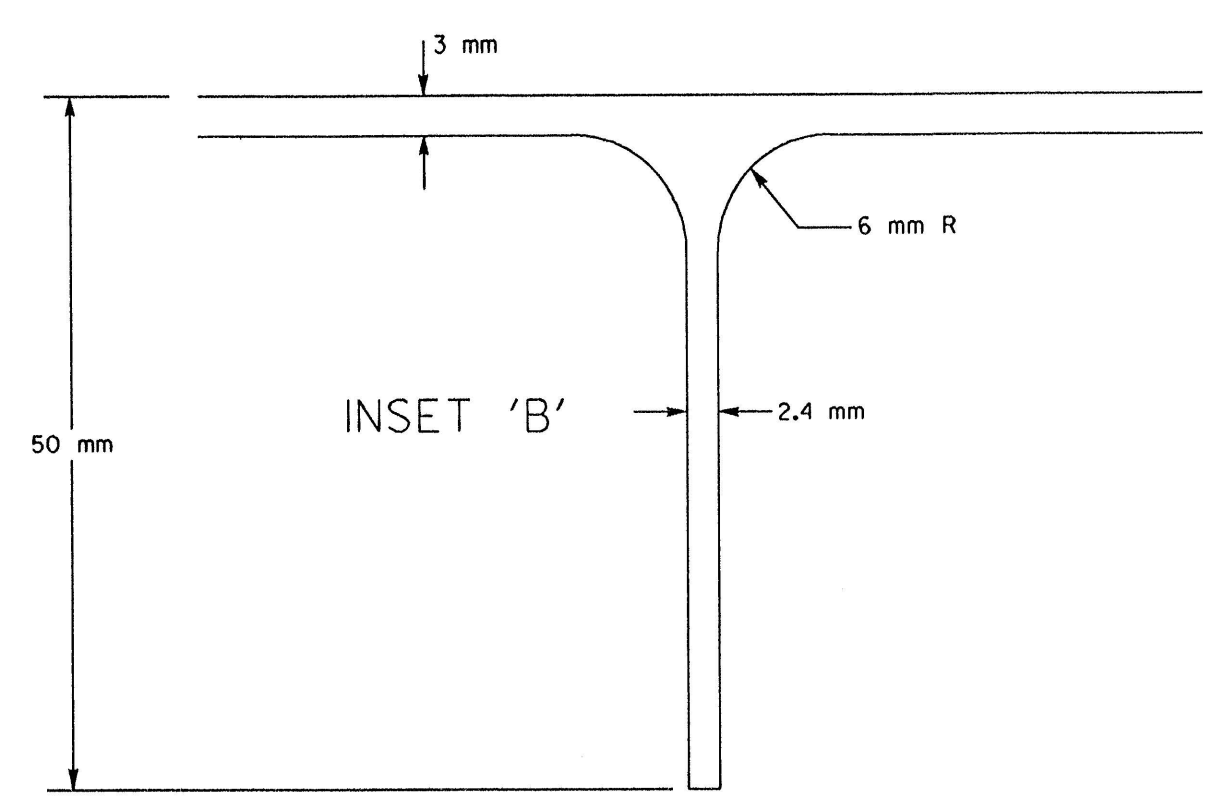
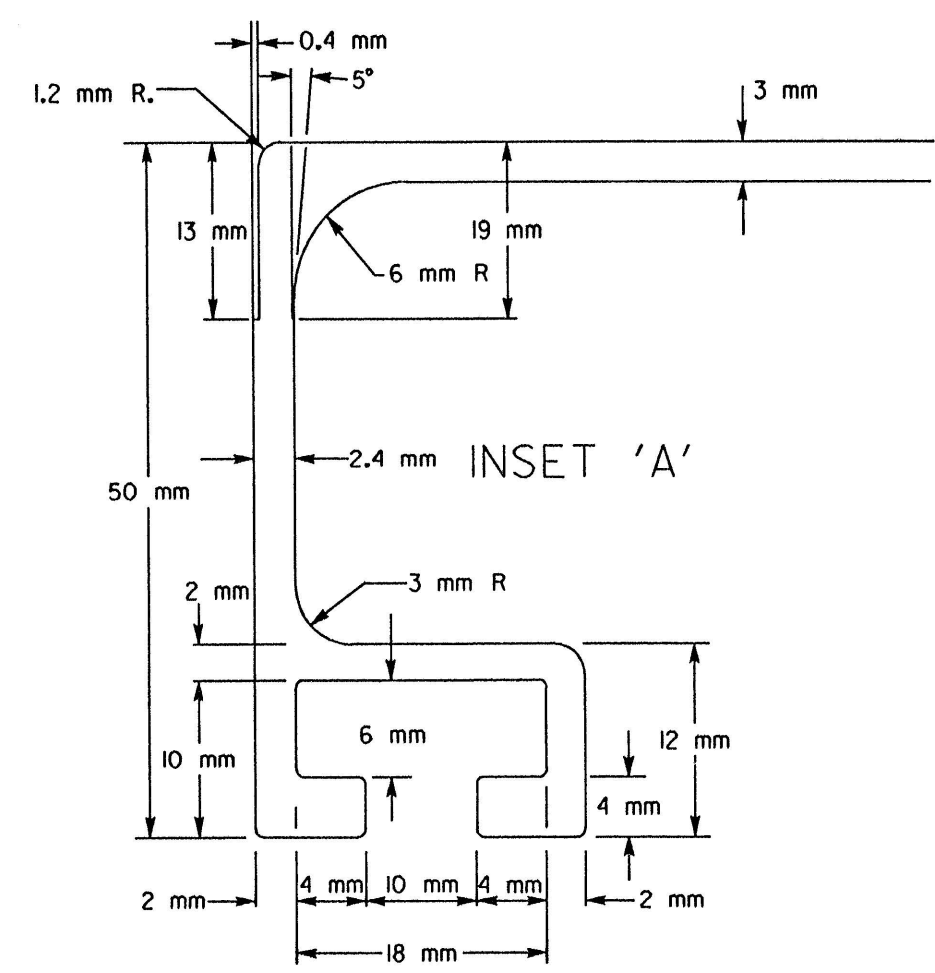
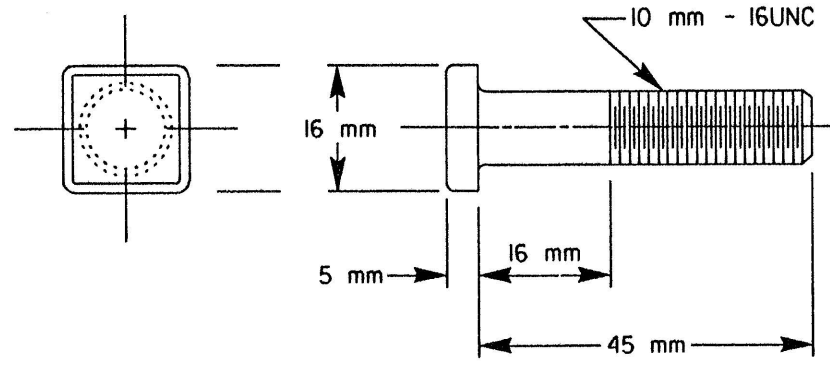


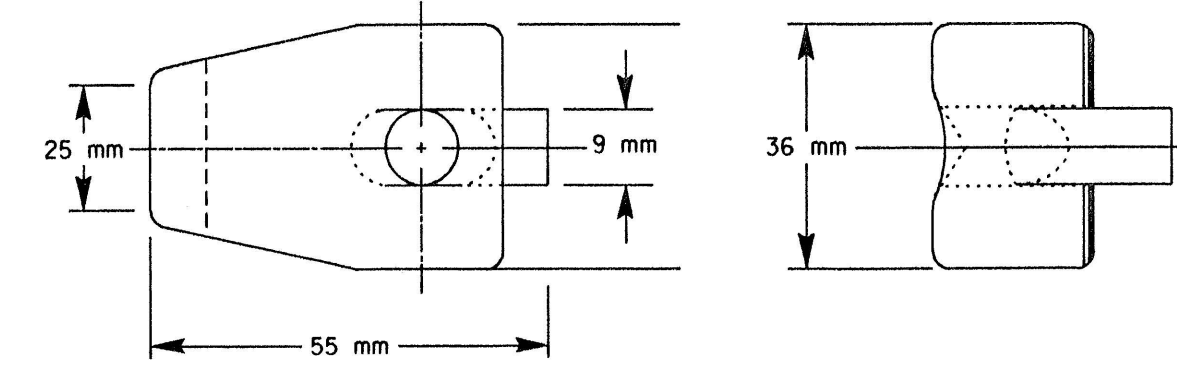
EXTRUDED SIGN PANEL WIDTHS
ALUMINUM
(ASTM B209, Alloy 3003-H 18)



EXTRUDED STIFFENERS
ALUMINUM
(ASTM B221, Alloy 6063-T6)



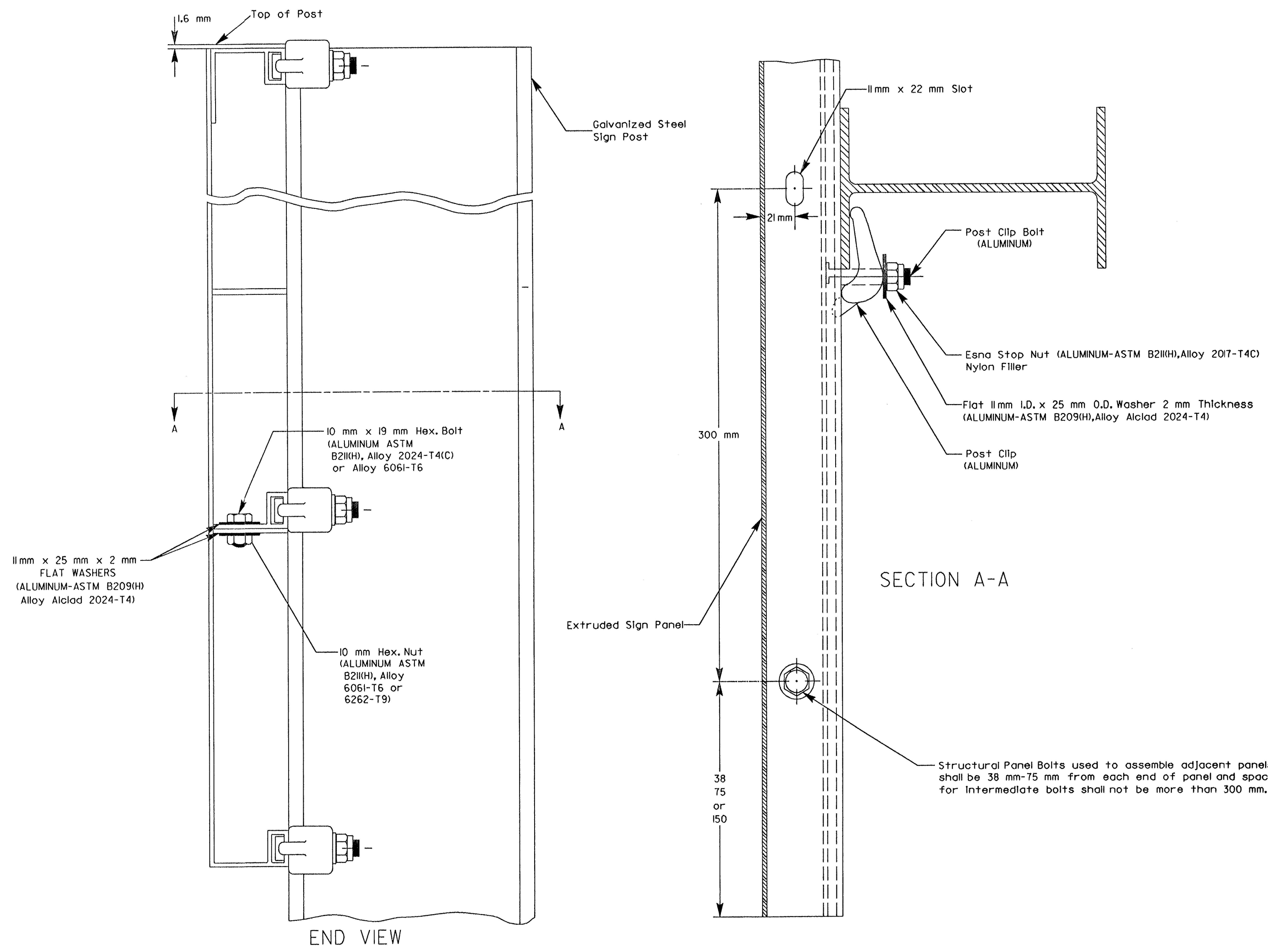
POST CLIP BOLT
ALUMINUM
(ASTM B211(H) ALLOY 2024-T4(C) OR 6061-T6)



POST CLIP
ALUMINUM
(ASTM B108, Alloy 356.0-T6
Alloy A 356.0-T6(A)
Alloy 356.0-F(B),(G))

- NOTES: EXTRUDED PANEL TOLERANCE
1. Gap between two adjacent panels shall not exceed 1.6 mm.
 2. Allowable lateral bow in panel shall not exceed ± 3 mm.
 3. Length of panel shall not exceed ± 3 mm from specified length.
 4. All inside and outside corners are to be 0.8 mm radius unless otherwise specified.

- EXTRUDED PANEL WIDTH ASSEMBLY
1. For extruded panels with an overall height in even meters, use only the 300 mm wide panel.
 2. For extruded panels with an overall height in intervals of 150 mm, use the 150 mm wide panel at the top or bottom of the sign. All other panels are to be the 300 mm wide panel.



END VIEW

All dimensions are in millimeters

| 3 | | | | |
|-----|------|----------|----|-------|
| 2 | | | | |
| 1 | | | | |
| NO. | DATE | REVISION | BY | APP'D |

KANSAS DEPARTMENT OF TRANSPORTATION

FABRICATION OF EXTRUDED SIGN PANEL & MOUNTING DETAIL FOR SIGN PANEL ON STEEL I-BEAM POST

TE636SI 7-20-93

| | | | |
|------------|------------|------------|-----------|
| DESIGNED | TRACED | QUANTITIES | TRACED |
| DESIGN CK. | DETAIL CK. | QUAN. CK. | TRACE CK. |

APP'D: NELDA A BUCKLEY

DSNR: OPER: SVB SCALE: 1:1997/97362/SIGNING/STANDARDS/TE636SI.DGN 11-19-2001 14:41:05 LAST REV: 1-25-2002 BY: svb