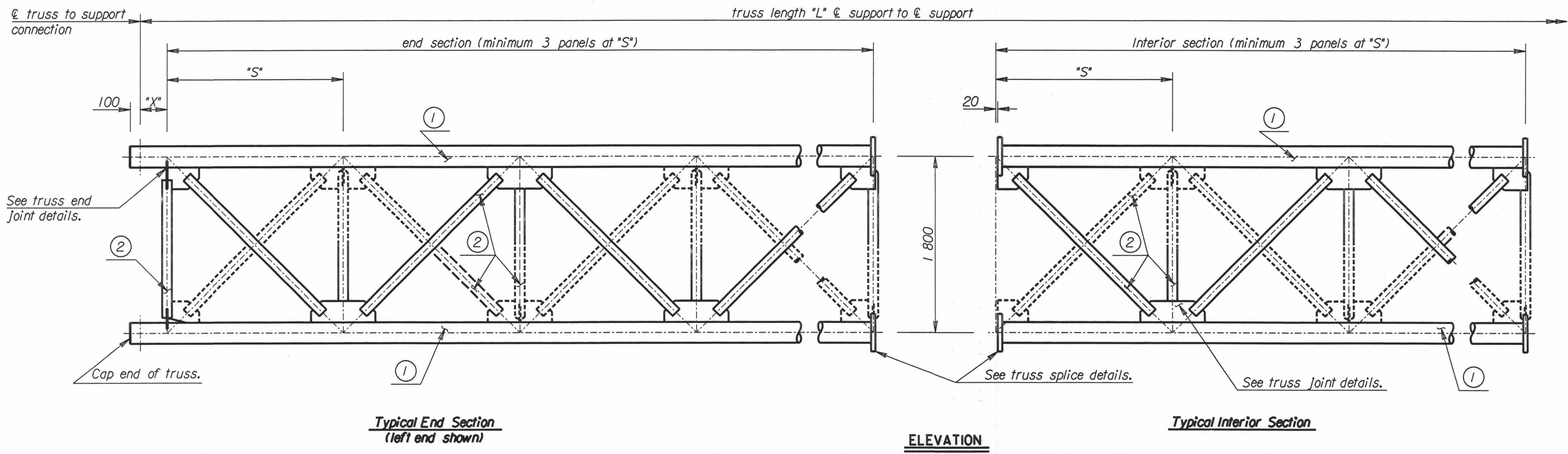
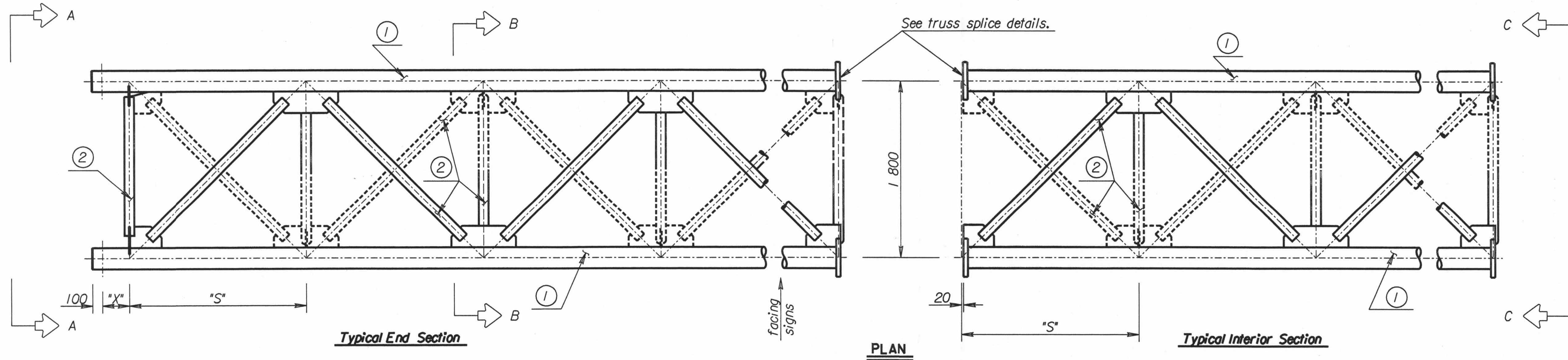
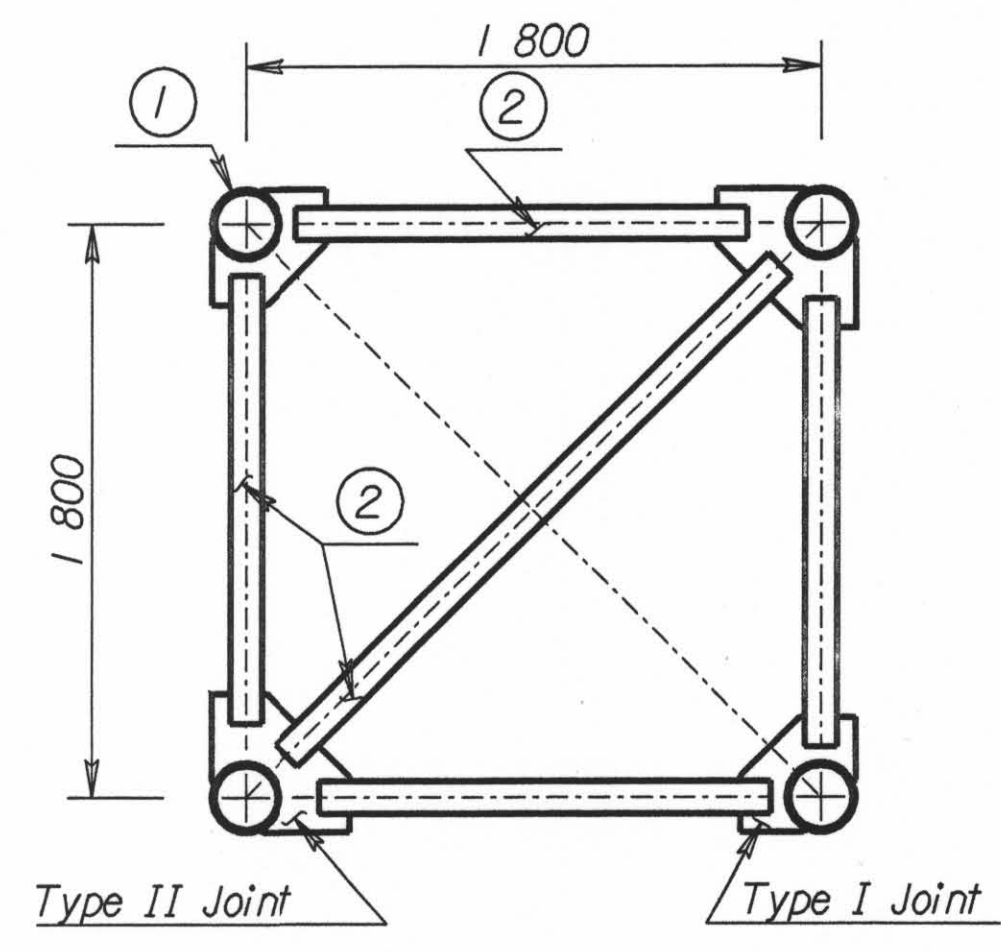


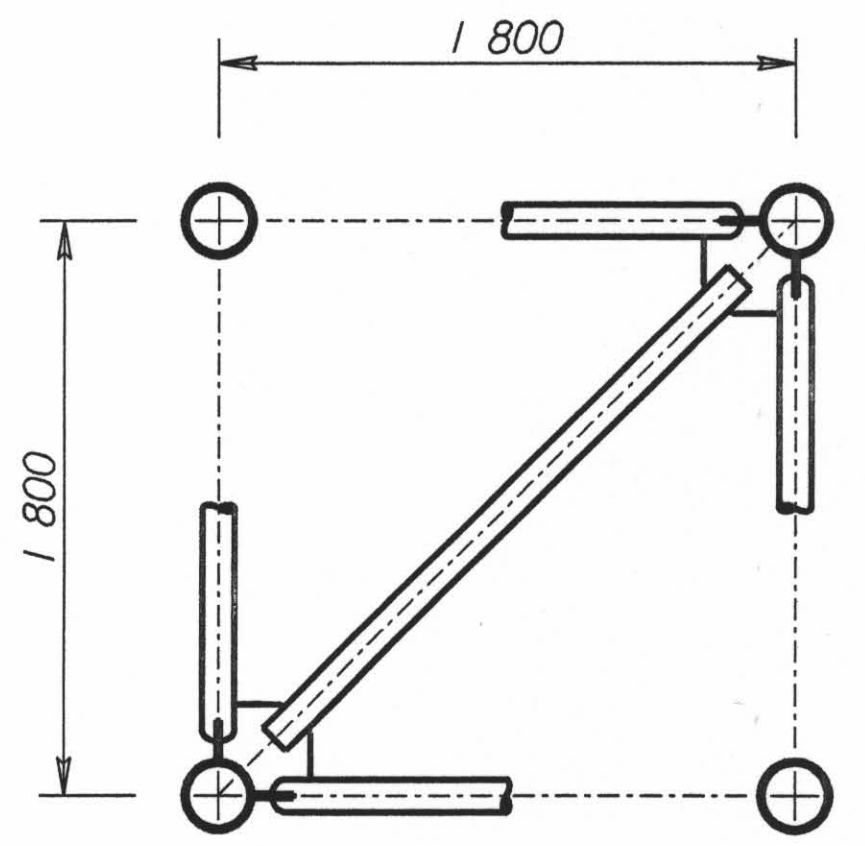
STATE	PROJECT NO.	YEAR	SHEET NO.	TOTAL SHEETS
KANSAS	54-87 K-6657-01	2002	770	1122



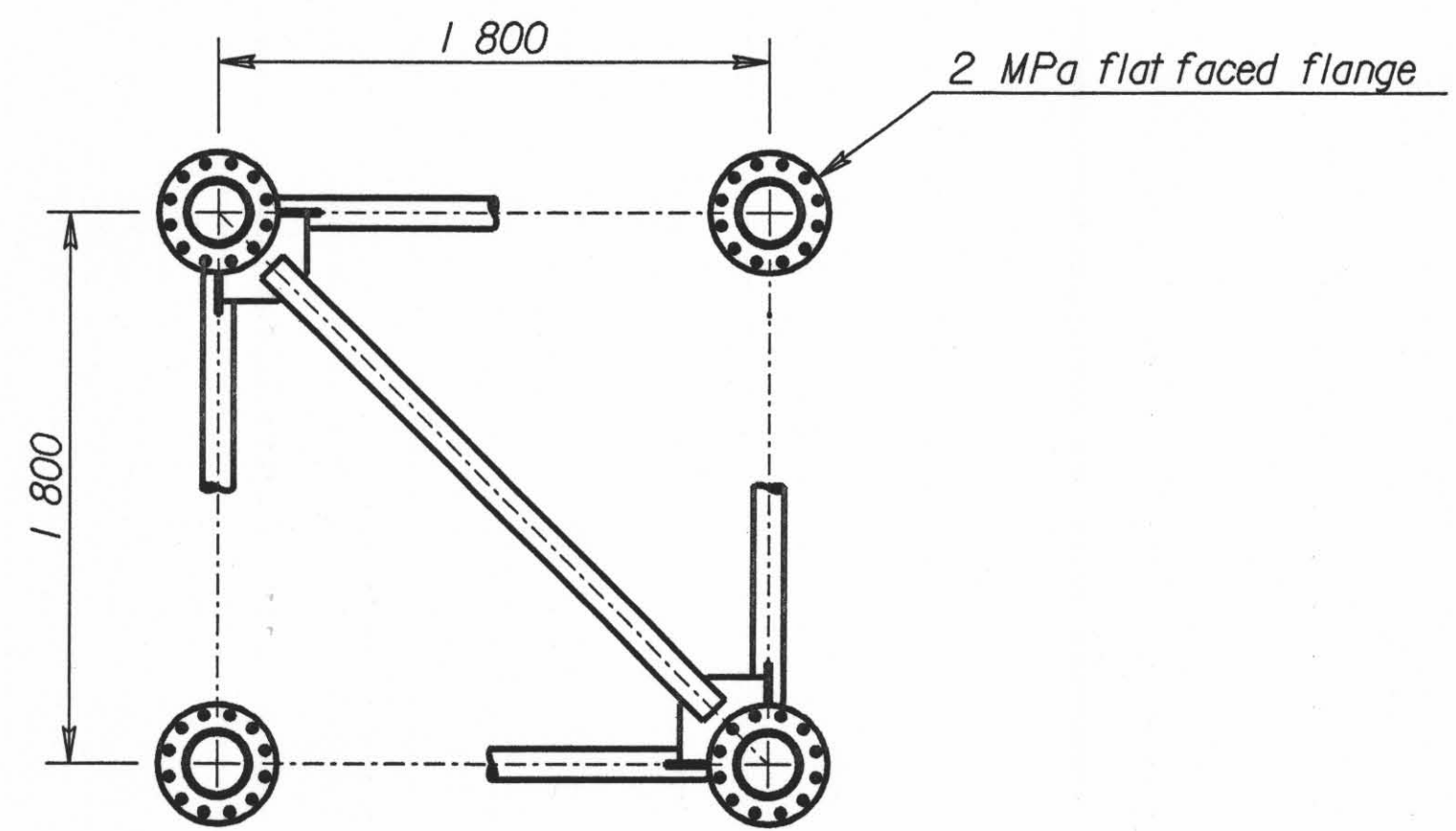
Note: Dashed lines, in plan and elevation views, represent the bottom or rear portions of member ②.



SECTION A-A
See truss end joint details.



SECTION B-B
See truss joint details.



SECTION C-C
See truss splice details.

Note: See "Construction Layout" for wall thickness, "N", "S", "L" and "X" dimensions.

- Member ① is 219 mm O.D. pipe.
- Member ② is 102 mm O.D. pipe.

Std. Base File: sl151bsi.dgn - Plot 3
 Plotted By: \$USERNAME\$ | Plot Location: \$UNIT\$
 File: \$\$\$\$\$\$DGN\$SPEC\$\$\$\$\$
 Plot Date: \$\$\$\$STIME\$\$\$\$\$

NO.	DATE	REVISIONS	BY	APP'D

KANSAS DEPARTMENT OF TRANSPORTATION
STANDARD STRUCTURAL SIGN SUPPORTS
SPAN TYPE OVERHEAD
ALUMINUM ALTERNATE
TRUSS FRAMING PLAN AND DETAILS
SL151B-03 SI **SEDGWICK CO.**

DESIGNED	BFM	DETAILED	DDP	QUANTITIES	Kenneth F. Hurst
DESIGN CR.	RDH	DETAIL CR.	RDH	QUAN. CR.	CADD D.JE
					CADD LES