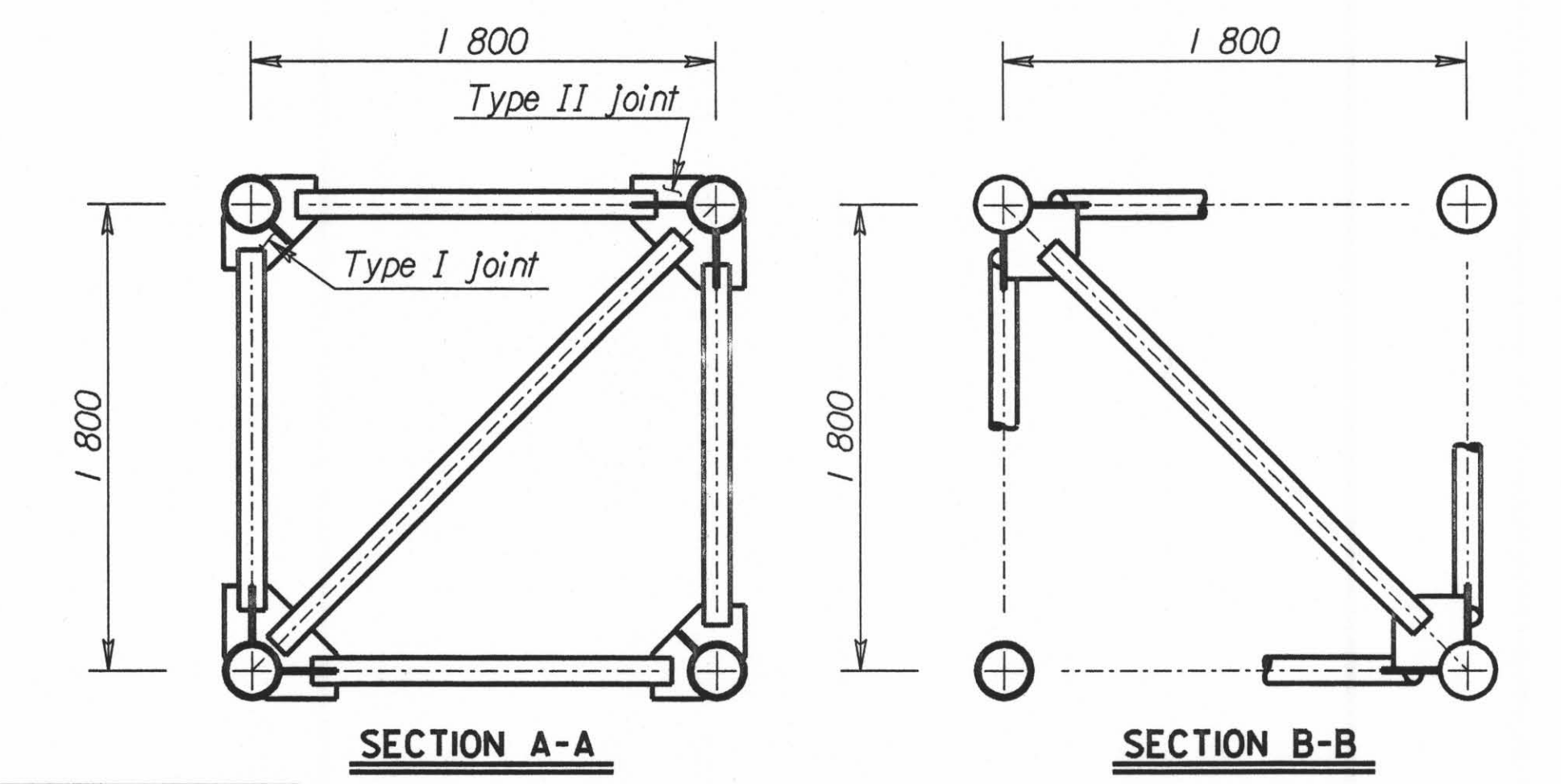
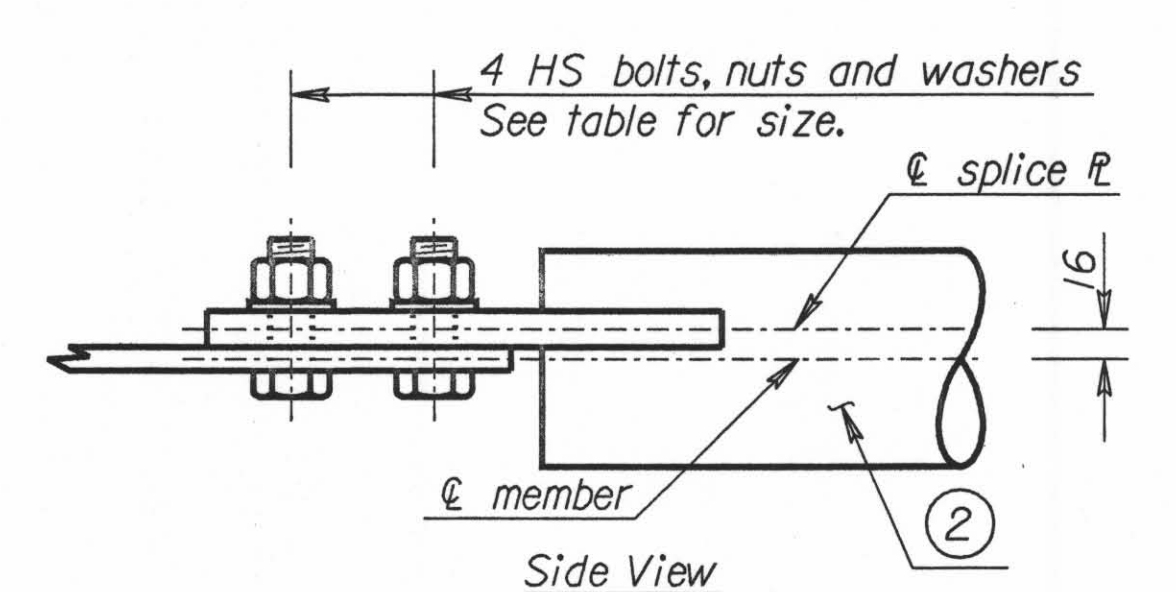
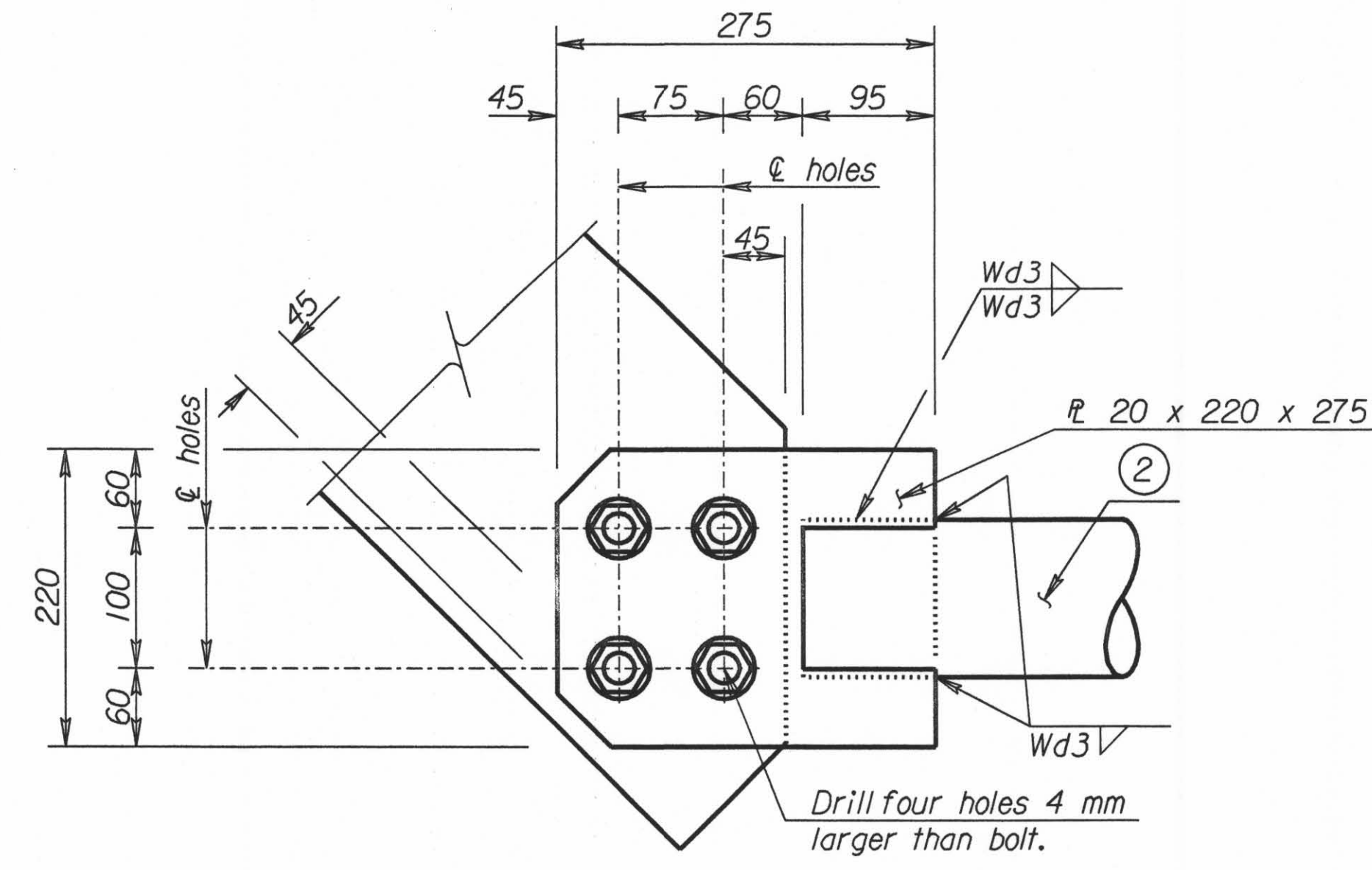
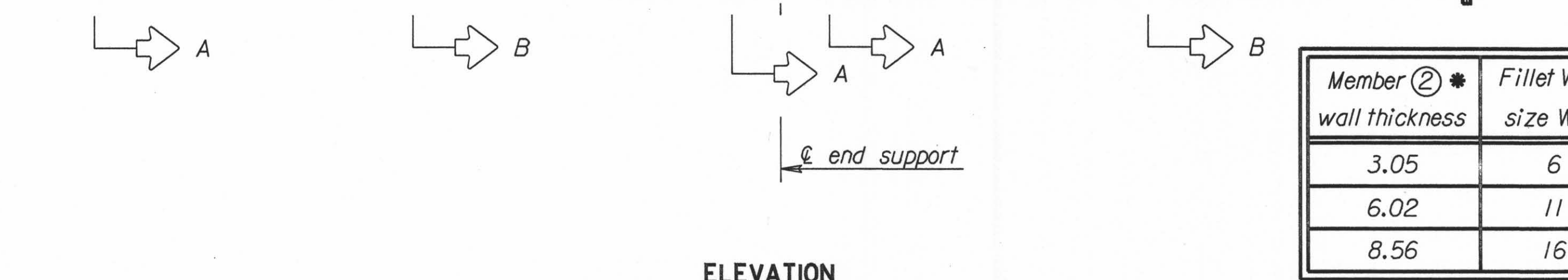
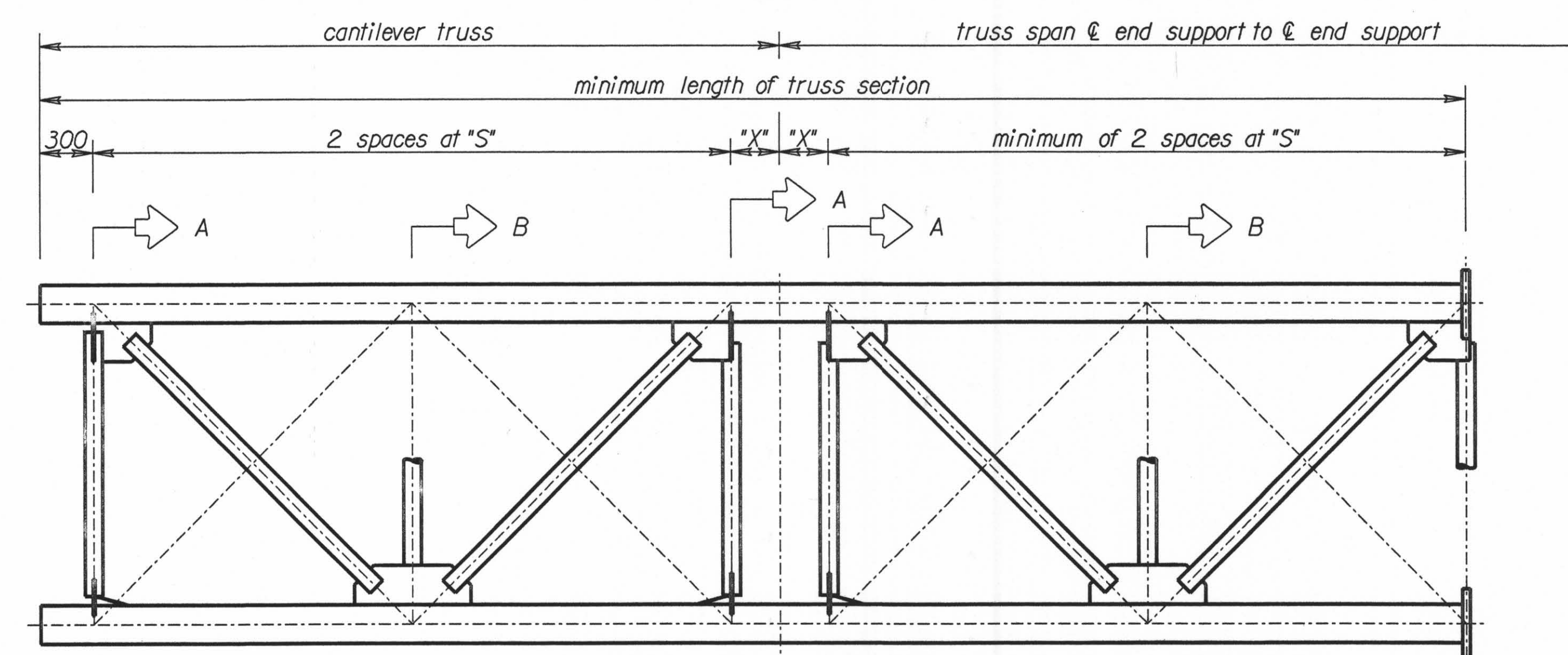
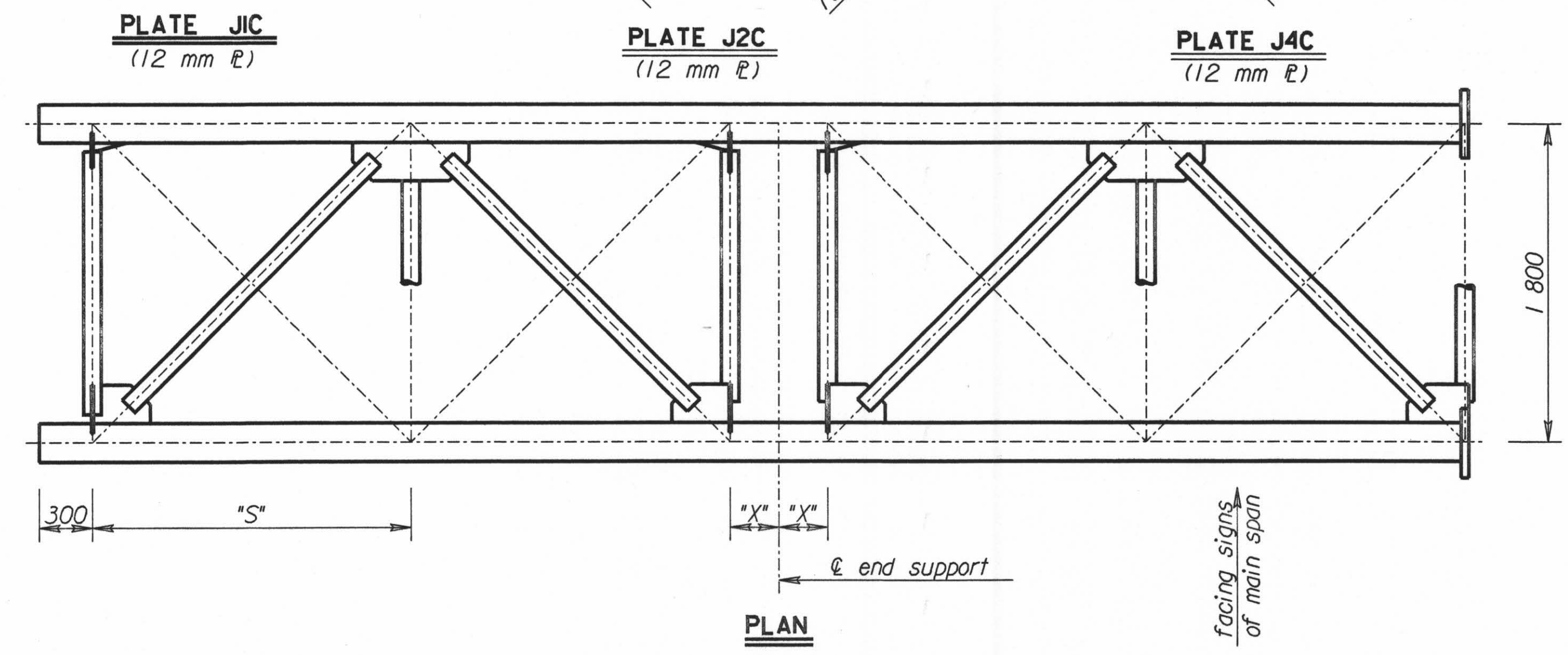
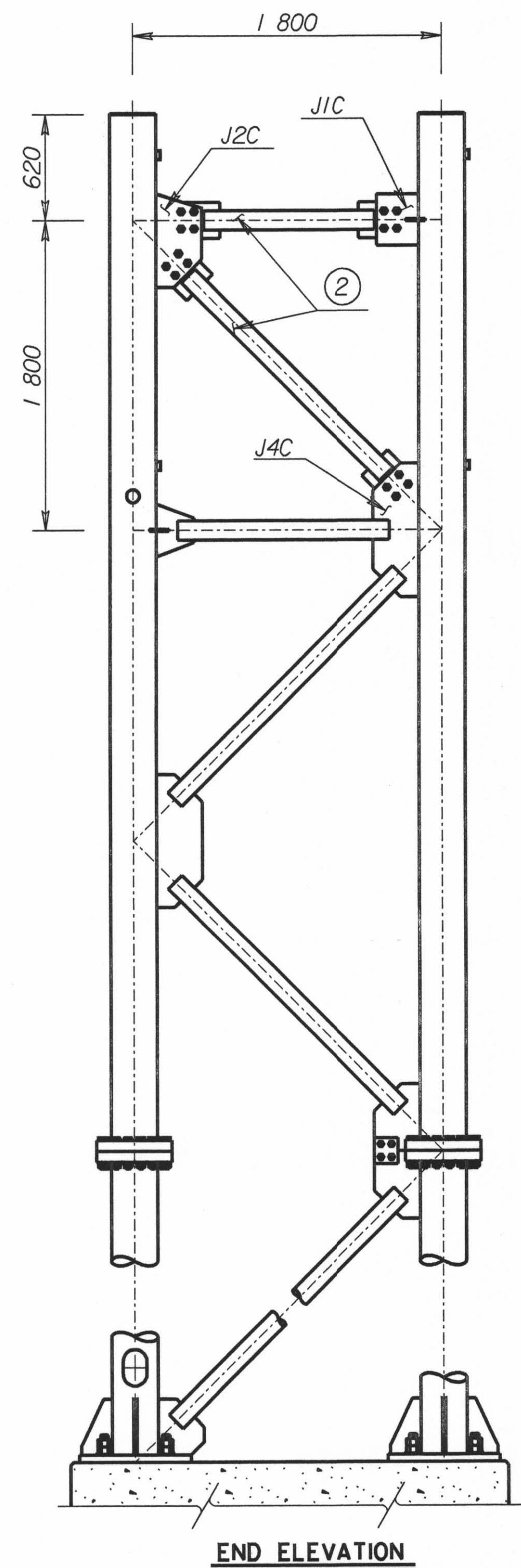
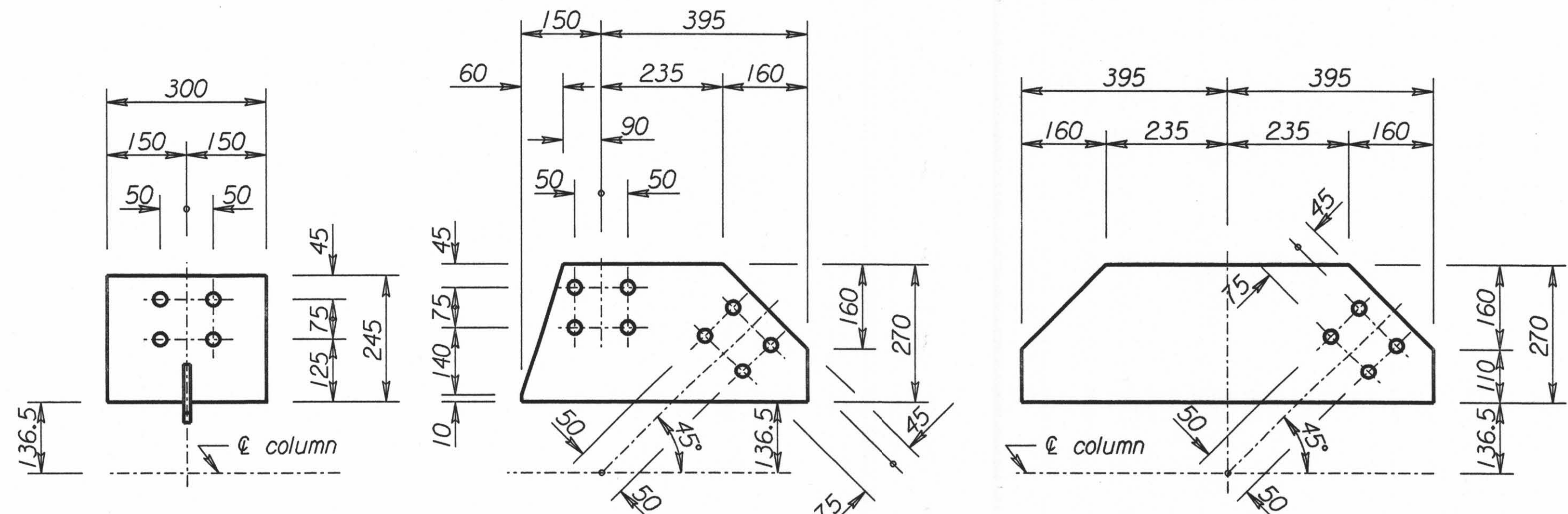


STATE	PROJECT NO.	YEAR	SHEET NO.	TOTAL SHEETS
KANSAS	54-87 K-6657-01	2002	774	1122

Note: This sheet shows only those details of the cantilever-truss that differ from the standard truss details. Refer to the standard truss details for any details not shown on this sheet.

Note: This sheet shows the bolted option for the cantilever end support. The Contractor may choose to fabricate the end support exactly as shown for the standard truss, except that the top two secondary members would be welded into place in the field after the truss is erected.



Member ② * wall thickness	Fillet Weld size Wd3	Bolt Size
3.05	6	M16 x 2 x 60
6.02	11	M22 x 2.5 x 65
8.56	16	M24 x 3 x 70

\* See "Construction Layout" for wall thickness, "S" and "X".

Std. Base File: sl151b1.dgn - Plot 7  
 Plotted By: \$\$\$USERNAME\$\$\$ Plot Location: \$UNIT\$  
 File: \$\$\$SPEC\$\$\$  
 Plot Date: \$\$\$STIME\$\$\$

NO.	DATE	REVISIONS	BY	APP'D
KANSAS DEPARTMENT OF TRANSPORTATION STANDARD STRUCTURAL SIGN SUPPORTS CANTILEVER-SPAN TYPE OVERHEAD ALUMINUM ALTERNATE END SUPPORT AND TRUSS SPECIAL DETAILS SL151B-07 SI SEDGWICK CO.				
DESIGNED	LES	DETAILED	LES	QUANTITIES
DESIGN CL.	LRR	DETAIL CL.	LRR	QUANCE.
APP'D	4-10-97	APP'D	Kenneth F. Hurst	DIE
CADD		CADD		DIE
CADD CL.		CADD CL.		LES