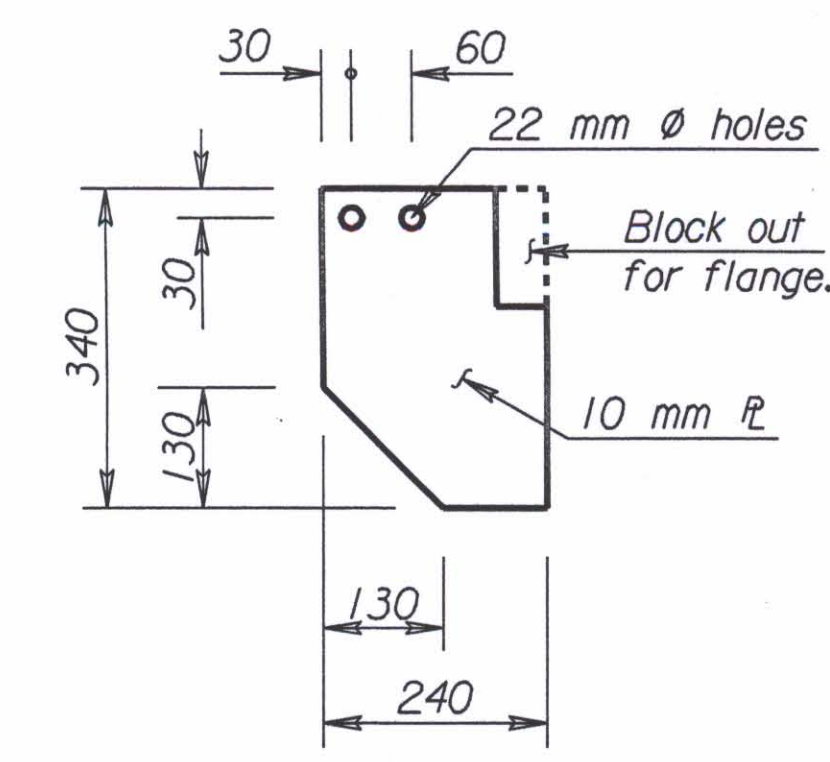
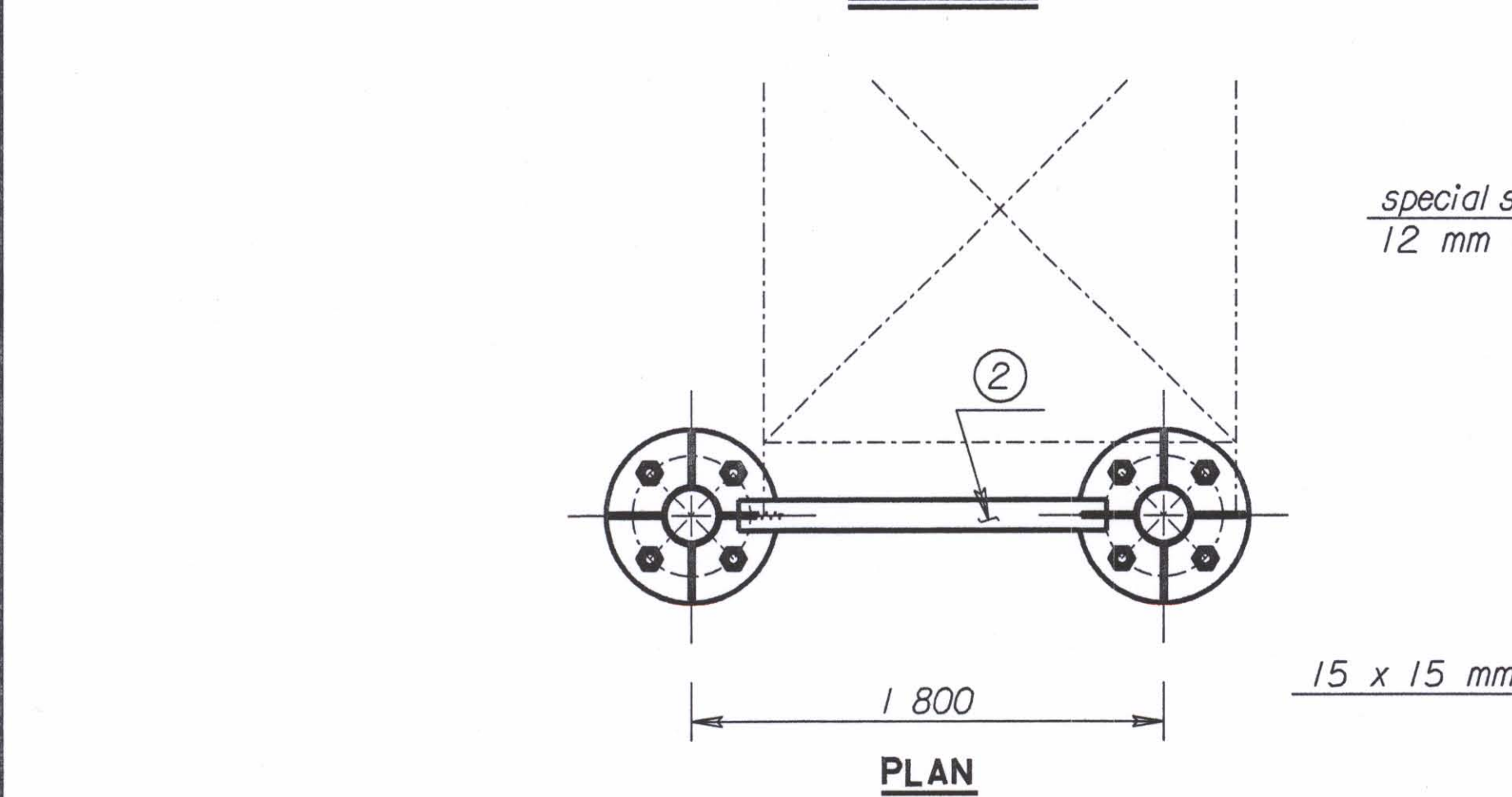
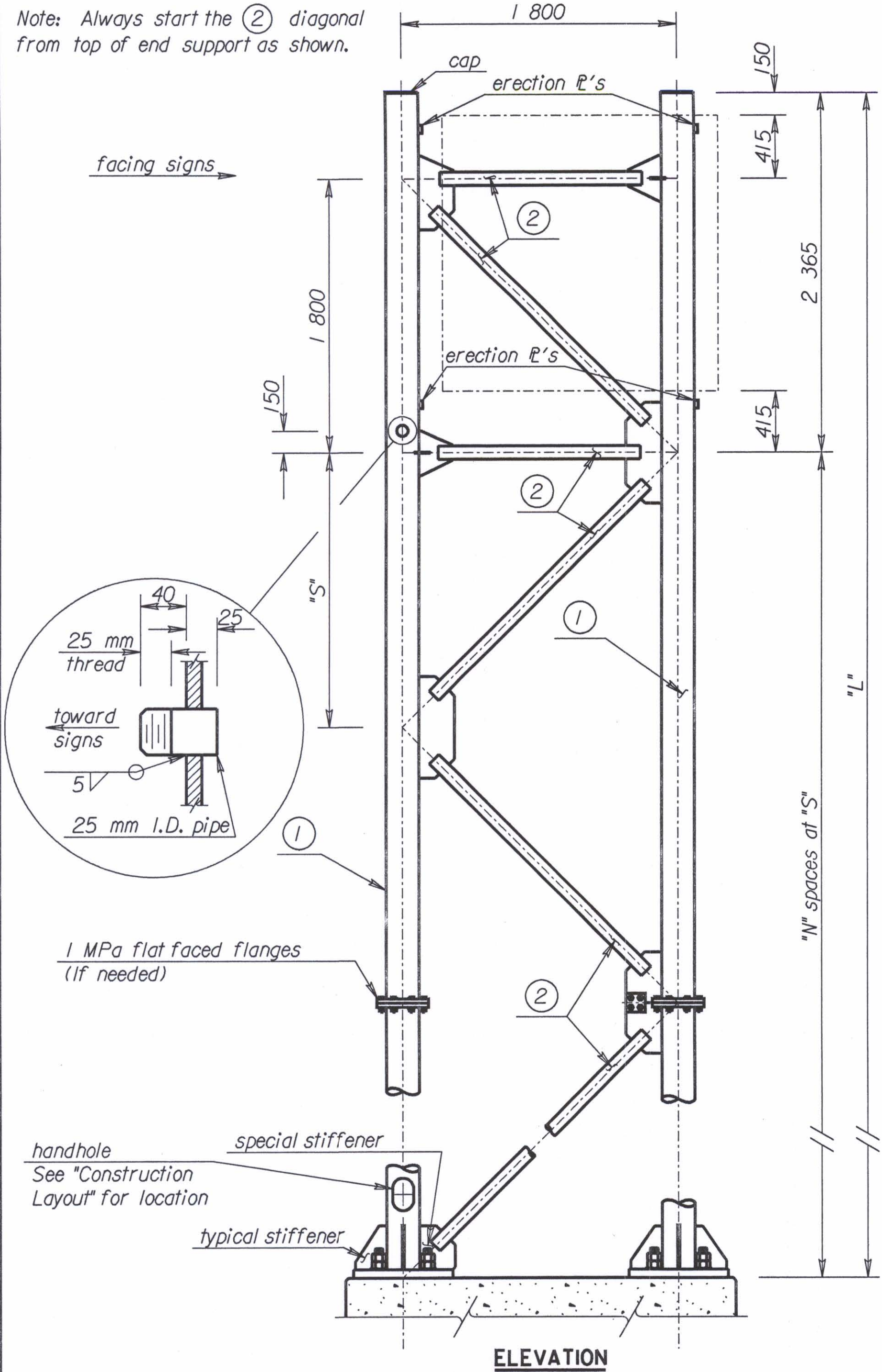
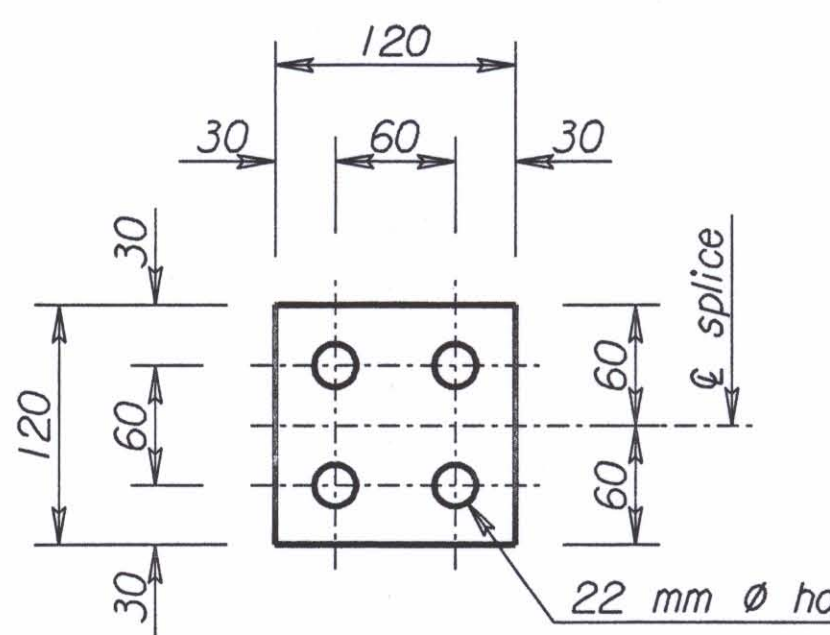


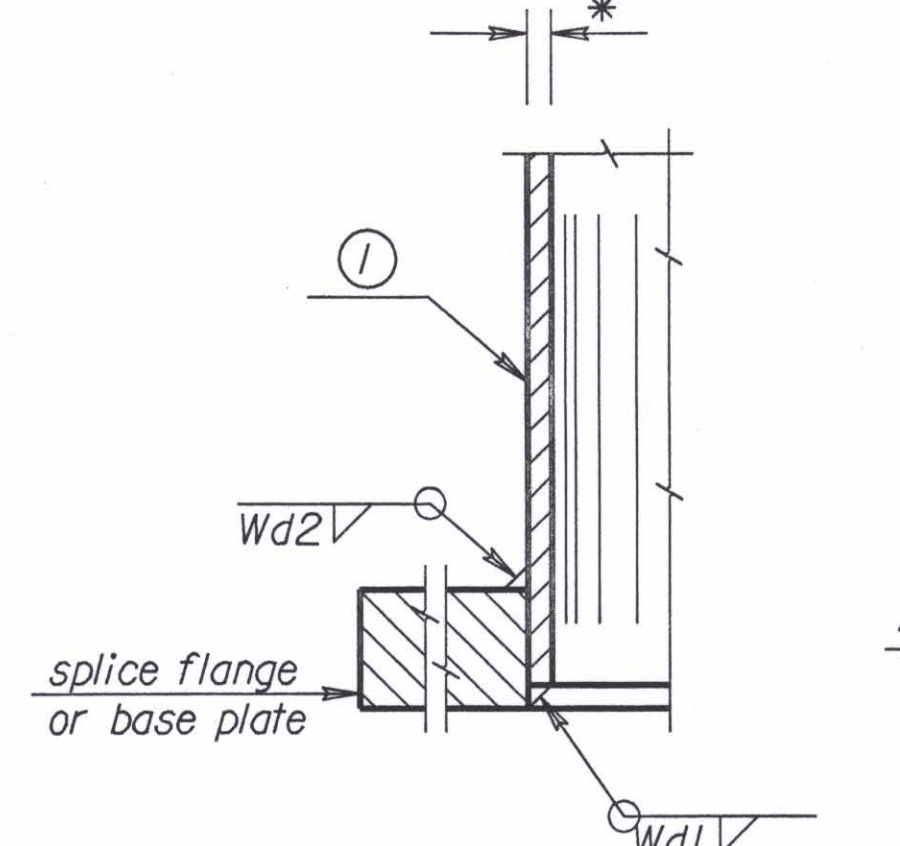
Note: Always start the (2) diagonal from top of end support as shown.



**HALF J3 fl**

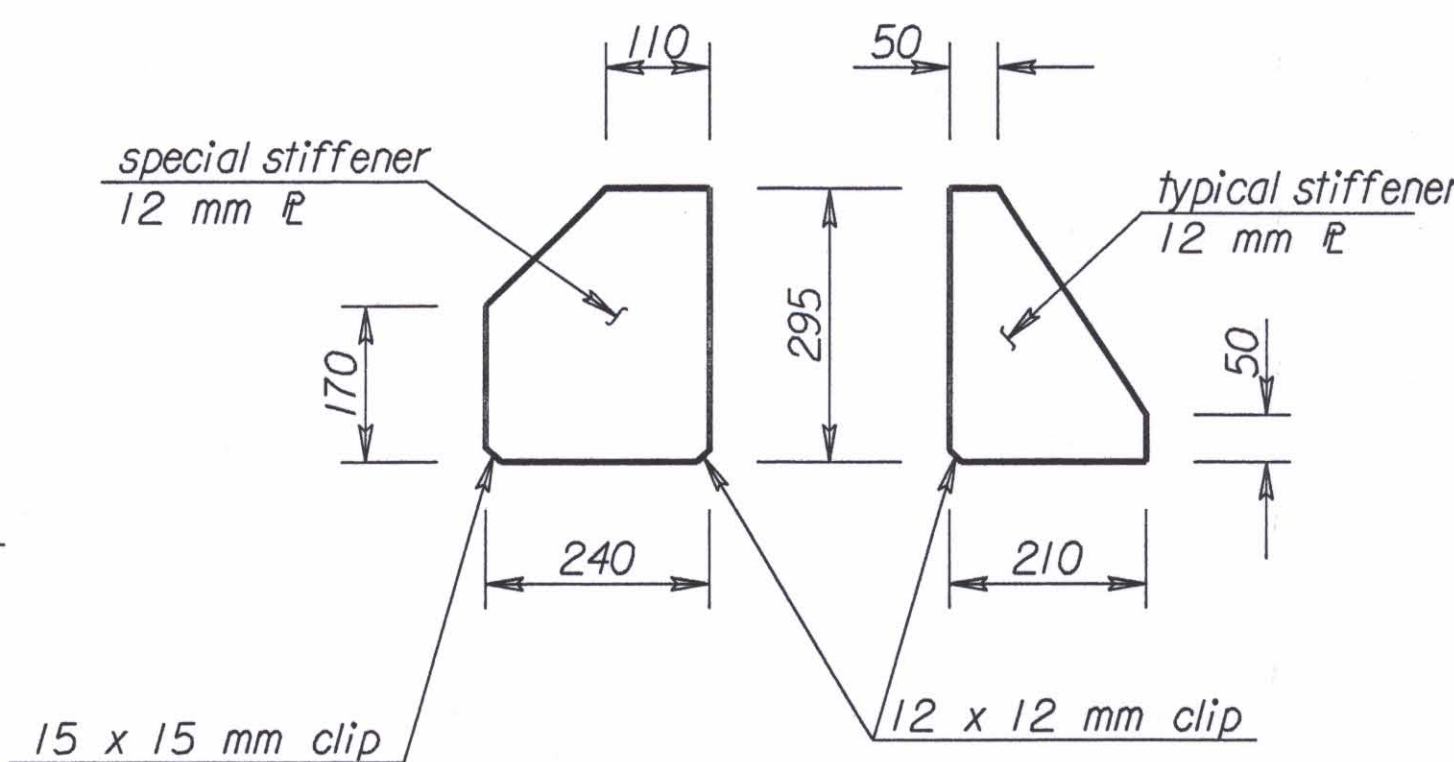


**SPLICE PLATE DETAILS**  
(10 mm fl)

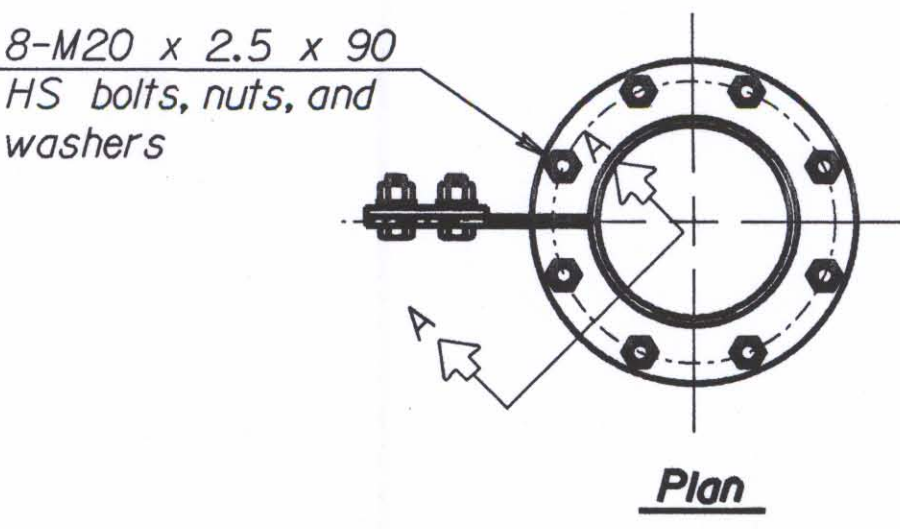


**Section A-A**

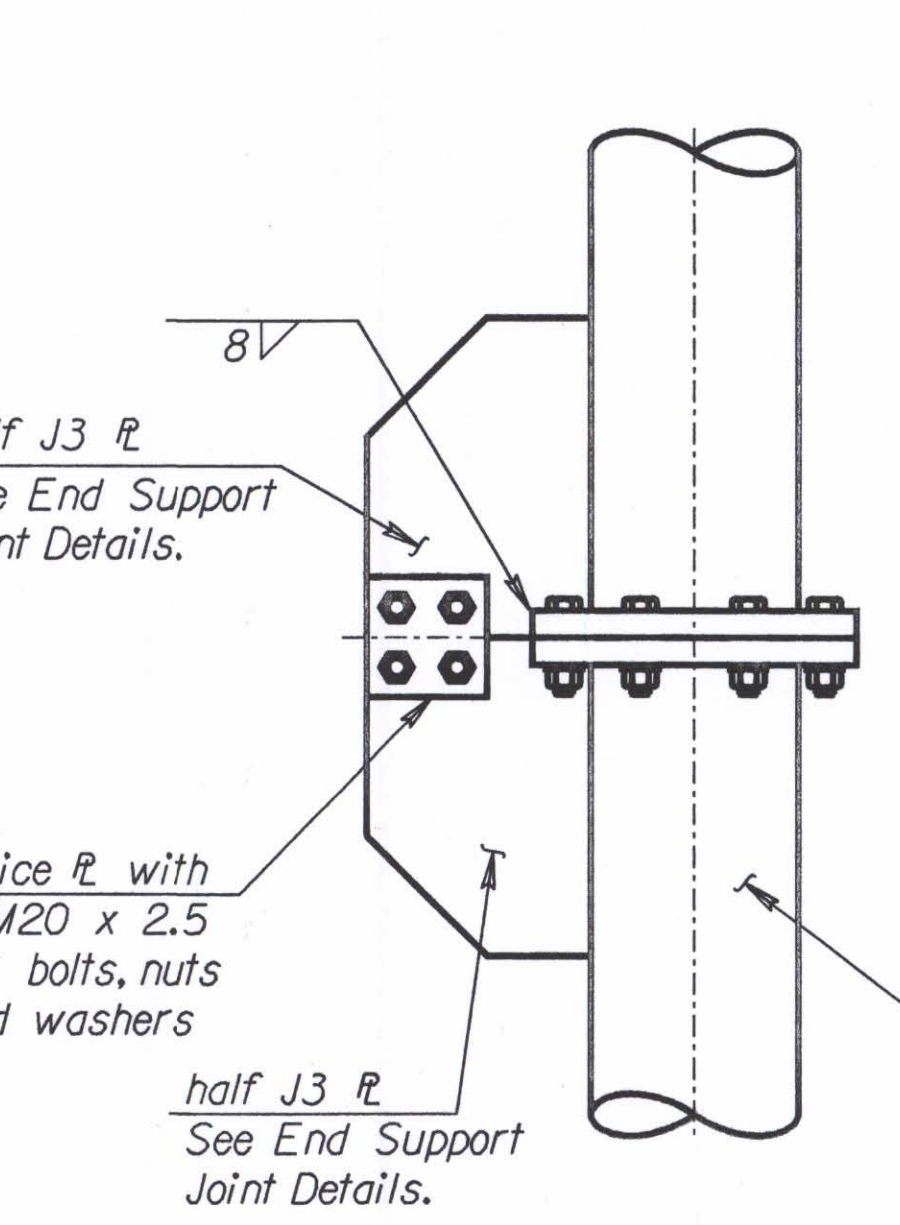
Make Wd1 depth equal to pipe wall thickness, build out to obtain full throat.



**Stiffener Details**

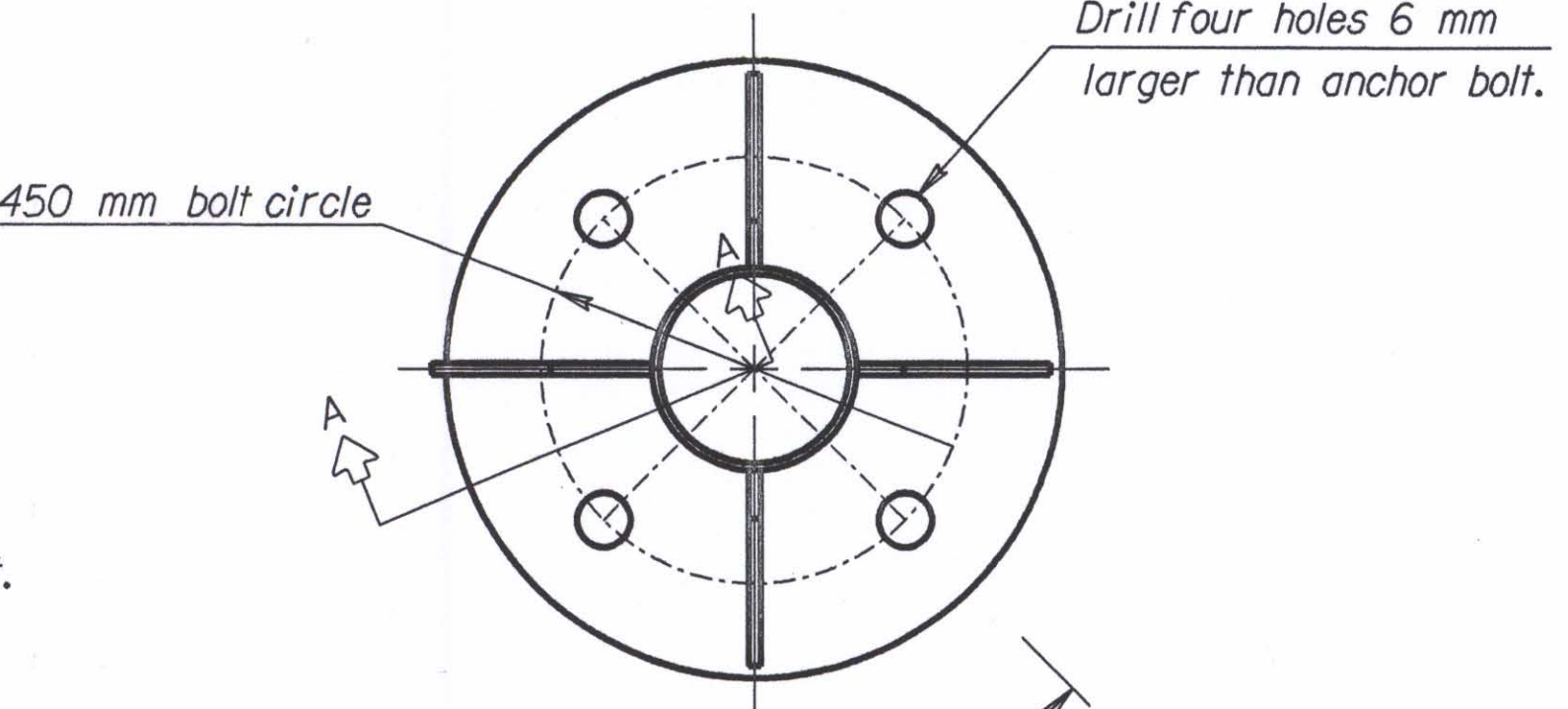


**Plan**

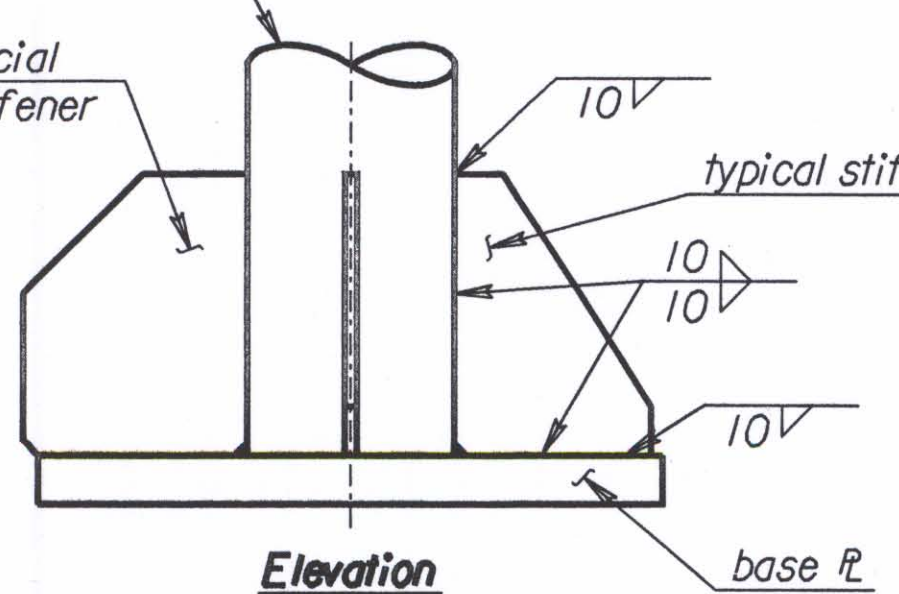


**Elevation**

**END SUPPORT SPLICE DETAIL**

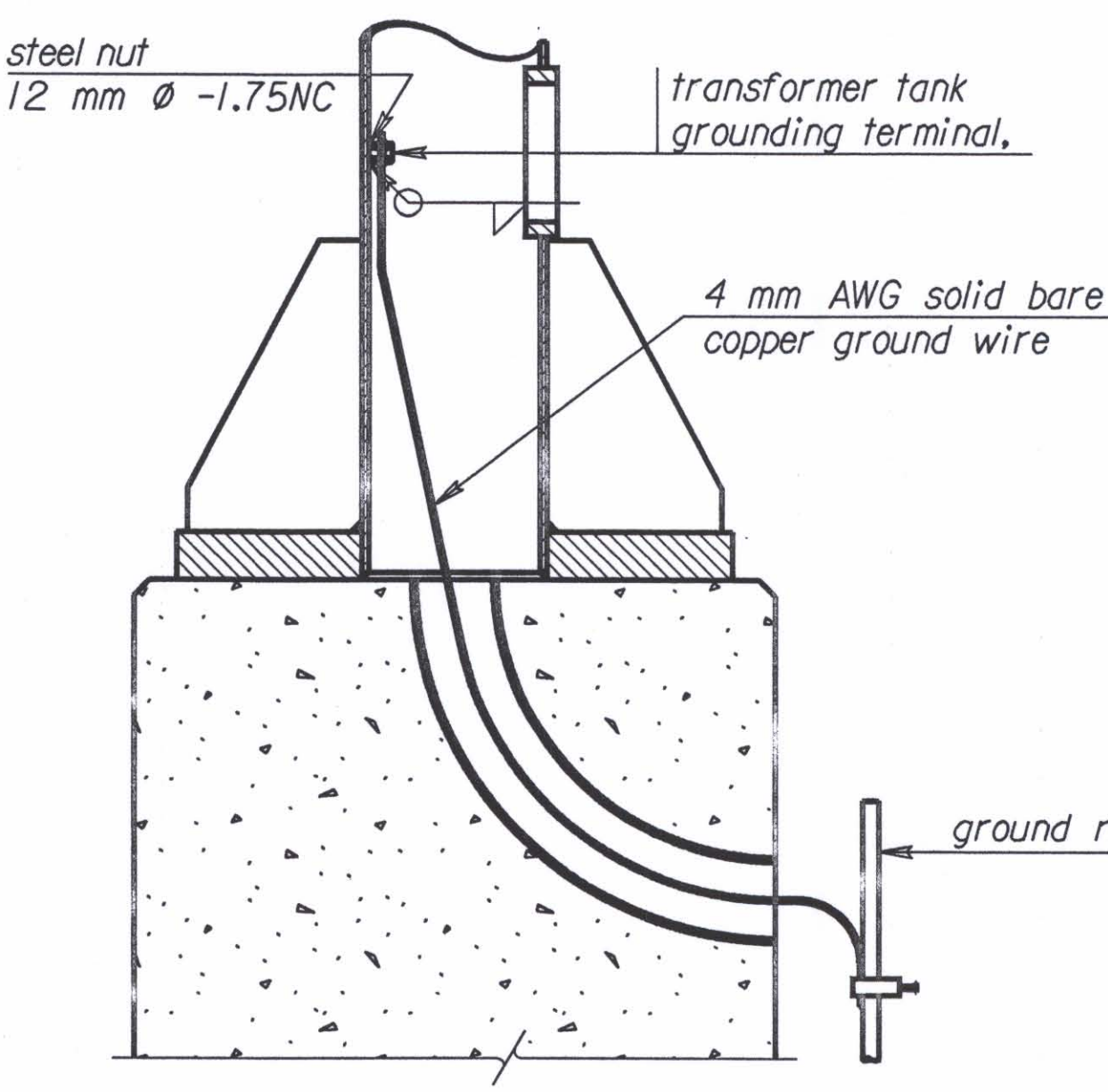


**Plan**

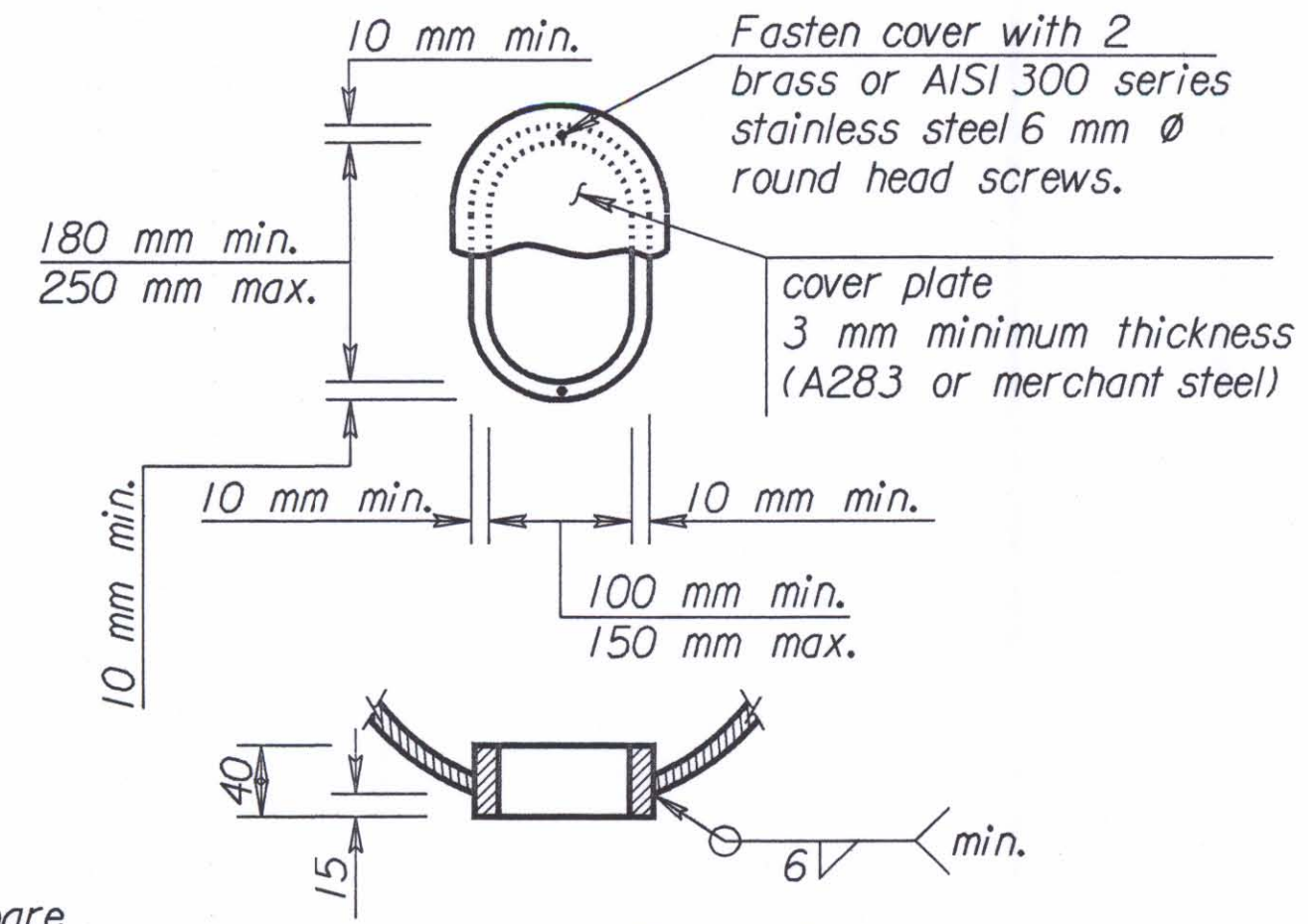


**Elevation**

**END SUPPORT BASE DETAIL**



**GROUNDING DETAILS**



**HANDHOLE DETAIL**

Note: Use a handhole frame bar whose net area is at least 60 percent of the pole section properties at the handhole.

Member (1) is 219 mm O.D. pipe  
Member (2) is 89 mm O.D. pipe

Member (1)* Wall Thickness	Fillet Weld Size Wd2	Anchor Bolt "d"	Base fl "t"
4.78	5	36	45
6.35	6	42	50
7.92	8	48	60
10.3	10	56	70
12.7		64	80
15.1			

\* See "Construction Layout" for wall thickness, "N", "S", and "L".

**STEEL NOT USED**

NO.	DATE	REVISIONS	BY	APP'D
<b>KANSAS DEPARTMENT OF TRANSPORTATION</b> <b>STANDARD STRUCTURAL SIGN SUPPORTS</b> <b>SPAN TYPE OVERHEAD</b> <b>STEEL ALTERNATE</b> <b>END SUPPORT FRAMING PLAN AND SPLICE DETAILS</b> <b>SL151C-01S1</b>				
DESIGNED	RFM	DETAILED	KFH	QUANTITIES
DESIGN CK.	RDH	DETAIL CK.	RDH	QUALCK.
APP'D	4-10-97	APP'D	Kenneth F. Hurst	
CADD		CADD		
CAD		CAD		

Std. Base File: sl151csi.dgn - Plot 1  
 Plotted By: \$USERNAME\$ | Plot Location: \$UNIT\$  
 File: \$\$\$\$\$\$DGN\$SPEC\$  
 Plot Date: \$\$\$\$\$\$SYTIME\$\$\$\$\$\$\$\$